



**FIBRAMÉRICA**  
MINQING TANCOME TECHNOLOGY



**CATALOG**

FTTA Solutions for the 5G



# FIBRAMÉRICA

MINQING TANCOME TECHNOLOGY LTDA

## Complete solutions for the intelligent development of fiber optic networks

Minqing Tancome Technology, under its trade name FIBRAMÉRICA, is one of the world's leading companies dedicated to the design, development, manufacture, distribution and marketing of advanced optical connectivity solutions. We work closely with the main players in the telecommunications market, such as operators, distributors and importers and installers around the world, both as OEMs and under our own brand.


Its headquarters are located in Fuzhou, Fujian, China, with sales offices in Shanghai and Ningbo. It also has direct sales units in America, located in Brazil, where all commercial and technical support is provided in Spanish through its engineers and sector specialists. This expansion not only demonstrates its global vision, but also reflects its commitment to localized customer service, providing commercial and technical assistance in the same time zone and language as our customers.

On its path to excellence, FIBRAMÉRICA has adopted a continuous focus on improving processes, integrating emerging technologies and implementing effective communication strategies. Their dedication translates into competitive prices, efficient production times and comprehensive support, from the manufacturing process to product transportation.

Following the strictest international quality norms and standards, such as ISO9001, it guarantees that each of its products meets the quality and functionality expectations of the most demanding customers.

With a vision of the future, FIBRAMÉRICA focuses its efforts on developing and adapting new products, tailored to the specifics and needs of each project, from the initial design phase to final production.





Next generation for cell sites connections

# FIBRAMÉRICA & 5G

---

Fibramerica follows the advancement of 5G networks and the new challenges for the installations and operations of this network. We understand that the 5G network must have high capacity and operational availability, which is why the products developed for this technology have high durability and resistance to the most diverse installation environments.

We provide customizable optical products for different installation scenarios, always prioritizing the cost-benefit ratio of the project. We help develop new products and technical specifications according to each project, we know that each project can be different depending on the installation location and the equipment manufacturer (BBU and RRH).

All cabling systems are prefabricated, assembled, and fully commissioned at the factory and are maintenance-free. This guarantees great agility in the installation process, as all specifications have already been designed in the design phase. The solutions, as they are plug & play, offer ease and low operational costs when maintenance or upgrades to the system need to be carried out.

The technical requirements for the mobile networks in terms of signal density, quality, and high speed for the provision of 5G services are high. Data transmission quality, bandwidth, and speed in the 5G network will increase up to 4x 25 Gbit for typically 2 small form-factor plugs (SFP) per RRH.

Next generation for cell sites connections

# FIBRAMÉRICA & 5G

## NEW ERA OF PRODUCTS

Welcome to Fibramérica's portfolio of products and services, designed to simplify the deployment of 5G sites. Our solutions are built upon proven FTTH technology, supported by future-proof cable assemblies and passive infrastructure.

Fibramérica is your reliable partner, offering dedicated IP 68 outdoor and indoor connectivity solutions, along with expert consultation and support throughout your project. We provide simplified upgrades, allowing you to effortlessly upgrade your 5G site by seamlessly integrating radio solutions from different manufacturers or by renewing short jumper cables for remote radio heads (RRH).

Fibramérica's approach minimizes downtime, accelerating your deployment. In the world of 5G deployment, time is money. Fibramérica's cutting-edge technologies and "Plug & Play" systems streamline field installations, reducing installation time by approximately 25%. Lower installation costs translate to a more efficient and cost-effective project. Our customized cabling and distribution platforms, available globally, cater to your unique requirements. These solutions save valuable time and resources during installation, enhancing the flexibility and scalability of your project.

Fibramérica's outdoor-ready products come equipped with IP 68 protection, ensuring their reliability in extreme operating conditions. Our products seamlessly integrate with the rest of our solution suite, delivering robustness and durability. At Fibramérica, we go beyond providing products; we're your partners in achieving success. Benefit from localized technical expertise, punctual logistics, and personalized training. We're dedicated to offering the support necessary to realize your 5G deployment goals.

Explore our catalog further to uncover how Fibramérica can empower your 5G site deployment with innovative solutions, cost savings, and steadfast support. Your journey towards a faster, more connected future begins right here.





50





G

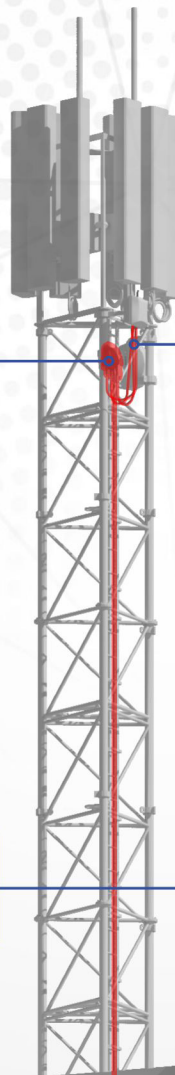




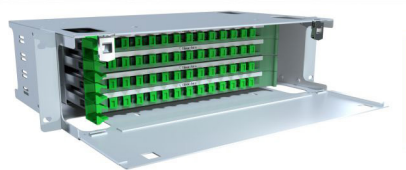
# Discover **FIBRAMERICA** Products for FTTH Solutions



PRECONNECTORIZED  
TERMINATION BOX  
**FAB-HGT-12BYK**



ROUND PRECONNECTORIZED  
CABLE WITH  
BAYONET CONNECTORS



OPTICAL DISTRIBUTION  
FRAME  
**FAB-FPX-P4 Series ODF**

DIELECTRIC OUTDOOR  
CABLE  
**FAB-GYFTY**



PRE-CONNECTORIZED TERMINAL BOX

# FAB-HGT-4DY



### Main features

- The bottom and top cover are fixed with screws, which can be removed.
- Material: PP.
- Protection level up to IP68.
- Damp-proof, waterproof, dust-proof, anti-aging
- 1 PG13.5 watertight seal, 4 pre-connected adapters.
- Installation method: wall-mounted, pole-mounted, aerial-mounted

www.fibramerica.com

Especificações	
Material	PP
L*W*H (mm)	213*101*82
Maximum capacity (core)	12
Maximum input (mm)	/
Max. drop (mm)	- -
Maximum adapter (PCS)	5 (mini SC)
Divisor PLC (PCS)	1*4
IP Code	IP68
Packaging information	G.W.:25KG QTY:40PCS MEAS.:460*460*515MM



PRE-CONNECTORIZED TERMINAL BOX

## FAB-HGT-4X



### Main features

- The bottom and top cover are fixed with screws and can be removed.
- Material: PP. Protection level up to IP68.
- Damp-proof, waterproof, dust-proof, anti-aging.
- 1 PG11 watertight joint, 4 pre-connected adapters.
- Installation method: wall mounting, pole mounting, aerial mounting

Especificações	
Material	PP+GF
L*W*H (mm)	182*138*78
Maximum capacity (core)	12
Maximum input (mm)	11
Max. drop (mm)	/
Maximum adapter (PCS)	4 (mini SC)
Divisor PLC (PCS)	1*4 PLC
IP Code	IP68
Packaging information	G.W.:9KG QTY:20PCS MEAS.:425*310*560mm



PRE-CONNECTORIZED TERMINAL BOX

# FAB-HGT-8ZY-1



### Main features

- The bottom and top cover are fixed with screws and can be removed.
- Material: PP.
- Protection level up to IP68.
- Damp-proof, waterproof, dust-proof, anti-aging.
- 1 PG16 watertight joint, 8 pre-connected adapters.
- Installation method: wall-mounted, pole-mounted, aerial.

www.fibramerica.com

Especificações	
Material	PP
L*W*H (mm)	280*173*74
Maximum splice capacity (core)	12
Maximum input (mm)	Ø14
Max. drop (mm)	- -
Maximum adapter (PCS)	8 (mini sc)
PLC Splitter (PCS)	1*8PLC
IP Code	IP68
Packaging information	G.W.:17KG QTY:20PCS
	MEAS.: 600*390*490mm







PRE-CONNECTORIZED TERMINAL BOX

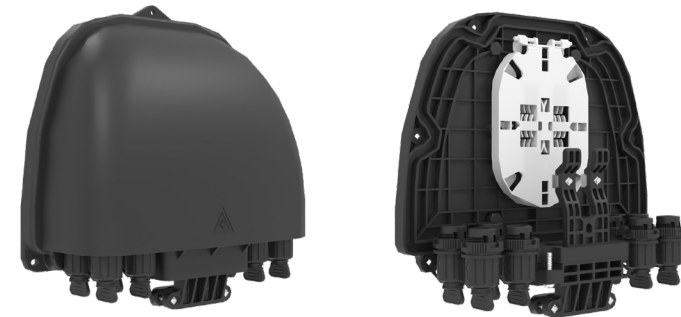
## FAB-HGT-8BYK



### Main features

- The bottom and top cover are fixed with screws and can be removed.
- Material: PP.
- Damp-proof, waterproof, dust-proof, anti-aging.
- Protection level up to IP65.
- The interior is equipped with a PLC 1x8 splitter...
- Installation method: pole mounting, aerial mounting, wall mounting.

Especificações	
Material	PP plastic or PC+ABS
L*W*H (mm)	220*217*79mm
Maximum splice capacity (core)	12
Maximum input (mm)	8
Max. drop (mm)	2 (oval port)
Maximum adapter (PCS)	8 (mini SC)
PLC Splitter (PCS)	1*8PLC
IP Code	IP68
Packaging information	G.W.:16.5KG QTY:20PCS
	MEAS.:440*360*460mm



## PRE-WIRING CONNECTOR AND ADAPTER



### PRE-CONNECTED FLAT CABLE WITH STANDARD SC CONNECTORS

- Connector type: SC, UPC or APC type
- Cable type: flat or round drop cable
- Fiber type: G.657A1, G.657A2 or G.657B3
- Compatibility with adapters from other brands: No
- Function: Connection to the end user.

*\*\* The cable is configured according to the project requirements. In other words, type of sheath, tensile elements, degree of flammability, etc.*



### PRE-CONNECTED ROUND CABLE WITH BAYONET CONNECTORS

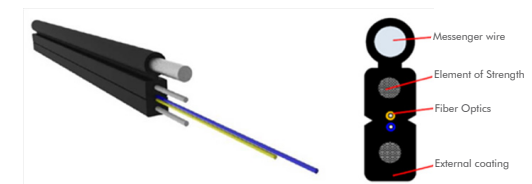
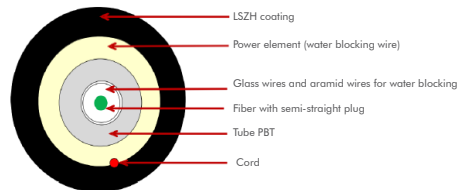
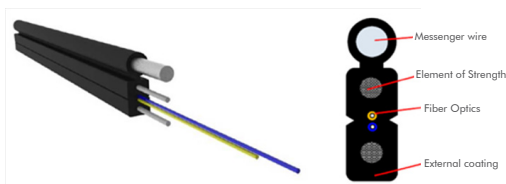
- Connector type: SC/APC
- Cable type: 5 mm round cable
- Fiber type: G.657A1, G.657A2 or G.657B3
- Compatibility with adapters from other brands: Yes
- Function: Interconnection between nap boxes

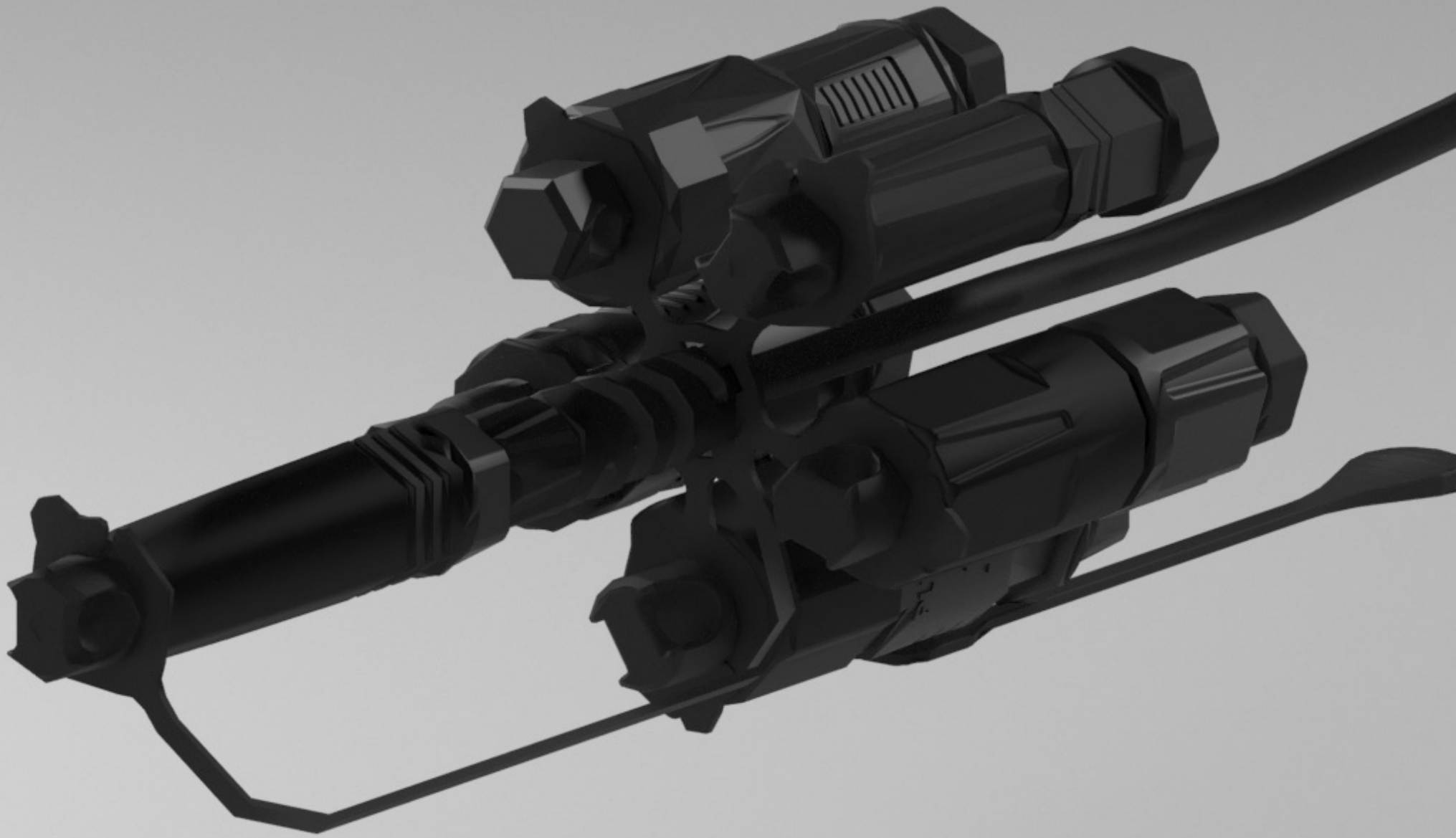
*\*\* The cable is configured according to the project requirements. In other words, type of sheath, tensile elements, degree of flammability, etc.*



### PRE-CONNECTED FLAT CABLE WITH MINI SC CONNECTORS

- Connector type: SC/APC
- Cable type: 2\*5mm flat cable
- Fiber type: G.657A1, G.657A2 or G.657B3
- Compatibility with adapters from other brands: Yes
- Function: End-user connection.





## CABLE REEL HOLDER



FAB-COSU-001



FAB-COSU-002



FAB-COSU-003



FAB-COSU-004



FAB-COSU-001



FAB-COSU-002



FAB-COSU-003



## PASSIVE COMPONENTS

# OPTICAL ADAPTERS

### DESCRIPTION

The fiber adapter is an important component in the construction of an optical network, mainly used to interconnect two fiber connectors.

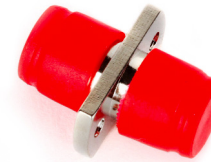
The connectors can be of polished PC, UPC and APC types. The optical adapter comes in versions to connect single fibers (simplex), two fibers together (duplex) or sometimes four fibers together (quad).

Most adapters are female at both ends and allow two cables to be connected. Some adapters, called "hybrids", accept different types of connectors (ST to SC, LC to SC, etc.).

When trying to connect two cables that have different shapes, it is necessary to use a hybrid connector.

### General characteristics

- . Easy to use .
- . Can be recessed into any box, splice tray, etc.
- . Available in both simplex and duplex .
- . Suitable for interconnecting two adapters of the same type .
- . Suitable for all types of polishing.
- . The internal zirconium tube guarantees low insertion loss.



FC/PC Adapter  
simplex with flange



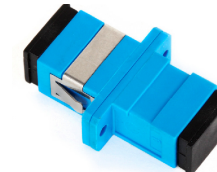
FC/PC Adapter  
simplex without flange



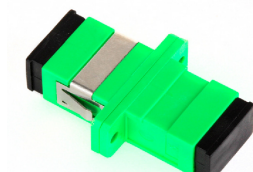
FC/PC Adapter  
simplex with flange



FC/PC Adapter  
simplex without flange



Adapter SC/UPC SM  
simplex with flange



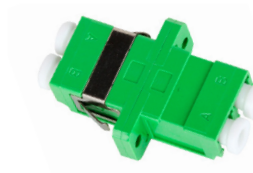
Adapter SC/APC SM  
simplex with flange



LC/UPC SM Adapter  
simplex without flange



LC/UPC SM Adapter  
simplex with flange



LC/APC SM Adapter  
simplex with flange

PASSIVE COMPONENTS



Adapter SC/PC MM  
simplex with flange



Adapter SC/APC SM  
duplex with flange



Adapter SC/PC MM  
duplex with flange



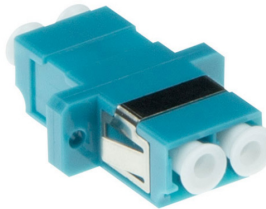
LC/PC MM Adapter  
simplex without flange



FC/PC Adapter  
simplex with flange



LC/PC MM Adapter  
duplex without flange



LC/PC Adapter OM3  
duplex with flange



LC/PC Adapter OM4  
duplex with flange



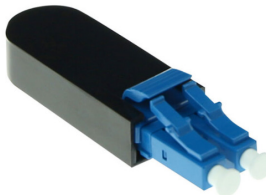
LC/PC Adapter OM5  
duplex with flange



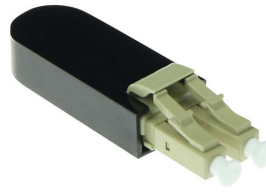
Adapter SC/UPC SM  
duplex with flange



ST Adapter



1310 nm single mode loopback LC loopback adapter



LC Loopback Multimode 850 nm LC loopback adapter

## PASSIVE COMPONENTS

# PATCHCORD & PIGTAILS

### DESCRIPTION

Patchcords (jumpers) are optical assemblies used mainly in data centers for active equipment connections (OLT) to fiber optic distributors (DIO).

They are composed of a fiber optic cable, coated with an inner layer of protection and an outer layer of flame-retardant PVC.

They have an internal Kevlar tape that serves as a traction element and may or may not be terminated with the same type of optical connector at both ends.

They are manufactured with cables of various diameters. They can be of simplex or duplex type, with both single-mode and multimode fibers.

Fibramérica patch cords and pigtails offer low insertion loss, low reflectance and are individually inspected at the plant to ensure compliance with technical parameters.



Configuration: FAB-PATFO-AB-X-FF-ZZ-W-YYY

### General characteristics

- Low insertion loss
- Low reflectance
- Individually inspected
- High quality zirconia ferrules.
- Good repeatability and interchangeability

Connector A	Connector B	X No. of yarns	FF Fiber Type	ZZ Cover	W Cable diameter	YYY Length
SC/UPC = SC SC/APC: AS	SC/UPC = SC SC/APC: AS	Simplex = S	G652D = 2D G657A1 = A1 G657A2 = A2 G657B3 = B3	PVC = PV	1.6mm = 1.6 2mm = 2 3mm = 3	01 = 1 m 010 = 10 m 020 = 20 m
LC/UPC: LC LC/APC: AL	LC/UPC: LC LC/APC: AL					
ST/UPC = ST ST/APC = AT	ST/UPC = ST ST/APC = AT	Duplex = D	OM1: O1 OM2: O2 OM3 = O3 OM4 = O4	LSZH = LS		
FC/UPC = FC FC/APC = AF	FC/UPC = FC FC/APC = AF					

## PASSIVE COMPONENTS

# MECHANICAL CONNECTORS

### DESCRIPTION

In general terms, mechanical connectors are components developed for cable termination without the need for fusion. They allow the correct alignment of the cores and automatic coupling. They have a design that allows quick and easy assembly in minutes.

One of the great advantages of the mechanical connectors is that they do not require epoxy or baking, so you can save time, plus there is no need for a polishing process, being a pre-polished connector.

Fibramérica has a wide catalog of quick connectors, with different configurations of polishing (UPC & APC), connector, fiber type (single or multimode) and type of application (round cable and/or flat drop).

Both UPC and APC polished, in SC and LC. Each model is characterized by different fast assembly methods and type of cable to which it can be applied.

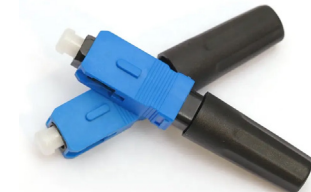
Likewise, they are adaptable, as we can find them in different configurations, both for their type of polishing, connector, type of fiber (single-mode or multimode) and even the type of cable (round or square).

Fibramérica connectors use high quality equalizing gel and first class ferrules to guarantee excellent parameters in all its mechanical connector product line.



**Mechanical connector SC  
Mod. FAB-SC-01**

- Application: Drop 3x2mm; 2x1.6mm
- RL:  $\geq 50$ dB for UPC  
 $\geq 55$  dB for APC



**Mechanical connector SC  
Mod. FAB-SC-02**

- Application: Drop 3x2mm
- RL:  $\geq 50$ dB for UPC  
 $\geq 55$  dB for APC



**Mechanical connector SC  
Mod. FAB-SC-03**

- Application: Drop 3x2mm
- RL:  $\geq 50$ dB for UPC  
 $\geq 55$  dB for APC



**Mechanical connector SC  
Mod. FAB-SC-04**

- Application: 2x3mm
- RL:  $\geq 45$ dB for UPC  
 $\geq 50$ dB for APC

## PASSIVE COMPONENTS

# MECHANICAL CONNECTORS



SC mechanical connector  
Mod. FAB-ESC250D

- Application: 3x2 and 1.6x2mm
- RL: UPC  $\geq$  50dB  
APC  $\geq$  55dB



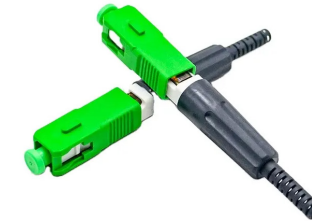
Mechanical connector SC  
Mod. FAB-FAST

- Application: Drop 3x2mm
- RL:  $\geq$  50dB for UPC  
 $\geq$  55 dB for APC



LC mechanical connector  
Mod. FAB-FMC-LC30X20

- Application: Drop 3x2mm
- RL:  $\geq$  50dB for UPC  
 $\geq$  60 dB for APC



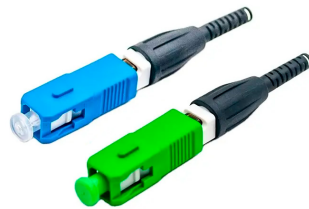
LC mechanical connector  
Mod. FAB-FTD925T

- Application: 2mm, 3mm, 0.9mm & 2.0\*3.0mm & 2.0\*1.6mm Flat Drop
- RL:  $\geq$  50dB for UPC  
 $\geq$  55 dB for APC



Mechanical connector SC  
Mod. FAB-FTD925U-L

- Application: 2mm, 3mm and 0.9mm, and Drop 3x2mm and 2x1.6mm.
- RL: UPC  $\geq$  45dB  
APC  $\geq$  50dB



Mechanical connector SC  
Mod. FAB-FTD920I

- Application: 2mm, 3mm and 0.9 mm
- RL: UPC  $\geq$  45dB, APC  $\geq$  50dB  
MM: UPC  $\geq$  25dB



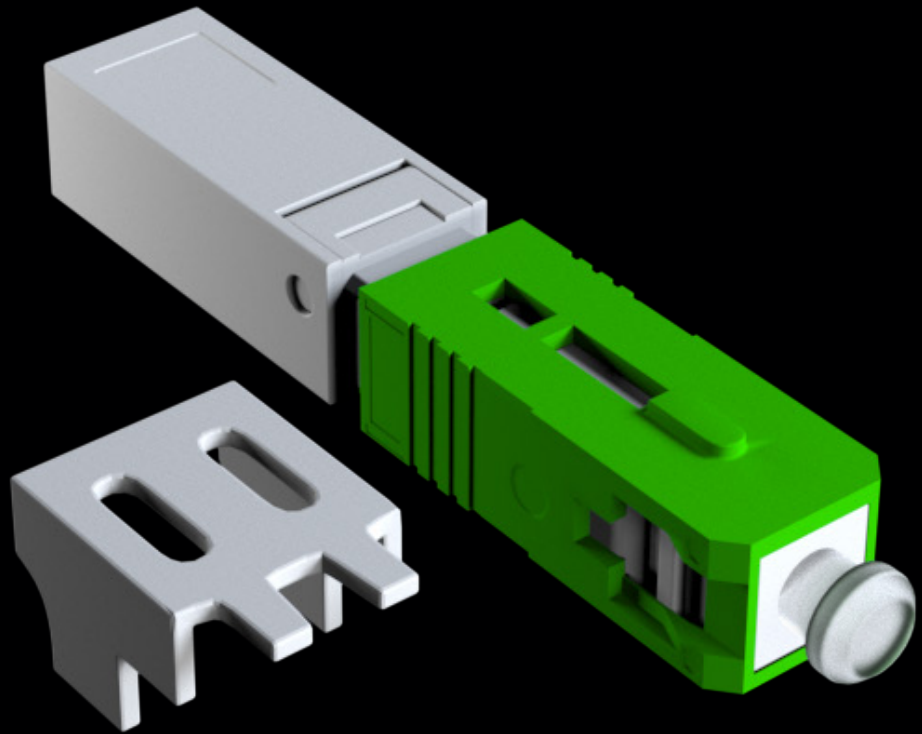
LC mechanical connector  
Model FAB-FTD920I

- Application: 2mm, 3mm and 0.9mm, and Drop 3x2mm and 2x1.6mm.
- RL: APC  $\geq$  50dB



Mechanical connector SC  
mod. FAB-FC-SC-B

- Application: 2mm, 3mm, 0.9mm & drop 3x2mm
- RL:  $\geq$  50dB for UPC  
 $\geq$  55dB for APC



## FIBER OPTICAL CABLE

# SELF-SUPPORTING CABLE ASU

### DESCRIPTION

FAB-ASU cable is a fully dielectric, self-supporting, single loose tube cable with water blocking gel, widely used in outside plant for optical distribution. In short runs (80 to 120 meters), ASU cable is an economical alternative to ADSS cable.

It has a medium density polyethylene jacket, reduced diameter and capacity to support up to 24 fibers in its single loose tube. It consists of two parallel FRP elements that act as supporting elements supporting spans of up to 200 meters.

The outer jacket is made of PE which, depending on the requirement, can change the outer diameter. In addition, its design minimizes wind and ice loads, is quick to install and easy to transport.

### FEATURES

- Single-mode optical fiber type G.652D
- Outer sheath: MDPE (Medium Density Polyethylene)
- Operating Temperature:  $-20^{\circ}\text{C} \sim +65^{\circ}\text{C}$
- Maximum Span (Distance between Poles): 200 meters
- Protection against UV rays and humidity
- Variable diameter according to the number of fibers and project criteria.

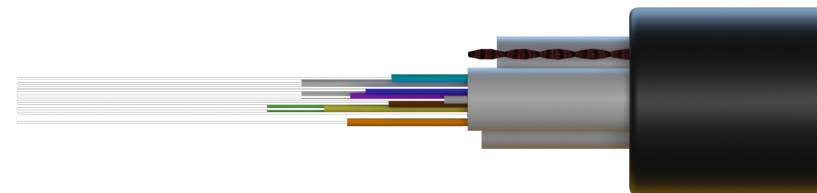
### STANDARDS

The cable complies with the IEEE 1222-2004 standard as well as IEC 6079-1.



### CABLE STRUCTURE

1. PE Outer Jacket
2. FRP traction elements
3. Tear wire
4. Fiber optic yarns



**FIBER OPTICAL CABLE**

# SELF-SUPPORTING CABLE ASU

**SPECIFICATIONS**

SPAM 80 metros	unit						
Amount of fiber	N°	6		12		24	
Cable model		FAB-ASU-6-80	FAB-ASU-6-80A	FAB-ASU-12-80	FAB-ASU-12-80A	FAB-ASU-24-80	FAB-ASU-24-80A
FRP reinforcement diameter	±0.1mm	1.5mm	2mm	1.5mm	2mm	1.5mm	2.5mm
Number of FRP reinforcements	N°	2		2		2	
Loose tube diameter PBT	±0.1mm	1.8mm		2mm		2.4mm	
Number of loose tubes	N°	1		1		1	
Water blocking threads	D	2000		2000		2000	
Tear threads	N°	1		1		1	

SPAM 120 metros	unit						
Amount of fiber	N°	6		12		24	
Cable model		FAB-ASU-6-120	FAB-ASU-6-120A	FAB-ASU-12-120	FAB-ASU-12-120A	FAB-ASU-24-120	FAB-ASU-24-120A
FRP reinforcement diameter	±0.1mm	2.0mm	2.0mm	2.0mm	2.0mm	2.0mm	2.6mm
Number of FRP reinforcements	N°	2		2		2	
Loose tube diameter PBT	±0.1mm	1.8mm		2mm		2.4mm	
Number of loose tubes	N°	1		1		1	
Water blocking threads	D	2000		2000		2000	
Tear threads	N°	1		1		1	

*Important: All cables can be adjusted according to the need of each project. Please consult with one of our specialists for the best cable option.*

## FIBER OPTICAL CABLE

# DIELECTRIC OUTDOOR CABLE

### DESCRIPTION

FAT-GYFTY cable is ideally designed for outdoor installations, whether for laying in pipelines and overhead power systems, multiple lightning strikes and severe electromagnetic interference conditions, and can also be used as an optical access cable.

It has a fully dielectric structure, consisting of a PE jacket and loose tubes containing fiber inside. In the middle of the cable, an FRP tensile element articulates the cable configuration.

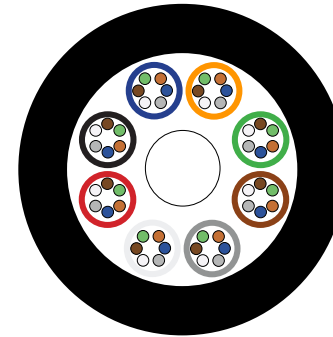
This type of cable offers excellent tensile strength and flexibility in a compact size. It offers excellent optical transmission and physical performance.

### FEATURES

- Low dispersion and attenuation
- Light weight and small diameter, easy to place
- Excellent mechanical and temperature performance
- FRP ensuring resistance to electromagnetic interference
- High-strength, hydrolysis resistant loose tube
- Special tube filling compound ensures critical fiber protection
- 100% cable core filling

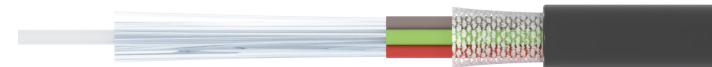
### STANDARDS

The cable complies with YD/T 901-2009 standard as well as IEC.



### CABLE STRUCTURE

1. PE Outer Jacket
2. Fiber
3. Loose tubes
4. FRP tensile element
5. Pipe compound



**FIBER OPTICAL CABLE**
**DIELECTRIC OUTDOOR CABLE**

Code	Number of fibers	Tubes	Fillers	Cable diameter (mm)	Cable weight kg/Km	Traction force (Long/Short term) N	Crush resistance (Long/Short term) N/1000mm	Bending radius Dynamic / Static (mm)
FAB-GYFTY-2-6	2-6	1	5	8.3	59	600/1500	300/1000	20D/10D
FAB-GYFTY-8-12	8-12	2	4	8.3	59	600/1500	300/1000	20D/10D
FAB-GYFTY-14-18	14-18	3	3	8.3	59	600/1500	300/1000	20D/10D
FAB-GYFTY-20-24	20-24	4	2	8.3	59	600/1500	300/1000	20D/10D
FAB-GYFTY-26-30	26-30	5	1	8.3	59	600/1500	300/1000	20D/10D
FAB-GYFTY-32-36	32-36	6	0	8.3	59	600/1500	300/1000	20D/10D
FAB-GYFTY-38-48	38-48	4	1	9.0	67	600/1500	300/1000	20D/10D
FAB-GYFTY-50-60	50-60	5	0	9.0	67	600/1500	300/1000	20D/10D
FAB-GYFTY-62-72	62-72	6	0	9.0	67	600/1500	300/1000	20D/10D
FAB-GYFTY-74-84	74-84	7	1	10.2	82	600/1500	300/1000	20D/10D
FAB-GYFTY-86-96	86-96	8	0	10.2	82	600/1500	300/1000	20D/10D
FAB-GYFTY-98-108	98-108	9	1	11.4	101	600/1500	300/1000	20D/10D
FAB-GYFTY-110-120	110-120	10	0	11.4	101	600/1500	300/1000	20D/10D
FAB-GYFTY-122-132	122-132	11	1	12.8	125	600/1500	300/1000	20D/10D
FAB-GYFTY-134-144	134-144	12	0	12.8	125	600/1500	300/1000	20D/10D

Transport / Storage / Operating temperature - 40 °C~ + 70 °C,

*Important: All cables can be adjusted according to the need of each project. Please consult with one of our specialists for the best cable option.*

## FIBER OPTICAL CABLE

# OUTDOOR SHIELDED CABLE

### DESCRIPTION

FAB-GYTS aerial cable with metallic armor is designed for different outdoor applications, both in ducts and aerial for non-self-supporting applications. Its main characteristic is that it has a steel tape that protects the cable against humidity, provides rigid protection, rodent resistance, covered by a black polyethylene jacket.

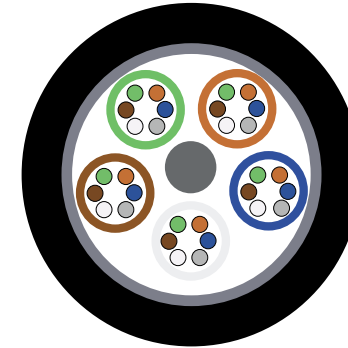
In FAB-GYTS cable, the fibers are placed in loose tubes that are filled with a water-blocking filling compound. The tubes and fillers are braided around the reinforcing member in a circular cable core.

### FEATURES

- Excellent crush resistance and flexibility
- Up to 288 fiber capacity
- Gel-filled slack tubes for superior water-resistant performance
- Corrugated steel moisture-proof tape protects cable from mechanical and rodent damage.

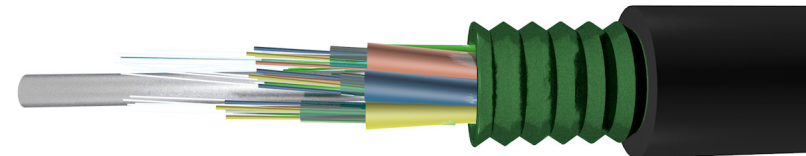
### STANDARDS

The cable complies with the IEEE 1222-2004 standard as well as IEC 6079-1.



### CABLE STRUCTURE

1. PE Outer Jacket
2. Metallic armor
3. FRP core element
4. Loose tubes
5. Fiber optic strands



**FIBER OPTICAL CABLE**

# OUTDOOR SHIELDED CABLE

Code	Number of fibers	Tubes	Fillers	Cable diameter (mm)	Cable weight kg/Km	Traction force (Long/Short term) N	Crush resistance (Long/Short term) N/1000mm	Bending radius Dynamic / Static (mm)
FAB-GYTS-2-6	2-6	1	4	8.9	78/88	600/1500	300/1000	10D/20D
FAB-GYTS-8-12	8-12	2	3	8.9	78/88	600/1500	300/1000	10D/20D
FAB-GYTS-14-18	14-18	3	2	8.9	78/88	600/1500	300/1000	10D/20D
FAB-GYTS-20-24	20-24	4	1	8.9	78/88	600/1500	300/1000	10D/20D
FAB-GYTS-26-30	26-30	5	0	8.9	78/88	600/1500	300/1000	10D/20D
FAB-GYTS-32-36	32-36	6	0	9.2	82/87	600/1500	300/1000	10D/20D
FAB-GYTS-38-48	38-48	4	1	9.5	82/87	600/1500	300/1000	10D/20D
FAB-GYTS-50-60	50-60	5	0	9.5	82/87	600/1500	300/1000	10D/20D
FAB-GYTS-62-72	62-72	6	0	10.0	98/114	600/1500	300/1000	10D/20D
FAB-GYTS-74-84	74-84	7	1	11.2	110/129	600/1500	300/1000	10D/20D
FAB-GYTS-86-96	86-96	8	0	11.2	112/129	600/1500	300/1000	10D/20D
FAB-GYTS-98-108	98-108	9	1	12.5	137/161	600/1500	300/1000	10D/20D
FAB-GYTS-110-120	110-120	10	0	12.5	137/161	600/1500	300/1000	10D/20D
FAB-GYTS-122-132	122-132	11	1	13.8	163/189	600/1500	300/1000	10D/20D
FAB-GYTS-134-144	134-144	12	0	13.8	163/189	600/1500	300/1000	10D/20D

Transport / Storage / Operating temperature - 40 °C~ + 70 °C,

*Important: All cables can be adjusted according to the need of each project. Please consult with one of our specialists for the best cable option.*



FIBRAMÉRICA | Míngqíng Táncomé Technology Co., Ltd  
No 42, Baijin East Road, Baijin Industrial Park,  
Baizhong Town, Míngqíng County, Fuzhou, Fujian, China  
Phone: +86 18621754882

Office in America:  
Rua Arthur Max Dôose, 153, Sala 1302  
Balneário Camboriú - Brasil  
Fone: (+55) 47 2033 2231  
Contato: [comercial@fibramerica.com](mailto:comercial@fibramerica.com)