



FIBRAMÉRICA
MINQING TANCOME TECHNOLOGY LTDA



CATALOG

Fiber Optic Termination Boxes



FIBRAMÉRICA

MINQING TANCOME TECHNOLOGY LTDA

Complete solutions for the intelligent development of fiber optic networks

Minqing Tancome Technology, under its trade name FIBRAMÉRICA, is one of the leading global companies dedicated to the design, development, manufacture, distribution and marketing of advanced optical connectivity solutions. We work allied to major players in the telecommunications market such as operators, distributors and importers installers worldwide, either as OEM or under our brand.

It has its headquarters located in Fuzhou, Fujian, China, with commercial offices in Shanghai and Ningbo. It also has direct commercial units in America, located in Brazil, where all commercial and technical support is provided in Spanish through its engineers and specialists in the sector. This expansion not only demonstrates its global vision, but also reflects its commitment to localized customer service, providing commercial and technical assistance in the same time zone and language as our customers.

On its path to excellence, FIBRAMÉRICA has adopted a continuous focus on process improvement, the integration of emerging technologies and the implementation of effective communication strategies. Its dedication translates into competitive pricing, efficient production times and comprehensive support, from the manufacturing process to the transportation of products.

By adhering to the most rigorous international quality norms and standards, such as ISO9001, it ensures that each of its products meets the quality and functionality expectations of the most demanding customers.

With a forward-looking vision, FIBRAMÉRICA concentrates its efforts in the development and adaptation of new products, adjusted to the specificities and needs of each project, covering from the initial conception phase to the final production.



FIBER OPTIC TERMINATION BOXES

With a track record backed by engineering excellence and an unwavering commitment to innovation, Fibramérica presents its line of Optical Termination Boxes and Optical Rosettes.

Developed with the most advanced technology, our optical products reflect a holistic approach that combines performance, versatility and cost-effectiveness, which define a high level of commitment to our customers' competitiveness.

Recognizing that each project is unique, we have diversified our offerings to meet a wide range of needs. With port capacities ranging from 2 to 64 ports, and IP protection levels ranging from basic to advanced, our products are designed to perform in a variety of environments and applications.

Fibramérica offers a range of colors, variety of plastics and proprietary designs that not only enhance aesthetics but also functionality and urban and rural system integration anywhere in the world.

Our R&D team works tirelessly to stay at the forefront of emerging technology. As a result, we are able to offer solutions that are not only relevant to today's market demands, but are also prepared for the needs of the future. This investment in research and development is reflected in the high quality and durability of our products, which are meticulously tested under rigorous conditions to ensure optimum performance.



FIBER OPTIC TERMINATION BOXES

When it comes to pricing, we are aware of the challenges our customers face in remaining competitive in a global marketplace. That's why we have optimized our manufacturing processes to offer high-quality products at competitive prices. But we don't stop at price; we also offer a wide range of financing options and volume agreements to maximize your return on investment.

We know that an exceptional product requires exceptional support. Fibramérica has a world-class customer service team trained to provide fast and effective solutions. From first contact to project implementation and beyond, our customers are assured that they are backed by a company that cares as much about their success as they do.

Learn more about our Optical Termination Boxes and Optical Rosettes, comprehensive solutions designed to take your telecommunications infrastructure to the next level. With Fibramérica, you are investing in a long-term business relationship based on quality, innovation and exceptional service. That's why we are the partner of choice for companies looking to not only meet today's market demands, but exceed them. In a world where technology advances at a dizzying pace, Fibramérica is the choice for those who won't settle for anything less than excellence.







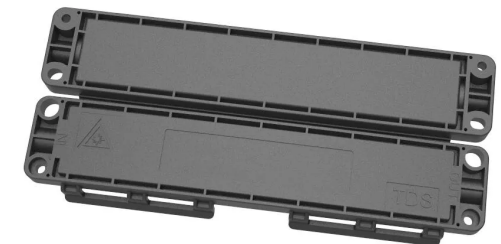
FTTH TERMINATION BOX

FAB-HGT-1B



Main features

- It is used for different kinds of modules and applied to the working area subsystem.
- It uses embedded surface frame, easy to install and disassemble
- It is with protective door and dusty free.
- Can do OEM for any customers and print requested logo.



Specifications

Specifications	
L*W*H (mm)	241*73*30
Material	ABS+PC
Cable entry size (mm)	5mm
Cable outlet size (mm)	5mm
IP code	IP68
Capacity	1 adapter SC

FTTH TERMINATION BOX

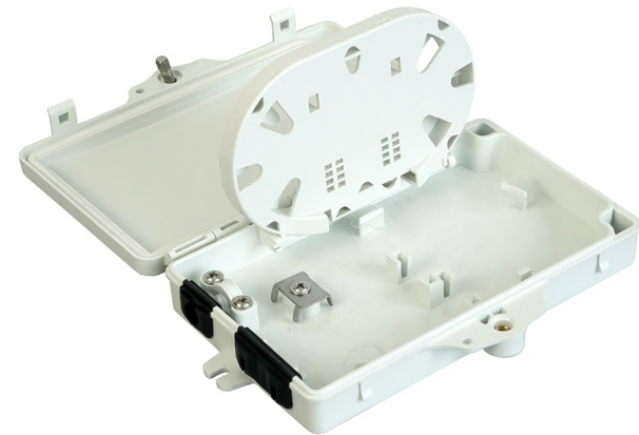
FAB-HGT-2A



Main features

- Water-proof design with IP65 Protection level
- Integrated with splice cassette and cable management system.
- Manage fibers in a reasonable fiber radius condition.
- Easy to maintain and extend the capacity.
- Fiber bend radius control more than 40mm
- Suitable for the fusion splice or mechanical splice
- 1*2 splitter can be installed as an option

Specifications	
L*W*H (mm)	175*122*31
Material	PC+ABS/ABS
Max Splicing Capacity (core)	8
Max Input (mm)	Ø9
Max Output (mm)	2*3~3*6
Max Adapter (Pcs)	2
PLC Splitter (Pcs)	PLC 1*2/1*4
IP Code	IP65
Packing Information	G.W: 13Kg QTY: 50pcs 665*380*205mm



FTTH TERMINATION BOX

FAB-HGT-2B

Main features

- Total enclosed structure, be in nice shape.
- Material is PC+ABS, wet-proof, water-proof, dust-proof, anti-ging, protection level up to IP65.
- Clamping for feeder cable and drop cable, fiber splicing, fixation, storage, distribution...etc all in one.
- Cable, pigtails, patch cords are running through own path without disturbing each other.
- Distribution panel can be flipped up, feeder cable can be placed in a cup-joint way.
- Installation method: wall-mounted

www.fibramerica.com

Specifications	
Material	PC+ABS/ABS
L*W*H (mm)	152*133*37
Max Splicing Capacity (core)	2
Max Input (mm)	Ø9
Max Output (mm)	2*3
Max Adapter (Pcs)	2
PLC Splitter (Pcs)	/
IP code	IP65
Packing Information	G.W.:10.7Kg QTY:40Pcs MEAS.:535*330*300mm



FTTH TERMINATION BOX

FAB-HGT-2F



Main features

- It is used for different kinds of modules and applied to the working area subsystem.
- It uses embedded surface frame, easy to install and disassemble, it is with protective door and dusty free, can do OEM for any customers and print requested LOGO.

Specifications	
Material	PC+ABS
L*W*H (mm)	180*58*21
Max Splicing Capacity (core)	2
Cable entry / out size (mm)	2*3mm drop cable Ø4.5 mm round cable
Net weight of single product	0.07KG
Environmental protection	Against UV ultraviolet rays
PLC Splitter (Pcs)	1(1*4)
IP code	IP66
Protection against fungi	ISO 846 – A



FTTH TERMINATION BOX

FAB-HGT-4A



Main features

- Advanced structure design easy operation and reasonable routing.
- Material: PC+ABS/ABS.
- Moisture proof, waterproof, dust-proof, anti-aging.
- Protection level up to IP65.
- Installation method: pole-mounted, wall-mounted.

www.fibramerica.com

Specifications	
Material	PC+ABS/ABS
L*W*H (mm)	206*135*40
Max Splicing Capacity (core)	8
Max Input (mm)	Ø9
Max Output (mm)	2*3~3*6
Max Adapter (Pcs)	4
PLC Splitter (Pcs)	1(1*4)
IP code	IP65
Packing Information	G.W.:14Kg QTY:40Pcs MEAS.: 590*445*270mm

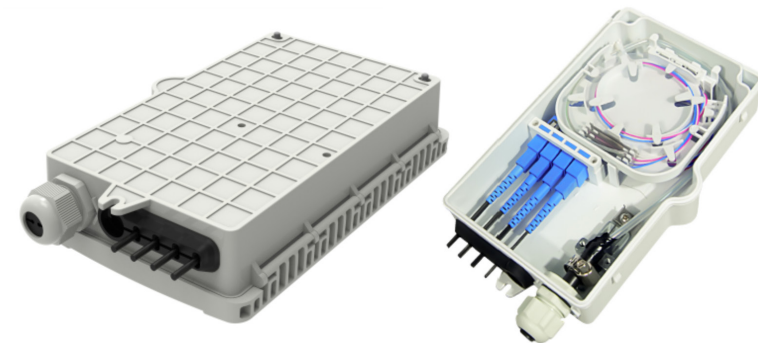


FTTH TERMINATION BOX
FAB-HGT-4B

Main features

- Total enclosed structure.
- Material: PC+ABS.
- Wet-proof, water-proof, dust-proof, anti-aging.
- Protection level up to IP65.
- Cable, pigtails, patch cords are running through own path without disturbing each other.
- Distribution panel can be flipped up, feeder cable can be placed by express port.
- Wall-mounted or poled-mounted.

Specifications	
Material	PC+ABS/ABS
L*W*H (mm)	206*129*44
Max Splicing Capacity (core)	8
Max Input (mm)	12
Max Output (mm)	2*3~4*7
Max Adapter (Pcs)	4
PLC Splitter (Pcs)	1(1*4)
IP code	IP65
Packing Information	G.W.:15.3Kg QTY:40Pcs MEAS.: 590*445*270mm



FTTH TERMINATION BOX

FAB-HGT-4D

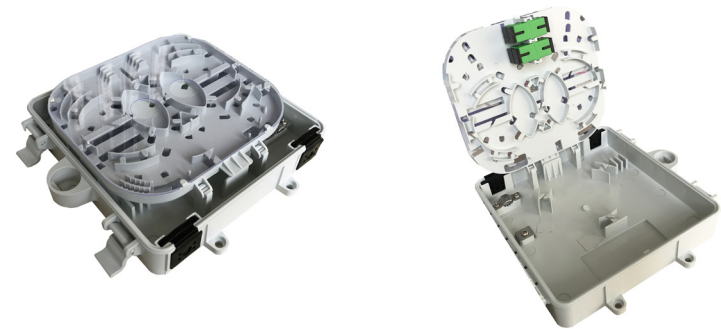


Main features

- Water-proof design with IP65 Protection level
- Manage fibers in a reasonable fiber radius condition
- Easy to maintain and extend the capacity
- Fiber bend radius control more than 40mm
- 1*2 or 1*4 splitter can be installed as an option
- 8 ports cable entrance for FTTH drop cable

www.fibramerica.com

Specifications	
Material	PC+ABS/ABS
L*W*H (mm)	182*174*45
Max Splicing Capacity (core)	4
Max Input (mm)	2*8mm
Max Output (mm)	8*(2x3mm)
Max Adapter (Pcs)	4
PLC Splitter (Pcs)	1(1*4 or 1*2)
IP code	IP65
Empty Weight	0.6kg



FTTH TERMINATION BOX

FAB-HGT-4K



Main features

- Total enclosed structure, be in nice shape.
- Material is PC+ABS
- Wet-proof, water-proof, dust-proof, anti-aging.
- Protection level up to IP54.
- Cable, pigtails, patch cords are running through own path without disturbing each other.
- Distribution panel can be flipped up, feeder cable can be placed by express port.
- Wall-mounted or poled-mounted.

Specifications	
Material	PC+ABS/ABS
L*W*H (mm)	193*149*40
Max Splicing Capacity (core)	6
Max Input (mm)	Ø9
Max Output (mm)	/
Max Adapter (Pcs)	6
PLC Splitter (Pcs)	/
IP code	IP54
Packing Information	G.W.:11.9Kg QTY:40Pcs MEAS.:425*330*570mm



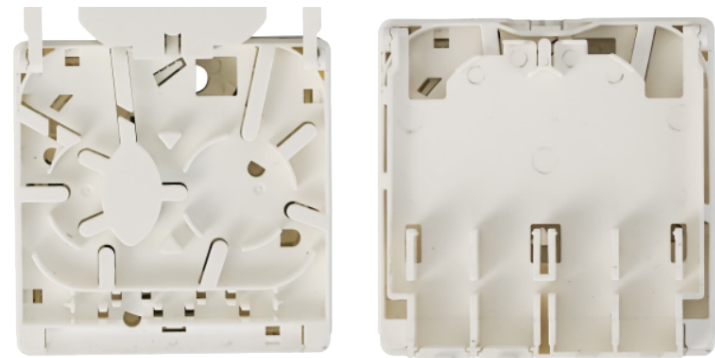
FTTH TERMINATION BOX
FAB-HGT-4K-1

Main features

- Total enclosed structure, be in nice shape.
- Material is PC+ABS
- Wet-proof, water-proof, dust-proof, anti-aging.
- Protection level up to IP54.
- Cable, pigtails, patch cords are running through own path without disturbing each other.
- Distribution panel can be flipped up, feeder cable can be placed by express port.
- Wall-mounted or poled-mounted.

www.fibramerica.com

Specifications	
Material	PC+ABS/ABS
L*W*H (mm)	193*149*40
Max Splicing Capacity (core)	6
Max Input (mm)	Ø9
Max Output (mm)	/
Max Adapter (Pcs)	6
PLC Splitter (Pcs)	/
IP code	IP54
Packing Information	G.W.:11.9Kg QTY:40Pcs MEAS.:425*330*570mm



FTTH TERMINATION BOX

FAB-HGT-4K-2

Main features

- Total enclosed structure, be in nice shape.
- Material is PC+ABS
- Wet-proof, water-proof, dust-proof, anti-aging.
- Protection level up to IP54.
- Cable, pigtails, patch cords are running through own path without disturbing each other.
- Distribution panel can be flipped up, feeder cable can be placed by express port.
- Wall-mounted or poled-mounted.

Specifications	
Material	PC+ABS/ABS
L*W*H (mm)	193*149*40
Max Splicing Capacity (core)	6
Max Input (mm)	Ø9
Max Output (mm)	/
Max Adapter (Pcs)	6
PLC Splitter (Pcs)	/
IP code	IP54
Packing Information	G.W.:11.9Kg QTY:40Pcs MEAS.:425*330*570mm



FTTH TERMINATION BOX

FAB-HGT-6A



Main features

- Total enclosure structure, be in nice shape.
- Material: PC+ABS.
- Wet-proof, water-proof, dust-proof, anti-aging.
- Protection level up to IP54.
- Cable, pigtails, tach cords are running through own path without disturbing each other.
- Wall-mounted.

www.fibramerica.com

Specifications	
Material	PC+ABS/ABS
L*W*H (mm)	193*149*40
Max Splicing Capacity (core)	6
Max Input (mm)	Ø9
Max Output (mm)	/
Max Adapter (Pcs)	6
PLC Splitter (Pcs)	/
IP code	IP54
Packing Information	G.W.:11.9Kg QTY:40Pcs MEAS.:425*330*570mm

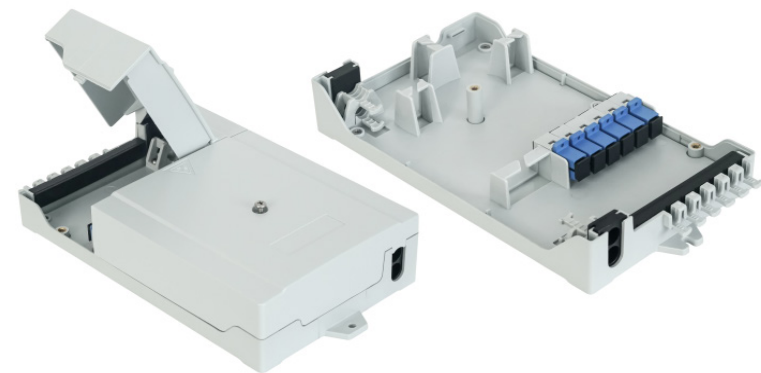


FTTH TERMINATION BOX
FAB-HGT-6ZT

Main features

- Total enclosed structure, be in nice shape.
- Material is PC+ABS.
- Wet-proof, water-proof, dust-proof, anti-aging.
- Protection level up to IP54.
- Cable, pigtails, patch cords are running through own path without disturbing each other.
- Distribution panel can be flipped up, feeder cable can be placed by express port.
- Wall-mounted or poled-mounted.

Specifications	
Material	PC+ABS/ABS
L*W*H (mm)	235*126*51
Max Splicing Capacity (core)	6
Max Input (mm)	Ø9
Max Output (mm)	/
Max Adapter (Pcs)	6
PLC Splitter (Pcs)	/
IP code	IP54
Packing Information	G.W.:11.9Kg QTY:40Pcs MEAS.:425*330*570mm



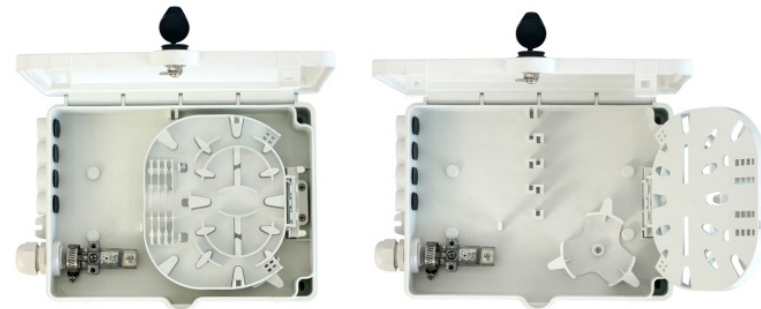
FTTH TERMINATION BOX
FAB-HGT-8A

Main features

- Total enclosed structure, be in nice shape.
- Material is PC+ABS
- Wet-proof, water-proof, dust-proof, anti-aging.
- Protection level up to IP65.
- Cable, pigtails, patch cords are running through own path without disturbing each other.
- Distribution panel can be flipped up, feeder cable can be placed by express port.
- Wall-mounted or poled-mounted.

www.fibramerica.com

Specifications	
Material	PC+ABS/ABS
L*W*H (mm)	228*172*47
Max Splicing Capacity (core)	8
Max Input (mm)	12
Max Output (mm)	2*3
Max Adapter (Pcs)	8
PLC Splitter (Pcs)	1/8*1
IP code	IP65
Packing Information	G.W.:24.4Kg QTY:40Pcs MEAS.:500*385*620mm



FTTH TERMINATION BOX
FAB-HGT-8A-1



Main features

- Advanced structure design.
- Material: PP or PC+ABS.
- Moisture proof, waterproof, dust-proof, anti-aging.
- Protection level up to IP65.
- 3 cable entries.
- Pole-mounted, aerial-mounted, wall-mounted.

Specifications	
Material	PC+ABS/PP+GF
L*W*H (mm)	281*177*80
Max Splicing Capacity (core)	36
Max Input (mm)	3*(Ø14)
Max Output (mm)	8*(2*3~5)
Max Adapter (Pcs)	8
PLC Splitter (Pcs)	1/8*2
IP code	IP65
Packing Information	G.W.:12.9Kg QTY:10Pcs MEAS.:400*310*565mm



FTTH TERMINATION BOX

FAB-HGT-8A-2



Main features

- Advanced structure design.
- Material: PP or PC+ABS.
- Moisture proof, waterproof, dust-proof, anti-aging.
- Protection level up to IP65.
- 3 cable entries.
- Pole-mounted, aerial-mounted, wall-mounted.



Specifications

Specifications	
Material	PC+ABS/PP+GF
L*W*H (mm)	281*177*80
Max Splicing Capacity (core)	36
Max Input (mm)	3*(Ø14)
Max Output (mm)	8*(2*3~5)
Max Adapter (Pcs)	9
PLC Splitter (Pcs)	1/8*2
IP code	IP65
Packing Information	G.W.:12.9Kg QTY:10Pcs MEAS.:400*310*565mm

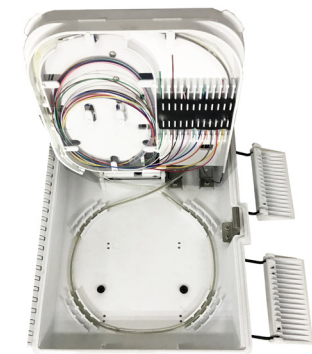
FTTH TERMINATION BOX

FAB-HGT-8B

Main features

- Advanced structure design.
- Material: PC+ABS or ABS.
- Moisture proof, waterproof, dust-proof, anti-aging.
- Protection level up to IP65
- 1 oval optical cable entry, 12 drop cable ports.
- Installation method: pole-mounted, aerial-mounted, wall-mounted

Specifications	
Material	ABS+PC/ABS
L*W*H (mm)	250*200*72
Max Splicing Capacity (core)	12
Max Input (mm)	2* (Ø18)
Max Output (mm)	12* (Ø2~10)
Max Adapter (Pcs)	8 SC
PLC Splitter (Pcs)	1*(1*8 plug-in splitter)
IP code	IP65
Packing Information	G.W.:13.7Kg QTY:10Pcs MEAS.:460*290*570mm



FTTH TERMINATION BOX
FAB-HGT-8B-2

Main features

- Advanced structure design.
- Material: PC+ABS or ABS.
- Moisture proof, waterproof, dust-proof, anti-aging.
- Protection level up to IP65
- 1 oval optical cable entry, 12 drop cable ports.
- Installation method: pole-mounted, aerial-mounted, wall-mounted

www.fibramerica.com

Specifications	
Material	ABS+PC/ABS
L*W*H (mm)	267*207*95
Max Splicing Capacity (core)	26
Max Input (mm)	Ø8~18
Max Output (mm)	2*3~Ø5
Max Adapter (Pcs)	/
PLC Splitter (Pcs)	1*(1*8 plug-in splitter)
IP code	IP65
Packing Information	G.W.:13.5Kg QTY:10Pcs MEAS.:460*290*570mm



FTTH TERMINATION BOX

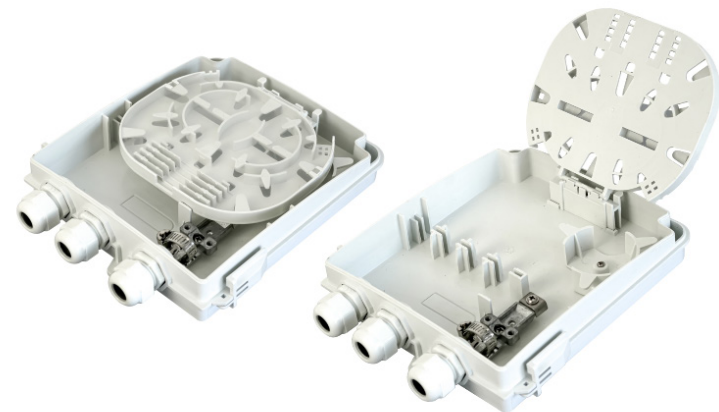
FAB-HGT-8C



Main features

- Total enclosed structure, be in nice shape.
- Material is PC+ABS
- Wet-proof, water-proof, dust-proof, anti-aging.
- Protection level up to IP65.
- Cable, pigtails, patch cords are running through own path without disturbing each other.
- Wall-mounted.

Specifications	
Material	PC+ABS/ABS
L*W*H (mm)	207*160*46
Max Splicing Capacity (core)	8
Max Input (mm)	12(PG13.5)
Max Output (mm)	12(PG13.5)
Max Adapter (Pcs)	8
PLC Splitter (Pcs)	1*8 PLC
IP code	IP65
Packing Information	G.W.:21Kg QTY:40Pcs MEAS.:450*385*620mm



FTTH TERMINATION BOX

FAB-HGT-8CY



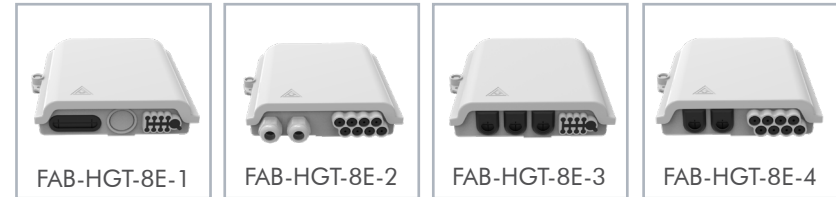
Main features

- Advanced structure design.
- Material: PC+ABS.
- Dust-proof, anti-aging.
- Protection level up to IP20.
- The interior is equipped with 1x2 FTB splitter, 1x8 PLC splitter.
- Installation method: wall-mounted.

www.fibramerica.com

Specifications	
Material	PC+ABS/ABS
L*W*H (mm)	189*127*60
Max Splicing Capacity (core)	2
Max Input (mm)	/
Max Output (mm)	/
Max Adapter (Pcs)	10
PLC Splitter (Pcs)	1*2 FBT+1*8 PLC
IP code	IP20
Packing Information	G.W: 17Kg QTY:40Pcs MEAS.:420*270*630mm



FTTH TERMINATION BOX
FAB-HGT-8E

Main features

- Advanced structure design, easy operation and reasonable routing.
- Material: PC+ABS.
- Moisture proof, waterproof, dust-proof, anti-aging.
- Protection level up to IP68
- Multiple entry and exit interfaces to choose from.
- Installation method: pole-mounted, wall-mounted.

Specifications	
Material	PC+ABS/ABS
L*W*H (mm)	227*181*54.5
Max Splicing Capacity (core)	8
Max Input (mm)	12(PG13.5)
Max Output (mm)	2*3~Ø5
Max Adapter (Pcs)	8
PLC Splitter (Pcs)	1*8*1
IP code	IP65
Packing Information	G.W.:14.1Kg QTY:20Pcs MEAS.:530*420*390mm



FTTH TERMINATION BOX

FAB-HGT-8F



Main features

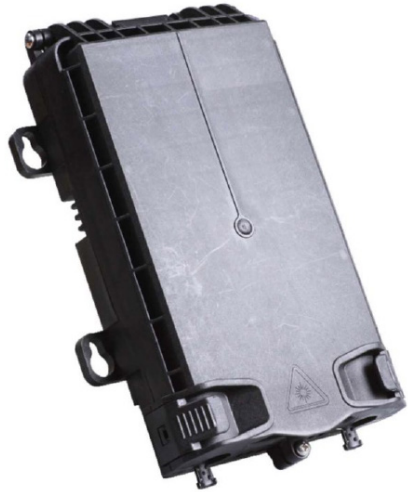
- Total enclosed structure.
- Material: PC+ABS.
- Wet-proof, water-proof, dust-proof, anti-aging.
- Protection level up to IP65.
- Clamping for feeder cable and drop cable, fiber splicing, fixation, storage, distribution...etc all in one.
- Cable, pigtails, patch cords are running through own path without disturbing each other.
- Wall-mounted.

www.fibramerica.com

Specifications	
Material	PC+ABS/ABS
L*W*H (mm)	216*155*45
Max Splicing Capacity (core)	16
Max Input (mm)	1*(Ø6.5)
Max Output (mm)	8*(Ø2~3)/4*Ø5
Max Adapter (Pcs)	8
PLC Splitter (Pcs)	1*8*2
IP code	IP65
Packing Information	G.W.:16Kg QTY:40Pcs MEAS.:456*356*600mm

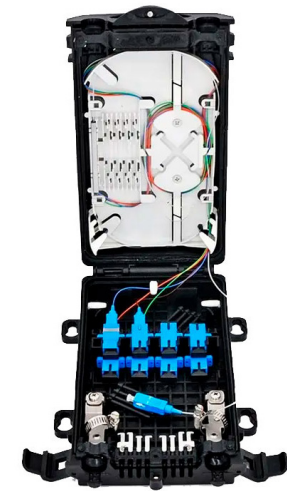


FTTH TERMINATION BOX

FAB-HGT-8G

Main features

- Gel sealing for excellent sealing and re-sealing performance
- High quality engineering material of PP with good mechanical strength, sturdiness and durability
- Clamping for feeder cable and drop cable, fiber splicing, fixation, storage and distribution in one box

Specifications	
Material	PP
L*W*H (mm)	232*156*53.2mm
Max Splicing Capacity (core)	8
Max Input (mm)	8~16mm
Drop Cable Diameter	3mm round cable, 2×3m drop cable
Max Adapter (Pcs)	8
PLC Splitter (Pcs)	1x8
IP code	IP67
Installation Method	Wall mounting and pole mounting (pole ring is optional)



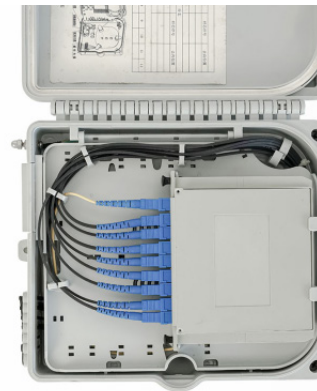
FTTH TERMINATION BOX
FAB-HGT-8H

Main features

- Total enclosed structure.
- Material: PC+ABS.
- Wet-proof, water-proof, dust-proof, anti-aging.
- Protection level up to IP65.
- Clamping for feeder cable and drop cable, fiber splicing, fixation, storage, distribution...etc all in one.
- Wall-mounted or poled-mounted, suitable for both indoor and outdoor uses.

www.fibramerica.com

Specifications	
Material	PC+ABS/ABS
L*W*H (mm)	233*214*66
Max Splicing Capacity (core)	28
Max Input (mm)	15
Max Output (mm)	2*3
Max Adapter (Pcs)	/
PLC Splitter (Pcs)	1(1*8 plug-in splitter)
IP code	IP65
Packing Information	G.W.:20Kg QTY:20Pcs MEAS.:500*480*510mm





FIDRAMÉRICA

FTTH TERMINATION BOX
FAB-HGT-8KX

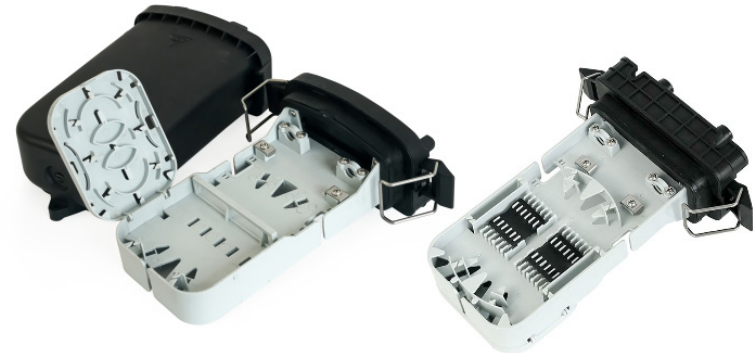


Main features

- Advanced structure design, easy operation and reasonable routing.
- Material: PP.
- Moisture proof, waterproof, dust-proof, anti-aging.
- Protection level up to IP65.
- 2 cable entries.
- Installation method: pole-mounted, aerial-mounted, wall-mounted.

www.fibramerica.com

Specifications	
Material	PP
L*W*H (mm)	268*154*83
Max Splicing Capacity (core)	24
Max Input (mm)	2*(Ø12)
Max Output (mm)	8*(2*3)
Max Adapter (Pcs)	9
PLC Splitter (Pcs)	1/8*2
IP code	IP65
Packing Information	G.W.:12Kg QTY:10Pcs MEAS.:370*295*570mm





FTTH TERMINATION BOX

FAB-HGT-8KX-1

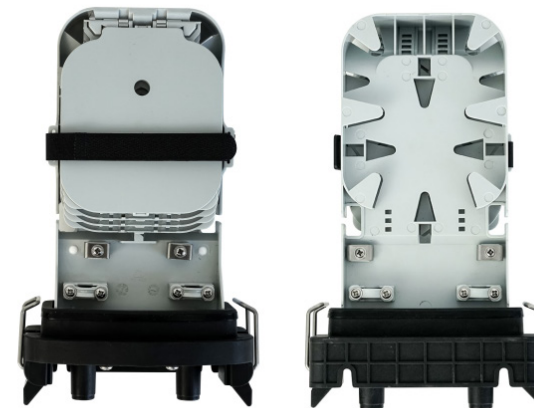


Main features

- Advanced structure design, easy operation and reasonable routing.
- Material: PP.
- Moisture proof, waterproof, dust-proof, anti-aging.
- Protection level up to IP65.
- 2 cable entries.
- Installation method: pole-mounted, aerial-mounted, wall-mounted.

www.fibramerica.com

Specifications	
Material	PP
L*W*H (mm)	268*154*83
Max Splicing Capacity (core)	48
Max Input (mm)	2*(Ø12)
Max Output (mm)	8*(2*3)
Max Adapter (Pcs)	/
PLC Splitter (Pcs)	1/8*2
IP code	IP65
Packing Information	G.W.:12Kg QTY:10Pcs MEAS.:370*295*570mm



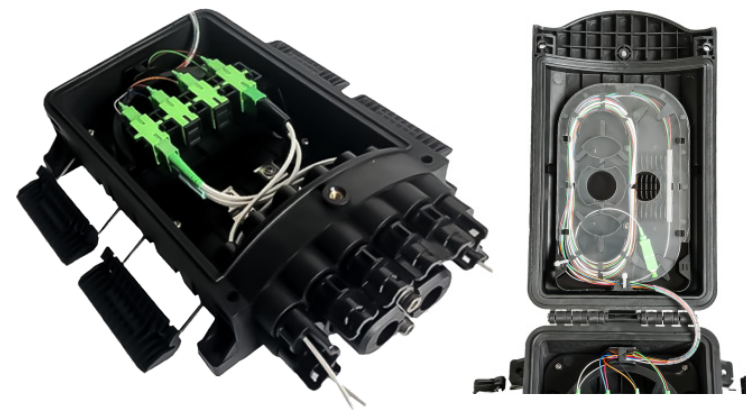
FTTH TERMINATION BOX

FAB-HGT-8Q

Main features

- Advanced structure design, easy operation and reasonable routing.
- Material: PP or PC+ABS.
- Moisture proof, waterproof, dust-proof, anti-aging.
- Protection level up to IP68.
- 1 oval optical cable entry.
- Installation method: pole-mounted, aerial-mounted, wall-mounted.

Specifications	
Material	PC+ABS/PP
L*W*H (mm)	280*182*82
Max Splicing Capacity (core)	12
Max Input (mm)	13
Max Output (mm)	2*3~7
Max Adapter (Pcs)	8
PLC Splitter (Pcs)	1/8*1
IP code	IP68
Packing Information	G.W.:15Kg QTY:10Pcs MEAS.:410*315*510mm



FTTH TERMINATION BOX

FAB-HGT-8S

Main features

- Support pole/wall mounting, Pedestal mounting and Aerial cable mounting installation
- Manage fibers in a reasonable fiber radius condition
- Fiber bend radius control more than 40mm
- 1*8 micro type Splitter can be installed
- 8pcs SC/APC adapter can be installed
- 8 ports cable entrance for distribution cables for option, 2*3mm FTTH Drop Cable

www.fibramerica.com

Specifications	
Material	PC+ABS/PP
L*W*H (mm)	280*182*82
Max Splicing Capacity (core)	24
Max Input (mm)	4 * Ø8-13mm
Max Output (mm)	8* 2x3mm
Max Adapter (Pcs)	8
PLC Splitter (Pcs)	1x8
IP code	IP68
Packing Information	GW:20kgs QTY: 12pcs/carton 570*500*325mm



FTTH TERMINATION BOX

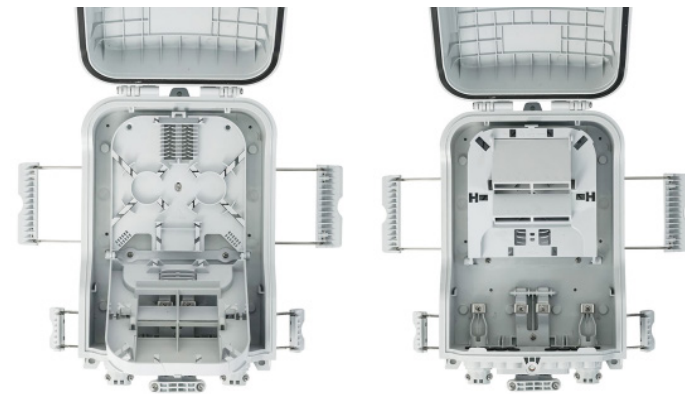
FAB-HGT-8SX-2



Main features

- Advanced structure design, easy operation and reasonable routing.
- Material: PP or PC+ABS.
- Moisture proof, waterproof, dust-proof, anti-aging.
- Protection level up to IP68.
- 1 oval optical cable entry, 2 branch optical cable entries and 16pcs. of household.
- Installation method: pole-mounted, aerial-mounted, wall-mounted.

Specifications	
Material	PC+ABS/ABS
L*W*H (mm)	319*200*97
Max Splicing Capacity (core)	36
Max Input (mm)	2*(Ø18)
Max Output (mm)	16
Max Adapter (Pcs)	8 (mini sc)
PLC Splitter (Pcs)	1*8*3
IP code	IP65
Packing Information	G.W.:14Kg QTY:10Pcs MEAS.:450*360*630mm



FTTH TERMINATION BOX

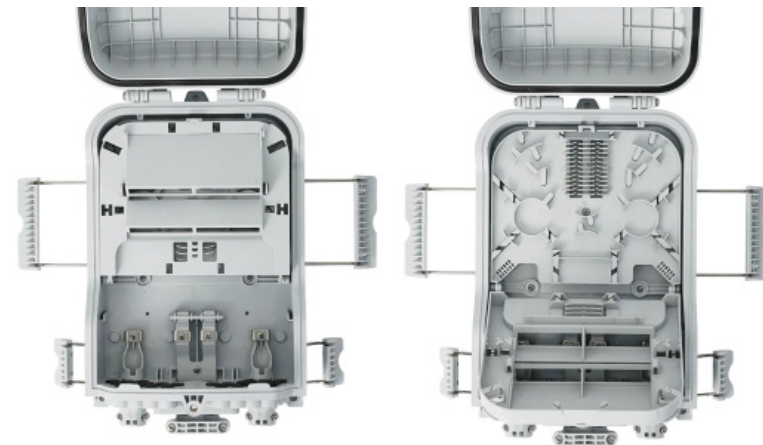
FAB-HGT-8SX-3

Main features

- Advanced structure design, easy operation and reasonable routing.
- Material: PP or PC+ABS.
- Moisture proof, waterproof, dust-proof, anti-aging.
- Protection level up to IP65.
- 1 oval optical cable entry, 2 branch optical cable entries and 24pcs. of household.
- Installation method: pole-mounted, aerial-mounted, wall-mounted.

www.fibramerica.com

Specifications	
Material	PC+ABS/ABS
L*W*H (mm)	319*200*97
Max Splicing Capacity (core)	24
Max Input (mm)	18
Max Output (mm)	2*3 ~5
Max Adapter (Pcs)	24
PLC Splitter (Pcs)	1*8: 3pcs
IP code	IP65
Packing Information	G.W.:14Kg QTY:10Pcs MEAS.:450*360*630mm



FTTH TERMINATION BOX

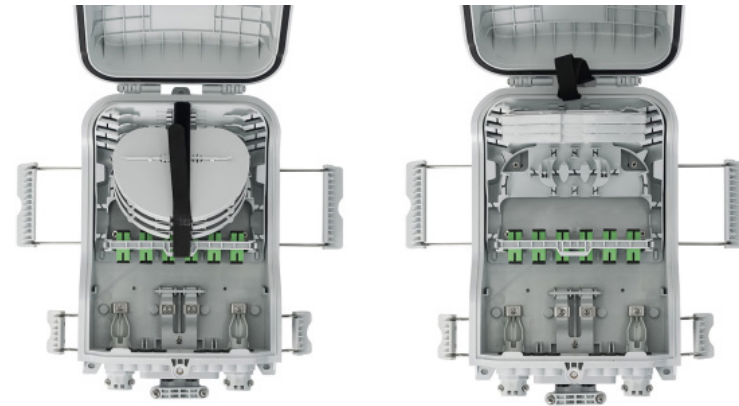
FAB-HGT-8SX-4



Main features

- Advanced structure design, easy operation and reasonable routing.
- Material: PP or PC+ABS.
- Moisture proof, waterproof, dust-proof, anti-aging.
- Protection level up to IP68.
- 1 oval optical cable entry, 2 branch optical cable entries and 16pcs. of household.
- Installation method: pole-mounted, aerial-mounted, wall-mounted.

Specifications	
Material	PC+ABS/ABS
L*W*H (mm)	319*200*97
Max Splicing Capacity (core)	96
Max Input (mm)	18
Max Output (mm)	2*3 ~5
Max Adapter (Pcs)	16
PLC Splitter (Pcs)	1*8 / 1*16
IP code	IP65
Packing Information	G.W.:14Kg QTY:10Pcs MEAS.:450*360*630mm



FTTH TERMINATION BOX

FAB-HGT-8SX-5

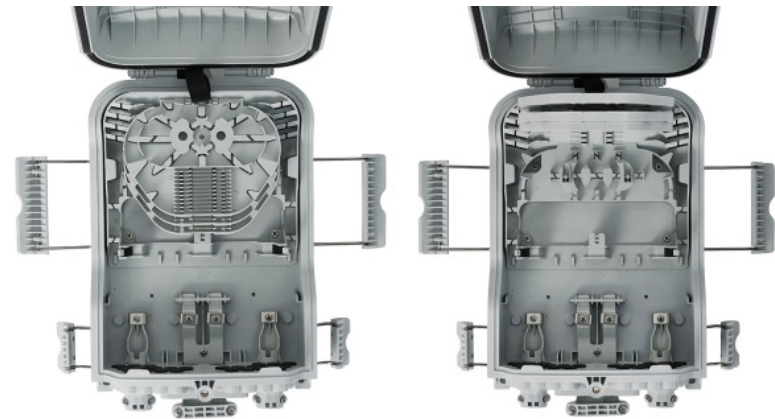


Main features

- Advanced structure design, easy operation and reasonable routing.
- Material: PP or PC+ABS.
- Moisture proof, waterproof, dust-proof, anti-aging.
- Protection level up to IP65.
- 1 oval optical cable entry, 2 branch optical cable entries and 24pcs. of household.
- Installation method: pole-mounted, aerial-mounted, wall-mounted.

www.fibramerica.com

Specifications	
Material	PC+ABS/ABS
L*W*H (mm)	319*200*97
Max Splicing Capacity (core)	72
Max Input (mm)	18
Max Output (mm)	2*3 ~5
Max Adapter (Pcs)	24
PLC Splitter (Pcs)	1*8 1*16
IP code	IP65
Packing Information	G.W.:14Kg QTY:10Pcs MEAS.:450*360*630mm



FTTH TERMINATION BOX

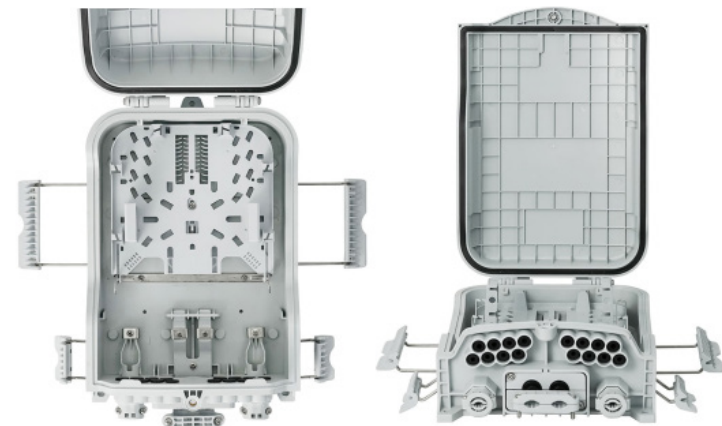
FAB-HGT-8SX-6



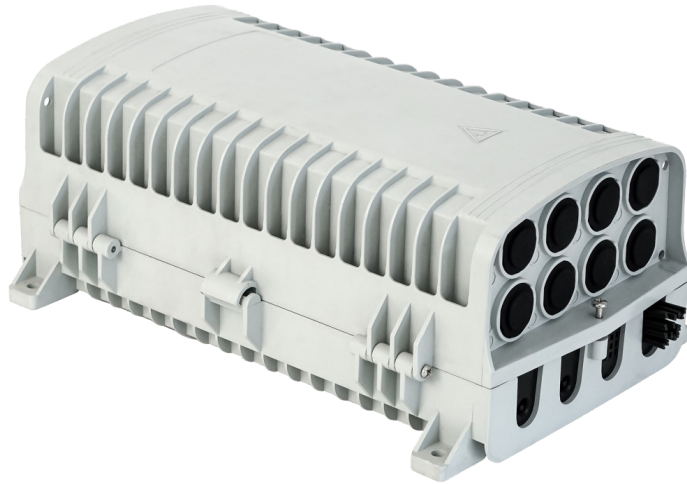
Main features

- Advanced structure design, easy operation and reasonable routing.
- Material: PP or PC+ABS.
- Moisture proof, waterproof, dust-proof, anti-aging.
- Protection level up to IP65.
- 1 oval optical cable entry, 2 branch optical cable entries and 16pcs. of household.
- Installation method: pole-mounted, aerial-mounted, wall-mounted.

Specifications	
Material	PC+ABS/ABS
L*W*H (mm)	319*200*97
Max Splicing Capacity (core)	16
Max Input (mm)	2* Ø18
Max Output (mm)	2*3 ~5
Max Adapter (Pcs)	16
PLC Splitter (Pcs)	1*8 1*16
IP code	IP65
Packing Information	G.W.:14Kg QTY:10Pcs MEAS.:450*360*630mm



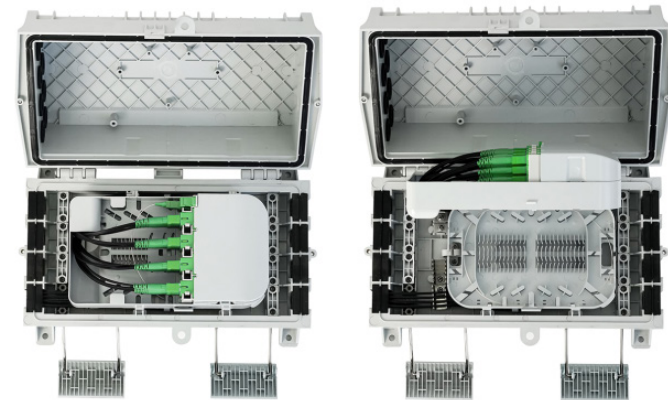
FTTH TERMINATION BOX

FAB-HGT-8X-1

Main features

- Advanced structure design, easy operation and reasonable routing.
- Material: PP/PC+ABS/ABS.
- Moisture proof, waterproof, dust-proof, anti-aging.
- Protection level up to IP65.
- 6 cable entries, 32 pcs of household.
- Installation method: pole-mounted, aerial-mounted, wall-mounted.

www.fibramerica.com

Specifications	
Material	PP/PC+ABS/ABS
L*W*H (mm)	313 *195*120
Max Splicing Capacity (core)	72
Max Input (mm)	16
Max Output (mm)	2*3
Max Adapter (Pcs)	18
PLC Splitter (Pcs)	1*8 PLC:2Pcs/1*16 PLC:1Pcs
IP code	IP65
Packing Information	G.W.:16Kg QTY:10Pcs MEAS.: 450*345*685mm



FTTH TERMINATION BOX

FAB-HGT-8X-2



Main features

- Advanced structure design, easy operation and reasonable routing.
- Material: PP/PC+ABS/ABS.
- Moisture proof, waterproof, dust-proof, anti-aging.
- Protection level up to IP65.
- 8 cable entries.
- Installation method: pole-mounted, aerial-mounted, wall-mounted.

Specifications	
Material	PP/PC+ABS/ABS
L*W*H (mm)	313*195*98
Max Splicing Capacity (core)	72
Max Input (mm)	7~16
Max Output (mm)	7~16
Max Adapter (Pcs)	/
PLC Splitter (Pcs)	/
IP code	IP65
Packing Information	G.W.:16Kg QTY:10Pcs MEAS.:450*345*560mm



FTTH TERMINATION BOX

FAB-HGT-8ZT

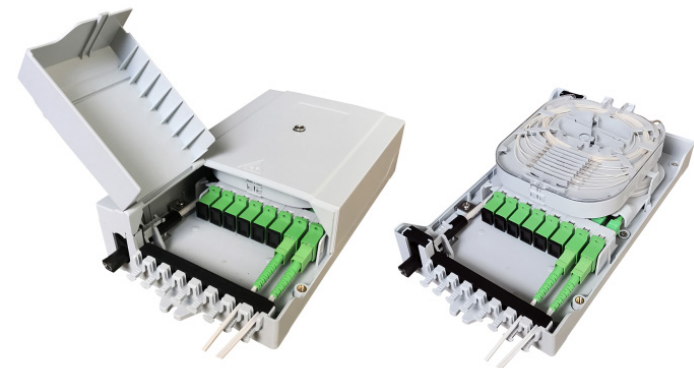


Main features

- Total enclosed structure.
- Material: PC+ABS.
- Wet-proof, water-proof, dust-proof, anti-aging.
- Protection level up to IP54.
- Cable, pigtails, patch cords are running through own path without disturbing each other.
- Distribution panel can be flipped up, feeder cable can be placed in a cup-joint way.
- Cabinet can be installed by the way of wall-mounted.

www.fibramerica.com

Specifications	
Material	PC+ABS/ABS
L*W*H (mm)	235*126*51
Max Splicing Capacity (core)	16
Max Input (mm)	4*(Ø10)
Max Output (mm)	8*(Ø5)
Max Adapter (Pcs)	8
PLC Splitter (Pcs)	1/8*2
IP code	IP54
Packing Information	G.W.:31Kg QTY:50Pcs MEAS.:720*265*615mm



FTTH TERMINATION BOX

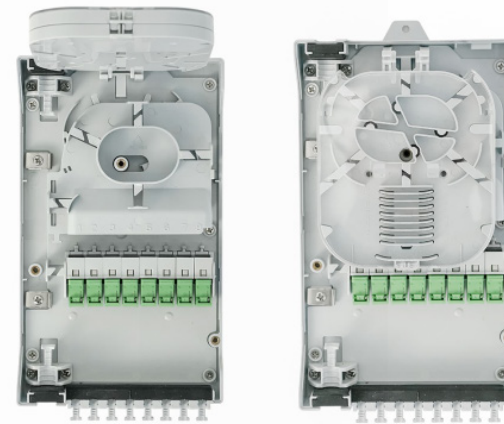
FAB-HGT-8ZT-1



Main features

- Total enclosed structure.
- Material: PC+ABS.
- Wet-proof, water-proof, dust-proof, anti-aging.
- Protection level up to IP54.
- Cable, pigtails, patch cords are running through own path without disturbing each other.
- Distribution panel can be flipped up, feeder cable can be placed in a cup-joint way.
- Cabinet can be installed by the way of wall-mounted.

Specifications	
Material	PC+ABS/ABS
L*W*H (mm)	235*126*51
Max Splicing Capacity (core)	16
Max Input (mm)	4*(Ø10)
Max Output (mm)	8*(Ø5)
Max Adapter (Pcs)	8
PLC Splitter (Pcs)	1/8*2
IP code	IP54
Packing Information	G.W.:31Kg QTY:50Pcs MEAS.: 720*265*615mm



FTTH TERMINATION BOX

FAB-HGT-8ZT-2

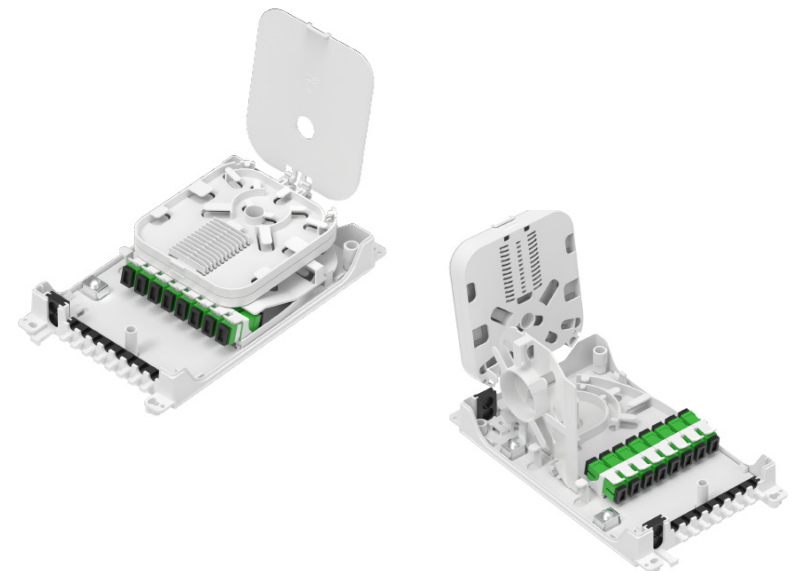


Main features

- Anti-UV (Ultraviolet)
- Economic design with plastic adaptor panel
- Uncut cable port for feeder cables.
- Cable, pigtails, and patch cords are running through their own paths without disturbing each other, easy maintenance.
- Box can be installed by the way of wall-mounted.

www.fibramerica.com

Specifications	
Material	PC+ABS
L*W*H (mm)	222×126×50
Max Splicing Capacity (core)	24 (2 splice tray_
Cable Ports	2 Ports (For main cable) 8 Ports (For drop cable)
Adapter Ports (SC)	8
PLC Splitter (Pcs)	1/8 PLC
IP code	IP54
Packing Information	G.W.:31Kg QTY:50Pcs MEAS.: 720*265*615mm



FTTH TERMINATION BOX

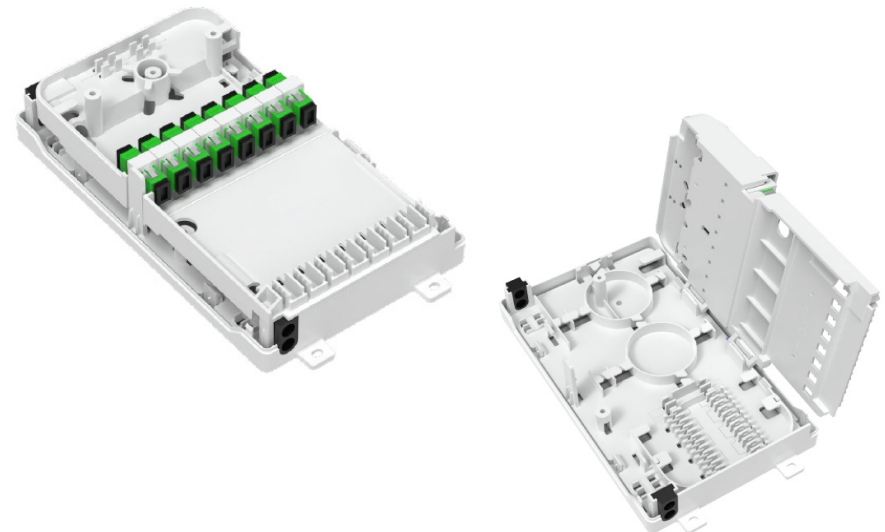
FAB-HGT-8ZT-3



Main features

- Beautiful and compact model, convenient installation
- Nontoxic for all the material
- Non-corrosive for metal component
- While activating user operation, insert the field assembly connector into the adaptor
- Suitable for wall-mounted installation
- Neat fiber routing management

Specifications	
Material	PC+ABS
L*W*H (mm)	230×130×58
Max Splicing Capacity (core)	24 (1 splice tray)
Cable Ports	2 Ports (For main cable) 8 Ports (For drop cable)
Adapter Ports (SC)	8
PLC Splitter (Pcs)	1/8 PLC
IP code	IP54
Packing Information	G.W.:31Kg QTY:50Pcs MEAS.: 720*265*615mm



FTTH TERMINATION BOX

FAB-HGT-8ZX - Raskbox

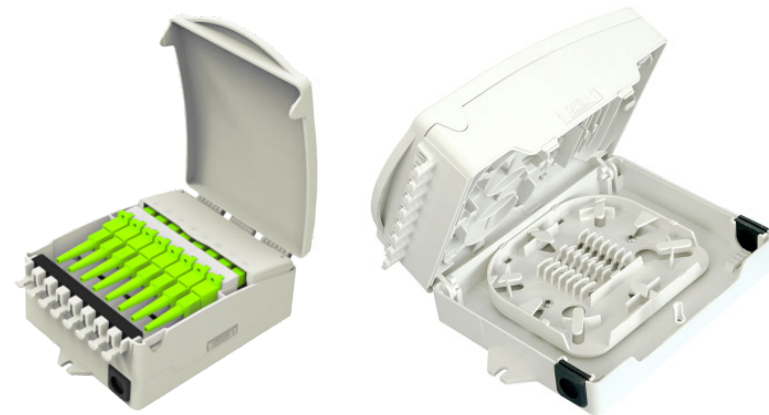


Main features

- Total enclosed structure.
- Material: PC+ABS.
- Wet-proof, water-proof, dust-proof, anti-aging.
- Protection level up to IP54.
- Cable, pigtails, patch cords are running through own path without disturbing each other.
- Distribution panel can be flipped up, feeder cable can be placed in a cup-joint way.
- Cabinet can be installed by the way of wall-mounted.

www.fibramerica.com

Specifications	
Material	PC+ABS/ABS
L*W*H (mm)	152*106*59
Max Splicing Capacity (core)	12
Max Input (mm)	Ø12
Max Output (mm)	2*3~Ø5
Max Adapter (Pcs)	8
PLC Splitter (Pcs)	1*8 PLC
IP code	IP54
Packing Information	G.W.:15Kg QTY:40Pcs MEAS.: 4650*340*360mm



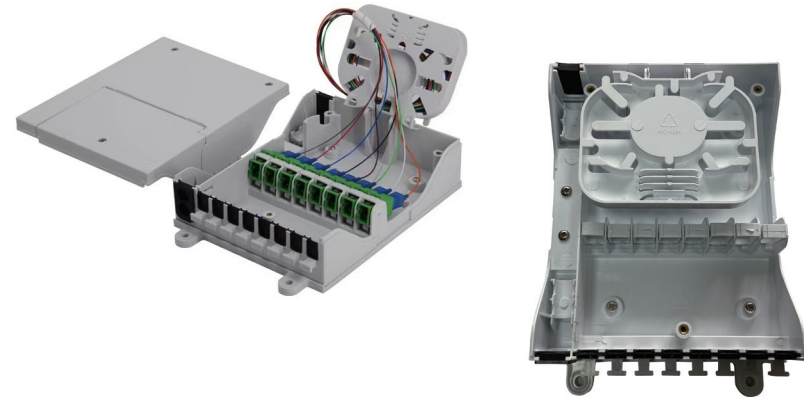
FTTH TERMINATION BOX

FAB-HGT-8ZTX

Main features

- Mix fiber split, fusion, distribution and storage in a box.
- 2inputs can use multi-fiber cable or uncut cable, 8outputs for FTTH, convenient fast to operate.
- The fiber bending radius minimum is 20mm.
- The lid of the box have round edge sand closed by a screw, opening of the lid will not affect the movement of the other parts of the box.
- Unique design of separate covers for the adapter and cable entry/ exit ports to makes it more safety, nice and humanity, both cover is removable.

Specifications	
Material	PC+ABS/ABS
L*W*H (mm)	170*130*40
Cable ports	2in, 8out
Cable diameter(mm)	In:10, out: 2*3
Max. Fusion Capacity	4 fibers
Max. splitter	1x2,1x4 or 1x8 PLC
Max. Adapter	8 SC
IP	30
Working Environment	Indoor



FTTH TERMINATION BOX

FAB-HGT-10A

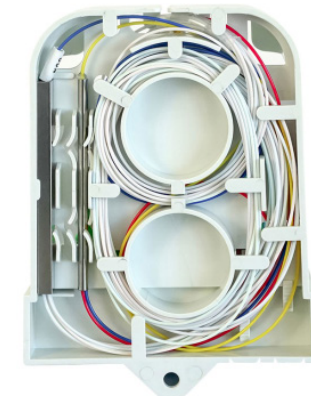
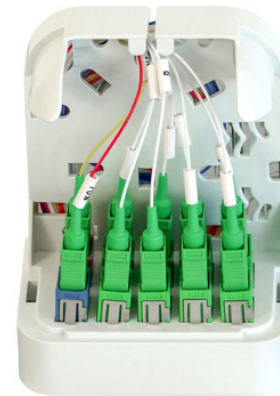


Main features

- Advanced structure design, small size and reasonable structure.
- Material: PC+ABS.
- Dust-proof, anti-aging.
- Protection level up to IP20.
- The interior is equipped with 1x2 FTB splitter, 1x8 PLC splitter.
- Installation method: wall-mounted.

www.fibramerica.com

Specifications	
Material	PC+ABS/ABS
L*W*H (mm)	124*84*55
Max Splicing Capacity (core)	12
Max Input (mm)	Ø11
Max Output (mm)	/
Max Adapter (Pcs)	10
PLC Splitter (Pcs)	1/2 or 1/8
IP code	IP20
Packing Information	G.W.:17Kg QTY:40Pcs MEAS.:420*270*630mm



FTTH TERMINATION BOX

FAB-HGT-10CY



Main features

- Advanced structure design, small size and reasonable structure.
- Material: PC+ABS.
- Dust-proof, anti-aging.
- Protection level up to IP54.
- The interior is equipped with 1x2 FTB splitter, 1x8 PLC splitter.
- Installation method: wall-mounted.

Specifications	
Material	PC+ABS/ABS
L*W*H (mm)	189*127*77
Max Splicing Capacity (core)	12
Max Input (mm)	Ø11
Max Output (mm)	2*3
Max Adapter (Pcs)	10
PLC Splitter (Pcs)	1/2 or 1/8
IP code	IP54
Packing Information	G.W.:15Kg QTY:40Pcs MEAS.:440*290*710mm



FTTH TERMINATION BOX

FAB-HGT-10ZX- Raskbox

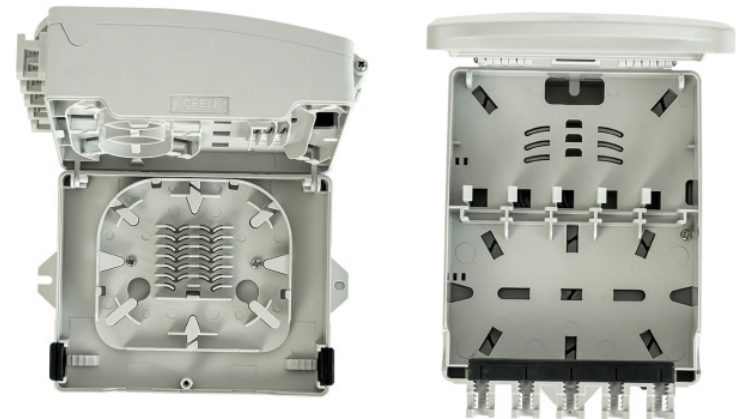


Main features

- Total enclosed structure.
- Material: PC+ABS.
- Wet-proof, water-proof, dust-proof, anti-aging.
- Protection level up to IP54.
- Clamping for feeder cable and drop cable, fiber splicing, fixation, storage, distribution... etc, all in one.
- Distribution panel can be flipped up, feeder cable can be placed in a cup-joint way.
- Wall-mounted.

www.fibramerica.com

Specifications	
Material	PC+ABS/ABS
L*W*H (mm)	153*106*64
Max Splicing Capacity (core)	12
Max Input (mm)	Ø12
Max Output (mm)	2*3 ~ Ø5
Max Adapter (Pcs)	10
PLC Splitter (Pcs)	/
IP code	IP54
Packing Information	G.W.:18Kg QTY:50Pcs MEAS.:570*340*355mm



FTTH TERMINATION BOX

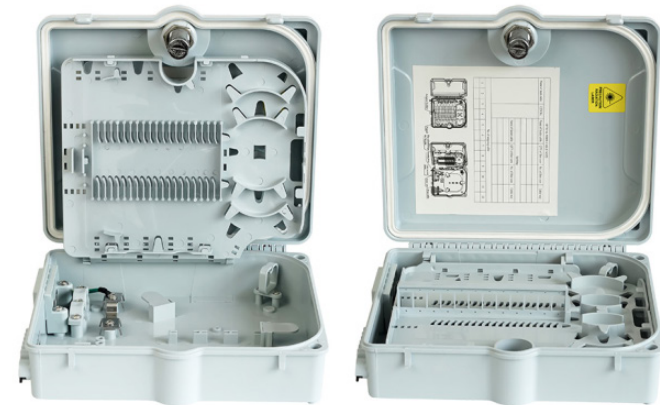
FAB-HGT-12C



Main features

- Advanced structure design, easy operation and reasonable routing.
- Material: PC+ABS.
- Moisture proof, wsterproof, dust-proof, anti-aging.
- Protection level up to IP65.
- 1 oval optical cable entry, 12 drop cable ports.
- Installation method: pole-mounted, wall-mounted.

Specifications	
Material	PC+ABS/ABS
L*W*H (mm)	233*214*66
Max Splicing Capacity (core)	40
Max Input (mm)	2*(16)
Max Output (mm)	12*(2*3)
Max Adapter (Pcs)	12
PLC Splitter (Pcs)	1*8 PLC
IP code	IP65
Packing Information	G.W.:21.2Kg QTY:20Pcs MEAS.: 500*480*510mm



FTTH TERMINATION BOX

FAB-HGT-12D

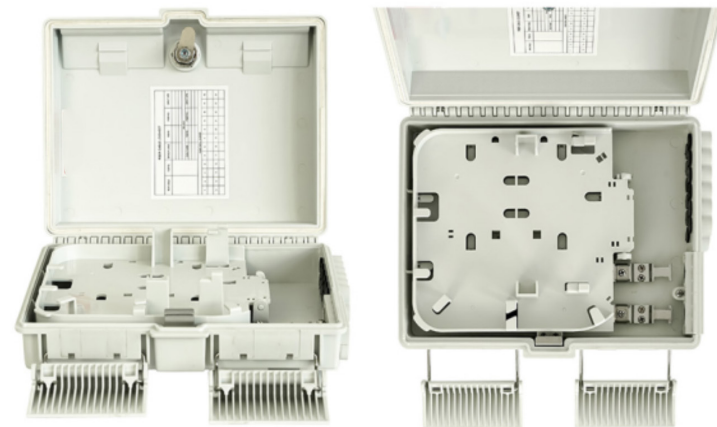


Main features

- Advanced structure design, easy operation and reasonable routing.
- Material: PC+ABS.
- Moisture proof, wsterproof, dust-proof, anti-aging.
- Protection level up to IP65.
- 1 oval optical cable entry, 12 drop cable ports.
- Installation method: pole-mounted, wall-mounted, aerial-mounted.

www.fibramerica.com

Specifications	
Material	PC+ABS/ABS
L*W*H (mm)	267*207*95
Max Splicing Capacity (core)	24
Max Input (mm)	Ø8~Ø18
Max Output (mm)	2*3~5
Max Adapter (Pcs)	12
PLC Splitter (Pcs)	1*8
IP code	IP65
Packing Information	G.W.:13.5Kg QTY:10Pcs MEAS.: 460*290*570mm



FTTH TERMINATION BOX

FAB-HGT-12E



Main features

- Advanced structure design, easy operation and reasonable routing.
- Material: PC+ABS.
- Moisture proof, wsterproof, dust-proof, anti-aging.
- Protection level up to IP65.
- 1 oval optical cable entry, 2 branch optical cable entries and 16 pcs of household.
- Installation method: pole-mounted, wall-mounted, aerial-mounted.

Specifications	
Material	PC+ABS/ABS
L*W*H (mm)	290*175*83
Max Splicing Capacity (core)	18
Max Input (mm)	15
Max Output (mm)	2*3~Ø5
Max Adapter (Pcs)	12
PLC Splitter (Pcs)	1*8
IP code	IP65
Packing Information	G.W.:13Kg QTY:10Pcs MEAS.: 410*320*570mm



FTTH TERMINATION BOX
FAB-HGT-12E-1

Main features

- Advanced structure design, easy operation and reasonable routing.
- Material: PC+ABS.
- Moisture proof, waterproof, dust-proof, anti-aging.
- Protection level up to IP65.
- 1 oval optical cable entry, 2 branch optical cable entries and 16 pcs of household.
- Installation method: wall-mounted, pole-mounted, aerial-mounted.

www.fibramerica.com

Specifications	
Material	PC+ABS/ABS
L*W*H (mm)	290*175*83
Max Splicing Capacity (core)	12
Max Input (mm)	15
Max Output (mm)	2*3~Ø5
Max Adapter (Pcs)	9
PLC Splitter (Pcs)	1*(1*8 plug-in splitter) or 1*(1*8 PLC)
IP code	IP65
Packing Information	G.W.:13Kg QTY:10Pcs MEAS.:410*320*570mm



FTTH TERMINATION BOX

FAB-HGT-12E-3



Main features

- Advanced structure design, easy operation and reasonable routing.
- Material: PC+ABS.
- Moisture proof, wsterproof, dust-proof, anti-aging.
- Protection level up to IP65.
- 1 oval optical cable entry, 2 branch optical cable entries and 16 pcs of household.
- Installation method: pole-mounted, wall-mounted, aerial-mounted.

Specifications	
Material	PC+ABS/ABS
L*W*H (mm)	290*175*83
Max Splicing Capacity (core)	72
Max Input (mm)	15
Max Output (mm)	2*3~Ø5
Max Adapter (Pcs)	12
PLC Splitter (Pcs)	1*16 PLC or 1*8 PLC
IP code	IP65
Packing Information	G.W.:13Kg QTY:10Pcs MEAS.: 410*320*570mm



FTTH TERMINATION BOX

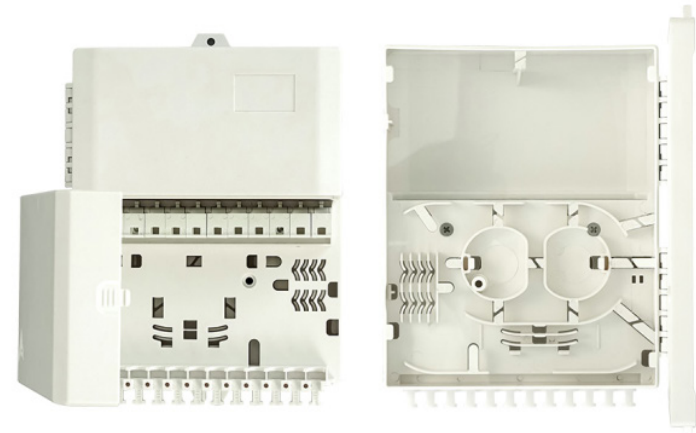
FAB-HGT-12ZS

Main features

- Total enclosed structure.
- Material: PC+ABS
- Wet-proof, water-proof, dust-proof, anti-aging
- Protection level up to IP54
- Cable, pigtails, patch cords are running through own path without disturbing each other.
- Distribution panel can be flipped up, feeder cable can be placed in a cup-joint way.
- Cabinet can be installed by the way of wall-mounted.

www.fibramerica.com

Specifications	
Material	PC+ABS/ABS
L*W*H (mm)	205*153*52
Max Splicing Capacity (core)	8
Max Input (mm)	2*3~Ø5
Max Output (mm)	2*3~Ø5
Max Adapter (Pcs)	12
PLC Splitter (Pcs)	1*4+1*8 PLC
IP code	IP54
Packing Information	G.W.:11Kg QTY:20Pcs MEAS.: 440*340*340mm



FTTH TERMINATION BOX

FAB-HGT-12ZT

Main features

- Total enclosed structure.
- Material: PC+ABS
- Wet-proof, water-proof, dust-proof, anti-aging
- Protection level up to IP54
- Cable, pigtails, patch cords are running through own path without disturbing each other.
- Distribution panel can be flipped up, feeder cable can be placed in a cup-joint way.
- Wall-mounted or pole-mounted, suitable for both indoor or outdoor uses.

Specifications	
Material	PC+ABS/ABS
L*W*H (mm)	205*153*68
Max Splicing Capacity (core)	20
Max Input (mm)	10
Max Output (mm)	2*3~Ø5
Max Adapter (Pcs)	12
PLC Splitter (Pcs)	1*4+1*8 PLC
IP code	IP54
Packing Information	G.W.:11Kg QTY:20Pcs MEAS.: 450*340*410mm





FTTH TERMINATION BOX

FAB-HGT-16A

Main features

- Water-proof design with IP65 Protection level
- Integrated with splice cassette and cable management system
- Manage small & large quantities of fiber with a density
- Easy to maintain and extend the capacity
- Fiber bend radius control more than 40mm
- Suitable for the fusion splice or mechanical splice
- Capacity of fiber up to 16 ports

Specifications	
Material	PC+ABS / ABS
L*W*H (mm)	300*245*100
Max Splicing Capacity (core)	24
Max Input (mm)	2 * (Ø12)
Max Output (mm)	16 * (2*3~5)
Max Adapter (Pcs)	16
PLC Splitter (Pcs)	1/8*2 or 1/16*1
IP code	IP65
Weight	1.565 KG



FTTH TERMINATION BOX

FAB-HGT-16A-1

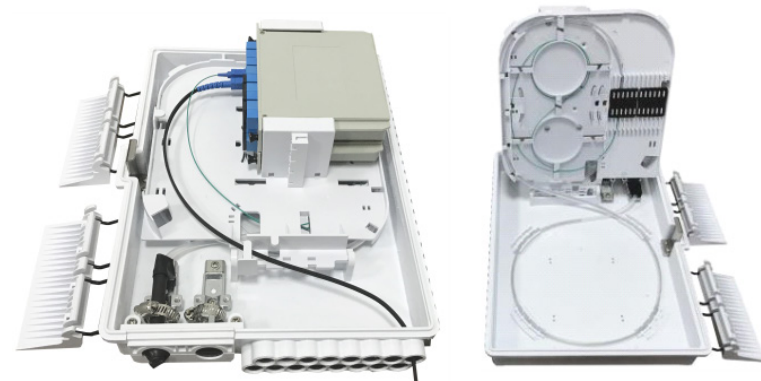


Main features

- Water-proof design with IP65 Protection level
- Integrated with splice cassette and cable management system
- Manage small & large quantities of fiber with a density
- Easy to maintain and extend the capacity
- Fiber bend radius control more than 40mm
- Suitable for the fusion splice or mechanical splice
- Capacity of fiber up to 16 ports

www.fibramerica.com

Specifications	
Material	PC+ABS / ABS
L*W*H (mm)	300*245*100
Max Splicing Capacity (core)	24
Max Input (mm)	2 * (Ø12)
Max Output (mm)	16 * (2*3~5)
Max Adapter (Pcs)	16
PLC Splitter (Pcs)	1/8*2 LGX or 1/16*1 LGX
IP code	IP65
Weight	1.565 KG



FTTH TERMINATION BOX

FAB-HGT-16A-1



Main features

- Advanced structure design, easy operation and reasonable routing.
- Material: PP or PC+ABS .
- Moisture proof, waterproof, dust-proof, anti-aging.
- Protection level up to IP65.
- 3 cable entries.
- Installation method: pole-mounted, aerial-mounted, wall-mounted.

Specifications	
Material	PP+GF/PC+ABS/ABS
L*W*H (mm)	281*177*102
Max Splicing Capacity (core)	36
Max Input (mm)	3*(Ø12)
Max Output (mm)	16*(2*3~5)
Max Adapter (Pcs)	16
PLC Splitter (Pcs)	1/8*2 or 1/16*1
IP code	IP65
Packing Information	G.W.:12Kg QTY:10Pcs MEAS.:400*310*665mm



FTTH TERMINATION BOX

FAB-HGT-16A-2



Main features

- Advanced structure design, easy operation and reasonable routing.
- Material: PP or PC+ABS .
- Moisture proof, waterproof, dust-proof, anti-aging.
- Protection level up to IP65.
- 3 cable entries.
- Installation method: pole-mounted, aerial-mounted, wall-mounted.

www.fibramerica.com

Specifications	
Material	PP+GF/PC+ABS/ABS
L*W*H (mm)	281*177*102
Max Splicing Capacity (core)	36
Max Input (mm)	3*(Ø10~16)
Max Output (mm)	16*(2*3~5)
Max Adapter (Pcs)	18
PLC Splitter (Pcs)	1/8*2 or 1/16*1
IP code	IP65
Packing Information	G.W.:12Kg QTY:10Pcs MEAS.:400*310*665mm



FTTH TERMINATION BOX

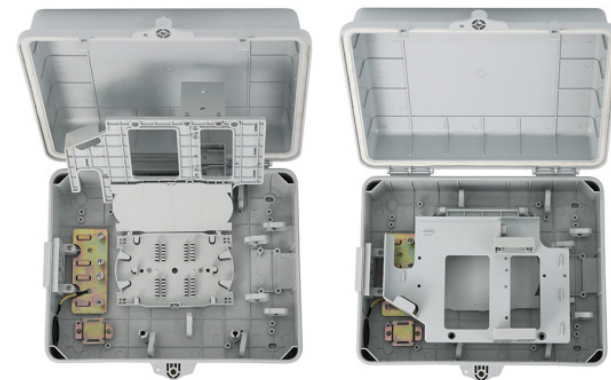
FAB-HGT-16B



Main features

- Total enclosed structure, be in nice shaped.
- Material is PC+ABS, wet-proof, water-proof, dust-proof, anti-aging.
- Protection level up to IP65.
- The two-layer structure design, optical splitter is in the upper and fiber splicing is in the lower.
- The optical module uses drawer modular design, be in strong interchangeability and versatility.
- Cabinet can be installed by the way of wall-mounted or pole-mounted.

Specifications	
Material	PC+ABS/ABS
L*W*H (mm)	360*181*90
Max Splicing Capacity (core)	48
Max Input (mm)	Ø7-Ø14
Max Output (mm)	2*3
Max Adapter (Pcs)	/
PLC Splitter (Pcs)	2*(1*8) or 1*(1*16) plug-in splitter
IP code	IP65
Packing Information	G.W.:17.5Kg QTY:8Pcs MEAS.:650*360*600mm



FTTH TERMINATION BOX

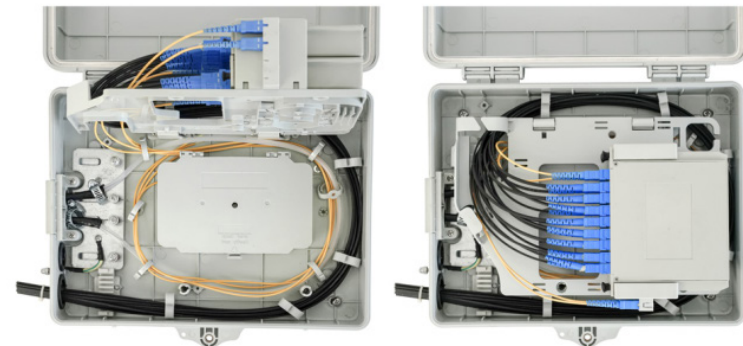
FAB-HGT-16B-1

Main features

- Total enclosed structure, be in nice shaped.
- Material is PC+ABS, wet-proof, water-proof, dust-proof, anti-aging.
- Protection level up to IP65.
- The two-layer structure design, optical splitter is in the upper and fiber splicing is in the lower.
- The optical module uses drawer modular design, be in strong interchangeability and versatility.
- Cabinet can be installed by the way of wall-mounted or pole-mounted.

www.fibramerica.com

Specifications	
Material	PC+ABS/ABS
L*W*H (mm)	294*254*106
Max Splicing Capacity (core)	12
Max Input (mm)	Ø7-Ø14
Max Output (mm)	2*3
Max Adapter (Pcs)	/
PLC Splitter (Pcs)	2*(1*8) or 1*(1*16) plug-in splitter
IP code	IP65
Packing Information	G.W.:15.5Kg QTY:10Pcs MEAS.:550*335*670mm



FTTH TERMINATION BOX

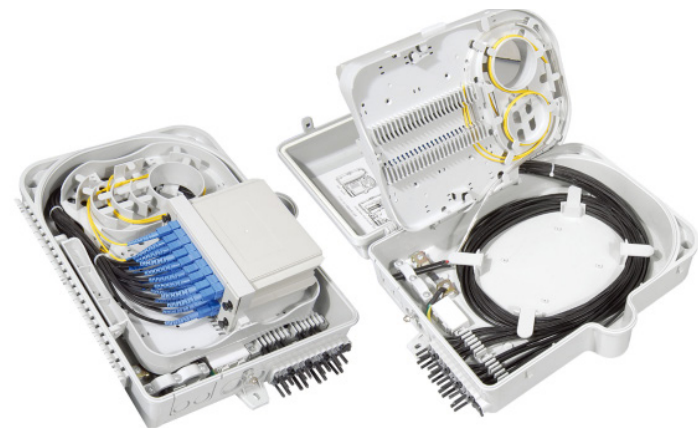
FAB-HGT-16C



Main features

- Total enclosed structure.
- Material: PC+ABS.
- Wet-proof, water-proof, dust-proof, anti-aging.
- Protection level up to IP65.
- Cable, pigtails, patch cords are running through own path without disturbing each other.
- Distribution panel can be flipped up, feeder cable can be placed by expression port.
- Wall-mounted or poled-mounted, suitable for both indoor and outdoor uses.

Specifications	
Material	PC+ABS/ABS
L*W*H (mm)	330*275*101
Max Splicing Capacity (core)	48
Max Input (mm)	Ø15
Max Output (mm)	2*3
Max Adapter (Pcs)	/
PLC Splitter (Pcs)	2*(1*8) or 1*(1*16) plug-in splitter
IP code	IP65
Packing Information	G.W.:18Kg QTY:10Pcs MEAS.:600*360*630mm



FTTH TERMINATION BOX
FAB-HGT-16D



Main features

- Advanced structure design, easy operation and reasonable routing.
- Material: PC+ABS.
- Moisture proof, wsterproof, dust-proof, anti-aging.
- Protection level up to IP65.
- 1 oval optical cable entry, 16 pcs of household.
- Installation method: pole-mounted, wall-mounted, aerial-mounted.

www.fibramerica.com

Specifications	
Material	PC+ABS/ABS
L*W*H (mm)	306*253*92
Max Splicing Capacity (core)	26
Max Input (mm)	2*(Ø15)
Max Output (mm)	2*3~Ø5
Max Adapter (Pcs)	16
PLC Splitter (Pcs)	1*16 or 1*8*2
IP code	IP65
Packing Information	G.W.:14.1Kg QTY:10Pcs MEAS.:560*350*570mm



FTTH TERMINATION BOX

FAB-HGT-16DG



Main features

- Advanced structure design, easy operation and reasonable routing.
- Material: PC+ABS.
- Moisture proof, waterproof, dust-proof, anti-aging.
- Protection level up to IP65.
- 1 oval optical cable entry meet the straight-through function without cutting the fiber.
- Installation method: pole-mounted, aerial-mounted, wall-mounted.

Specifications	
Material	PC+ABS/PP
L*W*H (mm)	260*214*81
Max Splicing Capacity (core)	24
Max Input (mm)	18
Max Output (mm)	2*3
Max Adapter (Pcs)	16
PLC Splitter (Pcs)	2*(PLC 1x8) or 1*(PLC 1x16)
IP code	IP65
Packing Information	G.W.:13Kg QTY:10Pcs MEAS.:460*290*570mm



FTTH TERMINATION BOX

FAB-HGT-16F-1



Main features

- Advanced structure design, easy operation and reasonable routing.
- Material: PP+GF.
- Moisture proof, waterproof, dust-proof, anti-aging.
- Protection level up to IP68.
- 1 oval optical cable entry, 2 branch optical cable entries and 16 pcs of household.
- Installation method: pole-mounted, aerial-mounted, wall-mounted.

www.fibramerica.com

Specifications	
Material	PP+GF
L*W*H (mm)	389*242*128
Max Splicing Capacity (core)	96
Max Input (mm)	Ø8~18
Max Output (mm)	2*3~7
Max Adapter (Pcs)	16
PLC Splitter (Pcs)	8*(1x8 PLC) or 4*(1x16 PLC)
IP code	IP68
Packing Information	G.W.:23Kg QTY:6Pcs MEAS.:530*425*470mm



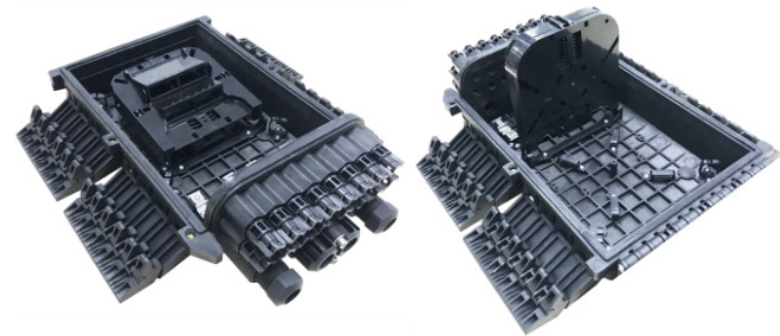
FTTH TERMINATION BOX

FAB-HGT-16F-2

Main features

- Advanced structure design, easy operation and reasonable routing.
- Material: PP+GF.
- Moisture proof, waterproof, dust-proof, anti-aging.
- Protection level up to IP68.
- 1 oval optical cable entry, 2 branch optical cable entries and 16 pcs of household.
- Installation method: pole-mounted, aerial-mounted, wall-mounted. Suitable for both indoor and outdoor uses.

Specifications	
Material	PP+GF
L*W*H (mm)	388*242*128
Max Splicing Capacity (core)	16
Max Input (mm)	Ø8~18
Max Output (mm)	2*3~7
Max Adapter (Pcs)	16
PLC Splitter (Pcs)	8*(1x8 PLC) or 2*(1x16 PLC)
IP code	IP68
Packing Information	G.W.:23Kg QTY:6Pcs MEAS.:530*425*470mm



FTTH TERMINATION BOX
FAB-HGT-16F-3

Main features

- Advanced structure design, easy operation and reasonable routing.
- Material: PP+GF.
- Moisture proof, waterproof, dust-proof, anti-aging.
- Protection level up to IP68.
- 1 oval optical cable entry, 2 branch optical cable entries and 16 pcs of household.
- Installation method: pole-mounted, aerial-mounted, wall-mounted.

www.fibramerica.com

Specifications	
Material	PP+GF
L*W*H (mm)	388*242*128
Max Splicing Capacity (core)	16
Max Input (mm)	Ø8~18
Max Output (mm)	2*3~Ø7
Max Adapter (Pcs)	/
PLC Splitter (Pcs)	2*(1x8) or 1*(1x16) plug-in splitter
IP code	IP68
Packing Information	G.W.:23Kg QTY:6Pcs MEAS.:530*425*470mm



FTTH TERMINATION BOX

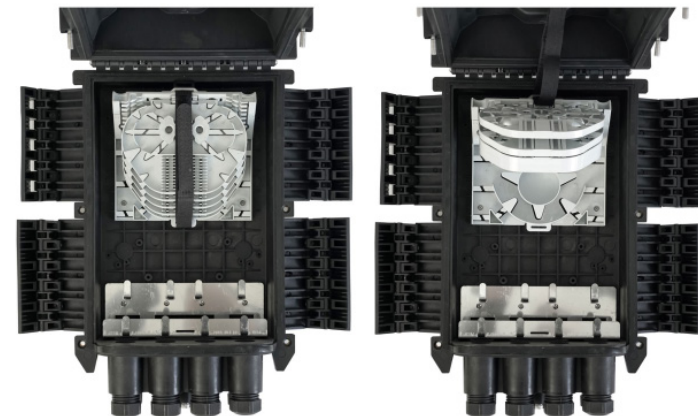
FAB-HGT-16F-4



Main features

- Advanced structure design, easy operation and reasonable routing.
- Material: PP+GF.
- Moisture proof, waterproof, dust-proof, anti-aging.
- Protection level up to IP68.
- 1 oval optical cable entry, 6 branch optical cable entries.
- Installation method: pole-mounted, aerial-mounted, wall-mounted.

Specifications	
Material	PP+GF
L*W*H (mm)	388*242*128
Max Splicing Capacity (core)	120
Max Input (mm)	Ø8~18
Max Output (mm)	2*3~Ø7
Max Adapter (Pcs)	/
PLC Splitter (Pcs)	1*8 PLC or 1*16 PLC
IP code	IP68
Packing Information	G.W.:23Kg QTY:6Pcs MEAS.:530*425*470mm



FTTH TERMINATION BOX

FAB-HGT-16F-5

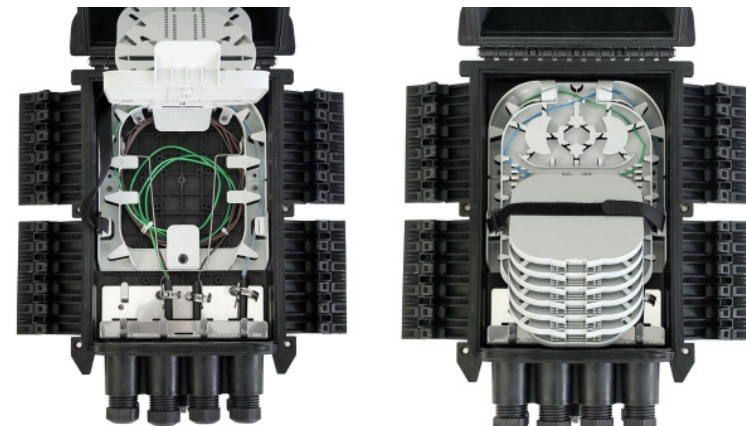


Main features

- Advanced structure design, easy operation and reasonable routing.
- Material: PP+GF.
- Moisture proof, waterproof, dust-proof, anti-aging.
- Protection level up to IP68.
- 1 oval optical cable entry, 6 branch optical cable entries.
- Installation method: pole-mounted, aerial-mounted, wall-mounted.

www.fibramerica.com

Specifications	
Material	PP+GF
L*W*H (mm)	388*242*128
Max Splicing Capacity (core)	192
Max Input (mm)	Ø8~Ø18
Max Output (mm)	2*3~Ø7
Max Adapter (Pcs)	/
PLC Splitter (Pcs)	1*8 PLC or 1*16 PLC
IP code	IP68
Packing Information	G.W.:23Kg QTY:6Pcs MEAS.:530*425*470mm



FTTH TERMINATION BOX

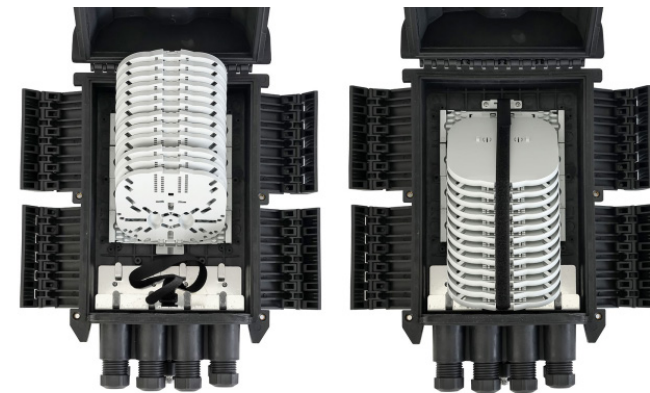
FAB-HGT-16F-6



Main features

- Advanced structure design, easy operation and reasonable routing.
- Material: PP+GF.
- Moisture proof, waterproof, dust-proof, anti-aging.
- Protection level up to IP68.
- 1 oval optical cable entry, 6 branch optical cable entries.
- Installation method: pole-mounted, aerial-mounted, wall-mounted.

Specifications	
Material	PP+GF
L*W*H (mm)	388*242*128
Max Splicing Capacity (core)	384
Max Input (mm)	Ø8~Ø18
Max Output (mm)	2*3~Ø7
Max Adapter (Pcs)	/
PLC Splitter (Pcs)	1*8 PLC or 1*16 PLC
IP code	IP68
Packing Information	G.W.:23Kg QTY:6Pcs MEAS.:530*425*470mm



FTTH TERMINATION BOX

FAB-HGT-JCD-16-I4

Main features

- Dis-mountable adaptor panel
- Support midspan termination
- Easy operation and installation
- Rotatable and dis-mountable splice tray for easy splicing

www.fibramerica.com

Specifications	
Material	Modified polymer plastic
L*W*H (mm)	410*240*130mm
Max Splicing Capacity (core)	48 fibers (4 trays, 12 fibers/tray)
Cable Ports	1 oval uncut port (10~17.5mm) 2 round port (8~17.5mm)
Applicable Cable Diameter	2*3mm FTTH Drop Cable, or 7mm round cable
Max Adapter (Pcs)	16pcs
Sealing	IP68
Impact Test	IK10
Packing Information	540*410*375mm (4pcs per carton)



FTTH TERMINATION BOX

FAB-HGT-JCD-16-14-ECY



Main features

- Dis-mountable adaptor panel
- Support midspan termination
- Easy operation and installation
- Rotatable and dis-mountable splice tray for easy splicing

Specifications	
Material	PP+Glass Fiber
L*W*H (mm)	380*243*130mm
Max Splicing Capacity (core)	48 fibers (4 trays, 12 fibers/tray)
Cable Ports	1 oval uncut port (10~17.5mm) 2 round port (8~17.5mm)
Applicable Cable Diameter	2*3mm FTTH Drop Cable, or 7mm round cable
Max Adapter (Pcs)	16pcs
Sealing	IP68
Impact Test	IK10
Packing Information	515*425*340mm (4pcs per carton)



FTTH TERMINATION BOX

FAB-HGT-16G-3

Main features

- Advanced structure design, easy operation and reasonable routing.
- Material: PP+GF.
- Moisture proof, waterproof, dust-proof, anti-aging.
- Protection level up to IP65.
- There are many kinds of cable inlets.
- Installation method: pole-mounted, aerial-mounted, wall-mounted.

www.fibramerica.com

Specifications	
Material	PP+GF
L*W*H (mm)	321*230*104
Max Splicing Capacity (core)	16
Max Input (mm)	Ø8~Ø12
Max Output (mm)	2*3~Ø5
Max Adapter (Pcs)	16
PLC Splitter (Pcs)	1/8*2
IP code	IP65
Packing Information	G.W.:25Kg QTY:10Pcs MEAS.:510*360*750mm



FTTH TERMINATION BOX

FAB-HGT-16G-4



Main features

- Advanced structure design, easy operation and reasonable routing.
- Material: PP+GF.
- Moisture proof, waterproof, dust-proof, anti-aging.
- Protection level up to IP65.
- There are many kinds of cable inlets.
- Installation method: pole-mounted, aerial-mounted, wall-mounted.

Specifications	
Material	PP+GF
L*W*H (mm)	321*230*104
Max Splicing Capacity (core)	24
Max Input (mm)	Ø8~Ø12
Max Output (mm)	2*3~Ø5
Max Adapter (Pcs)	16
PLC Splitter (Pcs)	1/8*2
IP code	IP65
Packing Information	G.W.:25Kg QTY:10Pcs MEAS.:510*360*750mm



FTTH TERMINATION BOX

FAB-HGT-16G-5

Main features

- Advanced structure design, easy operation and reasonable routing.
- Material: PP+GF.
- Moisture proof, waterproof, dust-proof, anti-aging.
- Protection level up to IP65.
- There are many kinds of cable inlets.
- Installation method: pole-mounted, aerial-mounted, wall-mounted.

www.fibramerica.com

Specifications	
Material	PP+GF
L*W*H (mm)	321*230*104
Max Splicing Capacity (core)	32
Max Input (mm)	Ø8~Ø12
Max Output (mm)	2*3~Ø5
Max Adapter (Pcs)	/
PLC Splitter (Pcs)	2*(1*8) or 1*(1*16) plug-in splitter
IP code	IP65
Packing Information	G.W.:25Kg QTY:10Pcs MEAS.:510*360*750mm



FTTH TERMINATION BOX

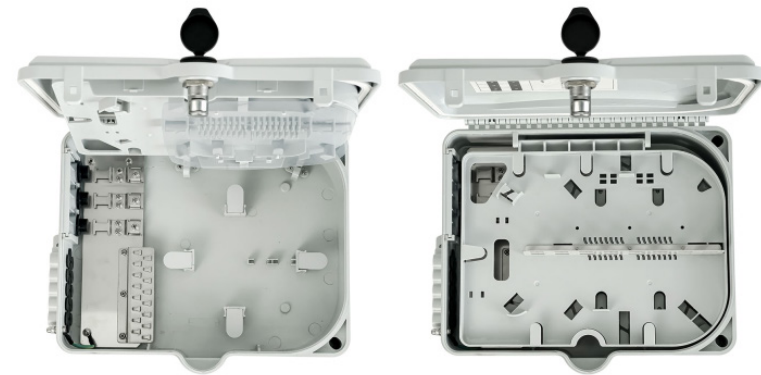
FAB-HGT-16H-2



Main features

- Advanced structure design, easy operation and reasonable routing.
- Material: PC+ABS.
- Moisture proof, waterproof, dust-proof, anti-aging.
- Protection level up to IP65.
- Cable, pigtails, patch cords are running through own path without disturbing each other.
- Installation method: pole-mounted, aerial-mounted, wall-mounted.

Specifications	
Material	PC+ABS/ABS
L*W*H (mm)	294*251*85
Max Splicing Capacity (core)	16
Max Input (mm)	10
Max Output (mm)	2*3~Ø5
Max Adapter (Pcs)	16
PLC Splitter (Pcs)	2*(1*8 PLC) or 2*(1*16 PLC)
IP code	IP65
Packing Information	G.W.:16Kg QTY:10Pcs MEAS.:560*340*600mm



FTTH TERMINATION BOX

FAB-HGT-16IN

Main features

- Water-proof design with IP65 Protection level
- Integrated with capability of micro and cassette type of splitters and cable management system
- Manage fibers in a reasonable fiber radius condition.
- Fiber bend radius control more than 40mm
- Suitable for the fusion splice or mechanical splice
- Capacity of drop fiber up to 16 ports
- 1x8, 1x16 PLC Splitter and accessories can be pre-installed as required

www.fibramerica.com

Specifications	
Material	PP + GF
L*W*H (mm)	290 x 185 x 108
Weight	1.5kg
Applicable Environment	Indoor and outdoor
Installation Type	Wall mount, Hang-on-Cable or Pole mount (optional*)
Inlet Ports	Port 1: 6 ~ 9mm Port 2: 9 ~ 12mm Port 3: 12 ~ 15mm 6 ports in total (3 ports on each side of the box)
Outlet Ports	16 ports in total



FAB-HGT-16IN-A



FAB-HGT-16IN-L



FAB-HGT-16IN-S

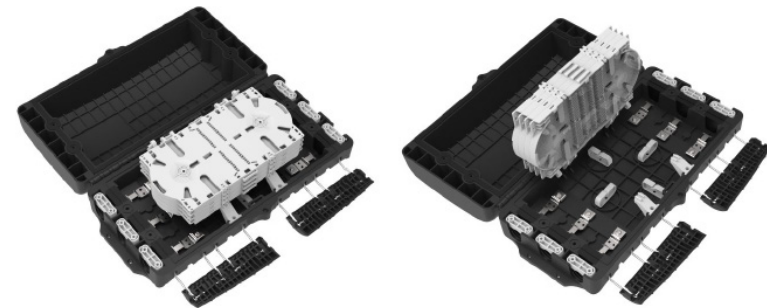
FTTH TERMINATION BOX
FAB-HGT-16J



Main features

- Advanced structure design, easy operation and reasonable routing.
- Material: PP .
- Moisture proof, waterproof, dust-proof, anti-aging.
- Protection level up to IP65.
- 6 cable entry
- Installation method: pole-mounted, aerial-mounted, wall-mounted.

Specifications	
Material	PC+ABS / PP
L*W*H (mm)	383*205*105
Max Splicing Capacity (core)	192
Into the largest cable diameter (mm)	Ø12
Cable outlet size(mm)	Ø12
Number of optical cable holes	6 cable entry
IP code	IP65
Packing Information	G.W.:27Kg QTY:10Pcs MEAS: 440*410*605mm



FTTH TERMINATION BOX

FAB-HGT-16J-1

Main features

- Advanced structure design, easy operation and reasonable routing.
- Material: PP .
- Moisture proof, waterproof, dust-proof, anti-aging.
- Protection level up to IP65.
- 6 cable entry
- Installation method: pole-mounted, aerial-mounted, wall-mounted.

www.fibramerica.com

Specifications	
Material	PC+ABS / PP
L*W*H (mm)	383*205*120
Max Splicing Capacity (core)	48
Into the largest cable diameter (mm)	Ø12
Plug in optical splitter	2pcs. 1x2; 1x4; 1x8; 1x16
Cable outlet size(mm)	2*3~Ø7
Number of optical cable holes	6 cable entry
IP code	IP65
Packing Information	G.W.:27Kg QTY:10Pcs MEAS: 440*410*605mm



FTTH TERMINATION BOX

FAB-HGT-16KR-A



Main features

- Water-proof design with IP65 Protection grade.
- Integrated with splice cassette and cable management system.
- Manage fibers in a reasonable fiber radius condition.
- Fiber bend radius control more than 35mm.
- 1 uncut cable port for feeder cables.
- Fixed hermetic seals in all its grooves
- The entire fiber route protected by transport tube
- Complete opening of the hinges with stop included
- Protected and organized pigtail space
- Support customized services such as logo screen printing.

Specifications	
Material	PC+ABS/ABS
L*W*H (mm)	304×185×115
Color	Black/White/Gray(Customizable)
Splice Capacity	36 Cores
Splitter Capacity	2 Sets
Splitter Type	SC, Mini Type, 1:2 / 1:4 / 1:8
Adaptor Capacity	18pcs.
Incoming Cable Port	2x(Ø10~14mm), 1x Mid-span Ø10~14mm
Installation Method	Wall, Pole Mounted



FTTH TERMINATION BOX
FAB-HGT-16L

Main features

- Total enclosed structure.
- Material: PC+ABS.
- Wet-proof, water-proof, dust-proof, anti-aging.
- Protection level up to IP65.
- Cable, pigtails, patch cords are running through own path without disturbing each other.
- Wall-mounted or poled-mounted, suitable for both indoor and outdoor uses.

www.fibramerica.com

Specifications	
Material	PC+ABS/ABS
L*W*H (mm)	303*251*85
Max Splicing Capacity (core)	52
Max Input (mm)	10
Max Output (mm)	2*3~Ø5
Max Adapter (Pcs)	/
PLC Splitter (Pcs)	2*(1*8) or 1*(1*16) plug-in splitter
IP code	IP65
Packing Information	G.W.:17.5Kg QTY:8Pcs MEAS.:650*360*600mm



FTTH TERMINATION BOX

FAB-HGT-16LW

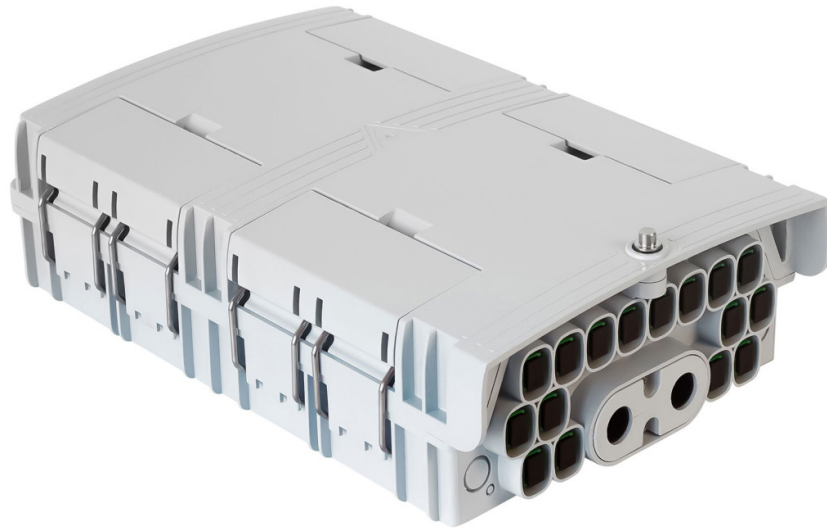
Main features

- The box casing is made of industrial plastic PC+ABS material. Outdoor application and good UV resistant.
- Maximum 96F splice capacity, stainless anti-rust bolts and nuts. Easy for maintenance and expansion.
- Fiber bend radius control more than 35mm.
- 180-degree access with 2pcs of buckled lock structure.
- Designated position for the placement of 2pcs of 1:8 splitter. Protection level: IP65.
- 1 mid- span cable entrance(10-16.5mm) for uncut cable and 2 reserved cable entrances for distribution cable gland(8-13.5mm).

Specifications	
Material	PC+ABS/ABS
L*W*H (mm)	290*210*82mm
PLC	1pc 1x16 steel tube or 1pc 1x16LGX PLC Splitter
Adapter	16pcs SC/UPC SC/APC Adapters
Inlet cable size	12-15mm
Inlet	1 uncut cable port and 2 cable glands
Outlet	16 for outlet



FTTH TERMINATION BOX
FAB-HGT-16M



Main features

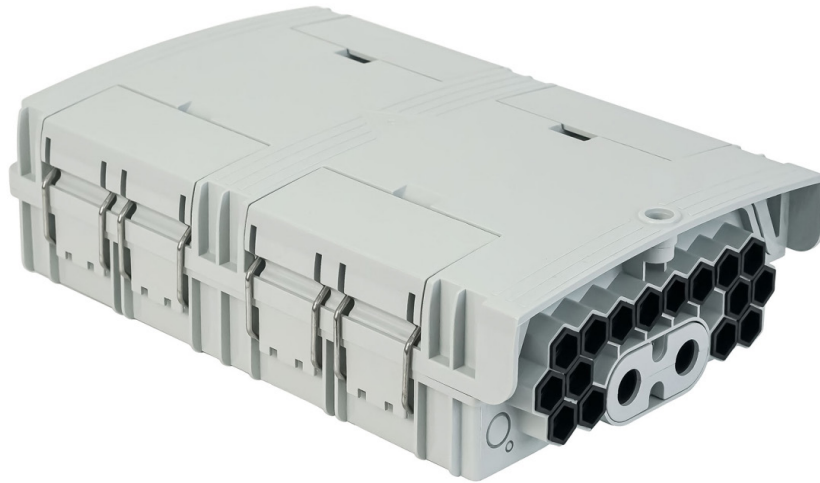
- Advanced structure design, easy operation and reasonable routing.
- Material: PC+ABS.
- Moisture proof, waterproof, dust-proof, anti-aging.
- Protection level up to IP65.
- Cable, pigtails, patch cords are running through own path without disturbing each other.
- Installation method: pole-mounted, aerial-mounted, wall-mounted.

www.fibramerica.com

Specifications	
Material	PC+ABS/ABS
L*W*H (mm)	344*210*89
Max Splicing Capacity (core)	72
Max Input (mm)	15
Max Output (mm)	/
Max Adapter (Pcs)	16
PLC Splitter (Pcs)	6*(1*8 PLC)
IP code	IP65
Packing Information	G.W.:20.3Kg QTY:10Pcs MEAS.:490*375*545mm



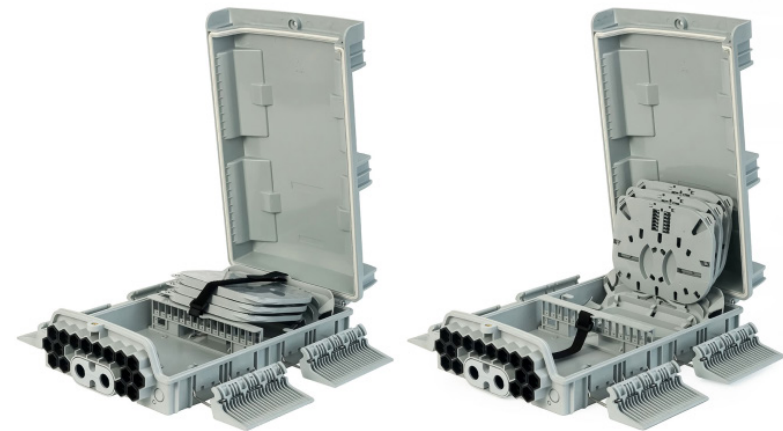
FTTH TERMINATION BOX
FAB-HGT-16N



Main features

- Advanced structure design, easy operation and reasonable routing.
- Material: PC+ABS.
- Moisture proof, waterproof, dust-proof, anti-aging.
- Protection level up to IP65.
- 1 oval optical entry, 16 pcs of household.
- Installation method: pole-mounted, aerial-mounted, wall-mounted.

Specifications	
Material	PC+ABS/ABS
L*W*H (mm)	344*210*89
Max Splicing Capacity (core)	36
Max Input (mm)	15
Max Output (mm)	2*3
Max Adapter (Pcs)	16
PLC Splitter (Pcs)	3*(1*8 PLC)
IP code	IP65
Packing Information	G.W.:18.3Kg QTY:10Pcs MEAS.:490*375*545mm



FTTH TERMINATION BOX
FAB-HGT-16P

Main features

- Advanced structure design, easy operation and reasonable routing.
- Material: PC+ABS.
- Moisture proof, waterproof, dust-proof, anti-aging.
- Protection level up to IP65.
- 1 oval optical cable entry, 2 branch optical cable entries and 16 pcs of household.
- Installation method: pole-mounted, aerial-mounted, wall-mounted.

www.fibramerica.com

Specifications	
Material	PC+ABS/ABS
L*W*H (mm)	290*175*83
Max Splicing Capacity (core)	16
Max Input (mm)	15
Max Output (mm)	2*3~5
Max Adapter (Pcs)	/
PLC Splitter (Pcs)	2*(1*8) or 1*(1*16) plug-in splitter
IP code	IP65
Packing Information	G.W.:13Kg QTY:10Pcs MEAS.:410*320*570mm



FTTH TERMINATION BOX

FAB-HGT-16PM/24PM



Main features

- The cable entry uses cable gland to provide protection at the bottom.
- 16/24 cores fiber termination capacity
- Support wall, pole mount.
- Protection Grade: IP65
- All the metallic components, parts and accessories are protected against corrosion and various forms of localized corrosion.

Specifications	
Size	306×237×116 mm
Material	PC+ABS
Color	Black /Gray
Splice Capacity	24 Cores
Minimum fiber bending	> 30mm
Adapter Type	SC
Adaptor Capacity	16/24 Pcs
Installation Method	Wall / Pole-mounted
IP	IP65



FTTH TERMINATION BOX

PROBOX68-16A

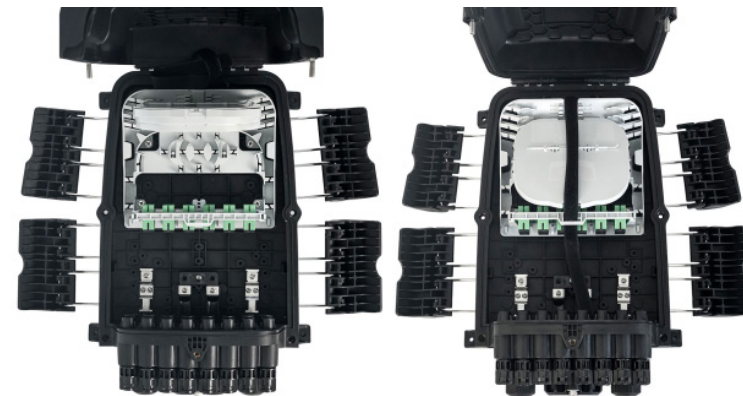


Main features

- Advanced structure design, easy operation and reasonable routing.
- Material: PP.
- Moisture proof, waterproof, dust-proof, anti-aging.
- Protection level up to IP68.
- 1 oval optical cable entry, 2 branch optical cable entries and 16 pcs of household.
- Installation method: pole-mounted, aerial-mounted, wall-mounted.

www.fibramerica.com

Specifications	
Material	PP+GF
L*W*H (mm)	378*255*116
Max Splicing Capacity (core)	136
Max Input (mm)	Ø18
Max Output (mm)	2*3~Ø7
Max Adapter (Pcs)	16
PLC Splitter (Pcs)	1*8 PLC or 1*16 PLC
IP code	IP68
Packing Information	G.W.:25Kg QTY:8Pcs MEAS.:540*405*540mm



FTTH TERMINATION BOX

PROBOX68-16B



Main features

- Advanced structure design, easy operation and reasonable routing.
- Material: PP.
- Moisture proof, waterproof, dust-proof, anti-aging.
- Protection level up to IP68.
- 1 oval optical cable entry, 2 branch optical cable entries and 16 pcs of household.
- Installation method: pole-mounted, aerial-mounted, wall-mounted.

Specifications	
Material	PP+GF
L*W*H (mm)	378*255*116
Max Splicing Capacity (core)	16
Max Input (mm)	Ø18
Max Output (mm)	2*3~Ø7
Max Adapter (Pcs)	16
PLC Splitter (Pcs)	2*(1*8 PLC)
IP code	IP68
Packing Information	G.W.:25Kg QTY:8Pcs MEAS.:540*405*540mm



FTTH TERMINATION BOX

PROBOX68-16C



Main features

- Advanced structure design, easy operation and reasonable routing.
- Material: PP.
- Moisture proof, waterproof, dust-proof, anti-aging.
- Protection level up to IP68.
- 1 oval optical cable entry, 2 branch optical cable entries and 16 pcs of household.
- Installation method: pole-mounted, aerial-mounted, wall-mounted.

www.fibramerica.com

Specifications	
Material	PP+GF
L*W*H (mm)	378*255*116
Max Splicing Capacity (core)	16
Max Input (mm)	Ø18
Max Output (mm)	2*3~Ø7
Max Adapter (Pcs)	/
PLC Splitter (Pcs)	2*(1*8) or 1*(1*16) plug-in splitter
IP code	IP68
Packing Information	G.W.:25Kg QTY:8Pcs MEAS.:540*405*540mm



FTTH TERMINATION BOX

PROBOX68-16D



Main features

- Advanced structure design, easy operation and reasonable routing.
- Material: PP.
- Moisture proof, waterproof, dust-proof, anti-aging.
- Protection level up to IP68.
- 1 oval optical cable entry, 2 branch optical cable entries and 16 pcs of household.
- Installation method: pole-mounted, aerial-mounted, wall-mounted.

Specifications	
Material	PP+GF
L*W*H (mm)	378*255*116
Max Splicing Capacity (core)	200
Max Input (mm)	Ø18
Max Output (mm)	2*3~Ø7
Max Adapter (Pcs)	/
PLC Splitter (Pcs)	1*8 PLC / 1*16 PLC
IP code	IP68
Packing Information	G.W.:25Kg QTY:8Pcs MEAS.:540*405*540mm



FTTH TERMINATION BOX

PROBOX68-16E

Main features

- Advanced structure design, easy operation and reasonable routing.
- Material: PP.
- Moisture proof, waterproof, dust-proof, anti-aging.
- Protection level up to IP68.
- 1 oval optical cable entry, 2 branch optical cable entries and 16 pcs of household.
- Installation method: pole-mounted, aerial-mounted, wall-mounted.

www.fibramerica.com

Specifications	
Material	PP+GF
L*W*H (mm)	378*255*116
Max Splicing Capacity (core)	200
Max Input (mm)	Ø18
Max Output (mm)	2*3~Ø7
Max Adapter (Pcs)	/
PLC Splitter (Pcs)	1*8 PLC / 1*16 PLC
IP code	IP68
Packing Information	G.W.:25Kg QTY:8Pcs MEAS.:540*405*540mm



FTTH TERMINATION BOX

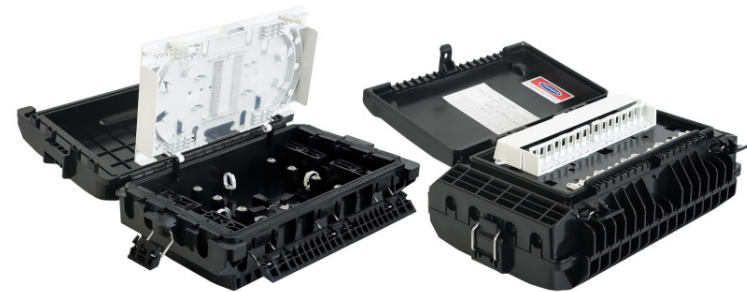
FAB-HGT-16T



Main features

- Advanced structure design, easy operation and reasonable routing.
- Material: PP or PC+ABS.
- Moisture proof, waterproof, dust-proof, anti-aging.
- Protection level up to IP65.
- 8 cable entries, 16 pcs of household.
- Installation method: aerial-mounted.

Specifications	
Material	PC+ABS/ABS
L*W*H (mm)	347*205*122
Max Splicing Capacity (core)	25
Max Input (mm)	2*3
Max Output (mm)	2*3
Max Adapter (Pcs)	16
PLC Splitter (Pcs)	1*8 PLC
IP code	IP65
Packing Information	G.W.:23Kg QTY:10Pcs MEAS.:450*390*690mm



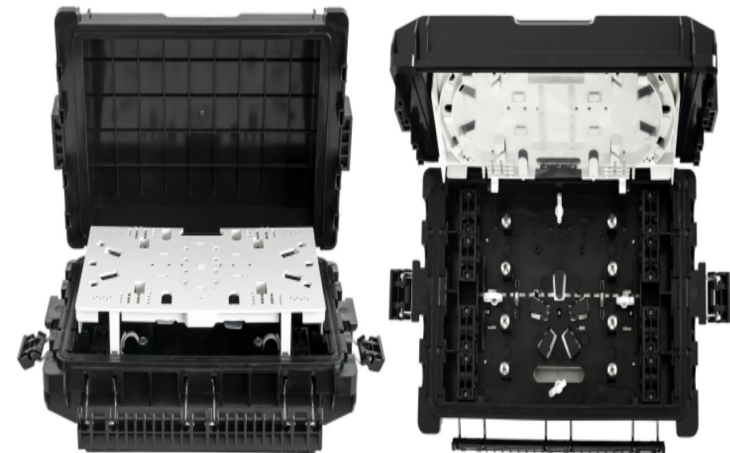
FTTH TERMINATION BOX
FAB-HGT-16T-1

Main features

- Advanced structure design, easy operation and reasonable routing.
- Material: PC+ABS.
- Moisture proof, waterproof, dust-proof, anti-aging.
- Protection level up to IP65.
- 8 cable entries, 16 pcs of household.
- Installation method: aerial-mounted.

www.fibramerica.com

Specifications	
Material	PC+ABS/ABS
L*W*H (mm)	347*205*122
Max Splicing Capacity (core)	33
Max Input (mm)	12
Max Output (mm)	2*3
Max Adapter (Pcs)	/
PLC Splitter (Pcs)	1*8 Cassete Type PLC Splitter (without connector): 1 pcs
IP code	IP65
Packing Information	G.W.:23Kg QTY:10Pcs MEAS.:450*390*690mm



FTTH TERMINATION BOX

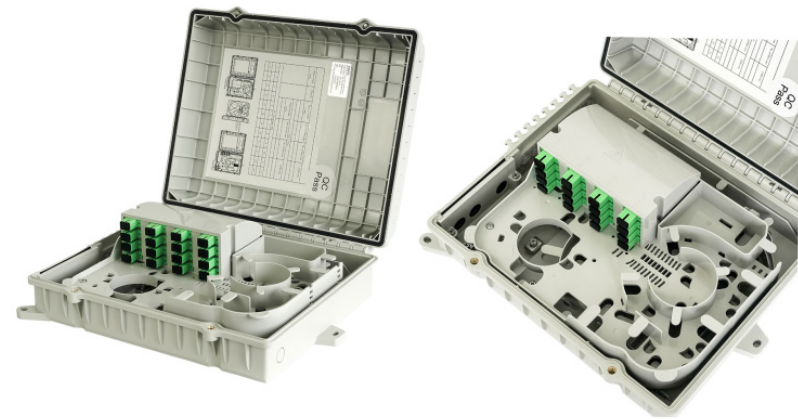
FAB-HGT-16U-1E



Main features

- Advanced structure design, easy operation and reasonable routing.
- Material: PC+ABS.
- Moisture proof, waterproof, dust-proof, anti-aging.
- Protection level up to IP65.
- 3 cable entries, 16 drop cable ports.
- Installation method: pole-mounted, wall-mounted.

Specifications	
Material	PC+ABS/ABS
L*W*H (mm)	326*259*106
Max Splicing Capacity (core)	40
Max Input (mm)	15
Max Output (mm)	2*3~7
Max Adapter (Pcs)	16
PLC Splitter (Pcs)	2*(1*8 PLC) or 1*(1*16 PLC)
IP code	IP65
Packing Information	G.W.:26Kg QTY:10Pcs MEAS.:570*360*560mm



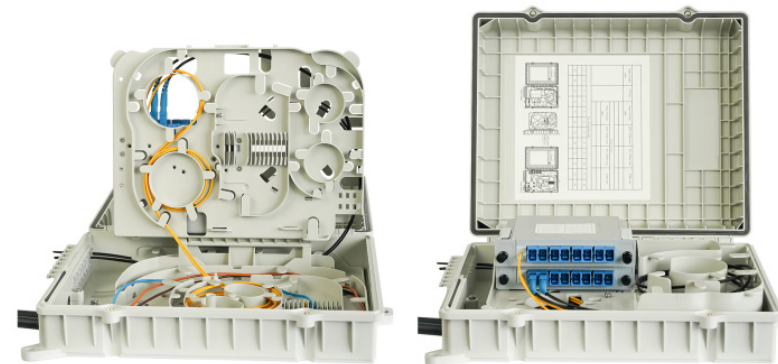
FTTH TERMINATION BOX
FAB-HGT-16U-2

Main features

- Advanced structure design, easy operation and reasonable routing.
- Material: PC+ABS.
- Moisture proof, waterproof, dust-proof, anti-aging.
- Protection level up to IP65.
- 3 cable entries, 16 drop cable ports.
- Installation method: pole-mounted, wall-mounted.

www.fibramerica.com

Specifications	
Material	PC+ABS/ABS
L*W*H (mm)	326*259*106
Max Splicing Capacity (core)	40
Max Input (mm)	15
Max Output (mm)	Ø8~Ø15.5
Max Adapter (Pcs)	/
PLC Splitter (Pcs)	2*(1*8) or 1*(1*16) plug-in splitter
IP code	IP65
Packing Information	G.W.:26Kg QTY:10Pcs MEAS.:570*360*560mm



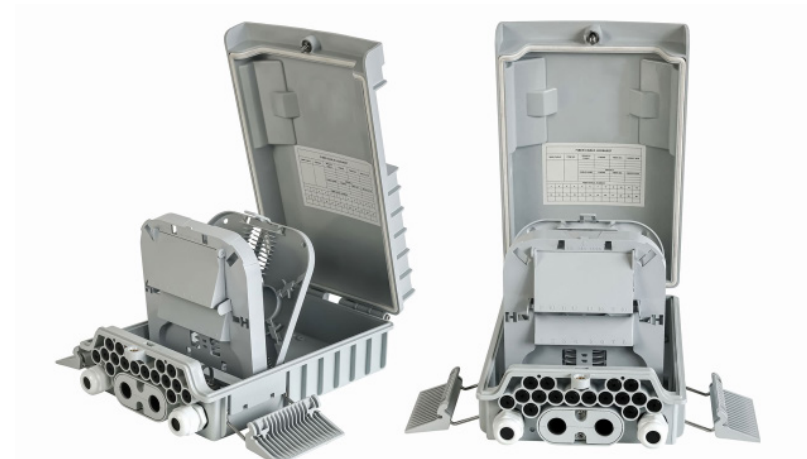
FTTH TERMINATION BOX

FAB-HGT-16W

Main features

- Advanced structure design, easy operation and reasonable routing.
- Material: PC+ABS.
- Moisture proof, waterproof, dust-proof, anti-aging.
- Protection level up to IP65.
- 1 oval optical cable entry, 2 branch optical cable entries and 16 pcs of household.
- Installation method: pole-mounted, wall-mounted, aerial-mounted.

Specifications	
Material	PC+ABS
L*W*H (mm)	291*175*83
Max Splicing Capacity (core)	16
Max Input (mm)	15
Max Output (mm)	2*3~5
Max Adapter (Pcs)	16
PLC Splitter (Pcs)	2(1*8 PLC)
IP code	IP65
Packing Information	G.W.:12Kg QTY:10Pcs MEAS.:410*320*570mm



FTTH TERMINATION BOX

FAB-HGT-16W-1

Main features

- Advanced structure design, easy operation and reasonable routing.
- Material: PC+ABS.
- Moisture proof, waterproof, dust-proof, anti-aging.
- Protection level up to IP65.
- 1 oval optical cable entry, 2 branch optical cable entries and 16 pcs of household.
- Installation method: pole-mounted, wall-mounted, aerial-mounted.

www.fibramerica.com

Specifications	
Material	PC+ABS
L*W*H (mm)	290*175*93
Max Splicing Capacity (core)	16
Max Input (mm)	15
Max Output (mm)	2*3
Max Adapter (Pcs)	16
PLC Splitter (Pcs)	2(1*8 PLC)
IP code	IP65
Packing Information	G.W.:12Kg QTY:10Pcs MEAS.:410*320*570mm



FTTH TERMINATION BOX
FAB-HGT-16W-2

Main features

- Advanced structure design, easy operation and reasonable routing.
- Material: PC+ABS.
- Moisture proof, waterproof, dust-proof, anti-aging.
- Protection level up to IP65.
- 1 oval optical cable entry, 2 branch optical cable entries and 16 pcs of household.
- Installation method: pole-mounted, wall-mounted, aerial-mounted.

Specifications	
Material	PC+ABS
L*W*H (mm)	290*175*83
Max Splicing Capacity (core)	16
Max Input (mm)	15
Max Output (mm)	2*3~5
Max Adapter (Pcs)	/
PLC Splitter (Pcs)	2*(1*8) or 1*(1*16) plug-in splitter
IP code	IP65
Packing Information	G.W.:12Kg QTY:10Pcs MEAS.:410*320*570mm



FTTH TERMINATION BOX

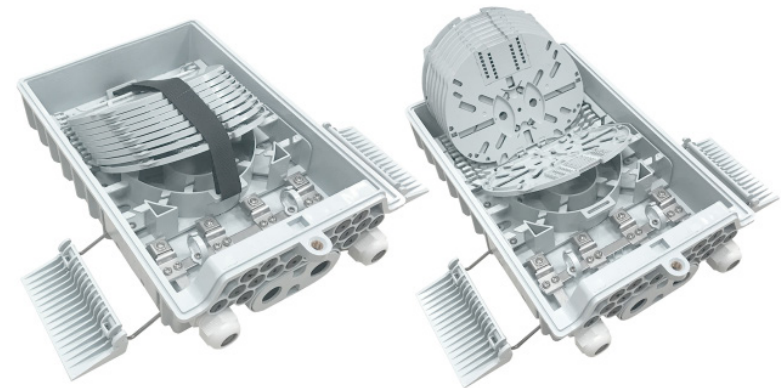
FAB-HGT-16W-3

Main features

- Advanced structure design, easy operation and reasonable routing.
- Material: PC+ABS.
- Moisture proof, waterproof, dust-proof, anti-aging.
- Protection level up to IP65.
- Port method 1: 1 oval optical cable entry, 2 branch optical cable entries and 16 pcs of household.
- Port method 2: 1 oval optical cable entry, 4 PG16 waterproof joints.
- Installation method: pole-mounted, wall-mounted, aerial-mounted.

www.fibramerica.com

Specifications	
Material	PC+ABS/ABS
L*W*H (mm)	291*175*83
Max Splicing Capacity (core)	152
Max Input (mm)	15
Max Output (mm)	14
Max Adapter (Pcs)	/
PLC Splitter (Pcs)	/
IP code	IP65
Packing Information	G.W.:12Kg QTY:10Pcs MEAS.:410*320*570mm



FTTH TERMINATION BOX

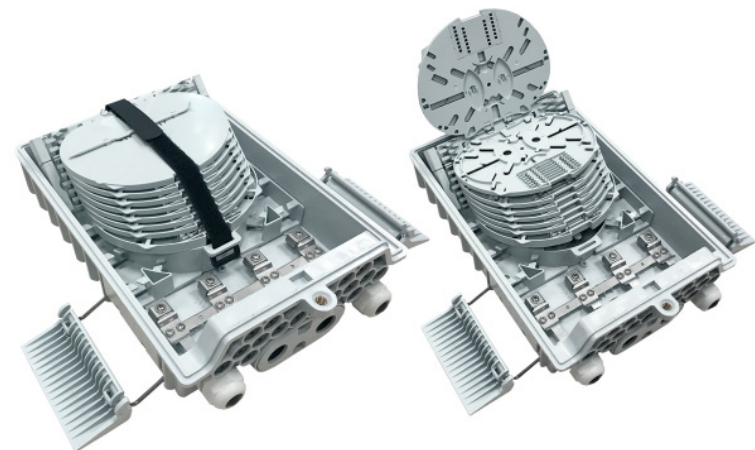
FAB-HGT-16W-4



Main features

- Advanced structure design, easy operation and reasonable routing.
- Material: PC+ABS.
- Moisture proof, waterproof, dust-proof, anti-aging.
- Protection level up to IP65.
- Port method 1: 1 oval optical cable entry, 2 branch optical cable entries and 16 pcs of household.
- Port method 2: 1 oval optical cable entry, 4 PG16 waterproof joints.
- Installation method: pole-mounted, wall-mounted, aerial-mounted.

Specifications	
Material	PC+ABS/ABS
L*W*H (mm)	291*175*83
Max Splicing Capacity (core)	152
Max Input (mm)	15
Max Output (mm)	14
Max Adapter (Pcs)	/
PLC Splitter (Pcs)	/
IP code	IP65
Packing Information	G.W.:12Kg QTY:10Pcs MEAS.:410*320*570mm



FTTH TERMINATION BOX

FAB-HGT-16X-3

Main features

- Total enclosed structure.
- Material: PC+ABS.
- Wet-proof, water-proof, dust-proof, anti-aging.
- Protection level up to IP65.
- Cable, pigtails, patch cords are running through own path without disturbing each other.
- Wall-mounted or poled-mounted, suitable for both indoor and outdoor uses.

www.fibramerica.com

Specifications	
Material	PC+ABS/ABS
L*W*H (mm)	393*198*98
Max Splicing Capacity (core)	18
Max Input (mm)	Ø7~15
Max Output (mm)	2*3~Ø5
Max Adapter (Pcs)	16
PLC Splitter (Pcs)	1/8*2 or 1/16*1
IP code	IP65
Packing Information	G.W.:22Kg QTY:10Pcs MEAS.:450*410*660mm



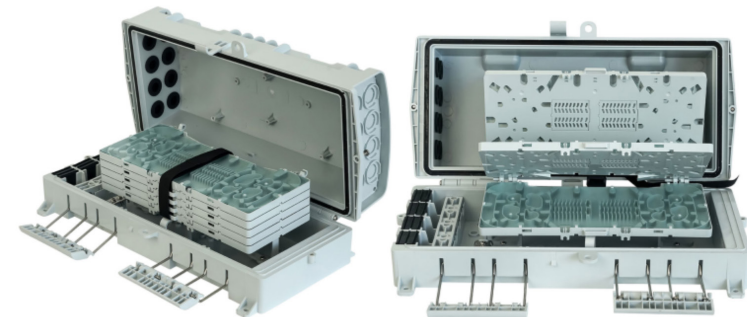
FTTH TERMINATION BOX

FAB-HGT-16X-8

Main features

- Total enclosed structure.
- Material: PC+ABS.
- Wet-proof, water-proof, dust-proof, anti-aging.
- Protection level up to IP65.
- Cable, pigtails, patch cords are running through own path without disturbing each other.
- Wall-mounted or poled-mounted, suitable for both indoor and outdoor uses.

Specifications	
Material	PC+ABS/ABS
L*W*H (mm)	393*198*121
Max Splicing Capacity (core)	32
Max Input (mm)	Ø15
Max Output (mm)	Ø10~15
Max Adapter (Pcs)	/
PLC Splitter (Pcs)	1*16*2
IP code	IP65
Packing Information	G.W.:23Kg QTY:10Pcs MEAS.:480*430*770mm



FTTH TERMINATION BOX

FAB-HGT-24A

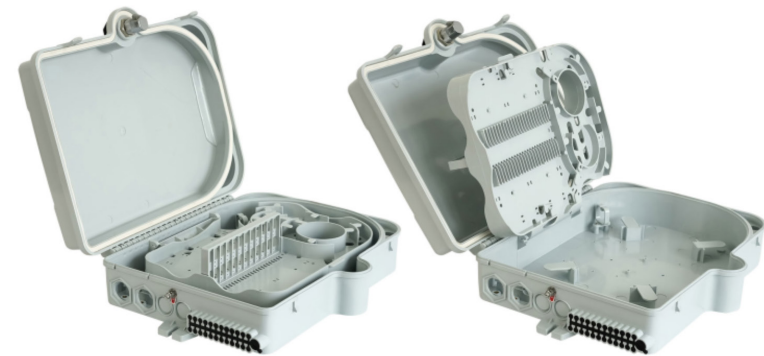


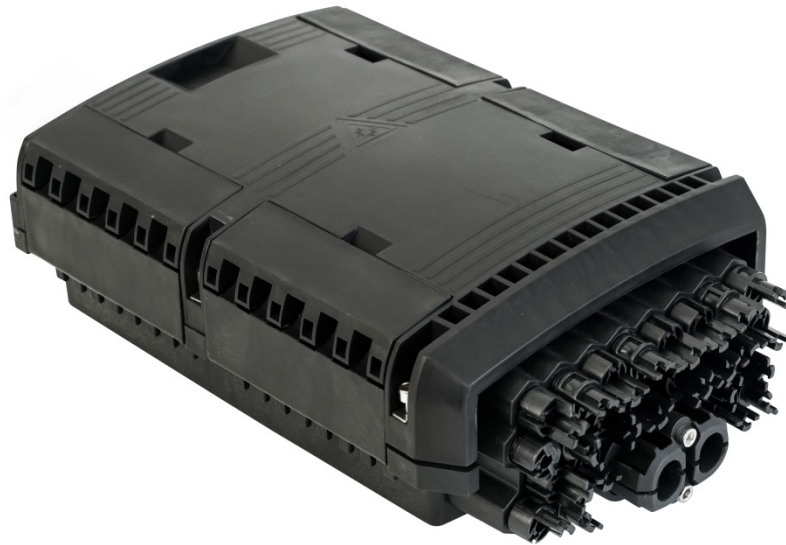
Main features

- Total enclosed structure.
- Material: PC+ABS.
- Wet-proof, water-proof, dust-proof, anti-aging.
- Protection level up to IP65.
- Cable, pigtails, patch cords are running through own path without disturbing each other.
- Wall-mounted or poled-mounted, suitable for both indoor and outdoor uses.

www.fibramerica.com

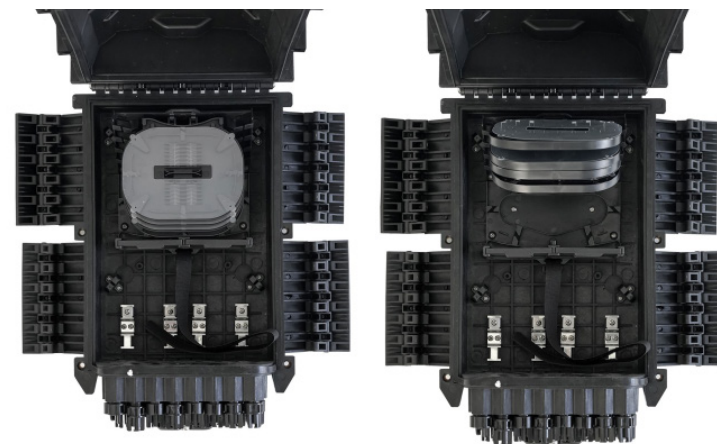
Specifications	
Material	PC+ABS/ABS
L*W*H (mm)	345*259*90
Max Splicing Capacity (core)	96
Max Input (mm)	18
Max Output (mm)	2*3~5
Max Adapter (Pcs)	18
PLC Splitter (Pcs)	4*(1*8PCL)
IP code	IP65
Packing Information	G.W.:18.5Kg QTY:10Pcs MEAS.:560*370*535mm



FTTH TERMINATION BOX
FAB-HGT-24C

Main features

- Total enclosed structure.
- Material: PP+GF.
- Wet-proof, water-proof, dust-proof, anti-aging.
- Protection level up to IP68.
- Cable, pigtails, patch cords are running through own path without disturbing each other.
- Wall-mounted or poled-mounted, suitable for both indoor and outdoor uses.

Specifications	
Material	PC+ABS/ABS
L*W*H (mm)	345*259*90
Max Splicing Capacity (core)	96
Max Input (mm)	18
Max Output (mm)	2*3~5
Max Adapter (Pcs)	18
PLC Splitter (Pcs)	4*(1*8 PLC)
IP code	IP65
Packing Information	G.W.:18.5Kg QTY:10Pcs MEAS.:560*370*535mm



FTTH TERMINATION BOX

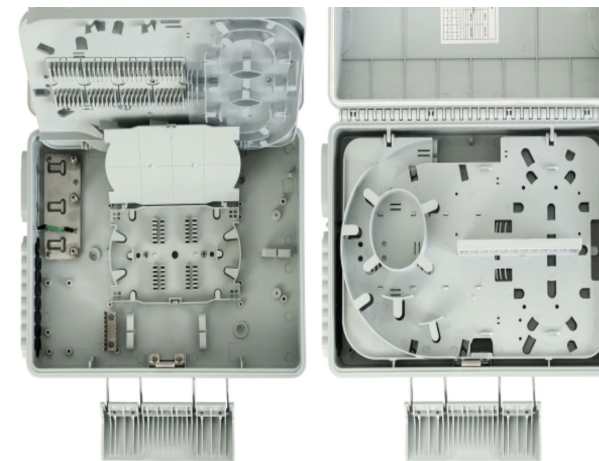
FAB-HGT-24E-1

Main features

- Total enclosed structure.
- Material: PP+GF.
- Wet-proof, water-proof, dust-proof, anti-aging.
- Protection level up to IP68.
- Cable, pigtails, patch cords are running through own path without disturbing each other.
- Wall-mounted or poled-mounted, suitable for both indoor and outdoor uses.

www.fibramerica.com

Specifications	
Material	PC+ABS/ABS
L*W*H (mm)	345*259*90
Max Splicing Capacity (core)	96
Max Input (mm)	18
Max Output (mm)	2*3~5
Max Adapter (Pcs)	18
PLC Splitter (Pcs)	4*(1*8 PLC)
IP code	IP65
Packing Information	G.W.:18.5Kg QTY:10Pcs MEAS.:560*370*535mm



FTTH TERMINATION BOX

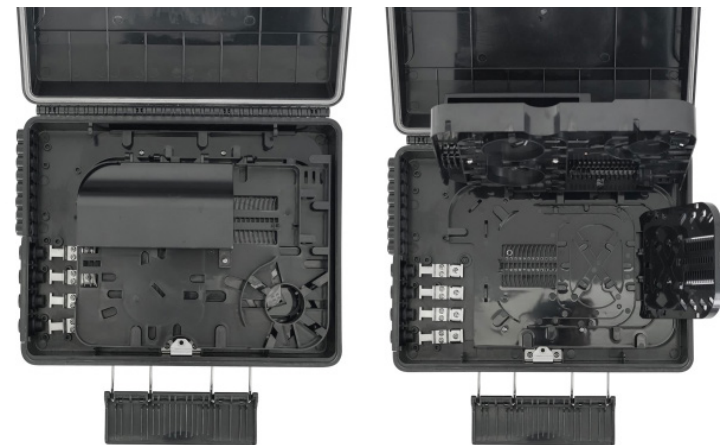
FAB-HGT-24E-4



Main features

- Total enclosed structure.
- Material: PP+GF.
- Wet-proof, water-proof, dust-proof, anti-aging.
- Protection level up to IP68.
- Cable, pigtails, patch cords are running through own path without disturbing each other.
- Wall-mounted or poled-mounted, suitable for both indoor and outdoor uses.

Specifications	
Material	PC+ABS/ABS
L*W*H (mm)	345*259*90
Max Splicing Capacity (core)	96
Max Input (mm)	18
Max Output (mm)	2*3~5
Max Adapter (Pcs)	18
PLC Splitter (Pcs)	4*(1*8 PLC)
IP code	IP65
Packing Information	G.W.:18.5Kg QTY:10Pcs MEAS.:560*370*535mm





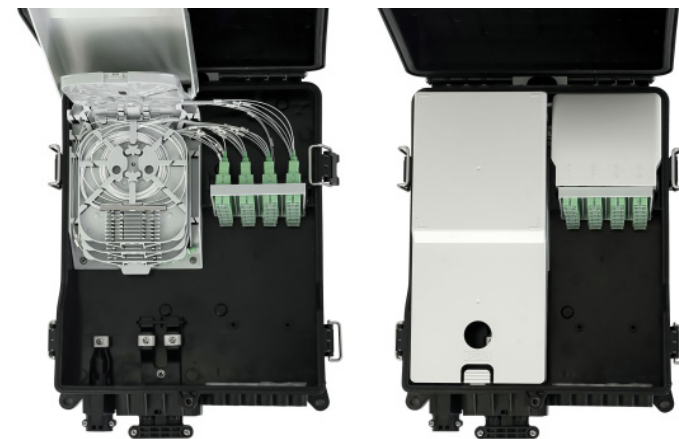
FTTH TERMINATION BOX

FAB-HGT-24G

Main features

- Total enclosed structure.
- Material: PC+ABS.
- Wet-proof, water-proof, dust-proof, anti-aging.
- Protection level up to IP65.
- Cable, pigtails, patch cords are running through own path without disturbing each other.
- Wall-mounted or poled-mounted, suitable for both indoor and outdoor uses.

Specifications	
Material	PC+ABS/ABS
L*W*H (mm)	345*259*90
Max Splicing Capacity (core)	96
Max Input (mm)	18
Max Output (mm)	2*3~5
Max Adapter (Pcs)	18
PLC Splitter (Pcs)	4*(1*8 PLC)
IP code	IP65
Packing Information	G.W.:18.5Kg QTY:10Pcs MEAS.:560*370*535mm



FTTH TERMINATION BOX

FAB-HGT-24H-1

Main features

- Total enclosed structure.
- Material: PC+ABS.
- Wet-proof, water-proof, dust-proof, anti-aging.
- Protection level up to IP65.
- Cable, pigtails, patch cords are running through own path without disturbing each other.
- Wall-mounted or poled-mounted, suitable for both indoor and outdoor uses.

www.fibramerica.com

Specifications	
Material	PC+ABS/PP
L*W*H (mm)	250*340*110
Max Splicing Capacity (core)	24
Max Input (mm)	14
Max Output (mm)	2*3~Ø6
Max Adapter (Pcs)	24
PLC Splitter (Pcs)	/
IP code	IP65
Packing Information	G.W.:19.6Kg QTY:10Pcs MEAS.:600*380*700mm



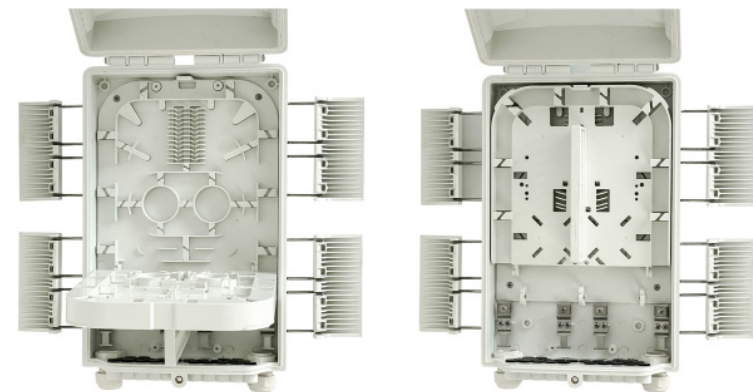
FTTH TERMINATION BOX

FAB-HGT-24N

Main features

- Total enclosed structure.
- Material: PC+ABS.
- Wet-proof, water-proof, dust-proof, anti-aging.
- Protection level up to IP65.
- Cable, pigtails, patch cords are running through own path without disturbing each other.
- Wall-mounted or poled-mounted, suitable for both indoor and outdoor uses.

Specifications	
Material	PC+ABS/PP
L*W*H (mm)	351*210*87
Max Splicing Capacity (core)	24
Max Input (mm)	14
Max Output (mm)	2*3~5
Max Adapter (Pcs)	24
PLC Splitter (Pcs)	/
IP code	IP65
Packing Information	G.W.:20.3Kg QTY:10Pcs MEAS.:490*375*545mm



FTTH TERMINATION BOX

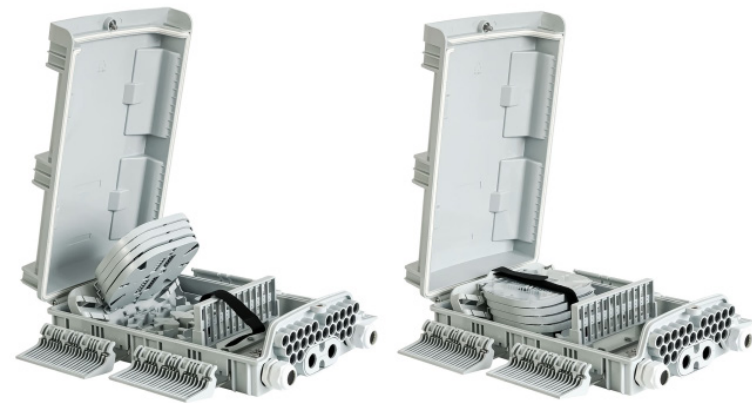
FAB-HGT-24N-2

Main features

- Total enclosed structure.
- Material: PC+ABS.
- Wet-proof, water-proof, dust-proof, anti-aging.
- Protection level up to IP65.
- Cable, pigtails, patch cords are running through own path without disturbing each other.
- Wall-mounted or poled-mounted, suitable for both indoor and outdoor uses.

www.fibramerica.com

Specifications	
Material	PC+ABS/PP
L*W*H (mm)	351*210*87
Max Splicing Capacity (core)	24
Max Input (mm)	15
Max Output (mm)	2*3~Ø5
Max Adapter (Pcs)	24
PLC Splitter (Pcs)	/
IP code	IP65
Packing Information	G.W.:20.3Kg QTY:10Pcs MEAS.:490*375*545mm



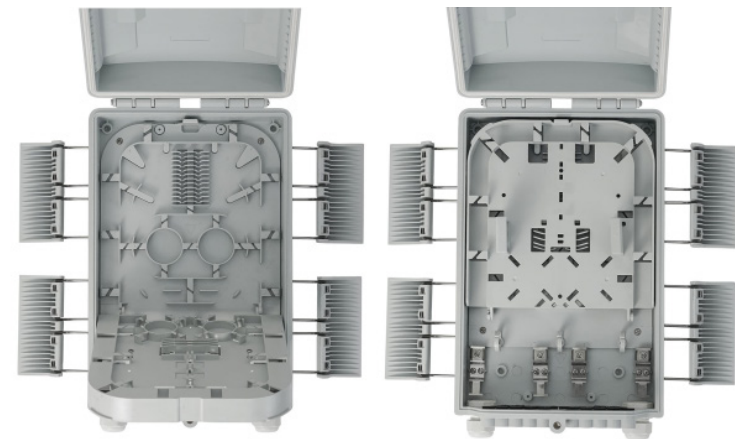
FTTH TERMINATION BOX

FAB-HGT-24N-CP

Main features

- Total enclosed structure.
- Material: PC+ABS.
- Wet-proof, water-proof, dust-proof, anti-aging.
- Protection level up to IP65.
- Cable, pigtails, patch cords are running through own path without disturbing each other.
- Wall-mounted or poled-mounted, suitable for both indoor and outdoor uses.

Specifications	
Material	PC+ABS/PP
L*W*H (mm)	351*210*87
Max Splicing Capacity (core)	24
Max Input (mm)	15
Max Output (mm)	2*3-Ø5
Max Adapter (Pcs)	24
PLC Splitter (Pcs)	/
IP code	IP65
Packing Information	G.W.:20.3Kg QTY:10Pcs MEAS.:490*375*545mm



FTTH TERMINATION BOX

PROBOX68-24A

Main features

- Advanced structure design, easy operation and reasonable routing.
- Material: PP.
- Moisture proof, waterproof, dust-proof, anti-aging.
- Protection level up to IP68.
- 1 oval optical cable entry, 2 branch optical cable entries and 24 pcs of household.
- Installation method: pole-mounted, wall-mounted, aerial-mounted.

www.fibramerica.com

Specifications	
Material	PC+ABS/PP
L*W*H (mm)	378*255*136
Max Splicing Capacity (core)	108
Max Input (mm)	Ø18
Max Output (mm)	2*3~Ø7
Max Adapter (Pcs)	24
PLC Splitter (Pcs)	/
IP code	IP68
Packing Information	G.W.:29Kg QTY:8Pcs MEAS.:540*405*620mm

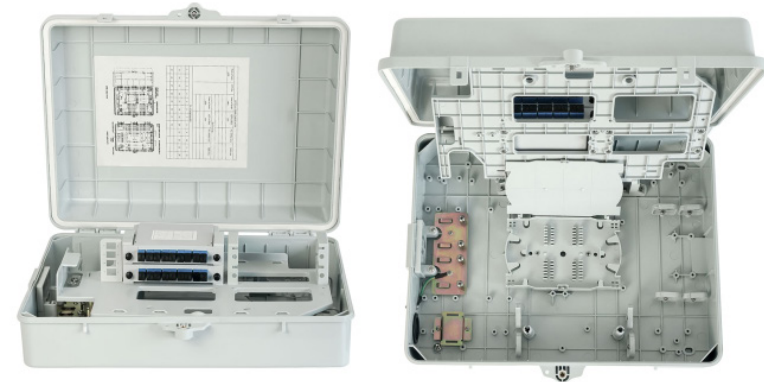


FTTH TERMINATION BOX
FAB-HGT-32B

Main features

- Total enclosed structure.
- Material: PC+ABS.
- Wet-proof, water-proof, dust-proof, anti-aging.
- Protection level up to IP65.
- Cable, pigtails, patch cords are running through own path without disturbing each other.
- Wall-mounted or poled-mounted, suitable for both indoor and outdoor uses.

Specifications	
Material	PC+ABS/PP
L*W*H (mm)	420*320*140
Max Splicing Capacity (core)	32
Max Input (mm)	/
Max Output (mm)	/
Max Adapter (Pcs)	/
PLC Splitter (Pcs)	32
IP code	IP65
Packing Information	G.W.:25.8Kg QTY:6Pcs MEAS.:730*440*480mm



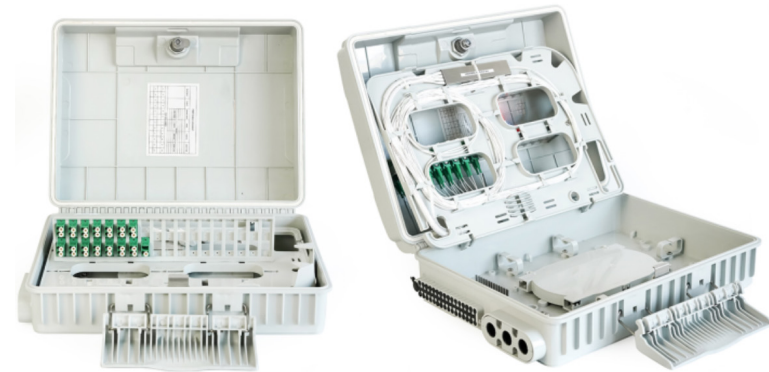
FTTH TERMINATION BOX
FAB-HGT-32C

Main features

- Total enclosed structure.
- Material: PC+ABS.
- Wet-proof, water-proof, dust-proof, anti-aging.
- Protection level up to IP65.
- Cable, pigtails, patch cords are running through own path without disturbing each other.
- Wall-mounted or poled-mounted, suitable for both indoor and outdoor uses.

www.fibramerica.com

Specifications	
Material	PC+ABS/PP
L*W*H (mm)	261*341*108
Max Splicing Capacity (core)	32
Max Input (mm)	/
Max Output (mm)	/
Max Adapter (Pcs)	/
PLC Splitter (Pcs)	32
IP code	IP65
Packing Information	G.W.:20.3Kg QTY:10Pcs MEAS.:490*375*545mm



FTTH TERMINATION BOX

FAB-HGT-32J



Main features

- Advanced structure design, easy operation and reasonable routing.
- Material: PP.
- Moisture proof, waterproof, dust-proof, anti-aging.
- Protection level up to IP65.
- 6 cable entry
- Installation method: pole-mounted, aerial-mounted, wall-mounted.

Specifications	
Material	PC+ABS/PP
L*W*H (mm)	383*205*120
Fusion capacity (Max)	48
Number of optical cable holes	6 cable entry
Micro PLC Splitter	1x2; 1x4; 1x8; 1x16
Into the largest cable diameter (mm)	Ø 12
Cable outlet size(mm)	2*3~Ø 7
IP protection level	IP65



FTTH TERMINATION BOX

FAB-HGT-36F

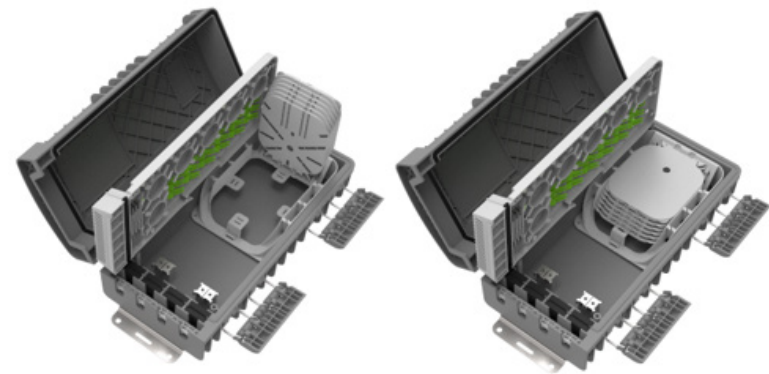


Main features

- Total enclosed structure.
- Material: PC+ABS, wet-proof, water-proof, dust-proof, anti-aging, protection level up to IP65
- Clamping for feeder cable and drop cable, fiber splicing, fixation, storage, distribution...etc all in one.
- Cable, pigtails, patch cords are running through own path without disturbing each other, cassette type LC adaptor installation, easy maintenance.
- Distribution panel can be flipped up, feeder cable can be placed in a cup-joint way, easy for maintenance and installation.

www.fibramerica.com

Specifications	
Material	PC+ABS/PP
L*W*H (mm)	345*158*108
Max Splicing Capacity (core)	72
Into the largest cable diameter (mm)	11
Cable outlet size	2*3
IP code	IP65
Máy. Capacity	36 SC



FTTH TERMINATION BOX

FAB-HGT-48H-1



Main features

- Total enclosed structure.
- Material: PC+ABS.
- Wet-proof, water-proof, dust-proof, anti-aging.
- Protection level up to IP65.
- Cable, pigtails, patch cords are running through own path without disturbing each other.
- Wall-mounted or poled-mounted, suitable for both indoor and outdoor uses.

Specifications	
Material	PC+ABS/PP
L*W*H (mm)	420*320*130
Max Splicing Capacity (core)	96
Max Input (mm)	/
Max Output (mm)	/
Max Adapter (Pcs)	48
PLC Splitter (Pcs)	/
IP code	IP65
Packing Information	G.W.:17.7Kg QTY:6Pcs MEAS.:755*460*480mm



FTTH TERMINATION BOX

FAB-HGT-64X-1

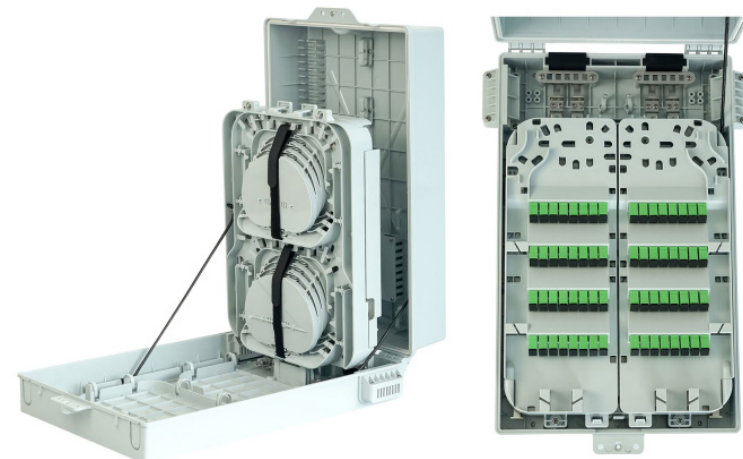


Main features

- Total enclosed structure.
- Material: PC+ABS.
- Wet-proof, water-proof, dust-proof, anti-aging.
- Protection level up to IP65.
- Cable, pigtails, patch cords are running through own path without disturbing each other.
- Wall-mounted.

www.fibramerica.com

Specifications	
Material	PC+ABS/PP
L*W*H (mm)	462*302*123
Max Splicing Capacity (core)	96
Max Input (mm)	Ø12
Max Output (mm)	2*3
Max Adapter (Pcs)	64
PLC Splitter (Pcs)	1*8*8
IP code	IP65
Packing Information	G.W.:21Kg QTY:6Pcs MEAS.:640*495*450mm

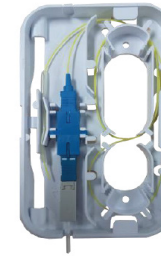




FTTH SOCKET

FAB-FFS-1AB

Max. Adapter: 1pc
 Size: 93*83*29
 Max. input: 2*3


FAB-FFS-1C

Max. Adapter: 1pc
 Size: 148*90*16
 Max. input: 2*3 ~ Ø6


FAB-FFS-1AB-1

Max. Adapter: 1pc
 Size: 93*83*29
 Max. input: 2*3


FAB-FFS-1E

Max. Adapter: 1pc
 Size: 95*55*20
 Max. input: 2*3 ~ Ø6


FAB-FFS-1B

Max. Adapter: 1pc
 Size: 116*85*22
 Max. input: 2*3


FAB-FFS-1F

Max. Adapter: 1pc
 Size: 90*25*16mm
 Max. input: 2*3 ~ Ø6

FTTH SOCKET



FAB-FFS-2C

Max. Adapter: 2pc
 Size: 86*86*24
 Max. input: 2*3



FAB-FFS-2D

Max. Adapter: 2pc
 Size: 105*82*23
 Max. input: 2*3 ~ Ø6



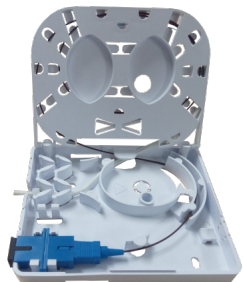
FAB-FFS-2D-1

Max. Adapter: 2pc
 Size: 108*83*23
 Max. input: Ø3 ~ Ø6



FAB-FFS-2EF

Max. Adapter: 2pc (RJ11, RJ45 and two SC adapters)
 Size: 105*82*23
 Max. input: 2*3



FAB-FFS-2F

Max. Adapter: 1pc
 Size: 93*83*29
 Max. input: 2*3



FAB-FFS-2G

Max. Adapter: 2pc
 Size: 116*70*18
 Max. input: Ø3 ~ Ø7

FTTH SOCKET



FAB-FFS-2H

Max. Adapter: 2pc
 Size: 130*83*24
 Max. input: 2*3



FAB-FFS-4A

Max. Adapter: 4pc
 Size: 150*110*30
 Max. input: 2*3



FAB-FFS-2H-1

Max. Adapter: 1pc duplex
 Size: 124*80*27
 Max. input: 2*3



FAB-FFS-4B

Max. Adapter: 4pc
 Size: 100*80*29
 Max. input: 2*3 ~ Ø7



FAB-FRB-2P

Max. Adapter: 2 pcs
 Size: 115*80*25
 Max. input: 5*8



FAB-FRB-4D

Max. Adapter: 4pc
 Size: 80*80*31
 Max. input: 2*3 ~ Ø7



FIBRAMÉRICA | Minqing Tancome Technology Co., Ltd
No 42, Baijin East Road, Baijin Industrial Park,
Baizhong Town, Minqing County, Fuzhou, Fujian, China
Phone: +86 18621754882

America office:
Rua Arthur Max Dóse, 153, Sala 1302
Balneário Camboriú – Brasil
Phone: (+55) 47 2033 2231
Contact: comercial@fibramerica.com

www.fibramerica.com