



FIBRAMÉRICA

FAB-PRECON: PRECONNECTORIZED SOLUTIONS



FIBRAMÉRICA

MINQING FIBRAMERICA TECHNOLOGY

Complete solutions for the intelligent development of fiber optic networks

Minqing Fibramerica Technology, under its trade name FIBRAMÉRICA, is one of the world's leading companies dedicated to the design, development, manufacture, distribution and marketing of advanced optical connectivity solutions. We work closely with the main players in the telecommunications market, such as operators, distributors and importers and installers all over the world, both as OEMs and under our own brand.

Its headquarters are located in Fuzhou, Fujian, China, with sales offices in Shanghai and Ningbo. It also has direct sales units in America, located in Brazil, where all commercial and technical support is provided in Spanish through its engineers and sector specialists. This expansion not only demonstrates its global vision, but also reflects its commitment to localized customer service, providing commercial and technical assistance in the same time zone and language as our customers.

On its path to excellence, FIBRAMÉRICA has adopted a continuous focus on improving processes, integrating emerging technologies and implementing effective communication strategies. Their dedication translates into competitive prices, efficient production times and comprehensive support, from the manufacturing process to product transportation.

Following the strictest international quality norms and standards, such as ISO9001, it guarantees that each of its products meets the quality and functionality expectations of the most demanding customers.

With a vision of the future, FIBRAMÉRICA focuses its efforts on developing and adapting new products, tailored to the specificities and needs of each project, from the initial design stage to final production.



FAB-PRECON: Preconnectorized Solutions

In the fast-paced telecommunications industry, efficiency and speed are essential. Preconnectorized solutions are revolutionizing the sector with new technologies that enable faster, more reliable, and cost-effective installations. Considering that labor for an FTTx installation can make up to 70% of the final cost, preconnectorized solutions are crucial for reducing complexity and installation time.

Fibramérica leads this transformation with its FAB-PRECON line, designed to meet the specific needs of each operator through modularity and customization. These solutions eliminate the need for specialized equipment and fiber splicing experts, minimizing human error and ensuring precision. The preconnectorized cable system offers pre-certified, ready-to-use components, simplifying installations to basic cleaning and inspection steps.

The FAB-PRECON line offers a comprehensive range from termination boxes to preconnectorized cables, ensuring speed and reliability in fiber optic projects. With ongoing research and development, this line continues to evolve,

providing cost savings, network robustness, and a competitive advantage. It's an intelligent investment that meets the emerging demands of the telecommunications sector, minimizing technical issues and supporting digital expansion.

Advantages of the FAB-PRECON system:

- **Agility and economy:** Reduction of installation time, minimizing labor hours and failures associated with maintenance.
- **Operational efficiency:** Reduction of expenses associated with the implementation and care of the optical network.
- **Ease of implementation and expansion:** FAB-PRECON solutions enable efficient connections in different types of networks, speeding up project implementation.
- **Assured quality:** Compliance with international standards, guaranteeing optical and mechanical parameters of all components.
- **Strategic competitiveness:** Allowing organizations to differentiate themselves and plan visionary investments.





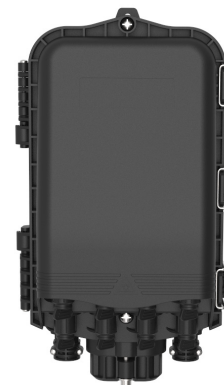
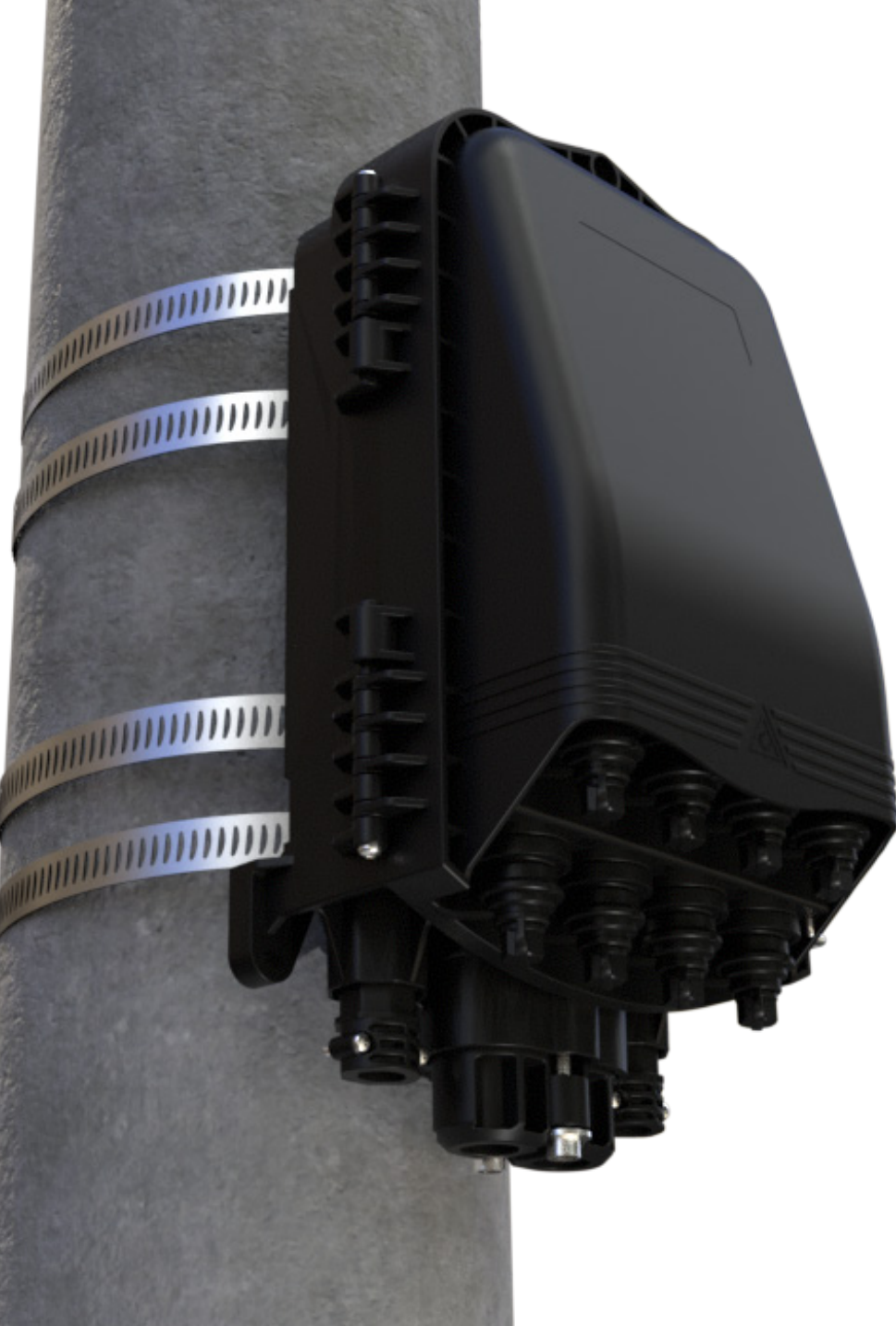
EVOCON

Designed for Tomorrow. Crafted for Today

Fibramérica's EVOCON boxes are a breakthrough in preconnectorized solutions, designed for more efficient installation and maintenance, significantly reducing operating costs. This efficiency is achieved through advanced engineering and a durable construction that ensures long-lasting performance. With premium materials and an IP68 protection rating, EVOCON enclosures are ideal for various environments, offering unmatched versatility in FTTx distribution networks.

The EVOCON design combines functionality and aesthetics, allowing the enclosures to blend seamlessly into urban, industrial, or residential settings. The textured surface minimizes visible marks and wear, enhancing their durability. Technically, the line offers two models: one with 8 preconnectorized ports and another with 16, both made of durable PP material for resistance against moisture, water, and external damage, ensuring long-term reliability.

Each EVOCON unit includes essential accessories for easy installation and offers versatile mounting options. This next-generation line exemplifies Fibramérica's commitment to innovation, providing a forward-looking solution for fiber optics that combines high performance with aesthetic appeal.

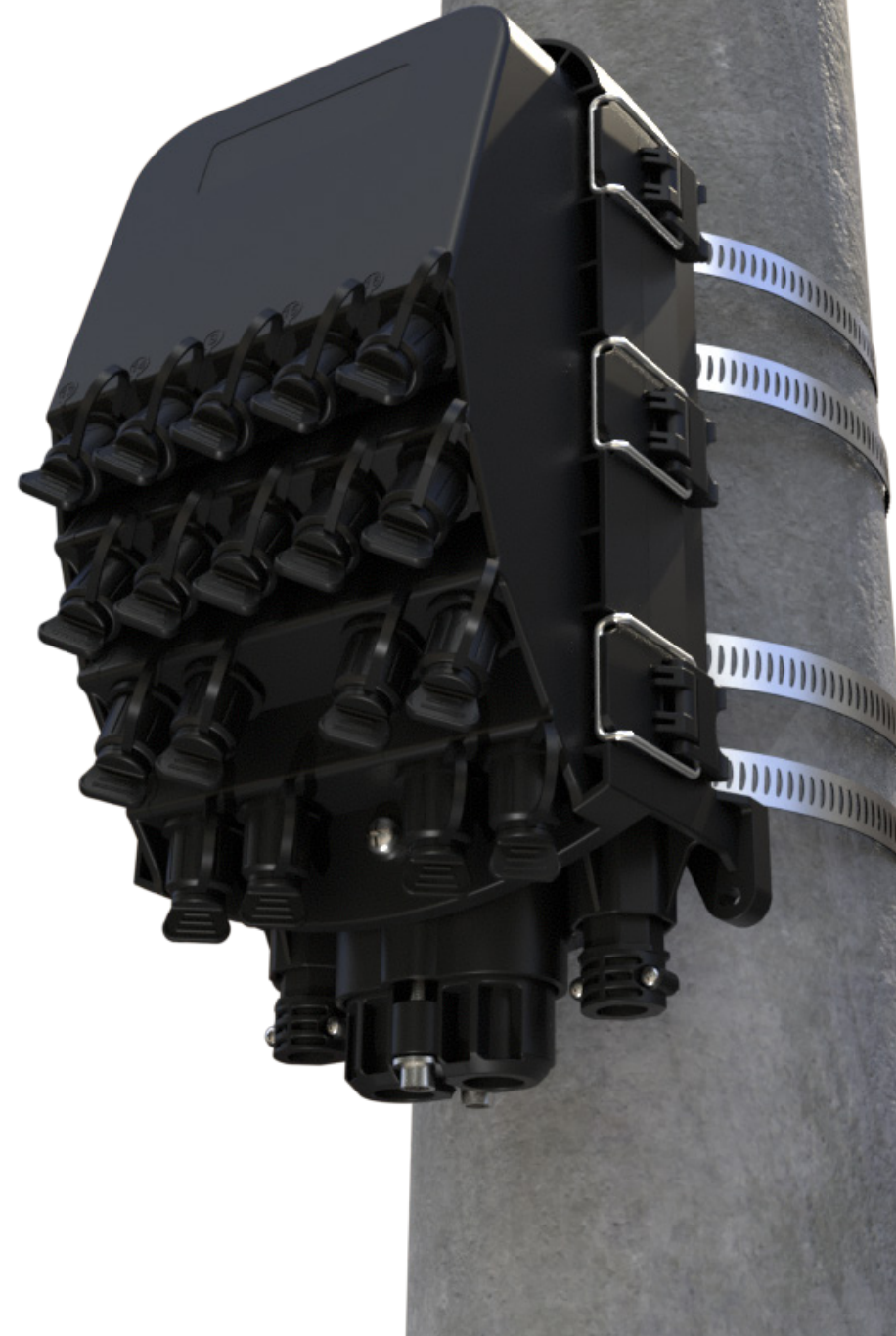


Evocon-8



Evocon-16

Items	Specification	
	EVOCON-8	EVOCON-16
External dimension (mm)	347*192*135	347*192*158
Installation hole position (mm)	285*165	285*165
Color	Black	Black
Size and quantity of optical cable hole	1 oval optical cable entry, 2 branch optical cable entries and 8 pre-connected adapters	1 oval optical cable entry, 2 branch optical cable entries and 16 pre-connected adapters
Fusion capacity(Max)	96	96
	64	64
	100	100
Micro PLC Splitter	1x2	1x2
	1x4	1x4
	1x8	1x8
	-	1x16
Fiber cable diameter of the uncut pass through port(mm)	ø18	ø18
Fiber cable dimension of branch cable port (mm)	ø14	ø14
IP protection level	IP68	IP68
Flammability	HB(Conventional)	HB(Conventional)
Neutral salt spray test (NSS)	48h	48h







Description

This preconnectorized box, designed for unbalanced network topologies, offers a unique design for easy installation and expansion. The FAB-HGT-2Y box is compact, hermetic, and adaptable with various splitters (PLC or FTB), meeting different project needs. Constructed from high-quality black plastic, the box provides a space for labels or QR codes and features an IP68 protection rating, ensuring durability and resilience in various working environments.

Main Features

- Advanced structure design, easy to operate and reasonable routing.
- Material: PP.
- Moisture-proof, water-proof, dust-proof, anti-aging.
- Protection level up to IP68.
- 3 pre-connected adapters.
- Installation method: pole mount, antenna mount, wall mount, hand hole, man hole.

Specification	
L*W*H (mm)	193*100*54
Material	PP
Max Splicing Capacity (core)	2
Max Input (mm)	-
Max Output (mm)	-
Max Adapter (PCS)	3 (mini SC)
PLC Splitter (PCS)	1*2 PLC
IP Code	IP68
Packing Information	G.W: 6.5Kg Qty: 20pcs MEAS.: 450*240*385mm



Main Features

- The bottom shell and the upper cover are fixed with screws, removable.
- Material: PP.
- Protection level up to IP68.
- Moisture proof, waterproof, dust-proof, anti-aging.
- 1 PG13.5 waterproof joint, 4 pre-connected adapters.
- Installation method: wall-mounted, pole-mounted, aerial-mounted.

Specification	
L*W*H (mm)	213*101*82
Material	PP
Max Splicing Capacity (core)	12
Max Input (mm)	-
Max Output (mm)	-
Max Adapter (PCS)	5 (mini SC)
PLC Splitter (PCS)	1*4
IP Code	IP68
Packing Information	G.W: 25Kg Qty: 40pcs MEAS.: 460*460*515mm



Main Features

- The bottom shell and the upper cover are fixed with screws, removable.
- Material: PP.
- Protection level up to IP68.
- Moisture proof, waterproof, dust-proof, anti-aging
- 1 cable entry, 4 pre-connected adapters.
- Installation method: wall-mounted, pole-mounted, aerial-mounted.

Specification	
L*W*H (mm)	202*101*82
Material	PP
Max Splicing Capacity (core)	12
Max Input (mm)	12
Max Output (mm)	-
Max Adapter (PCS)	4 (mini SC)
PLC Splitter (PCS)	1*4 PLC
IP Code	IP68
Packing Information	G.W: 25Kg Qty: 40pcs MEAS.: 510*460*515mm



Main Features

- Total enclosed structure, be in nice shape.
- Material: PP.
- Wet-proof, water-proof, dust-proof, anti-aging.
- Protection level up to IP68.
- Cable, pigtails, patch cords are running through own path without disturbing each other.
- Distribution panel can be flipped up, feeder cable can be placed by express port.
- Installation method: wall-mounted and pole-mounted.

Specification	
L*W*H (mm)	235*101*82
Material	PP
Max Splicing Capacity (core)	12
Max Input (mm)	14
Max Output (mm)	-
Max Adapter (PCS)	4 (mini SC)
PLC Splitter (PCS)	1*4 PLC
IP Code	IP68
Packing Information	G.W: 25Kg Qty: 40pcs MEAS.: 510*460*515mm



Main Features

- The bottom shell and the upper cover are fixed with screws, removable.
- Material: PP.
- Protection level up to IP68.
- Moisture proof, waterproof, dust-proof, anti-aging.
- 1 PG11 waterproof joint, 4 pre-connected adapters.
- Installation method: wal-mounted, pole-mounted, aerial-mounted.

Specification	
L*W*H (mm)	182*138*78
Material	PP+GF
Max Splicing Capacity (core)	12
Max Input (mm)	11
Max Output (mm)	-
Max Adapter (PCS)	4 (mini SC)
PLC Splitter (PCS)	1*4 PLC
IP Code	IP68
Packing Information	G.W: 9Kg Qty: 20pcs MEAS.: 425*310*560mm



Main Features

- Advanced structure design.
- Material: PP or PC+ABS.
- Moisture proof, waterproof, dust-proof, anti-aging.
- Protection level up to IP65.
- 3 silicone plugs for incoming and outgoing cables and 8 pre connected adapters.
- Installation method: pole-mounted, aerial-mounted, wall-mounted.

Specification	
L*W*H (mm)	281*177*109
Material	PC+ABS/PP
Max Splicing Capacity (core)	36
Max Input (mm)	ø8~14
Max Output (mm)	-
Max Adapter (PCS)	8 (mini SC)
PLC Splitter (PCS)	1*8
IP Code	IP65
Packing Information	G.W: 12Kg Qty: 10pcs MEAS.: 400*310*615mm



Main Features

- Totally enclosed structure.
- Material: PP.
- Moisture proof, waterproof, dust-proof, anti-aging.
- Protection level IP68.
- Clamping, splicing, fixation, storage and distribution of feeder cable and drop cable are integrated.
- The internal configuration is 1 * 2 FTB + 1 * 8 PLC splitter.
- Installation method: wall-mounted, pole-mounted, aerial-mounted.

Specification	
L*W*H (mm)	179*171*66
Material	PP
Max Splicing Capacity (core)	-
Max Input (mm)	-
Max Output (mm)	-
Max Adapter (PCS)	10 (mini SC)
PLC Splitter (PCS)	1*2 FBT+1*8 PLC/1*9 PLC
IP Code	IP68
Packing Information	G.W: 28.1Kg Qty: 40pcs MEAS.: 810*410*510mm



Main Features

- Totally enclosed structure.
- Material: PP.
- Moisture proof, waterproof, dust-proof, anti-aging.
- Protection level IP68.
- Clamping, splicing, fixation, storage and distribution of feeder cable and drop cable are integrated.
- The internal configuration is 1 * 8 PLC splitter.
- Installation method: pole-mounted, aerial-mounted, wall-mounted.

Specification	
L*W*H (mm)	179*171*66
Material	PP
Max Splicing Capacity (core)	-
Max Input (mm)	-
Max Output (mm)	-
Max Adapter (PCS)	9 (mini SC)
PLC Splitter (PCS)	1*8 PLC
IP Code	IP68
Packing Information	G.W: 28.1Kg Qty: 40pcs MEAS.: 810*410*510mm



Main Features

- The bottom shell and the upper cover are fixed with screws, removable.
- Material: PP.
- Protection level up to IP68.
- Moisture proof, waterproof, dust-proof, anti-aging.
- The interior is equipped with 1x2 FTB splitter+ 1x8 PLC splitter or 1x8 PLC splitter.
- Installation method: wall-mounted, pole-mounted, aerial-mounted.

Specification	
L*W*H (mm)	264*100*66
Material	PP
Max Splicing Capacity (core)	12
Max Input (mm)	-
Max Output (mm)	-
Max Adapter (PCS)	10 (mini SC)
PLC Splitter (PCS)	1*2 FBT+1*8 PLC/1*8 PLC
IP Code	IP68
Packing Information	G.W: 17Kg Qty: 20pcs MEAS.: 440*330*460mm



Main Features

- Advanced structure design.
- Material: PP.
- Moisture proof, waterproof, dust-proof, anti-aging.
- Protection level up to IP68.
- 1 oval optical cable entry, 8 pre-connected adapters, or 1 round optical cable entry, 9 pre-connected adapters, 4 types of tray are optional, and even 2 types of tray can be mixed installation.
- Installation method: pole-mounted, aerial-mounted, wall-mounted.

Specification	
L*W*H (mm)	270*217*102
Material	PP+GF
Max Splicing Capacity (core)	96
Max Input (mm)	2*(ø18)
Max Output (mm)	-
Max Adapter (PCS)	8 (mini SC)
PLC Splitter (PCS)	1/8*4
IP Code	IP68
Packing Information	G.W: 17.8Kg Qty: 10pcs MEAS.: 460*290*570mm



Main Features

- Advanced structure design.
- Material: PP.
- Moisture proof, waterproof, dust-proof, anti-aging.
- Protection level up to IP68.
- 1 PG13.5 waterproof joint, 9 pre-connected adapters.
- Installation method: pole-mounted, aerial-mounted, wall-mounted.

Specification	
L*W*H (mm)	270*218*102
Material	PP+GF
Max Splicing Capacity (core)	96
Max Input (mm)	12
Max Output (mm)	-
Max Adapter (PCS)	9 (mini SC)
PLC Splitter (PCS)	1*8 PLC / 1*16 PLC
IP Code	IP68
Packing Information	G.W: 17.8Kg Qty: 10pcs MEAS.: 460*290*570mm



Main Features

- Advanced structure design.
- Material: PP.
- Moisture proof, waterproof, dust-proof, anti-aging.
- Protection level up to IP68.
- 1 oval optical cable entry, 8 pre-connected adapters, or 1 round optical cable entry, 9 pre-connected adapters, 4 types of tray are optional, and even 2 types of tray can be mixed installation.
- Installation method: pole-mounted, aerial-mounted, wall-mounted.

Specification	
L*W*H (mm)	270*218*102
Material	PP+GF
Max Splicing Capacity (core)	96
Max Input (mm)	-
Max Output (mm)	-
Max Adapter (PCS)	13 (mini SC)
PLC Splitter (PCS)	1*4 PLC + 1*8 PLC
IP Code	IP68
Packing Information	G.W: 17.8Kg Qty: 10pcs MEAS.: 460*290*570mm



Main Features

- Advanced structure design.
- Material: PP or PC+ABS.
- Moisture proof, waterproof, dust-proof, anti-aging.
- Protection level up to IP68
- 9 pre-connected adapters.
- Installation method: pole-mounted, aerial-mounted, wall-mounted.

Specification	
L*W*H (mm)	264*182*82
Material	PC+ABS/PP
Max Splicing Capacity (core)	2
Max Input (mm)	-
Max Output (mm)	-
Max Adapter (PCS)	9
PLC Splitter (PCS)	1*8 PLC
IP Code	IP68
Packing Information	G.W: 15Kg Qty: 10pcs MEAS.: 410*315*510mm



Main Features

- Advanced structure design.
- Material: PP or PC+ABS.
- Moisture proof, waterproof, dust-proof, anti-aging.
- Protection level up to IP68
- 1 oval optical cable entry.
- Installation method: pole-mounted, aerial-mounted, wall-mounted.

Specification	
L*W*H (mm)	264*182*84
Material	PC+ABS/ABS/PP
Max Splicing Capacity (core)	2
Max Input (mm)	12
Max Output (mm)	-
Max Adapter (PCS)	8 (mini SC)
PLC Splitter (PCS)	1*8 PLC
IP Code	IP68
Packing Information	G.W: 15Kg Qty: 10pcs MEAS.: 410*315*510mm



Main Features

- The bottom shell and the upper cover are fixed with screws, removable.
- Material: PP.
- Protection level up to IP68.
- Moisture proof, waterproof, dust-proof, anti-aging.
- 1 oval optical cable entry, 2 branch optical cable entries and 8 pre-connected adapters.
- Various types of splice trays are available.
- Installation method: wall-mounted, pole-mounted, aerial-mounted.

Specification	
L*W*H (mm)	377*255*122
Material	PP+GF
Max Splicing Capacity (core)	136
Max Input (mm)	18
Max Output (mm)	-
Max Adapter (PCS)	8 (mini SC)
PLC Splitter (PCS)	1*8 or 1*16
IP Code	IP68
Packing Information	G.W: 25Kg Qty: 8pcs MEAS.: 540*405*540mm



Main Features

- Advanced structure design, easy operation and reasonable routing.
- Material: PP or PC+ABS.
- Moisture proof, waterproof, dust-proof, anti-aging.
- Protection level up to IP68.
- 1 oval optical cable entry, 2 branch optical cable entries and 8 pre-connected adapters.
- Various types of splice trays are available.
- Installation method: pole-mounted, aerial-mounted, wall-mounted.

Specification	
L*W*H (mm)	377*225*122
Material	PC+ABS/PP
Max Splicing Capacity (core)	108
Max Input (mm)	18
Max Output (mm)	18
Max Adapter (PCS)	8 (mini SC)
PLC Splitter (PCS)	1*8 or 1*16
IP Code	IP68
Packing Information	G.W: 25Kg Qty: 8pcs MEAS.: 500*405*555mm



Main Features

- Waterproof design, IP65.
- Built-in 4 pcs Splicing tray with 8mm thickness, per tray max splicing capacity 12 cores, stainless steel bolts and nuts.
- 1x8 PLC splitter can be installed in each splicing tray with 8mm thickness.
- 8 pcs splicing tray with 4mm thickness are replaceable, per tray max splicing capacity 12 cores.
- Bending radius of fiber is bigger than 40mm.
- 8 pcs mechanical ports for HUAWEI Mini SC drop cable, 2pcs Branch holes for ø16mm cable.
- 2 uncut port for uncut cable(Max ø14mm).

Specification	
L*W*H (mm)	319*207*98
Material	PC+ABS/ABS
Max Splicing Capacity (core)	136
Max Input (mm)	2*(ø18)
Max Output (mm)	-
Max Adapter (PCS)	8 (mini SC)
PLC Splitter (PCS)	1*8/1*16
IP Code	IP65
Packing Information	G.W: 14Kg Qty: 10pcs MEAS.: 450*360*630mm



Main Features

- The bottom shell and the upper cover are fixed with screws, removable.
- Material: PC*ABS.
- Protection level up to IP68.
- Moisture proof, waterproof, dust-proof, anti-aging.
- 1 oval optical cable entry, 2 branch optical cable entries and 8 pre-connected adapters.
- Various types of splice trays are available.
- Installation method: wall-mounted, pole-mounted, aerial-mounted.

Specification	
L*W*H (mm)	350*200*98
Material	PC+ABS/ABS
Max Splicing Capacity (core)	136
Max Input (mm)	ø18
Max Output (mm)	-
Max Adapter (PCS)	8 (mini SC)
PLC Splitter (PCS)	-
IP Code	IP68
Packing Information	G.W: 16Kg Qty: 10pcs MEAS.: 450*380*630mm



Main Features

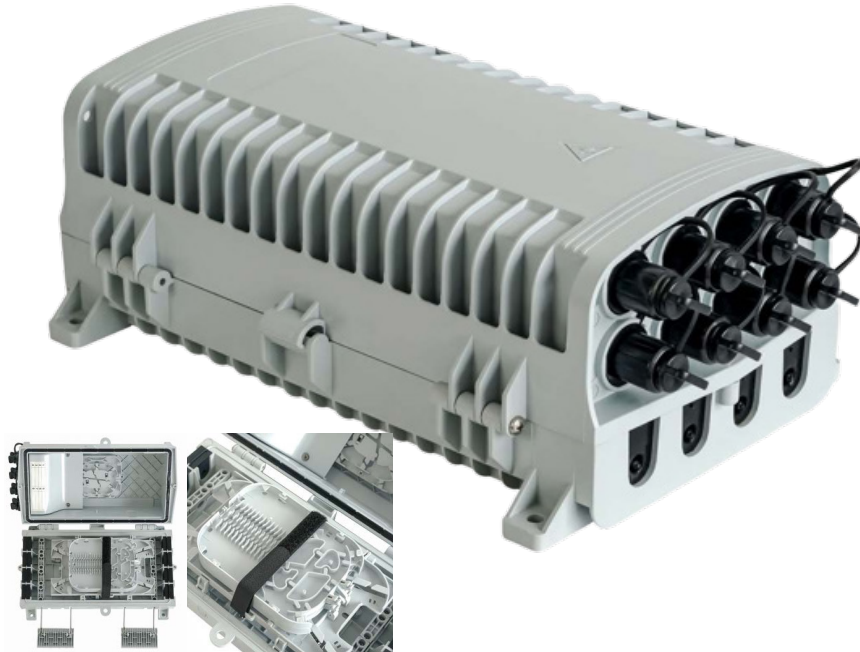
- The bottom shell and the upper cover are fixed with screws, removable.
- Material: PC*ABS.
- Protection level up to IP68.
- Moisture proof, waterproof, dust-proof, anti-aging.
- 1 oval optical cable entry, 2 branch optical cable entries and 8 pre-connected adapters.
- Various types of splice trays are available.
- Installation method: wall-mounted, pole-mounted, aerial-mounted.

Main Features

- Advanced structure design, easy operation and reasonable routing.
- Material: PP
- Moisture proof, waterproof, dust-proof, anti-aging.
- Protection level up to IP68.
- 1 oval optical cable entry and 9 pre-connected adapters.
- Installation method: pole-mounted, aerial-mounted, wall-mounted.

Specification	
L*W*H (mm)	319*207*98
Material	PC+ABS/ABS
Max Splicing Capacity (core)	136
Max Input (mm)	2*(ø18)
Max Output (mm)	-
Max Adapter (PCS)	8 (mini SC)
PLC Splitter (PCS)	1*8 PLC / 1*16 PLC
IP Code	IP65
Packing Information	G.W: 16Kg Qty: 10pcs MEAS.: 450*380*630mm

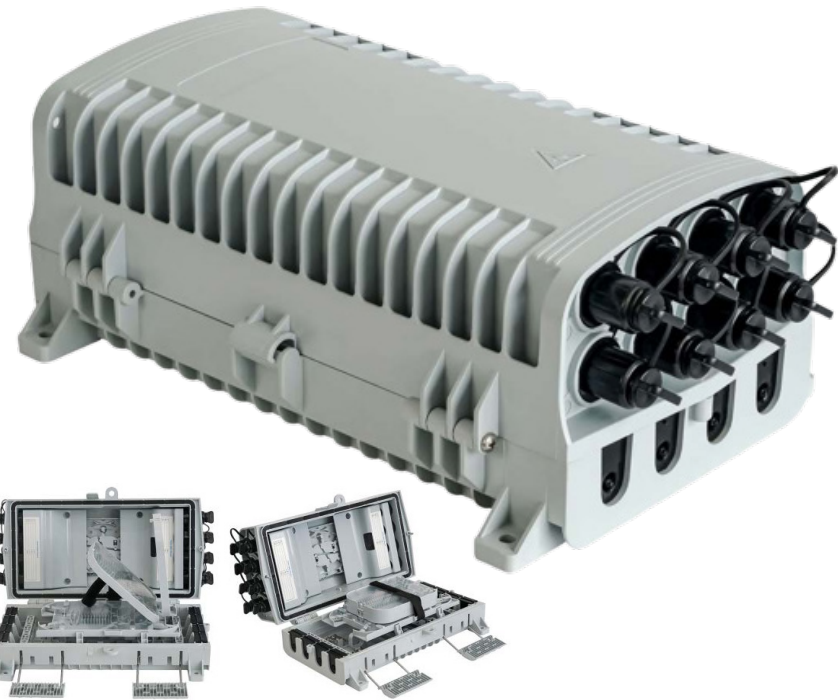
Specification	
L*W*H (mm)	201*180*135
Material	PC+ABS/ABS/PP+GF
Max Splicing Capacity (core)	32
Max Input (mm)	ø8~ø14
Max Output (mm)	-
Max Adapter (PCS)	9 (mini SC)
PLC Splitter (PCS)	1*8 PLC
IP Code	IP68
Packing Information	G.W: 11Kg Qty: 10pcs MEAS.: 440*300*770mm



Main Features

- Advanced structure design, easy operation and reasonable routing.
- Material: PC+ABS.
- Moisture proof, waterproof, dust-proof, anti-aging.
- Protection level up to IP65.
- 8 in / out cable holes, 8 pre connected adapters.
- Installation method: pole-mounted, aerial- mounted, wall-mounted.
- It can be equipped with drop cable storage tray to meet the storage of 50 meters / 5mm round cable.

Specification	
L*W*H (mm)	329*195*120
Material	PC+ABS/ABS/PP+GF
Max Splicing Capacity (core)	68
Max Input (mm)	5~17
Max Output (mm)	-
Max Adapter (PCS)	8 (mini SC)
PLC Splitter (PCS)	1*8 PLC
IP Code	IP65
Packing Information	G.W: 16Kg Qty: 10pcs MEAS.: 450*370*685mm



Main Features

- Advanced structure design, easy operation and reasonable routing.
- Material: PC+ABS.
- Moisture proof, waterproof, dust-proof, anti-aging.
- Protection level up to IP65.
- 8 in / out cable holes, 16 pre connected adapters.
- Installation method: pole-mounted, aerial-mounted, wall-mounted.

Specification	
L*W*H (mm)	345*195*120
Material	PC+ABS/ABS
Max Splicing Capacity (core)	68
Max Input (mm)	5~17
Max Output (mm)	-
Max Adapter (PCS)	16 (mini SC)
PLC Splitter (PCS)	1/8*2
IP Code	IP65
Packing Information	G.W: 17Kg Qty: 10pcs MEAS.: 450*380*685mm



Main Features

- Advanced structure design, easy operation and reasonable routing.
- Material: PC+ABS.
- Moisture proof, waterproof, dust-proof, anti-aging.
- Protection level up to IP65.
- 1 oval optical cable entry, 2 branch optical cable entries and 8 pre-connected adapters.
- Installation method: pole-mounted, wall-mounted.

Main Features

- Advanced structure design, easy operation and reasonable routing.
- Material: PC+ABS.
- Moisture proof, waterproof, dust-proof, anti-aging.
- Protection level up to IP65.
- 1 oval optical cable entry, 9 pre-connected adapters.
- Installation method: pole-mounted, wall-mounted.

Specification	
L*W*H (mm)	356*216*89
Material	PC+ABS/ABS
Max Splicing Capacity (core)	60
Max Input (mm)	ø15
Max Output (mm)	-
Max Adapter (PCS)	8 (mini SC)
PLC Splitter (PCS)	1/8 PLC
IP Code	IP65
Packing Information	G.W: 20.3Kg Qty: 10pcs MEAS.: 490*375*545mm

Specification	
L*W*H (mm)	356*216*89
Material	PC+ABS/ABS
Max Splicing Capacity (core)	60
Max Input (mm)	ø15
Max Output (mm)	-
Max Adapter (PCS)	9 (mini SC)
PLC Splitter (PCS)	1/8 PLC
IP Code	IP65
Packing Information	G.W: 20.3Kg Qty: 10pcs MEAS.: 490*375*545mm



Main Features

- Advanced structure design, easy operation and reasonable routing.
- Material: PC+ABS.
- Moisture proof, waterproof, dust-proof, anti-aging.
- Protection level up to IP65.
- 1 PG 13.5 waterproof joint, 9 pre-connected adapters.
- Installation method: pole-mounted, wall-mounted, aerial-mounted.

Main Features

- The bottom shell and the upper cover are fixed with screws, removable.
- Material: PP.
- Protection level up to IP68.
- Moisture proof, waterproof, dust-proof, anti-aging.
- 1 PG16 waterproof joint, 8 pre-connected adapters.
- Installation method: wall-mounted, pole-mounted, aerial-mounted.

Specification	
L*W*H (mm)	290*181*83
Material	PC+ABS/ABS
Max Splicing Capacity (core)	36
Max Input (mm)	12
Max Output (mm)	-
Max Adapter (PCS)	9 (mini SC)
PLC Splitter (PCS)	1*8 PLC / 1*8 cassette type PLC splitter
IP Code	IP65
Packing Information	G.W: 12.9Kg Qty: 10pcs MEAS.: 410*320*570mm

Specification	
L*W*H (mm)	280*173*74
Material	PP
Max Splicing Capacity (core)	12
Max Input (mm)	ø14
Max Output (mm)	-
Max Adapter (PCS)	89 (mini SC)
PLC Splitter (PCS)	1*8 PLC
IP Code	IP68
Packing Information	G.W: 17Kg Qty: 20pcs MEAS.: 600*390*490mm



Main Features

- The bottom shell and the upper cover are fixed with screws, removable.
- Material: PP.
- Protection level up to IP68.
- Moisture proof, waterproof, dust-proof, anti-aging.
- 1 fiber optica cable inlet, 8 pre-connected adapters.
- Installation method: wall-mounted, pole-mounted, aerial-mounted.

Specification	
L*W*H (mm)	294*173*74v
Material	PP
Max Splicing Capacity (core)	12
Max Input (mm)	ø14
Max Output (mm)	-
Max Adapter (PCS)	8 (mini SC)
PLC Splitter (PCS)	1*8 PLC
IP Code	IP68
Packing Information	G.W: 17Kg Qty: 20pcs MEAS.: 600*390*490mm



Main Features

- The bottom shell and the upper cover are fixed with screws, removable.
- Material: PP.
- Moisture proof, waterproof, dust-proof, anti-aging.
- Protection level up to IP68.
- 1 PG 16 waterproof joint, 12 pre-connected adapters.
- Installation method: pole-mounted, aerial-mounted, wall-mounted.

Specification	
L*W*H (mm)	280*173*74
Material	PP
Max Splicing Capacity (core)	12
Max Input (mm)	ø14
Max Output (mm)	-
Max Adapter (PCS)	12 (mini SC)
PLC Splitter (PCS)	1*4 PLC + 1*8 PLC
IP Code	IP68
Packing Information	G.W: 17Kg Qty: 20pcs MEAS.: 600*390*490mm



Main Features

- The bottom shell and the upper cover are fixed with screws, removable.
- Material: PP.
- Moisture proof, waterproof, dust-proof, anti-aging.
- Protection level up to IP68.
- 1 fiber optic cable inlet, 12 pre-connected adapters.
- Installation method: pole-mounted, aerial-mounted, wall-mounted.

Specification	
L*W*H (mm)	294 *173*74
Material	PP
Max Splicing Capacity (core)	12
Max Input (mm)	ø14
Max Output (mm)	-
Max Adapter (PCS)	12 (mini SC)
PLC Splitter (PCS)	1*4 PLC + 1*8 PLC
IP Code	IP68
Packing Information	G.W: 17Kg Qty: 20pcs MEAS.: 600*390*490mm





Main Features

- The bottom shell and the upper cover are fixed with screws, removable.
- Material: PP.
- Moisture proof, waterproof, dust-proof, anti-aging.
- Protection level up to IP65.
- The interior is equipped with 1x8 PLC splitter.
- Installation method: pole-mounted, aerial-mounted, wall-mounted.

Specification	
L*W*H (mm)	220*217*79
Material	PP plastic or PC+ABS
Max Splicing Capacity (core)	12
Max Input (mm)	8
Max Output (mm)	2 (oval port)
Max Adapter (PCS)	8 (mini SC)
PLC Splitter (PCS)	1*8 PLC
IP Code	IP68
Packing Information	G.W: 16.5Kg Qty: 20pcs MEAS.: 440*360*460mm



Main Features

- The bottom shell and the upper cover are fixed with screws, removable.
- Material: PP.
- Moisture proof, waterproof, dust-proof, anti-aging.
- Protection level up to IP68.
- The interior is equipped with 1x4 PLC splitter+ 1x8 PLC splitter or 1x8 PLC splitter.
- Installation method: pole-mounted, aerial-mounted, wall-mounted.

Specification	
L*W*H (mm)	210*199*78
Material	PP
Max Splicing Capacity (core)	-
Max Input (mm)	-
Max Output (mm)	-
Max Adapter (PCS)	12 (mini SC)
PLC Splitter (PCS)	1*4 PLC + 1*8 PLC
IP Code	IP68
Packing Information	G.W: 17Kg Qty: 20pcs MEAS.: 450*430*450mm



Main Features

- The bottom shell and the upper cover are fixed with screws, removable.
- Material: PP.
- Moisture proof, waterproof, dust-proof, anti-aging.
- Protection level up to IP68.
- The interior is equipped with 1x4 PLC splitter+ 1x8 PLC splitter or 1x8 PLC splitter.
- Installation method: pole-mounted, aerial-mounted, wall-mounted.

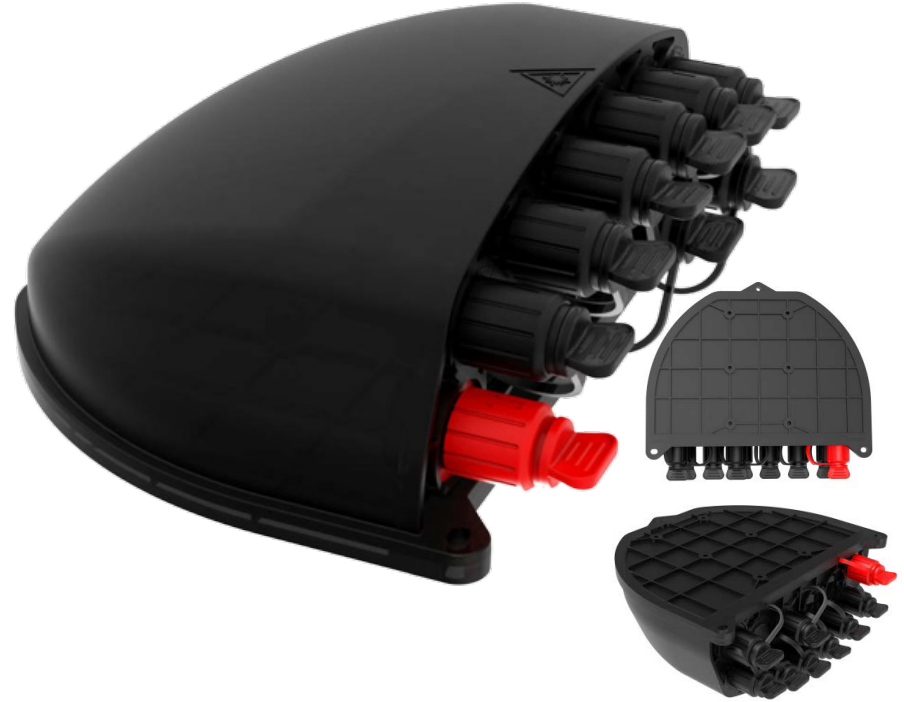
Specification	
L*W*H (mm)	210*199*78
Material	PP
Max Splicing Capacity (core)	-
Max Input (mm)	-
Max Output (mm)	-
Max Adapter (PCS)	9 (mini SC)
PLC Splitter (PCS)	1*8 PLC
IP Code	IP68
Packing Information	G.W: 17Kg Qty: 20pcs MEAS.: 450*430*450mm



Main Features

- The bottom shell and the upper cover are fixed with screws, removable.
- Material: PP.
- Moisture proof, waterproof, dust-proof, anti-aging.
- Protection level up to IP68.
- The interior is equipped with 1x4 PLC splitter+ 1x8 PLC splitter or 1x8 PLC splitter.
- Installation method: pole-mounted, aerial-mounted, wall-mounted.

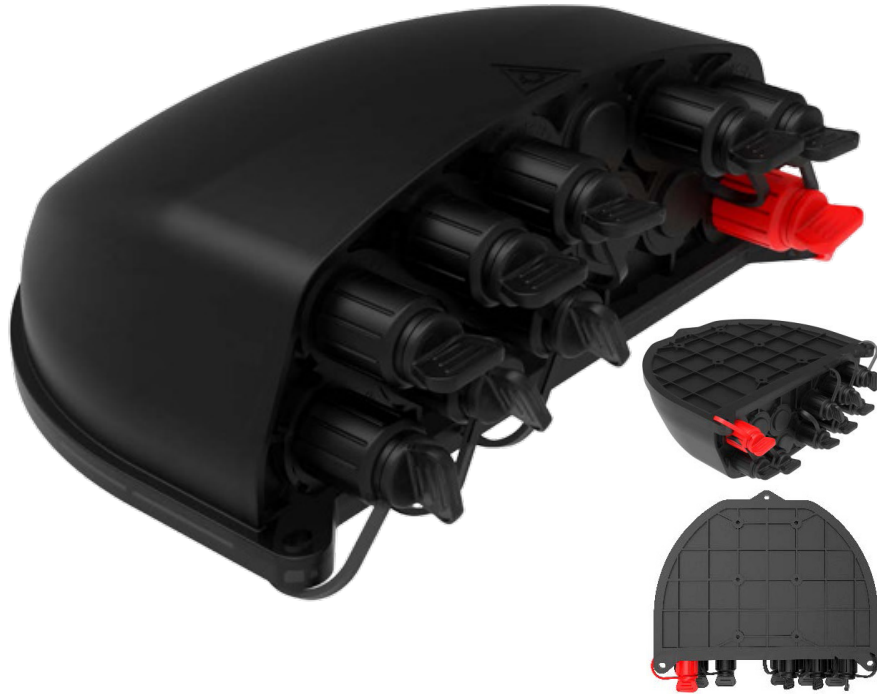
Specification	
L*W*H (mm)	210*199*78
Material	PP
Max Splicing Capacity (core)	-
Max Input (mm)	-
Max Output (mm)	-
Max Adapter (PCS)	10 (mini SC)
PLC Splitter (PCS)	1*2 FTB + 1*8 PLC
IP Code	IP68
Packing Information	G.W: 17Kg Qty: 20pcs MEAS.: 450*430*450mm



Main Features

- The bottom shell and upper cover are welded by hot plate welding, which is not detachable.
- Material: PP.
- Moisture proof, waterproof, dust-proof, anti-aging.
- Protection level up to IP68.
- The interior is equipped with 1x4 PLC splitter + 1x8 PLC splitter or 1x8 PLC splitter.
- Installation method: pole-mounted, aerial-mounted, wall-mounted.

Specification	
L*W*H (mm)	197*175*77
Material	PP
Max Splicing Capacity (core)	12
Max Input (mm)	-
Max Output (mm)	-
Max Adapter (PCS)	12 (mini SC)
PLC Splitter (PCS)	1*4 PLC + 1*8 PLC
IP Code	IP68
Packing Information	G.W: 17Kg Qty: 20pcs MEAS.: 450*430*450mm



Main Features

- The bottom shell and upper cover are welded by hot plate welding, which is not detachable.
- Material: PP.
- Moisture proof, waterproof, dust-proof, anti-aging.
- Protection level up to IP68.
- The interior is equipped with 1x4 PLC splitter + 1x8 PLC splitter or 1x8 PLC splitter.
- Installation method: pole-mounted, aerial-mounted, wall-mounted.

Specification	
L*W*H (mm)	197*175*77
Material	PP
Max Splicing Capacity (core)	-
Max Input (mm)	-
Max Output (mm)	-
Max Adapter (PCS)	9 (mini SC)
PLC Splitter (PCS)	1*8 PLC
IP Code	IP68
Packing Information	G.W: 16.5Kg Qty: 20pcs MEAS.: 440*360*460mm



Main Features

- The bottom shell and upper cover are welded by hot plate welding, which is not detachable.
- Material: PP.
- Moisture proof, waterproof, dust-proof, anti-aging.
- Protection level up to IP68.
- The interior is equipped with 1x4 PLC splitter + 1x8 PLC splitter or 1x8 PLC splitter.
- Installation method: pole-mounted, aerial-mounted, wall-mounted.

Specification	
L*W*H (mm)	363*153*107
Material	PP
Max Splicing Capacity (core)	56
Max Input (mm)	18
Max Output (mm)	-
Max Adapter (PCS)	14 (mini SC)
PLC Splitter (PCS)	1*4 PLC + 1*8 PLC
IP Code	IP68
Packing Information	G.W: 15Kg Qty: 10pcs MEAS.: 390*350*630mm



Main Features

- The bottom shell and upper cover are welded by hot plate welding, which is not detachable.
- Material: PP.
- Moisture proof, waterproof, dust-proof, anti-aging.
- Protection level up to IP68.
- The interior is equipped with 1x4 PLC splitter + 1x8 PLC splitter or 1x8 PLC splitter.
- Installation method: pole-mounted, aerial-mounted, wall-mounted.

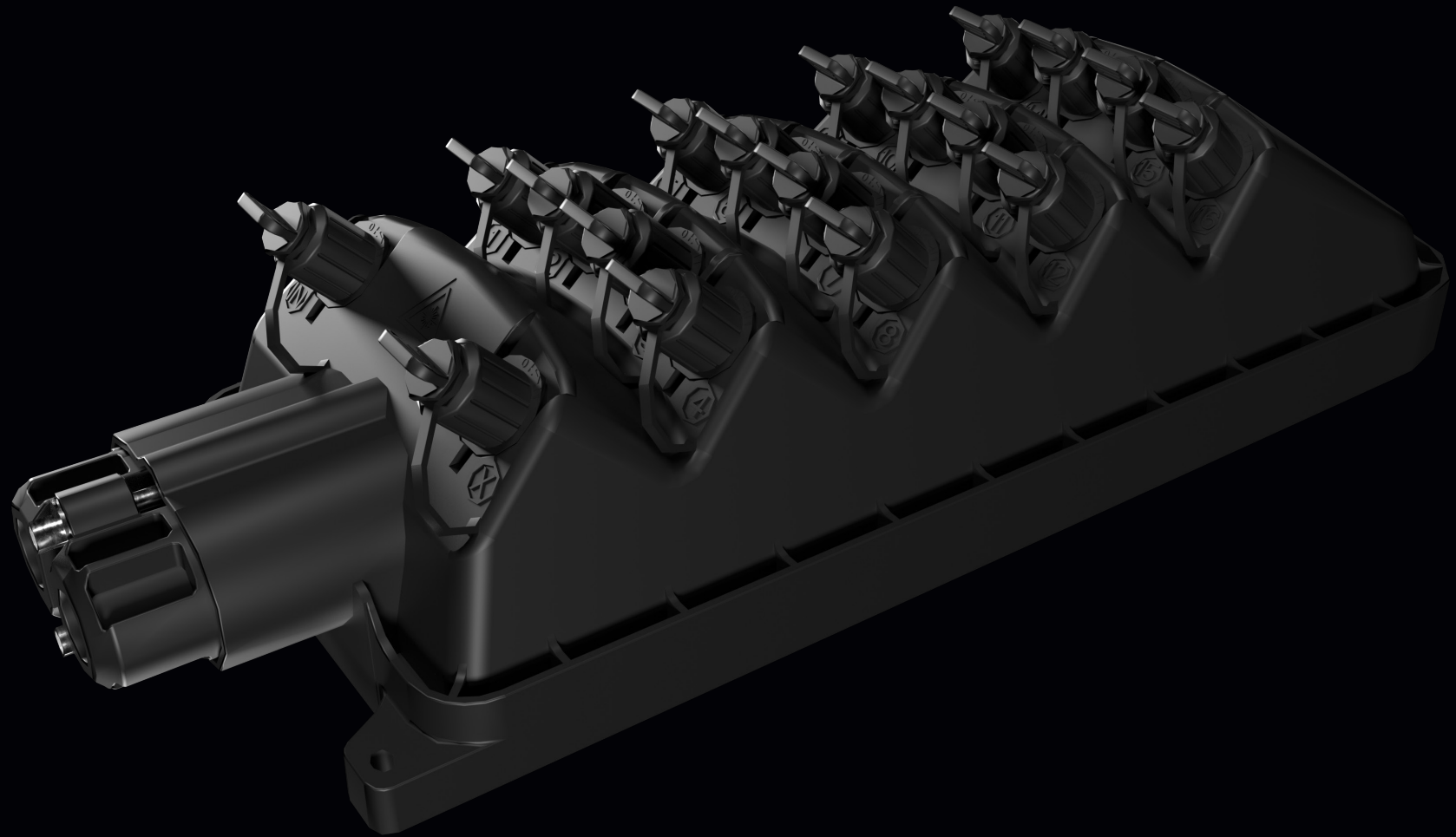
Specification	
L*W*H (mm)	327*153*107
Material	PP
Max Splicing Capacity (core)	56
Max Input (mm)	ø8~14
Max Output (mm)	-
Max Adapter (PCS)	14 (mini SC)
PLC Splitter (PCS)	1*4 PLC + 1*8 PLC
IP Code	IP68
Packing Information	G.W: 13Kg Qty: 10pcs MEAS.: 360*350*630mm



Main Features

- The bottom shell and upper cover are welded by hot plate welding, which is not detachable.
- Material: PP.
- Moisture proof, waterproof, dust-proof, anti-aging.
- Protection level up to IP68.
- The interior is equipped with 1x4 PLC splitter + 1x8 PLC splitter or 1x8 PLC splitter.
- Installation method: pole-mounted, aerial-mounted, wall-mounted.

Specification	
L*W*H (mm)	353*153*107
Material	PP
Max Splicing Capacity (core)	56
Max Input (mm)	ø16
Max Output (mm)	-
Max Adapter (PCS)	14 (mini SC)
PLC Splitter (PCS)	1*4 PLC + 1*8 PLC
IP Code	IP68
Packing Information	G.W: 13Kg Qty: 10pcs MEAS.: 380*350*630mm





Main Features

- The bottom shell and the upper cover are fixed with screws, removable.
- Material: PC+ABS.
- Moisture proof, waterproof, dust-proof, anti-aging.
- 1 oval optical cable entry, 2 branch optical cable entries and 12 pre-connected adapters.
- Protection level up to IP65.
- Installation method: wall-mounted, pole-mounted, aerial-mounted.

Specification	
L*W*H (mm)	254*213*117
Material	PC+ABS/ABS
Max Splicing Capacity (core)	36
Max Input (mm)	ø16
Max Output (mm)	-
Max Adapter (PCS)	12 (mini SC)
PLC Splitter (PCS)	1*8 PLC / 1*8 Cassette type PLC splitter
IP Code	IP65
Packing Information	G.W: 13.5Kg Qty: 10pcs MEAS.: 480*290*710mm

Main Features

- Total enclosed structure.
- Material: PP.
- Wet-proof, water-proof, dust-proof, anti-aging.
- Protection level up to IP68.
- Clamping for feeder cable and drop cable, fiber splicing, fixation, storage, distribution...etc all in one.
- Wall-mounted, poled-mounted or aerial, suitable for both indoor and outdoor uses.

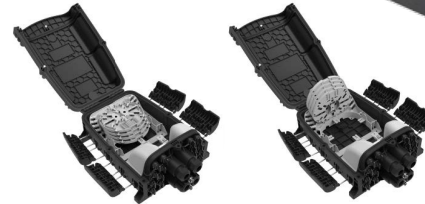
Specification	
L*W*H (mm)	388*242*128
Material	PP
Max Splicing Capacity (core)	200
Max Input (mm)	18
Max Output (mm)	2*3~ø7
Max Adapter (PCS)	4 (mini SC)
PLC Splitter (PCS)	1*8 PLC / 1*16 PLC
IP Code	IP68
Packing Information	G.W: 23Kg Qty: 6pcs MEAS.: 530*425*470mm



Main Features

- Total enclosed structure.
- Material: PP
- Wet-proof, water-proof, dust-proof, anti-aging.
- Protection level up to IP68.
- Clamping for feeder cable and drop cable, fiber splicing, fixation, storage, distribution...etc all in one.
- Wall-mounted,poled-mounted or aerial, suitable for both indoor and outdoor uses.

Specification	
L*W*H (mm)	389*242*128
Material	PP
Max Splicing Capacity (core)	200
Max Input (mm)	18
Max Output (mm)	2*3-ø7
Max Adapter (PCS)	8 (mini SC)
PLC Splitter (PCS)	1*8 PLC / 1*16 PLC
IP Code	IP68
Packing Information	G.W: 23Kg Qty: 6pcs MEAS.: 530*425*470mm



Main Features

- Advanced structure design, easy operation and reasonable routing.
- Material: PP.
- Moisture proof, waterproof, dust-proof, anti-aging.
- Protection level up to IP68.
- 1 oval optical cable entry, 2 branch optical cable entries and 16 pcs of household.
- Type splice trays optional.
- Installation method: pole-mounted, aerial- mounted, wall-mounted.

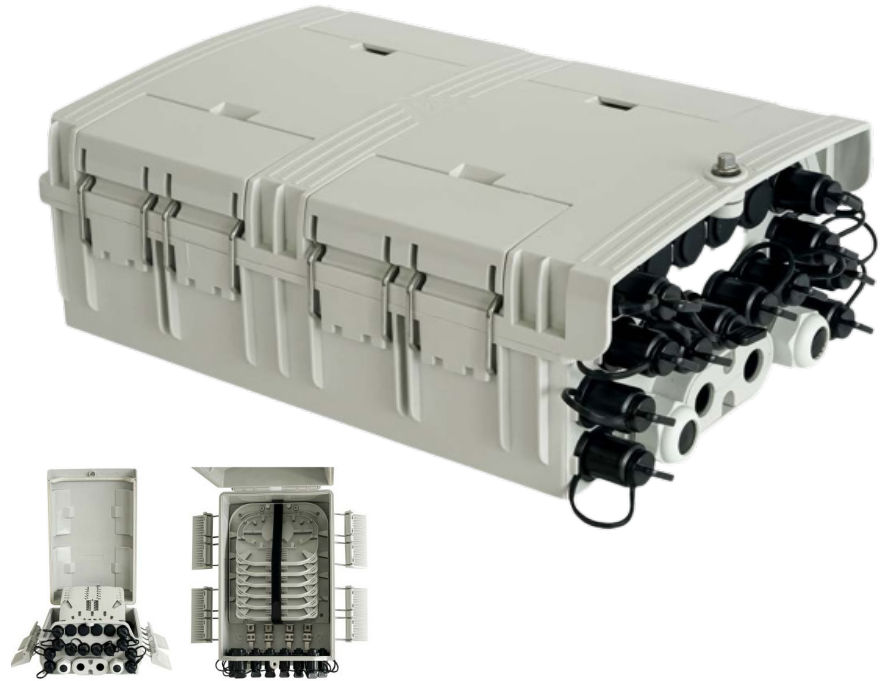
Specification	
L*W*H (mm)	378*255*116
Material	PP
Max Splicing Capacity (core)	136
Max Input (mm)	ø18
Max Output (mm)	-
Max Adapter (PCS)	16 (mini SC)
PLC Splitter (PCS)	1*8 / 1*16
IP Code	IP68
Packing Information	G.W: 29Kg Qty: 8pcs MEAS.: 540*405*620mm



Main Features

- Advanced structure design, easy operation and reasonable routing.
- Material: PP.
- Moisture proof, waterproof, dust-proof, anti-aging.
- Protection level up to IP68.
- 1 oval optical cable entry and 16 pcs pre-connected adapters.
- 3 type splice trays optional.
- Installation method: pole-mounted, aerial- mounted, wall-mounted.

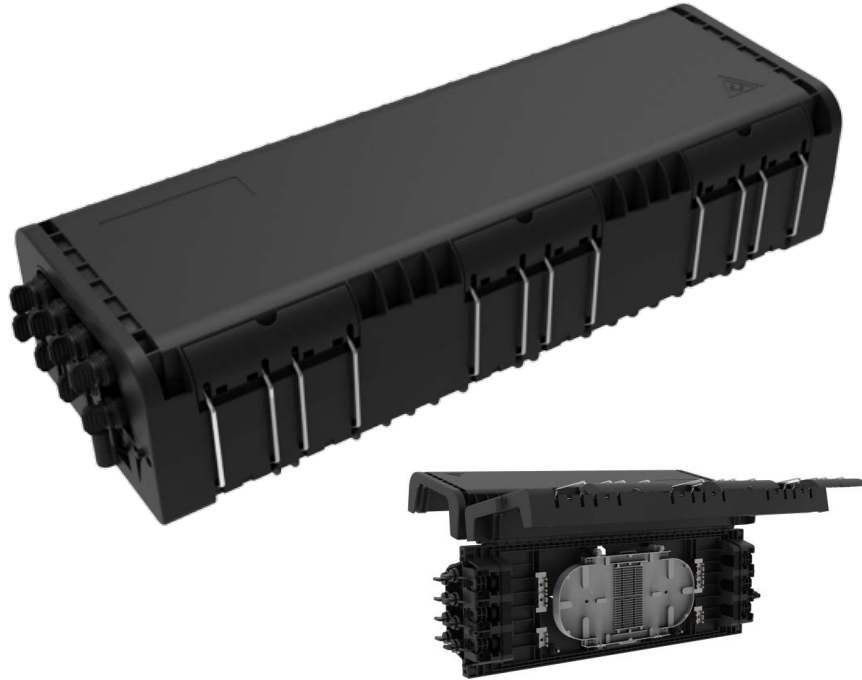
Specification	
L*W*H (mm)	378*255*116
Material	PP
Max Splicing Capacity (core)	136
Max Input (mm)	ø18
Max Output (mm)	-
Max Adapter (PCS)	16 (mini SC)
PLC Splitter (PCS)	1*8 / 1*16
IP Code	IP68
Packing Information	G.W: 29Kg Qty: 8pcs MEAS.: 540*405*620mm



Main Features

- Total enclosed structure.
- Material: PC+ABS.
- Wet-proof, water-proof, dust-proof, anti-aging. Protection level up to IP65.
- Cable, pigtails, patch cords are running through own path without disturbing each other.
- Wall-mounted or poled-mounted, suitable for both indoor and outdoor uses.

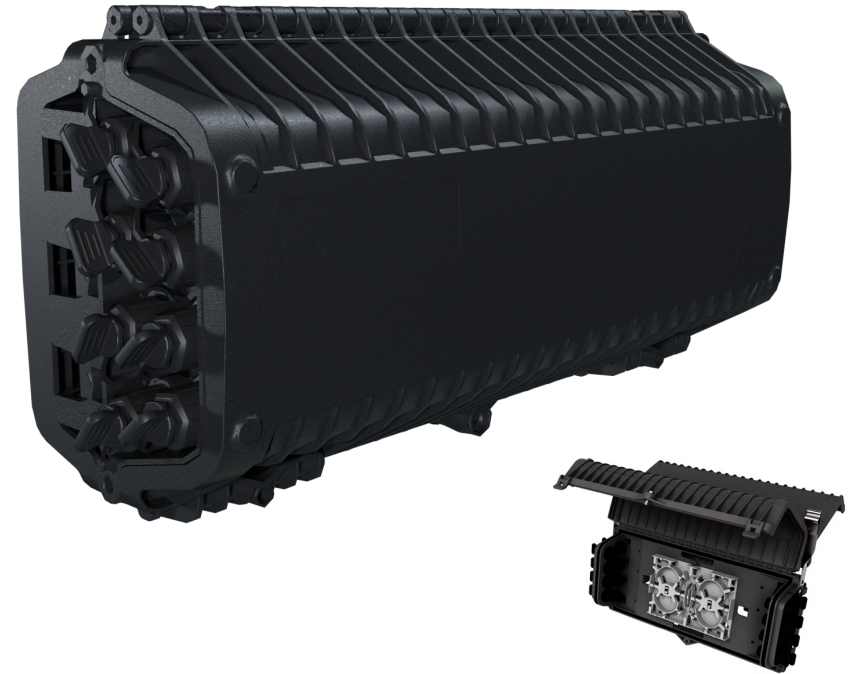
Specification	
L*W*H (mm)	356*216*122
Material	PC+ABS/ABS
Max Splicing Capacity (core)	72
Max Input (mm)	14
Max Output (mm)	-
Max Adapter (PCS)	16 (mini SC)
PLC Splitter (PCS)	1*8
IP Code	IP65
Packing Information	G.W: 21Kg Qty: 10pcs MEAS.: 480*390*710mm



Main Features

- Total enclosed structure.
- Material: PP.
- Wet-proof, water-proof, dust-proof, anti-aging.
- Protection level up to IP65.
- 6 Cable entries and 16 pre-connected adapters.
- Installation method: aerial-mounted.

Specification	
L*W*H (mm)	445*181*118
Material	PC+ABS/ABS
Max Splicing Capacity (core)	48
Max Input (mm)	ø14
Max Output (mm)	-
Max Adapter (PCS)	14
PLC Splitter (PCS)	1*8*2 / 1*16
IP Code	IP65
Packing Information	G.W: 35Kg Qty: 10pcs MEAS.: 590*410*700mm



Main Features

- Advanced structure design, easy operation and reasonable routing.
- Material: PP or PC+ABS.
- Moisture proof, waterproof, dust-proof, anti-aging.
- Protection level up to IP65.
- 6 Cable entries and 16 pre-connected adapters.
- Various types of splice trays are available.
- Installation method: pole-mounted, aerial-mounted, wall-mounted.

Specification	
L*W*H (mm)	360*160*117.6
Material	PP / ABS+PC
Max Splicing Capacity (core)	84
Size and quantity of optical cable hole	6 Cable entries and 16 pre-connected adapters
Micro PLC Splitter	1*8 PLC or 1*16 PLC
Fiber cable diameter of the uncut pass through port(mm)	ø17
IP Code	IP65
Packing Information	G.W: 25Kg Qty: 8pcs MEAS.: 540*405*540mm



Main Features

- Advanced structure design, easy operation and reasonable routing.
- Material: PP or PC+ABS.
- Moisture proof, waterproof, dust-proof, anti-aging.
- Protection level up to IP65.
- 1 oval optical cable entry, 2 branch optical cable entries and 16 pre-connected adapters.
- 2 type splice trays optional.
- Installation method: pole-mounted, aerial-mounted, wall-mounted.

Specification	
L*W*H (mm)	319*221*133
Material	PC+ABS/PP
Max Splicing Capacity (core)	96
Max Input (mm)	ø08~ø18
Max Output (mm)	-
Max Adapter (PCS)	16 (mini SC)
PLC Splitter (PCS)	1*8 / 1*16
IP Code	IP65
Packing Information	G.W: 16Kg Qty: 10pcs MEAS.: 480*350*805mm



Main Features

- Advanced structure design, easy operation and reasonable routing.
- Material: PP or PC+ABS.
- Moisture proof, waterproof, dust-proof, anti-aging.
- Protection level up to IP65.
- 1 oval optical cable entry, 2 branch optical cable entries and 16 pre-connected adapters. 2 type splice trays optional.
- Installation method: pole-mounted, aerial-mounted, wall-mounted.

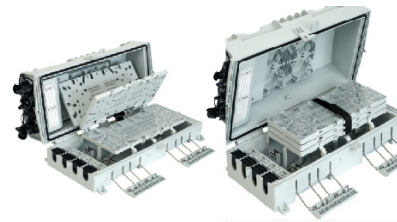
Specification	
L*W*H (mm)	350*221*133
Material	PC+ABS/PP
Max Splicing Capacity (core)	96
Max Input (mm)	ø08~ø18
Max Output (mm)	ø16
Max Adapter (PCS)	16
PLC Splitter (PCS)	1*8 and 1*16
IP Code	IP65
Packing Information	G.W: 17Kg Qty: 10pcs MEAS.: 480*380*805mm



Main Features

- Advanced structure design, easy operation and reasonable routing.
- Material: PC+ABS.
- Moisture proof, waterproof, dust-proof, anti-aging.
- Protection level up to IP65.
- 8 in / out cable holes, 16 pre connected adapters.
- Installation method: pole-mounted, aerial-mounted, wall-mounted.

Specification	
L*W*H (mm)	416*199*121
Material	PC+ABS/PP
Max Splicing Capacity (core)	72
Max Input (mm)	ø05~ø17
Max Output (mm)	-
Max Adapter (PCS)	8 (mini SC) or 16 (mini SC)
PLC Splitter (PCS)	1*8 / 1*16
IP Code	IP65
Packing Information	G.W: 23Kg Qty: 10pcs MEAS.: 480*430*770mm



Main Features

- Total enclosed structure.
- Material: PC+ABS.
- Wet-proof, water-proof, dust-proof, anti-aging.
- Protection level up to IP65.
- Cable, pigtails, patch cords are running through own path without disturbing each other.
- Wall-mounted or poled-mounted, suitable for both indoor and outdoor uses.

Specification	
L*W*H (mm)	404*199*121
Material	PC+ABS/PP
Max Splicing Capacity (core)	96
Max Input (mm)	ø05~ø17
Max Output (mm)	-
Max Adapter (PCS)	8 (mini SC)
PLC Splitter (PCS)	1*8 PLC / 1*16
IP Code	IP65
Packing Information	G.W: 23Kg Qty: 10pcs MEAS.: 440*430*770mm



Main Features

- Total enclosed structure.
- Material: PC+ABS.
- Wet-proof, water-proof, dust-proof, anti-aging.
- Protection level up to IP65.
- Cable, pigtails, patch cords are running through own path without disturbing each other.
- Wall-mounted or poled-mounted, suitable for both indoor and outdoor uses.

Main Features

- Total enclosed structure.
- Material: PC+ABS.
- Wet-proof, water-proof, dust-proof, anti-aging.
- Protection level up to IP65.
- Cable, pigtails, patch cords are running through own path without disturbing each other.
- Wall-mounted or poled-mounted, suitable for both indoor and outdoor uses.

Specification	
L*W*H (mm)	398*199*183
Material	PC+ABS/ABS/PP
Max Splicing Capacity (core)	160
Max Input (mm)	ø07~ø15
Max Output (mm)	-
Max Adapter (PCS)	16*(mini SC)
PLC Splitter (PCS)	1*8 or 1*16
IP Code	IP65
Packing Information	G.W: 19Kg Qty: 6pcs MEAS.: 440*430*650mm

Specification	
L*W*H (mm)	430*196*139
Material	PP
Max Splicing Capacity (core)	144
Max Input (mm)	ø05~ø16
Max Output (mm)	-
Max Adapter (PCS)	16*(mini SC)
PLC Splitter (PCS)	1*8 / 1*16 PLC
IP Code	IP68
Packing Information	G.W: 26Kg Qty: 8pcs MEAS.: 460*440*640mm



Main Features

- The bottom shell and the upper cover are fixed with screws, removable.
- Material: PC+ABS.
- Moisture proof, waterproof, dust-proof, anti-aging.
- Protection level up to IP65.
- 1 PG21 waterproof joint , 16 pre-connected adapters.
- Installation method: wall-mounted, pole-mounted, aerial-mounted.

Main Features

- The bottom shell and the upper cover are fixed with screws, removable.
- Material: PC+ABS.
- Moisture proof, waterproof, dust-proof, anti-aging.
- Protection level up to IP65.
- 18 pre-connected adapters.
- Installation method: wall-mounted, pole-mounted, aerial-mounted.

Specification	
L*W*H (mm)	256*213*117
Material	PC+ABS/ABS
Max Splicing Capacity (core)	36
Max Input (mm)	ø18
Max Output (mm)	-
Max Adapter (PCS)	16 (mini SC)
PLC Splitter (PCS)	1*8 PLC / 1*8 Cassette type PLC splitter
IP Code	IP65
Packing Information	G.W: 13.5Kg Qty: 10pcs MEAS.: 480*290*710mm

Specification	
L*W*H (mm)	256*213*117
Material	PC+ABS/ABS
Max Splicing Capacity (core)	36
Max Input (mm)	ø8 ~ø16
Max Output (mm)	-
Max Adapter (PCS)	16 (mini SC)
PLC Splitter (PCS)	1*8 PLC: 2pcs / 1*8 Cassette type PLC splitter: 2pcs
IP Code	IP65
Packing Information	G.W: 13.5Kg Qty: 10pcs MEAS.: 480*290*710mm

Preconnectorized Termination Box FAB-HGT-16Y-3



Main Features

- The bottom shell and the upper cover are fixed with screws, removable.
- Material: PC+ABS.
- Moisture proof, waterproof, dust-proof, anti-aging.
- Protection level up to IP65.
- 1 oval optical cable entry, 2 branch optical cable entries and 12 pre-connected adapters.
- Installation method: wall-mounted, pole-mounted, aerial-mounted.

Specification	
L*W*H (mm)	254*213*117
Material	PC+ABS/ABS
Max Splicing Capacity (core)	36
Max Input (mm)	ø16
Max Output (mm)	-
Max Adapter (PCS)	12 (mini SC)
PLC Splitter (PCS)	1*8 PLC / 1*8 Cassette type PLC splitter
IP Code	IP65
Packing Information	G.W: 13.5Kg Qty: 10pcs MEAS.: 480*290*710mm





Description

The FAB-HGT-18X box is a new version of Fibramérica's linear terminal box models for preconnectorized networks. Its robust structure is designed for multiple applications in FTTx networks, from splicing in access networks, field termination of drop cables or preconnectorized networks.

Its mechanical ruggedized adapter technology and cable entry/exit port design streamline the connection and implementation of networks. It has a maximum capacity of 20 ruggedized adapters, which support the connection of ruggedized connectors and standard SC type connectors through the SIMPRECON solution, in addition to 6 trays of 24 fusions to allow up to 144 splices.

The IP68 environmental protection of the terminal allows its installation in both overhead and subway networks, either in chambers or directly buried.

Main Features

- Advanced structure design, easy to operate and reasonable routing.
- Material: PP.
- Moisture-proof, water-proof, dust-proof, anti-aging.
- Protection level up to IP68.
- 8 input/output cable holes, 18 pre-connected adapters.
- Inside can be equipped with FBT splitter 1x2 + PLC splitter 1x16.
- Installation method: wall-mounted, pole-mounted, aerial-mounted.

Specification	
Body material	PC+ABS/ABS/PP
Material of metal accessories	High quality stainless steel
Outer dimensions	430*196*137.5mm
Number of ports	16 ports (with possibility to expand to 20)
Number of splitters	1 splitter FBT 1x2 + 1 splitter PLC 1x16
Degree of protection	IP68
Fusing capacity	144FO (6 trays of 24FO - double layer)



Main Features

- The bottom shell and the upper cover are fixed with screws, removable.
- Material: PP.
- Moisture proof, waterproof, dust-proof, anti-aging.
- Protection level up to IP68.
- 18 pre-connected adapters
- Installation method: wall-mounted, pole-mounted, aerial-mounted.

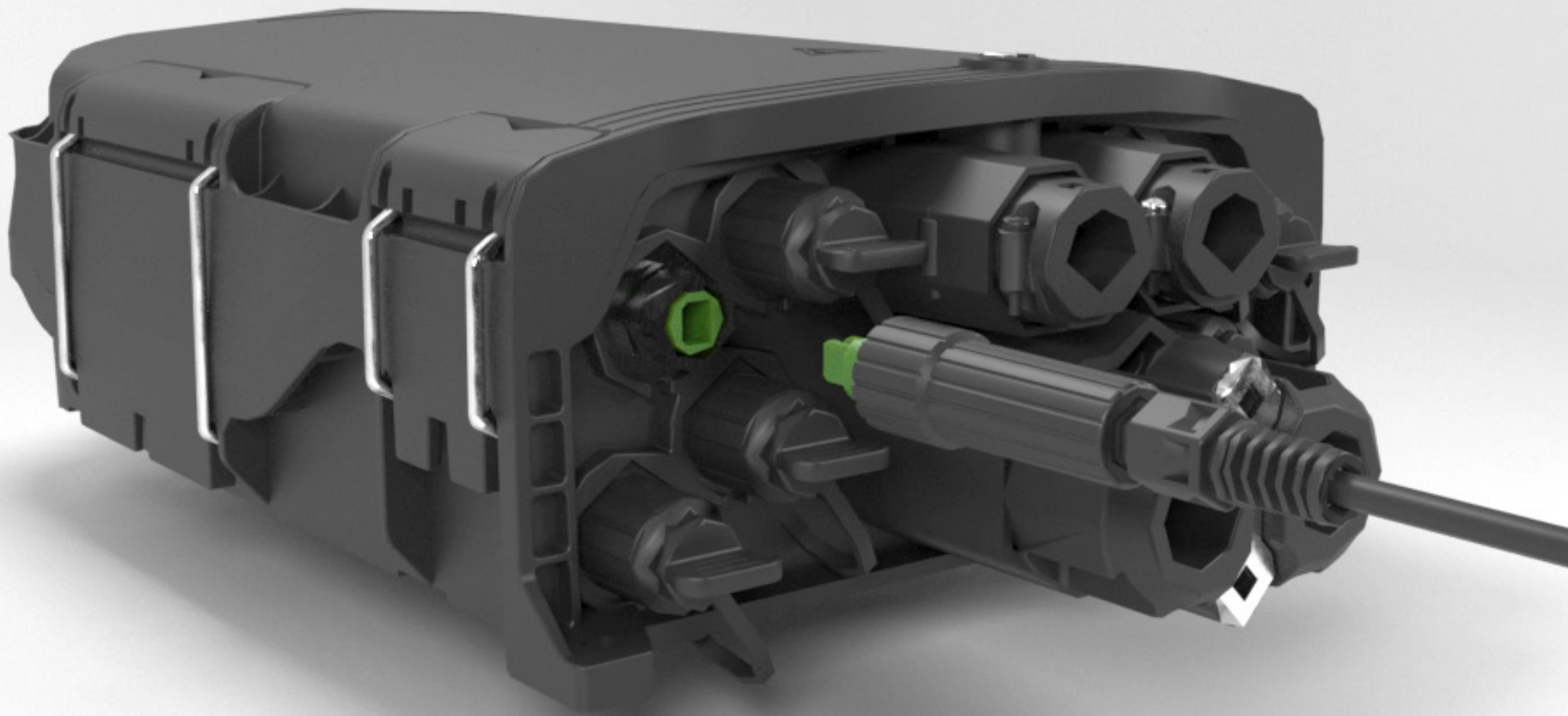
Specification	
L*W*H (mm)	210*199*107
Material	PP
Max Splicing Capacity (core)	-
Max Input (mm)	-
Max Output (mm)	-
Max Adapter (PCS)	18 (mini SC)
PLC Splitter (PCS)	1*2 FTB + 1*16 PLC
IP Code	IP68
Packing Information	G.W: 19Kg Qty: 20pcs MEAS.: 460*440*640mm



Main Features

- Advanced structure design, easy operation and reasonable routing.
- Material: PP. Protection level up to IP68.
- Moisture proof, waterproof, dust-proof, anti-aging
- 1 oval optical cable entry, 2 branch optical cable entries and 8 pre-connected adapters.
- Various types of splice trays are available.
- Installation method: pole-mounted, aerial-mounted, wall-mounted.

Specification	
L*W*H (mm)	310*204*139
Material	PP
Max Splicing Capacity (core)	100
Max Input (mm)	ø18
Max Output (mm)	-
Max Adapter (PCS)	8 (mini SC)
PLC Splitter (PCS)	1*4 PLC: 2pcs or 1*8 PLC: 1pc
IP Code	IP68
Packing Information	G.W: 19Kg Qty: 10pcs MEAS.: 460*370*805mm





High-Quality Preconnectorization

Pre-connectorized fiber optic solutions are considered a revolutionary breakthrough in the telecommunications market as they have transformed the deployment of fiber optic networks, introducing an efficient and cost-effective approach to installation and maintenance through new technologies and practices.

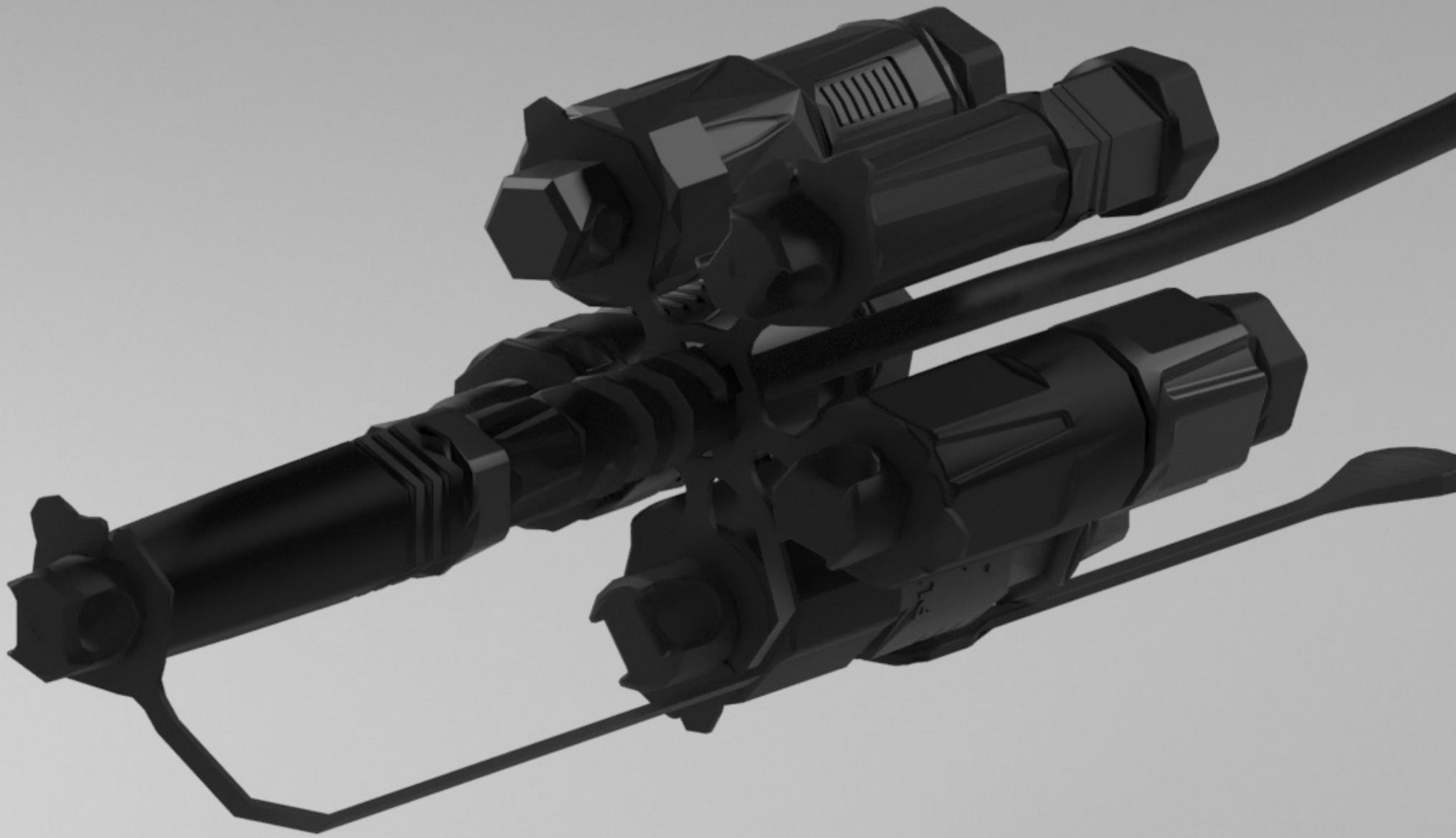
These solutions, which outperform conventional field connectorization methods, offer fast and hassle-free installation, exceptional reliability with guaranteed performance and minimal waste and errors during configuration.

Fibramérica is at the forefront of pre-connectorized fiber optic solutions, providing preconnectorized termination boxes, as well as state-of-the-art preconnectorized connectors and adapters designed

to streamline installation, improve performance and optimize cost-effectiveness.

With Fibramérica's pre-terminated solutions, the advantages are manifold. The increased reliability is due to the consistent quality of the connectors and the impeccable alignment between connector and fiber. In addition, the flexibility of these solutions allows them to be tailored to the precise requirements of the application, thus reducing installation time and, consequently, labor and equipment costs.

By partnering with Fibramérica, organizations gain access to a complete set of solutions that enable them to confidently navigate the dynamic fiber optic networking landscape.

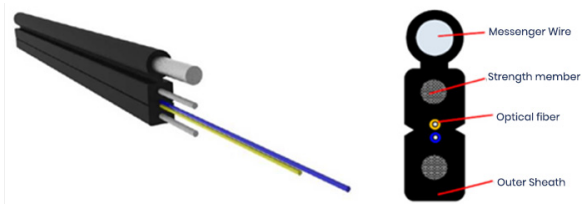




Main Features

- Connector type: SC, type UPC or APC
- Cable type: flat or round drop cable
- Fiber type: G.657A1, G.657A2 or G.657B3
- Compatibility with other brands of adapters: No
- Function: Connection to end user.

** The cable is configured according to the project requirement. Meaning sheath type, tensile members, flammability rating, etc.



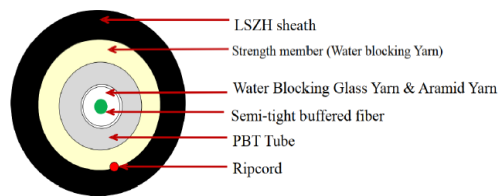
Preconnectorized Flat Drop Cable with Standard SC Connectors



Main Features

- Connector type: SC/APC
- Cable type: 5mm round cable
- Fiber type: G.657A1, G.657A2 or G.657B3
- Compatibility with other brand adapters: Yes
- Function: Interconnection between nap boxes

** The cable is configured according to the project requirement. Meaning sheath type, tensile members, flammability rating, etc.



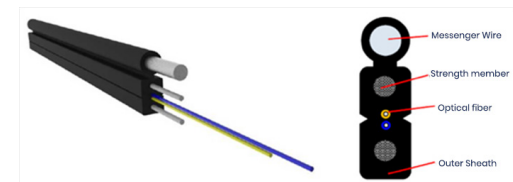
Round Preconnectorized Cable with Bayonet Connectors



Main Features

- Connector type: SC/APC
- Cable type: flat cable 2*5mm
- Fiber type: G.657A1, G.657A2 or G.657B3
- Compatibility with other brand adapters: Yes
- Function: Connection with end user.

** The cable is configured according to the project requirement. Meaning sheath type, tensile members, flammability rating, etc.



Preconnectorized Flat Drop Cable with Mini SC Connectors



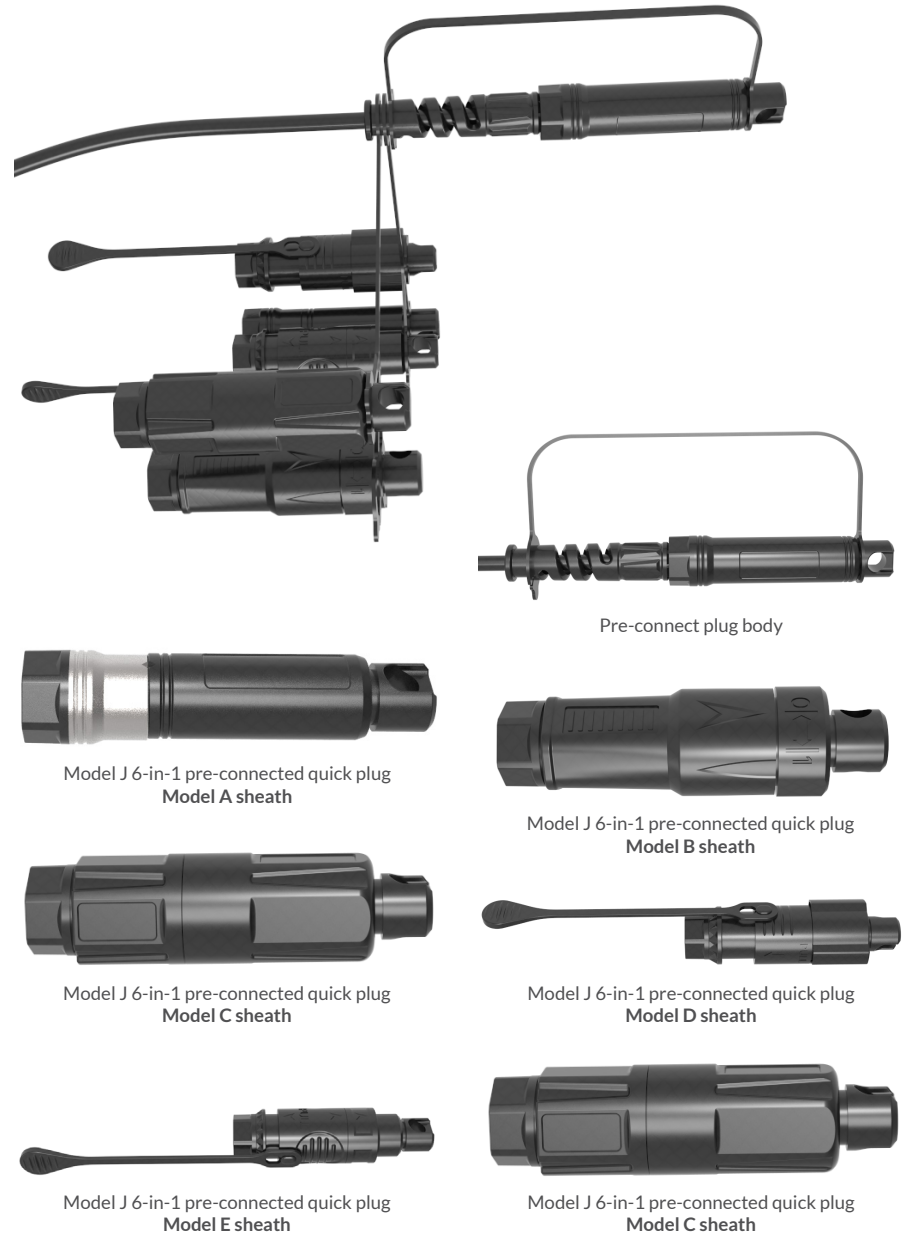
Fibramérica's hybrid connector is a development that consists of a main body, where the SC/APC type connector is installed (complies with IEC61754-4), and different adapters that act as translators to provide compatibility with other solutions present in the market.

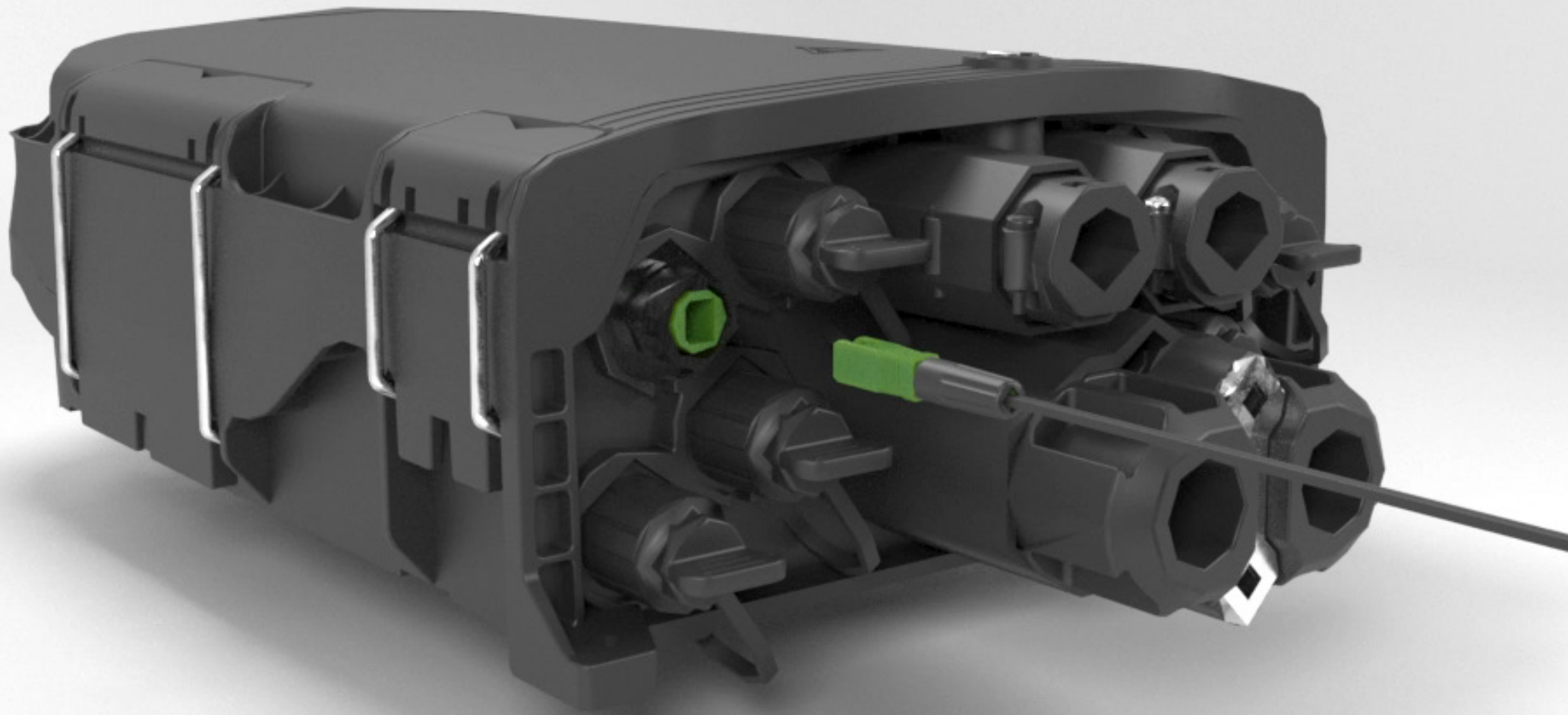
Its design is prepared to withstand the different outdoor environmental conditions, to resist external agents such as water, dust and corrosion. In addition, it is assembled directly at the factory, facilitating installation time and reducing margins of error in the field.

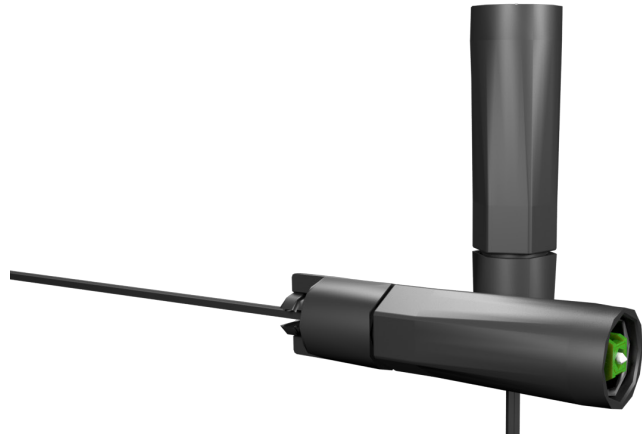
The hybrid connector is a more cost-effective solution for implementing pre-connectorized fiber optic networks, in addition to increasing deployment speed. It allows compatibility with the main ruggedized adapters on the market. It can be installed on 5mm round cables and figure 8 drop flat cables.

Specification	
Application cable	Round cable 5.0 mm, drop cable 2x3 mm and 2x5mm.
IL (dB)	≤0.15 dB (typical value) ≤0.3 dB (maximum value)
RL (dB)	≥60dB
Mechanical durability	50 times IL≤0.3dB
Tensile strength	≥200N
Operating temperature	-25°C+85°C
IP	68

General Schematic Diagram







The SIMPRECON preconnectorized solution is a technology that safeguards the external connection of cables with mechanical connectors, minimizing issues arising from processes associated with opening the box during installation and maintenance work. Through a system of protective covers, connection points are shielded from external elements, ensuring that the cable maintains optimal tension. Its robust plastic structure and UV protection offer features that enable it to withstand the environmental conditions of outdoor installations. The SIMPRECON solution can accommodate both flat and round drop cables. Adapters are available in black, gray, or colorful options (upon request).



FAB-COSU-001



FAB-COSU-002



FAB-COSU-003



FAB-COSU-001



FAB-COSU-004



FAB-COSU-002



FAB-COSU-003





FIBRAMÉRICA

FIBRAMÉRICA | Míngqíng Fíbramerica Technology Co., Ltd
No 42, Baijin East Road, Baijin Industrial Park,
Baizhong Town, Míngqíng County, Fuzhou, Fujian, China
Phone: +86 18621754882

Office in America

Rua Arthur Max Dóse, 153, Sala 1302
Balneário Camboriú - Brazil - Phone: (+55) 47 2033 2231
Contact: comercial@fibramerica.com