



FIBRAMÉRICA
MINQING TANCOME TECHNOLOGY LTDA



FAB-PRECON

Preconnectorized solutions



FIBRAMÉRICA

MINQING TANCOME TECHNOLOGY LTDA

Complete solutions for the intelligent development of fiber optic networks

Minqing Tancome Technology, under its trade name FIBRAMÉRICA, is one of the leading global companies dedicated to the design, development, manufacture, distribution and marketing of advanced optical connectivity solutions. We work allied to major players in the telecommunications market such as operators, distributors and importers installers worldwide, either as OEM or under our brand.

It has its headquarters located in Fuzhou, Fujian, China, with commercial offices in Shanghai and Ningbo. It also has direct commercial units in America, located in Brazil, where all commercial and technical support is provided in Spanish through its engineers and specialists in the sector. This expansion not only demonstrates its global vision, but also reflects its commitment to localized customer service, providing commercial and technical assistance in the same time zone and language as our customers.

On its path to excellence, FIBRAMÉRICA has adopted a continuous focus on process improvement, the integration of emerging technologies and the implementation of effective communication strategies. Its dedication translates into competitive pricing, efficient production times and comprehensive support, from the manufacturing process to the transportation of products.

By adhering to the most rigorous international quality norms and standards, such as ISO9001, it ensures that each of its products meets the quality and functionality expectations of the most demanding customers.

With a forward-looking vision, FIBRAMÉRICA concentrates its efforts in the development and adaptation of new products, adjusted to the specificities and needs of each project, covering from the initial conception phase to the final production.





Preconnectorized solution

FAB-PRECON

In the dynamic world of telecommunications, efficiency and speed are crucial. Preconnectorized solutions have emerged as the future, transforming the industry through new technologies that enable faster, more reliable and more economical installations. Since labor for an FTTx installation can represent up to 70% of the final cost, the preconnectorized solution is vital to reduce the complexity and time required to perform these tasks.

These solutions eliminate the need for expensive equipment and fiber fusion experts, reducing the margin for human error and ensuring accuracy in deployment. In this transformative scenario, Fibramérica leads with the FAB-PRECON line, a range designed to adapt to the specific needs of each operator. Modularity and customization are the premises of this innovation.

The FAB-PRECON preconnectorized cable system redefines the installation experience. It neutralizes environmental adversities and offers pre-certified and ready-to-use components, simplifying the process to simple cleaning and inspection steps.

Choosing FAB-PRECON means betting on efficiency, quality, and state-of-the-art technology. With advantages such as cost reduction, accelerated expansion, robustness in optical networks and a clear competitive advantage, this solution responds to the emerging demands of the sector. In addition, it minimizes technical failures and contributes to bridging the digital divide.

Preconnectorized solution

FAB-PRECON

Fibramérica's FAB-PRECON line offers an alternative that ranges from termination boxes to pre-connectorized cables, offering speed and reliability in fiber optic projects. Thanks to a focus on research and development, this line is constantly evolving, ensuring an adequate response to each project and guaranteeing an intelligent investment for the future of telecommunications.

Advantages of the FAB-PRECON system:

- Agility and economy: Reduction of installation time, minimizing labor hours and failures associated with maintenance.
- Operational efficiency: Reduction of expenses associated with the implementation and care of the optical network.
- Ease of implementation and expansion: FAB-PRECON solutions enable efficient connections in different types of networks, speeding up project implementation.
- Assured quality: Compliance with international standards, guaranteeing optical and mechanical parameters of all components.
- Strategic competitiveness: Allowing organizations to differentiate themselves and plan visionary investments.









EVOCON

Designed for Tomorrow. Crafted for Today

EVOCON boxes, developed by Fibramérica, represent a quantum leap in preconnectorized solutions. They are meticulously designed to offer more efficient installation and maintenance, and as a result, offer a notable reduction in operating expenses. This improvement is due, in part, to advanced engineering and robust construction.

The use of premium materials, combined with an IP68 level of protection, positions EVOCON enclosures as a preeminent choice for FTTx distribution networks. This heavy-duty composition makes them ideal for a variety of environments, giving them unmatched versatility compared to solutions from other vendors.

Aesthetically, the EVOCON design goes beyond mere visual presentation. It embodies a philosophy that amalgamates functionality and aesthetics, allowing them to blend harmoniously into urban, industrial or residential environments. In addition, the surface texture also acts as a barrier against obvious marks and wear.

From a technical perspective, the EVOCON line is diversified into two models: one with 8 pre-connectorized ports and the other with 16. They are constructed with a highly durable PP material, which guarantees resistance against external agents such as humidity, water and wear and tear over time. Each of these models offers versatile mounting options and comes equipped with IP68 protection.

Each EVOCON unit is supplied with essential accessories, further optimizing the installation process. The EVOCON line not only represents the future of fiber optics, but also exemplifies how innovation and excellence can coexist in perfect harmony. It is imperative to explore these next-generation pre-connectorized solutions.

EVOCON

Designed for Tomorrow. Crafted for Today

Item	Specifications	
	EVOCON-8	EVOCON-16
External dimension(mm)	347*192*135	347*192*158
Installation hole position(mm)	285*165	285*165
Color	Black	Black
Size and quantity of optical cable hole	1 oval optical cable entry, 2 branch optical cable entries and 8 pre-connected adapters	1 oval optical cable entry, 2 branch optical cable entries and 16 pre-connected adapters
Fusion capacity(Max)	96	96
	64	64
	100	100
Micro PLC Splitter	1x2	1x2
	1x4	1x4
	1x8	1x8
	--	1x16
Fiber cable diameter of the uncut pass through port(mm)	Φ18	Φ18
Fiber cable dimension of branch cable port (mm)	Φ14	Φ14
IP protection level	IP68	IP68
Flammability	HB(Conventional)	HB(Conventional)
Neutral salt spray test (NSS)	48 h	48 h



EVOCON-8



EVOCON-16



PRECONNECTORIZED TERMINATION BOX

FAB-HGT-2Y

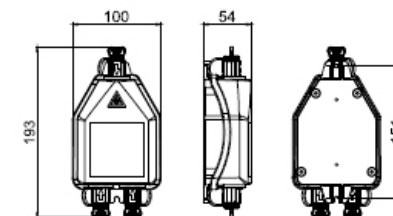
This preconnectorized box, designed for unbalanced network topologies, offers a unique design for easy installation and expansion. The FAB-HGT-2Y box is compact, hermetic, and adaptable with various splitters (PLC or FTB), meeting different project needs.

Constructed from high-quality black plastic, the box provides a space for labels or QR codes and features an IP68 protection rating, ensuring durability and resilience in various working environments.

Main features

- Advanced structure design, easy to operate and reasonable routing.
- Material: PP
- Moisture-proof, water-proof, dust-proof, anti-aging.
- Protection level up to IP68.
- 3 pre-connected adapters.
- Installation method: pole mount, antenna mount, wall mount, hand hole, man hole.

Specifications	
L*W*H (mm)	193*100*54
Material	PP
Max Splicing Capacity (core)	2
Max Input (mm)	/
Max Output (mm)	--
Max Adapter (PCS)	3 (mini SC)
PLC Splitter (PCS)	1*2 PLC
IP Code	IP68
Packing Information	G.W: 6.5Kg Qty: 20pcs 450*240*3850mm



PRECONNECTORIZED TERMINATION BOX

FAB-HGT-4DY



Main features

- The bottom shell and the upper cover are fixed with screws, removable.
- Material: PP.
- Protection level up to IP68.
- Moisture proof, waterproof, dust-proof, anti-aging
- 1 PG13.5 waterproof joint, 4 pre-connected adapters.
- Installation method: wall-mounted, pole-mounted, aerial-mounted

www.fibramerica.com

Specifications	
Material	PP
L*W*H (mm)	213*101*82
Max Splicing Capacity (core)	12
Max Input (mm)	/
Max Output (mm)	- -
Max Adapter (PCS)	5 (mini SC)
PLC Splitter (PCS)	1*4
IP code	IP68
Packing Information	G.W.:25KG QTY:40PCS MEAS.:460*460*515MM



PRECONNECTORIZED TERMINATION BOX

FAB-HGT-4DY-1



Main features

- The bottom shell and the upper cover are fixed with screws, removable.
- Material: PP.
- Protection level up to IP68.
- Moisture proof, waterproof, dust-proof, anti-aging.
- 1 cable entry, 4 pre-connected adapters.
- Installation method: wall-mounted, pole-mounted, aerial-mounted.

Specifications	
Material	PP
L*W*H (mm)	202*101*82
Max Splicing Capacity (core)	12
Max Input (mm)	12
Max Output (mm)	/
Max Adapter (PCS)	4 (mini SC)
PLC Splitter (PCS)	1*4 PLC
IP code	IP68
Packing Information	G.W.:25KG QTY:40PCS MEAS.: 510*460*515mm



PRECONNECTORIZED TERMINATION BOX

FAB-HGT-4DY-2



Main features

- Total enclosed structure, be in nice shape.
- Material is PP
- Wet-proof, water-proof, dust-proof, anti-aging.
- Protection level up to IP68.
- Cable, pigtails, patch cords are running through own path without disturbing each other.
- Distribution panel can be flipped up, feeder cable can be placed by express port.
- Wall-mounted or poled-mounted.

Specifications	
Material	PP
L*W*H (mm)	235*101*82
Max Splicing Capacity (core)	12
Max Input (mm)	14
Max Output (mm)	/
Max Adapter (PCS)	4 (mini SC)
PLC Splitter (PCS)	1*4 PLC
IP code	IP68
Packing Information	G.W.:25KG QTY:40PCS MEAS.: 510*460*515mm



PRECONNECTORIZED TERMINATION BOX

FAB-HGT-4X



Main features

- The bottom shell and the upper cover are fixed with screws,removable.
- Material: PP. Protection level up to IP68.
- Moisture proof, waterproof, dust-proof, anti-aging.
- 1 PG11 waterproof joint, 4 pre-connected adapters.
- Installation method: wal-mounted, pole-mounted, aerial-mounted

Specifications	
Material	PP+GF
L*W*H (mm)	182*138*78
Max Splicing Capacity (core)	12
Max Input (mm)	11
Max Output (mm)	/
Max Adapter (PCS)	4 (mini SC)
PLC Splitter (PCS)	1*4 PLC
IP code	IP68
Packing Information	G.W.:9KG QTY:20PCS MEAS.:425*310*560mm



PRECONNECTORIZED TERMINATION BOX

FAB-HGT-8X-A



Main features

- I Advanced structure design.
- 12 Material: PP or PC+ABS.
- g Moisture proof, waterproof, dust-proof, anti-aging.
- 4 Protection level up to IP65.
- 53 silicone plugs for incoming and outgoing cables and 8 pre connected adapters.
- B Installation method: pole-mounted, aerial-mounted, wall-mounted.

www.fibramerica.com

Specifications	
Material	PC+ABS/PP
L*W*H (mm)	281*177*109
Max Splicing Capacity (core)	36
Max Input (mm)	Φ8~14
Max Output (mm)	- -
Max Adapter (PCS)	8 (mini SC)
PLC Splitter (PCS)	1*8
IP code	IP65
Packing Information	G.W.:12KG QTY:10PCS MEAS.:400*310*615mm



PRECONNECTORIZED TERMINATION BOX

MINIBOX68-10



Main features

- Totally enclosed structure.
- Material: PP.
- Moisture proof, waterproof, dust-proof, anti-aging.
- Protection level IP68.
- Clamping, splicing, fixation, storage and distribution of feeder cable and drop cable are integrated.
- The internal configuration is 1 * 2 FTB + 1 * 8 PLC splitter
- Installation method: wall-mounted, pole-mounted, aerial-mounted.

Specifications	
Material	PP
L*W*H (mm)	179*171*66
Max Splicing Capacity (core)	--
Max Input (mm)	--
Max Output (mm)	--
Max Adapter (PCS)	10 (minisc)
PLC Splitter (PCS)	1*2FBT+1*8PLC/1*9PLC
IP code	IP68
Packing Information	G.W.:28.1KG QTY:40PCS MEAS.:810*410*510mm



PRECONNECTORIZED TERMINATION BOX

MINIBOX68-9



Main features

- Totally enclosed structure.
- Material: PP.
- Moisture proof, waterproof, dust-proof, anti-aging.
- Protection level IP68.
- Clamping, splicing, fixation, storage and distribution of feeder cable and drop cable are integrated.
- The internal configuration is 1 * 8 PLC splitter.
- Pole-mounted, aerial-mounted, wall-mounted.

www.fibramerica.com

Specifications	
Material	PP
L*W*H (mm)	179*171*66
Max Splicing Capacity (core)	--
Max Input (mm)	--
Max Output (mm)	--
Max Adapter (PCS)	9(mini SC)
PLC Splitter (PCS)	1*8PLC
IP code	IP68
Packing Information	G.W.:28.1KG QTY:40PCS MEAS.:810*410*510mm



PRECONNECTORIZED TERMINATION BOX

FAB-HGT-8DY



Main features

- The bottom shell and the upper cover are fixed with screws, removable.
- Material: PP.
- Moisture proof, waterproof, dust-proof, anti-aging.
- Protection level up to IP68.
- The interior is equipped with 1x2 FTB splitter+ 1x8 PLC splitter or 1x8 PLC splitter.....
- Installation method: pole-mounted, aerial-mounted, wall-mounted.

Specifications	
Material	PP
L*W*H (mm)	264*100*66
Max Splicing Capacity (core)	12
Max Input (mm)	--
Max Output (mm)	- -
Max Adapter (PCS)	10(minisc)
PLC Splitter (PCS)	1*2FBT+ 1*8PLC/1*9PLC
IP code	IP68
Packing Information	G.W.:17KG QTY:20PCS MEAS.:440*330*460mm



PRECONNECTORIZED TERMINATION BOX

FAB-HGT-8K



Main features

- Advanced structure design.
- Material: PP.
- Moisture proof, waterproof, dust-proof, anti-aging.
- Protection level up to IP68.
- 1 oval optical cable entry, 8 pre-connected adapters, or 1 round optical cable entry, 9 pre-connected adapters, 4 types of tray are optional, and even 2 types of tray can be mixed installation.
- Pole-mounted, aerial-mounted, wall-mounted.

www.fibramerica.com

Specifications	
Material	PP+GF
L*W*H (mm)	270*217*102
Max Splicing Capacity (core)	96
Max Input (mm)	2*(Φ18)
Max Output (mm)	- -
Max Adapter (PCS)	8 (minisc)
PLC Splitter (PCS)	1/8*4
IP code	IP68
Packing Information	G.W.:17.8KG QTY:10PCS MEAS.:460*290*570mm



PRECONNECTORIZED TERMINATION BOX

AB-HGT-8K-1



Main features

- Advanced structure design.
- Material: PP.
- Moisture proof, waterproof, dust-proof, anti-aging.
- Protection level up to IP68.
- 1 PG13.5 waterproof joint, 9 pre-connected adapters
- Pole-mounted, aerial-mounted, wall-mounted.

Specifications	
Material	PP+GF
L*W*H (mm)	270*218*102
Max Splicing Capacity (core)	96
Max Input (mm)	12
Max Output (mm)	/
Max Adapter (PCS)	9 (mini SC)
PLC Splitter (PCS)	1*8 PLC / 1*16 PLC
IP code	IP65
Packing Information	G.W.:17.8KG QTY:10PCS MEAS.:460*290*570mm



PRECONNECTORIZED TERMINATION BOX

FAB-HGT-8K-4



Main features

- Advanced structure design.
- Material: PP.
- Moisture proof, waterproof, dust-proof, anti-aging.
- Protection level up to IP68.
- 1 oval optical cable entry, 8 pre-connected adapters, or 1 round optical cable entry, 9 pre-connected adapters, 4 types of tray are optional, and even 2 types of tray can be mixed installation.
- Pole-mounted, aerial-mounted, wall-mounted.

Specifications	
Material	PP+GF
L*W*H (mm)	270*218*102
Max Splicing Capacity (core)	96
Max Input (mm)	/
Max Output (mm)	/
Max Adapter (PCS)	13 (mini SC)
PLC Splitter (PCS)	1*4 PLC + 1*8 PLC
IP code	IP68
Packing Information	G.W.:17.8KG QTY:10PCS MEAS.:460*290*570mm



PRECONNECTORIZED TERMINATION BOX

PROBOX68-8A-PRE



Main features

- Advanced structure design.
- Material: PP or PC+ABS.
- Moisture proof, waterproof, dust-proof, anti-aging.
- Protection level up to IP68
- 9 pre-connected adapters
- Installation method: pole-mounted, aerial-mounted, wall-mounted

Specifications	
Material	PC+ABS/PP
L*W*H (mm)	264*182*82
Max Splicing Capacity (core)	2
Max Input (mm)	--
Max Output (mm)	--
Max Adapter (PCS)	9
PLC Splitter (PCS)	1/8 PLC
IP code	IP68
Packing Information	G.W.:15KG QTY:10PCS MEAS.:410*315*510mm



PRECONNECTORIZED TERMINATION BOX

PROBOX68-8A-PRE1



Main features

- Advanced structure design.
- Material: PP or PC+ABS.
- Moisture proof, waterproof, dust-proof, anti-aging.
- Protection level up to IP68
- 1 oval optical cable entry
- Installation method: pole-mounted, aerial-mounted, wall-mounted

www.fibramerica.com

Specifications	
Material	PC+ABS/ABS/PP
L*W*H (mm)	264*182*84
Max Splicing Capacity (core)	2
Max Input (mm)	12
Max Output (mm)	--
Max Adapter (PCS)	8 (minisc)
PLC Splitter (PCS)	1/8PLC
IP code	IP68
Packing Information	G.W.:15KG QTY:10PCS MEAS.:410*315*510mm



PRECONNECTORIZED TERMINATION BOX

PROBOX68-8PRE



Main features

- The bottom shell and the upper cover are fixed with screws, removable.
- Material: PP.
- Protection level up to IP68.
- Moisture proof, waterproof, dust-proof, anti-aging.
- 1 oval optical cable entry, 2 branch optical cable entries and 8 pre-connected adapters.
- Various types of splice trays are available.
- Installation method: wall-mounted, pole-mounted, aerial-mounted.

Specifications	
Material	PP+GF
L*W*H (mm)	377*255*122
Max Splicing Capacity (core)	136
Max Input (mm)	18
Max Output (mm)	/
Max Adapter (PCS)	8 (minisc)
PLC Splitter (PCS)	1*8 or 1*16
IP code	IP68
Packing Information	G.W.:25KG QTY:8PCS MEAS.:540*405*540mm



PRECONNECTORIZED TERMINATION BOX

PROBOX68-8PRE-A



Main features

- Advanced structure design, easy operation and reasonable routing.
- Material: PP or PC+ABS.
- Moisture proof, waterproof, dust-proof, anti-aging.
- Protection level up to IP68.
- 1 oval optical cable entry, 2 branch optical cable entries and 8 pre-connected adapters.
- Various types of splice trays are available.
- Installation method: pole-mounted, aerial-mounted, wall-mounted

www.fibramerica.com

Specifications	
Material	PC+ABS/PP
L*W*H (mm)	377*225*122
Max Splicing Capacity (core)	108
Max Input (mm)	18
Max Output (mm)	18
Max Adapter (PCS)	8(minisc)
PLC Splitter (PCS)	1*8 or 1*16
IP code	IP68
Packing Information	G.W.:25KG QTY:8PCS MEAS.:500*405*555mm



PRECONNECTORIZED TERMINATION BOX

PROBOX68-8PRE



Main features

- The bottom shell and the upper cover are fixed with sews, removable.
- Material: PO*ABS.
- Protection level up to IPES.
- Moisture proof, waterproof, dust-proof, anti-aging.
- 1 oval optical cable entry, 2 branch optical cable entries and 5 pre-connected adapters.
- Various types of splice trays are available.
- Installation method: wall-mounted, pole-mounted, serial-mounted.

Specifications	
Material	PC+ABS/ABS
L*W*H (mm)	319*207*98
Max Splicing Capacity (core)	136
Max Input (mm)	2*(Ø18)
Max Output (mm)	/
Max Adapter (PCS)	8 (minisc)
PLC Splitter (PCS)	1x8 / 1x16
IP code	IP65
Packing Information	G.W: 14 Kg Qty: 10pcs MEAS: 450*360*630mm



PRECONNECTORIZED TERMINATION BOX

FAB-HGT-8SX-A



Main features

- The bottom shell and the upper cover are fixed with sews, removable.
- Material: PC*ABS.
- Protection level up to IP68
- Moisture proof, waterproof, dust-proof, anti-aging.
- 1 oval optical cable entry, 2 branch optical cable entries and 8 pre-connected adapters.
- Various types of splice trays are available.
- Installation method: wall-mounted, pole-mounted, serial-mounted.

Specifications	
Material	PC+ABS/ABS
L*W*H (mm)	350*200*98
Max Splicing Capacity (core)	136
Max Input (mm)	Φ18
Max Output (mm)	/
Max Adapter (PCS)	8 (mini SC)
PLC Splitter (PCS)	- -
IP code	IP68
Packing Information	G.W.:16KG QTY:10PCS MEAS.:450*380*630mm



PRECONNECTORIZED TERMINATION BOX

FAB-HGT-8SX-1



Main features

- The bottom shell and the upper cover are fixed with sews, removable.
- Material: PC*ABS.
- Protection level up to IP68
- Moisture proof, waterproof, dust-proof, anti-aging.
- 1 oval optical cable entry, 2 branch optical cable entries and 8 pre-connected adapters.
- Various types of splice trays are available.
- Installation method: wall-mounted, pole-mounted, serial-mounted.

Specifications	
Material	PC+ABS/ABS
L*W*H (mm)	319*207*98
Max Splicing Capacity (core)	136
Max Input (mm)	2* Φ 18
Max Output (mm)	/
Max Adapter (PCS)	8 (mini SC)
PLC Splitter (PCS)	1*8 PLC / 1*16 PLC
IP code	IP65
Packing Information	G.W.:16KG QTY:10PCS MEAS.:450*380*630mm



PRECONNECTORIZED TERMINATION BOX

FAB-HGT-8T



Main features

- Advanced structure design, easy operation and reasonable routing.
- Material: PP
- Moisture proof, waterproof, dust-proof, anti-aging.
- Protection level up to IP68.
- 1 oval optical cable entry and 9 pre-connected adapters.
- Installation method: pole-mounted, aerial-mounted, wall-mounted.

Specifications	
Material	PC+ABS/ABS/PP+GF
L*W*H (mm)	201*180*135
Max Splicing Capacity (core)	32
Max Input (mm)	Φ8 ~ Φ14
Max Output (mm)	--
Max Adapter (PCS)	9 (mini SC)
PLC Splitter (PCS)	1*8 PLC
IP code	IP68
Packing Information	G.W.:11KG QTY:10PCS
	MEAS.:440*300*770mm



PRECONNECTORIZED TERMINATION BOX

FAB-HGT-8X



Main features

- Advanced structure design, easy operation and reasonable routing.
- Material: PC+ABS.
- Moisture proof, waterproof, dust-proof, anti-aging.
- Protection level up to IP65.
- 8 in / out cable holes, 8 pre connected adapters. Installation method: pole-mounted, aerial- mounted, wall-mounted.
- It can be equipped with drop cable storage tray to meet the storage of 50 meters 5mm round cable.

Specifications	
Material	PC+ABS/ABS/PP+GF
L*W*H (mm)	329*195*120
Max Splicing Capacity (core)	68
Max Input (mm)	5-17
Max Output (mm)	--
Max Adapter (PCS)	8 (mini SC)
PLC Splitter (PCS)	1*8 PLC
IP code	IP65
Packing Information	G.W.:16KG QTY:10PCS
	MEAS.:450*370*685mm



PRECONNECTORIZED TERMINATION BOX

FAB-HGT-8X-16



Main features

- Advanced structure design, easy operation and reasonable routing.
- Material: PC+ABS.
- Moisture proof, waterproof, dust-proof, anti-aging. Protection level up to IP65.
- 8 in / out cable holes, 16 pre connected adapters. Installation method: pole-mounted, aerial-mounted, wall-mounted

www.fibramerica.com

Specifications	
Material	PC+ABS/ABS
L*W*H (mm)	345*195*120
Max Splicing Capacity (core)	68
Max Input (mm)	Φ5-Φ17
Max Output (mm)	--
Max Adapter (PCS)	16(mini sc)
PLC Splitter (PCS)	1/8*2
IP code	IP65
Packing Information	G.W.:17KG QTY:10PCS
	MEAS.:450*380*685mm



PRECONNECTORIZED TERMINATION BOX

FAB-HGT-8Y



Main features

- Advanced structure design, easy operation and reasonable routing.
- Material: PC+ABS.
- Moisture proof, waterproof, dust-proof, anti-aging.
- Protection level up to IP65.
- 1 oval optical cable entry, 2 branch optical cable entries and 8 pre-connected adapters
- Installation method: pole-mounted, wall-mounted.

Specifications	
Material	PC+ABS/ABS
L*W*H (mm)	356*216*89
Max Splicing Capacity (core)	60
Max Input (mm)	Φ15
Max Output (mm)	--
Max Adapter (PCS)	8(mini sc)
PLC Splitter (PCS)	1*8PLC
IP code	IP65
Packing Information	G.W.:20.3KG QTY:10PCS
	MEAS.:490*375*545mm



PRECONNECTORIZED TERMINATION BOX

FAB-HGT-8Y-1



Main features

- Advanced structure design, easy operation and reasonable routing.
- Material: PC+ABS.
- Moisture proof, waterproof, dust-proof, anti-aging.
- Protection level up to IP65.
- 1 oval optical cable entry, 9 pre-connected adapters
- Installation method: pole-mounted, wall-mounted.

www.fibramerica.com

Specifications	
Material	PC+ABS/ABS
L*W*H (mm)	356*216*89
Max Splicing Capacity (core)	60
Max Input (mm)	Φ15
Max Output (mm)	--
Max Adapter (PCS)	9 (mini sc)
PLC Splitter (PCS)	1*8PLC
IP code	IP65
Packing Information	G.W.:20.3KG QTY:10PCS
	MEAS.:490*375*545mm



PRECONNECTORIZED TERMINATION BOX

FAB-HGT-8Y-2



Main features

- Advanced structure design, easy operation and reasonable routing.
- Material: PC+ABS.
- Moisture proof, waterproof, dust-proof, anti-aging.
- Protection level up to IP65.
- 1 PG 13.5 waterproof joint, 9 pre-connected adapters
- Installation method: pole-mounted, wall-mounted, aerial-mounted.

Specifications	
Material	PC+ABS/ABS
L*W*H (mm)	290*181*83
Max Splicing Capacity (core)	36
Max Input (mm)	12
Max Output (mm)	--
Max Adapter (PCS)	9 (mini sc)
PLC Splitter (PCS)	1*8PLC / 1*8 cassette type PLC splitter
IP code	IP65
Packing Information	G.W.:12.9KG QTY:10PCS
	MEAS.:410*320*570mm



PRECONNECTORIZED TERMINATION BOX

FAB-HGT-8ZY-1



Main features

- The bottom shell and the upper cover are fixed with screws, removable.
- Material: PP.
- Protection level up to IP68.
- Moisture proof, waterproof, dust-proof, anti-aging.
- 1 PG16 waterproof joint, 8 pre-connected adapters.
- Installation method: wall-mounted, pole-mounted, aerial-mounted.

www.fibramerica.com

Specifications	
Material	PP
L*W*H (mm)	280*173*74
Max Splicing Capacity (core)	12
Max Input (mm)	Φ14
Max Output (mm)	--
Max Adapter (PCS)	8 (mini sc)
PLC Splitter (PCS)	1*8PLC
IP code	IP68
Packing Information	G.W.:17KG QTY:20PCS
	MEAS.: 600*390*490mm



PRECONNECTORIZED TERMINATION BOX

FAB-HGT-8Y-2



Main features

- The bottom shell and the upper cover are fixed with screws,removable.
- Material: PP.
- Moisture proof, waterproof, dust-proof, anti-aging.
- Protection level up to IP68.
- 1 fiber optica cable inlet, 8 pre-connected adapters
- Installation method: pole-mounted, aerial-mounted, wall-mounted.

Specifications	
Material	PP
L*W*H (mm)	294*173*74
Max Splicing Capacity (core)	12
Max Input (mm)	Φ14
Max Output (mm)	--
Max Adapter (PCS)	8 (mini sc)
PLC Splitter (PCS)	1*8 PLC
IP code	IP68
Packing Information	G.W.:17KG QTY:20PCS
	MEAS.: 600*390*490mm



PRECONNECTORIZED TERMINATION BOX

FAB-HGT-8ZY-3



Main features

- The bottom shell and the upper cover are fixed with screws,removable.
- Material: PP.
- Moisture proof, waterproof, dust-proof, anti-aging.
- Protection level up to IP68.
- 1 PG 16 waterproof joint, 12 pre-connected adapters.
- Installation method: pole-mounted, aerial-mounted, wall-mounted.

Specifications	
Material	PP
L*W*H (mm)	280*173*74
Max Splicing Capacity (core)	12
Max Input (mm)	Φ14
Max Output (mm)	--
Max Adapter (PCS)	12 (mini sc)
PLC Splitter (PCS)	1*4 PLC + 1*8PLC
IP code	IP68
Packing Information	G.W.:17KG QTY:20PCS
	MEAS.: 600*390*490mm



PRECONNECTORIZED TERMINATION BOX

FAB-HGT-8ZY-4



Main features

- The bottom shell and the upper cover are fixed with screws,removable.
- Material: PP.
- Moisture proof, waterproof, dust-proof, anti-aging.
- Protection level up to IP68.
- 1 fiber optic cable inlet, 12 pre-connected adapters.
- Installation method: pole-mounted, aerial-mounted, wall-mounted.

Specifications	
Material	PP
L*W*H (mm)	294 *173*74
Max Splicing Capacity (core)	12
Max Input (mm)	Φ14
Max Output (mm)	--
Max Adapter (PCS)	12 (mini sc)
PLC Splitter (PCS)	1*4 PLC + 1*8PLC
IP code	IP68
Packing Information	G.W.:17KG QTY:20PCS
	MEAS.: 600*390*490mm





PRECONNECTORIZED TERMINATION BOX

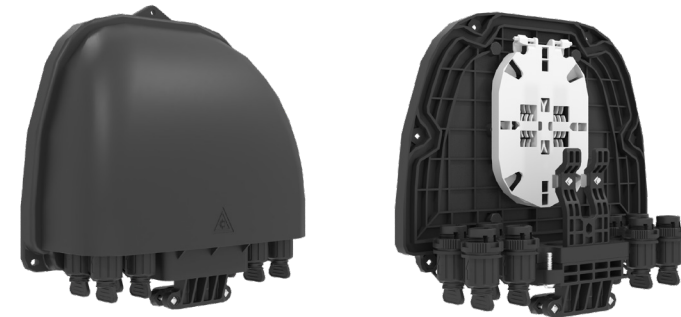
FAB-HGT-8BYK



Main features

- The bottom shell and the upper cover are fixed with screws,removable.
- Material: PP.
- Moisture proof, waterproof, dust-proof, anti-aging.
- Protection level up to IP65.
- The interior is equipped with 1x8 PLC splitter.....
- Installation method: pole-mounted, aerial-mounted, wall-mounted.

Specifications	
Material	PP plastic or PC+ABS
L*W*H (mm)	220*217*79mm
Max Splicing Capacity (core)	12
Max Input (mm)	8
Max Output (mm)	2 (oval port)
Max Adapter (PCS)	8 (mini SC)
PLC Splitter (PCS)	1*8PLC
IP code	IP68
Packing Information	G.W.:16.5KG QTY:20PCS
	MEAS.:440*360*460mm



PRECONNECTORIZED TERMINATION BOX

MINIBOX68-12



Main features

- The bottom shell and the upper cover are fixed with screws, removable.
- Material: PP.
- Moisture proof, waterproof, dust-proof, anti-aging.
- Protection level up to IP68.
- The interior is equipped with 1x4 PLC splitter+ 1x8 PLC splitter or 1x8 PLC splitter.....
- Installation method: pole-mounted, aerial-mounted, wall-mounted.

www.fibramerica.com

Specifications	
Material	PP
L*W*H (mm)	210*199*78
Max Splicing Capacity (core)	/
Max Input (mm)	--
Max Output (mm)	--
Max Adapter (PCS)	12 (mini sc)
PLC Splitter (PCS)	1*4PLC + 1*8PLC
IP code	IP68
Packing Information	G.W.:17KG QTY:20PCS
	MEAS.: 450*430*450mm



PRECONNECTORIZED TERMINATION BOX

MINIBOX68-12-1



Main features

- The bottom shell and the upper cover are fixed with screws, removable.
- Material: PP.
- Moisture proof, waterproof, dust-proof, anti-aging.
- Protection level up to IP68.
- The interior is equipped with 1x4 PLC splitter+ 1x8 PLC splitter or 1x8 PLC splitter.....
- Installation method: pole-mounted, aerial-mounted, wall-mounted.

Specifications	
Material	PP
L*W*H (mm)	290*199*78
Max Splicing Capacity (core)	/
Max Input (mm)	--
Max Output (mm)	--
Max Adapter (PCS)	9 (mini sc)
PLC Splitter (PCS)	1*8 PLC
IP code	IP68
Packing Information	G.W.:17 KG QTY: 20PCS
	MEAS.:450*430*450mm



PRECONNECTORIZED TERMINATION BOX

MINIBOX68-12-2



Main features

- The bottom shell and the upper cover are fixed with screws, removable.
- Material: PP.
- Moisture proof, waterproof, dust-proof, anti-aging.
- Protection level up to IP68.
- The interior is equipped with 1x4 PLC splitter+ 1x8 PLC splitter or 1x8 PLC splitter.....
- Installation method: pole-mounted, aerial-mounted, wall-mounted.

www.fibramerica.com

Specifications	
Material	PP
L*W*H (mm)	210*199*78
Max Splicing Capacity (core)	/
Max Input (mm)	--
Max Output (mm)	--
Max Adapter (PCS)	10(mini sc)
PLC Splitter (PCS)	1*2FTB + 1*8 PLC
IP code	IP68
Packing Information	G.W.:17KG QTY:20PCS
	MEAS.: 450*430*450mm



PRECONNECTORIZED TERMINATION BOX

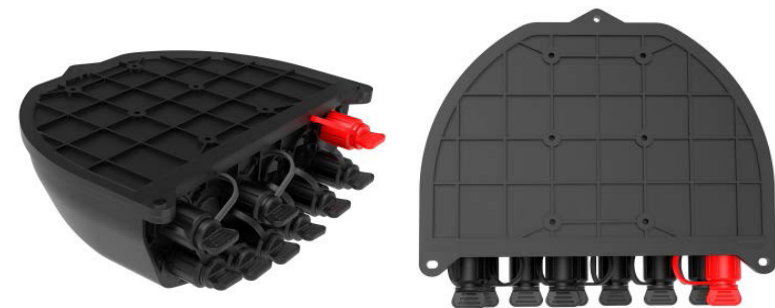
FAB-HGT-12BY



Main features

- The bottom shell and upper cover are welded by hot plate welding, which is not detachable..
- Material: PP.
- Moisture proof, waterproof, dust-proof, anti-aging.
- Protection level up to IP68.
- The interior is equipped with 1x4 PLC splitter + 1x8 PLC splitter or 1x8 PLC splitter.
- Installation method: pole-mounted, aerialmounted, wall-mounted.

Specifications	
Material	PP
L*W*H (mm)	197*175*77
Max Splicing Capacity (core)	12
Max Input (mm)	--
Max Output (mm)	--
Max Adapter (PCS)	12 (mini SC)
PLC Splitter (PCS)	1*4 PLC + 1*8 PLC
IP code	IP68
Packing Information	G.W.:17KG QTY:20PCS
	MEAS.:450*430*450mm



PRECONNECTORIZED TERMINATION BOX

FAB-HGT-12BY-1

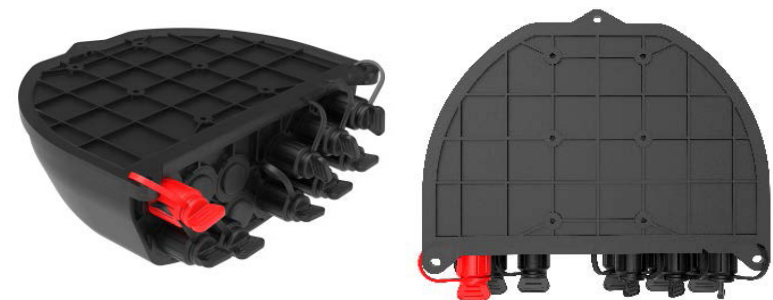


Main features

- The bottom shell and upper cover are welded by hot plate welding, which is not detachable..
- Material: PP.
- Moisture proof, waterproof, dust-proof, anti-aging.
- Protection level up to IP68.
- The interior is equipped with 1x4 PLC splitter + 1x8 PLC splitter or 1x8 PLC splitter.
- Installation method: pole-mounted, aerialmounted, wall-mounted.

www.fibramerica.com

Specifications	
Material	PP
L*W*H (mm)	197*175*77
Max Splicing Capacity (core)	/
Max Input (mm)	--
Max Output (mm)	--
Max Adapter (PCS)	9 (MINI SC)
PLC Splitter (PCS)	1*8PLC
IP code	IP68
Packing Information	G.W.:16.5KG QTY:20PCS
	MEAS.:440*360*460mm



PRECONNECTORIZED TERMINATION BOX

FAB-HGT-12DY



Main features

- The bottom shell and upper cover are welded by hot plate welding, which is not detachable..
- Material: PP.
- Moisture proof, waterproof, dust-proof, anti-aging.
- Protection level up to IP68.
- The interior is equipped with 1x4 PLC splitter + 1x8 PLC splitter or 1x8 PLC splitter.
- Installation method: pole-mounted, aerialmounted, wall-mounted.

Specifications	
Material	PP
L*W*H (mm)	363*153*107
Max Splicing Capacity (core)	56
Max Input (mm)	18
Max Output (mm)	--
Max Adapter (PCS)	14 (mini SC)
PLC Splitter (PCS)	1*4 PLC + 1*8PLC
IP code	IP68
Packing Information	G.W.:15KG QTY:10PCS
	MEAS.: 390*350*630mm



PRECONNECTORIZED TERMINATION BOX

FAB-HGT-12DY-1



Main features

- The bottom shell and upper cover are welded by hot plate welding, which is not detachable..
- Material: PP.
- Moisture proof, waterproof, dust-proof, anti-aging.
- Protection level up to IP68.
- The interior is equipped with 1x4 PLC splitter + 1x8 PLC splitter or 1x8 PLC splitter.
- Installation method: pole-mounted, aerialmounted, wall-mounted.

www.fibramerica.com

Specifications	
Material	PP
L*W*H (mm)	327*153*107
Max Splicing Capacity (core)	56
Max Input (mm)	Φ8-14
Max Output (mm)	/
Max Adapter (PCS)	14 (MINI SC)
PLC Splitter (PCS)	1*4 PLC + 1*8PLC
IP code	IP68
Packing Information	G.W.:13KG QTY:10PCS
	MEAS.: 360*350*630mm



PRECONNECTORIZED TERMINATION BOX

FAB-HGT-12DY-1

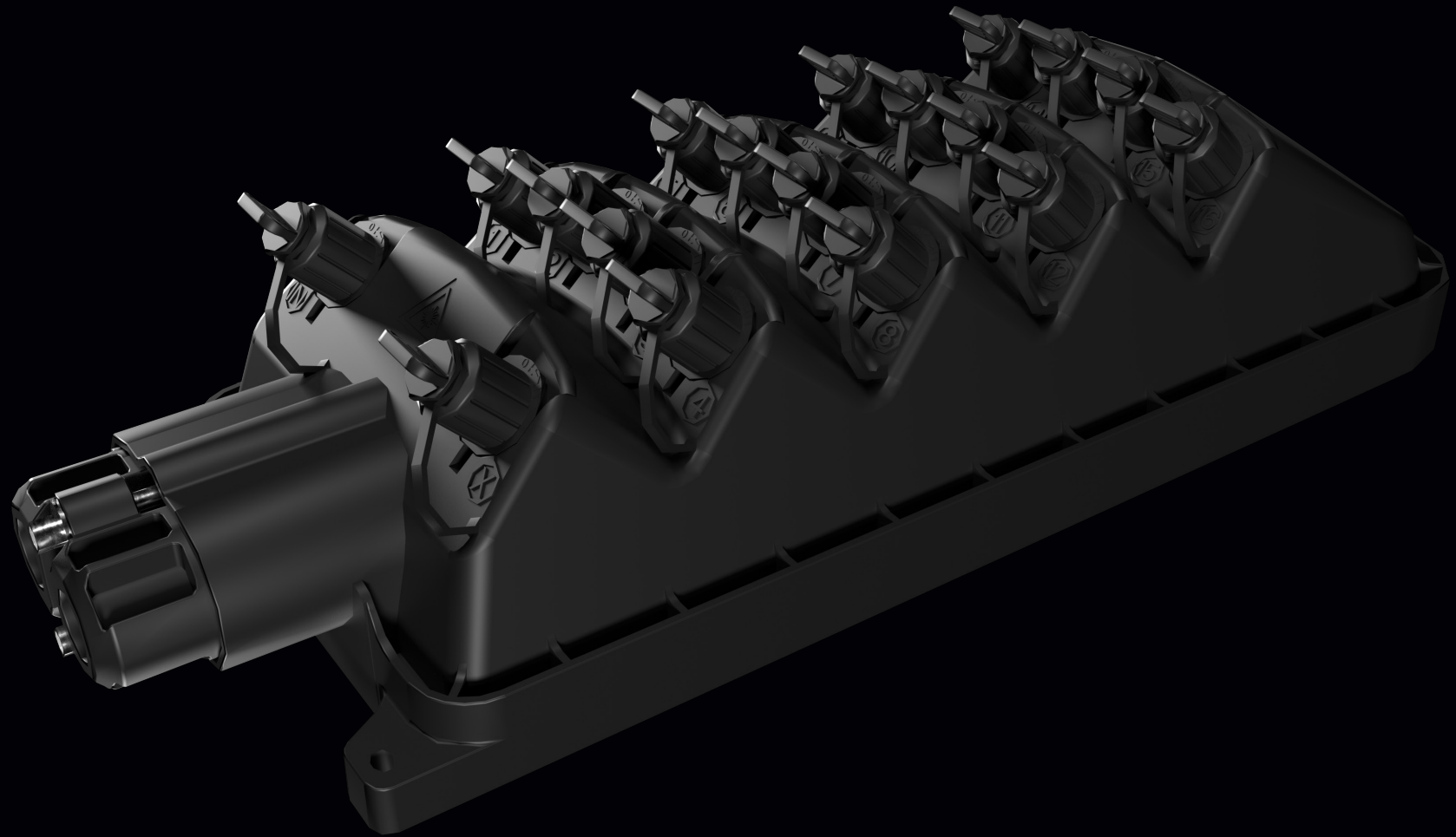


Main features

- The bottom shell and upper cover are welded by hot plate welding, which is not detachable..
- Material: PP.
- Moisture proof, waterproof, dust-proof, anti-aging.
- Protection level up to IP68.
- The interior is equipped with 1x4 PLC splitter + 1x8 PLC splitter or 1x8 PLC splitter.
- Installation method: pole-mounted, aerialmounted, wall-mounted.

Specifications	
Material	PP
L*W*H (mm)	353*153*107
Max Splicing Capacity (core)	56
Max Input (mm)	Φ16
Max Output (mm)	/
Max Adapter (PCS)	14 (MINI SC)
PLC Splitter (PCS)	1*4 PLC + 1*8PLC
IP code	IP68
Packing Information	G.W.:13KG QTY:10PCS
	MEAS.: 380*350*630mm





PRECONNECTORIZED TERMINATION BOX

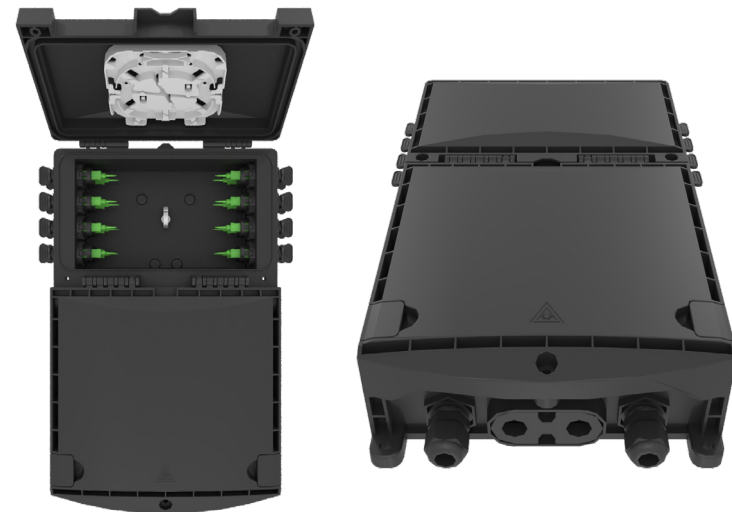
FAB-HGT-16DX



Main features

- The bottom shell and the upper cover are fixed with screws, removable.
- Material: PC+ABS.
- Moisture proof, waterproof, dust-proof, anti-aging.
- 1 oval optical cable entry, 2 branch optical cable entries and 12 pre-connected adapters
- Protection level up to IP65.
- Installation method: wall-mounted, pole-mounted, aerial-mounted.

Specifications	
Material	PC+ABS/ABS
L*W*H (mm)	254*213*117
Max Splicing Capacity (core)	36
Max Input (mm)	Φ16
Max Output (mm)	/
Max Adapter (PCS)	12*(mini sc)
PLC Splitter (PCS)	1*8 PLC / 1*8 Cassette type PLC splitter
IP code	IP65
Packing Information	G.W.:13.5KG QTY:10PCS
	MEAS.:480*290*710mm



PRECONNECTORIZED TERMINATION BOX

FAB-HGT-16F-B



Main features

- Total enclosed structure.
- Material: PP
- Wet-proof, water-proof, dust-proof, anti-aging
- Protection level up to IP68
- Clamping for feeder cable and drop cable, fiber splicing, fixation, storage, distribution...etc all in one.
- Wall-mounted,poled-mounted or Aerial, suitable for both indoor and outdoor uses.

Specifications	
Material	PP
L*W*H (mm)	388*242*128
Max Splicing Capacity (core)	200
Max Input (mm)	18
Max Output (mm)	2*3~Φ7
Max Adapter (PCS)	4 (mini SC)
PLC Splitter (PCS)	1*8 PLC / 1*16PLC
IP code	IP68
Packing Information	G.W.:23KG QTY:6PCS
	MEAS.:530*425*470mm



PRECONNECTORIZED TERMINATION BOX

FAB-HGT-16F-C



Main features

- Total enclosed structure.
- Material: PP
- Wet-proof, water-proof, dust-proof, anti-aging
- Protection level up to IP68
- Clamping for feeder cable and drop cable, fiber splicing, fixation, storage, distribution...etc all in one.
- Wall-mounted,poled-mounted or Aerial, suitable for both indoor and outdoor uses.

Specifications	
Material	PP
L*W*H (mm)	389*242*128
Max Splicing Capacity (core)	200
Max Input (mm)	18
Max Output (mm)	2*3~Φ7
Max Adapter (PCS)	8 (mini SC)
PLC Splitter (PCS)	1*8 PLC / 1*16PLC
IP code	IP68
Packing Information	G.W.:23KG QTY:6PCS
	MEAS.:530*425*470mm



PRECONNECTORIZED TERMINATION BOX

PROBOX68-16PRE



Main features

- Advanced structure design, easy operation and reasonable routing.
- Material: PP .
- Moisture proof, waterproof, dust-proof, anti-aging.
- Protection level up to IP68.
- 1 oval optical cable entry, 2 branch optical cable entries and 16 pcs of household.
- Type splice trays optional.
- Installation method: pole-mounted, aerial- mounted, wall-mounted.

www.fibramerica.com

Specifications	
Material	PP
L*W*H (mm)	378*255*116
Max Splicing Capacity (core)	136
Max Input (mm)	Φ18
Max Output (mm)	/
Max Adapter (PCS)	16 (mini SC)
PLC Splitter (PCS)	1*8/1*16
IP code	IP68
Packing Information	G.W.:29KG QTY:8PCS
	MEAS.:540*405*620mm



PRECONNECTORIZED TERMINATION BOX

PROBOX68-16PRE-1



Main features

- Advanced structure design, easy operation and reasonable routing.
- Material: PP .
- Moisture proof, waterproof, dust-proof, anti-aging.
- Protection level up to IP68.
- 1 oval optical cable entry and 16 pcs pre-connected adapters
- 3 type splice trays optional.
- Installation method: pole-mounted, aerial- mounted, wall-mounted.

Specifications	
Material	PP
L*W*H (mm)	378*255*116
Max Splicing Capacity (core)	136
Max Input (mm)	Φ18
Max Output (mm)	/
Max Adapter (PCS)	16 (mini SC)
PLC Splitter (PCS)	1*8/1*16
IP code	IP68
Packing Information	G.W.:29KG QTY:8PCS
	MEAS.:540*405*620mm



PRECONNECTORIZED TERMINATION BOX

PROBOX68-16PRE



Main features

- Advanced structure design, easy operation and reasonable routing.
- Material: PP .
- Moisture proof, waterproof, dust-proof, anti-aging.
- Protection level up to IP68.
- 1 oval optical cable entry, 2 branch optical cable entries and 16 pcs of household.
- Type splice trays optional.
- Installation method: pole-mounted, aerial- mounted, wall-mounted.

Specifications	
Material	PP
L*W*H (mm)	378*255*136
Max Splicing Capacity (core)	108
Max Input (mm)	Φ18
Max Output (mm)	Φ18
Max Adapter (PCS)	16
PLC Splitter (PCS)	1*8/1*16
IP code	IP68
Packing Information	G.W.:29KG QTY:8PCS
	MEAS.:540*405*620mm



PRECONNECTORIZED TERMINATION BOX

PROBOX68-16PRE-1



Main features

- Advanced structure design, easy operation and reasonable routing.
- Material: PP .
- Moisture proof, waterproof, dust-proof, anti-aging.
- Protection level up to IP68.
- 1 oval optical cable entry and 16 pcs pre-connected adapters
- 3 type splice trays optional.
- Installation method: pole-mounted, aerial- mounted, wall-mounted.

Specifications	
Material	PP
L*W*H (mm)	378*255*116
Max Splicing Capacity (core)	108
Max Input (mm)	Φ18
Max Output (mm)	Φ18
Max Adapter (PCS)	16
PLC Splitter (PCS)	1*8/1*16
IP code	IP68
Packing Information	G.W.:27KG QTY:8PCS
	MEAS.:540*405*525mm



PRECONNECTORIZED TERMINATION BOX

FAB-HGT-16S

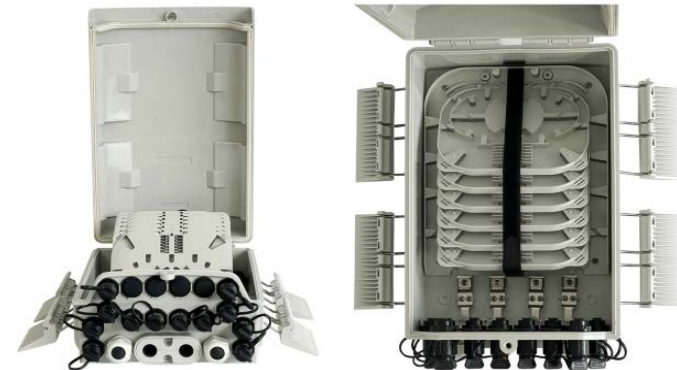


Main features

- Total enclosed structure. Material: PC+ABS.
- Wet-proof, water-proof, dust-proof, anti-aging. Protection level up to IP65.
- Cable, pigtails, patch cords are running through own path without disturbing each other.
- Wall-mounted or poled-mounted, suitable for both indoor and outdoor uses.

www.fibramerica.com

Specifications	
Material	PC+ABS/ABS
L*W*H (mm)	356*216*122
Max Splicing Capacity (core)	72
Max Input (mm)	14
Max Output (mm)	--
Max Adapter (PCS)	16 (mini SC)
PLC Splitter (PCS)	1*8
IP code	IP65
Packing Information	G.W.:21KG QTY:10PCS
	MEAS.:480*390*710mm



PRECONNECTORIZED TERMINATION BOX

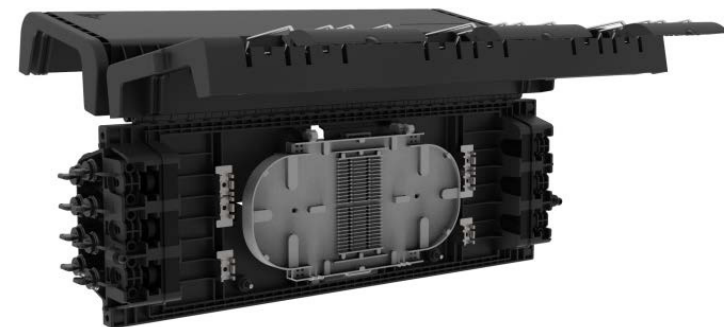
FAB-HGT-16SN



Main features

- Total enclosed structure.
- Material: PP.
- Wet-proof, water-proof, dust-proof, anti-aging.
- Protection level up to IP65.
- 6 Cable entries and 16 pre-connected adapters.
- Installation method: aerial-mounted.

Specifications	
Material	PC+ABS/ABS
L*W*H (mm)	445*181*118
Max Splicing Capacity (core)	48
Max Input (mm)	Φ14
Max Output (mm)	/
Max Adapter (PCS)	14
PLC Splitter (PCS)	1*8*2/1*16
IP code	IP65
Packing Information	G.W.:35KG QTY:10PCS
	MEAS.:590*410*700mm



PRECONNECTORIZED TERMINATION BOX

FAB-HGT-16SY

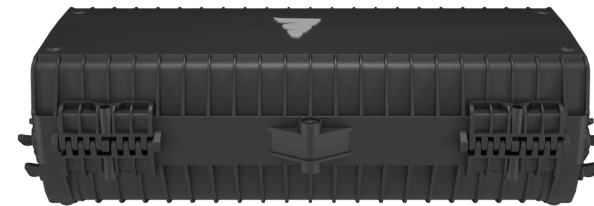


Main features

- Advanced structure design, easy operation and reasonable routing.
- Material: PP or PC+ABS.
- Moisture proof, waterproof, dust-proof, anti-aging.
- Protection level up to IP65.
- 6 Cable entries and 16 pre-connected adapters.
- Various types of splice trays are available.
- Installation method: pole-mounted, aerial-mounted, wall-mounted.

www.fibramerica.com

Specifications	
Material	PP / ABS+PC
L*W*H (mm)	360*160*117.6
Max Splicing Capacity (core)	84
Size and quantity of optical cable hole	6 Cable entries and 16 preconnected adapters
Micro PLC Splitter	1*8 PLC or 1*16 PLC
Fiber cable diameter of the uncut pass through port(mm)	Φ17
IP code	IP65
Packing Information	G.W.: 25KG QTY:8PCS
	MEAS.: 540*405*540mm



PRECONNECTORIZED TERMINATION BOX

FAB-HGT-16SX



Main features

- Advanced structure design, easy operation and reasonable routing.
- Material: PP or PC+ABS.
- Moisture proof, waterproof, dust-proof, anti-aging.
- Protection level up to IP65.
- 1 oval optical cable entry, 2 branch optical cable entries and 16 pre-connected adapters.
- 2 type splice trays optional.
- Installation method: pole-mounted, aerial mounted, wall-mounted.

Specifications	
Material	PC+ABS/PP
L*W*H (mm)	319*221*133
Max Splicing Capacity (core)	96
Max Input (mm)	Φ8~18
Max Output (mm)	/
Max Adapter (PCS)	16 (mini SC)
PLC Splitter (PCS)	1*8 / 1*16
IP code	IP65
Packing Information	G.W.:16KG QTY:10PCS
	MEAS.:480*350*805mm



PRECONNECTORIZED TERMINATION BOX

FAB-HGT-16SX-A



Main features

- Advanced structure design, easy operation and reasonable routing.
- Material: PP or PC+ABS.
- Moisture proof, waterproof, dust-proof, anti-aging.
- Protection level up to IP65.
- 1 oval optical cable entry, 2 branch optical cable entries and 16 pre-connected adapters. 2 type splice trays optional.
- Installation method: pole-mounted, aerial-mounted, wall-mounted.

www.fibramerica.com

Specifications	
Material	PC+ABS/PP
L*W*H (mm)	350*221*133
Max Splicing Capacity (core)	96
Max Input (mm)	Φ8~18
Max Output (mm)	Φ16
Max Adapter (PCS)	16
PLC Splitter (PCS)	1*8 and 1*16
IP code	IP65
Packing Information	G.W.:17KG QTY:10PCS
	MEAS.:480*380*805mm



PRECONNECTORIZED TERMINATION BOX

FAB-HGT-16X



Main features

- Advanced structure design, easy operation and reasonable routing. Material: PC+ABS.
- Moisture proof, waterproof, dust-proof, anti-aging.
- Protection level up to IP65.
- 8 in / out cable holes, 16 pre connected adapters.
- Installation method: pole-mounted, aerial-mounted, wall-mounted.

Specifications	
Material	PC+ABS/ABS
L*W*H (mm)	416*199*121
Max Splicing Capacity (core)	72
Max Input (mm)	Φ5~Φ17
Max Output (mm)	/
Max Adapter (PCS)	8 (mini SC) or 16 (mini SC)
PLC Splitter (PCS)	1*8 / 1*16
IP code	IP65
Packing Information	G.W.:23KG QTY:10PCS
	MEAS.:480*430*770mm



PRECONNECTORIZED TERMINATION BOX

FAB-HGT-16X-1

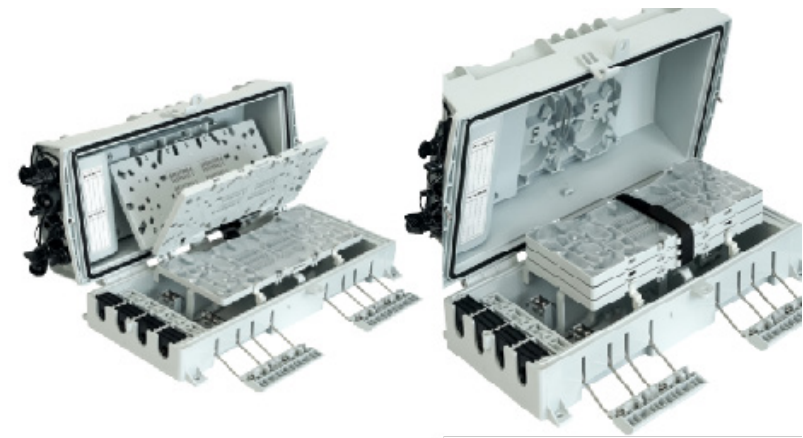


Main features

- Total enclosed structure.
- Material: PC+ABS.
- Wet-proof, water-proof, dust-proof, anti-aging.
- Protection level up to IP65.
- Cable, pigtails, patch cords are running through own path without disturbing each other.
- wall-mounted or poled-mounted, suitable for both indoor and outdoor uses.

www.fibramerica.com

Specifications	
Material	PC+ABS/PP
L*W*H (mm)	404*199*121
Max Splicing Capacity (core)	96
Max Input (mm)	Φ5~ Φ17
Max Output (mm)	--
Max Adapter (PCS)	8*(mini sc)
PLC Splitter (PCS)	1*8 PLC / 1*16
IP code	IP65
Packing Information	G.W.:23KG QTY:10PCS
	MEAS.:440*430*770mm



PRECONNECTORIZED TERMINATION BOX

FAB-HGT-16X-2



Main features

- Total enclosed structure. Material: PC+ABS.
- Wet-proof, water-proof, dust-proof, anti-aging. Protection level up to IP65.
- Cable, pigtails, patch cords are running through own path without disturbing each other.
- wall-mounted or poled-mounted, suitable for both indoor and outdoor uses

Specifications	
Material	PC+ABS/ABS/PP
L*W*H (mm)	398*199*183
Max Splicing Capacity (core)	160
Max Input (mm)	Φ7~15
Max Output (mm)	--
Max Adapter (PCS)	16*(mini sc)
PLC Splitter (PCS)	1*8 or 1*16
IP code	IP65
Packing Information	G.W.:19KG QTY:6PCS
	MEAS.:440*430*650mm



PRECONNECTORIZED TERMINATION BOX

FAB-HGT-16X-A



Main features

- Total enclosed structure.
- Material: PC+ABS.
- Wet-proof, water-proof, dust-proof, anti-aging.
- Protection level up to IP65.
- Cable, pigtails, patch cords are running through own path without disturbing each other.
- wall-mounted or poled-mounted, suitable for both indoor and outdoor uses.

www.fibramerica.com

Specifications	
Material	PP
L*W*H (mm)	430*196*139
Max Splicing Capacity (core)	144
Max Input (mm)	Φ5~16
Max Output (mm)	/
Max Adapter (PCS)	16 (mini SC)
PLC Splitter (PCS)	1*8 / 1*16 PLC
IP code	IP68
Packing Information	G.W.:26KG QTY:8PCS
	MEAS.:460*440*640mm



PRECONNECTORIZED TERMINATION BOX

FAB-HGT-16Y



Main features

- The bottom shell and the upper cover are fixed with screws, removable.
- Material: PC+ABS.
- Moisture proof, waterproof, dust-proof, anti-aging.
- Protection level up to IP65.
- 1 PG21 waterproof joint , 16 pre-connected adapters.
- Installation method: wall-mounted, pole-mounted, aerial-mounted.

Specifications	
Material	PC+ABS/ABS
L*W*H (mm)	256*213*117
Max Splicing Capacity (core)	36
Max Input (mm)	Φ18
Max Output (mm)	/
Max Adapter (PCS)	16 (mini sc)
PLC Splitter (PCS)	1*8 PLC / 1*8 Cassette type PLC splitter
IP code	IP65
Packing Information	G.W.:13.5KG QTY:10PCS
	MEAS.:480*290*710mm



PRECONNECTORIZED TERMINATION BOX

FAB-HGT-16Y-2



Main features

- The bottom shell and the upper cover are fixed with screws, removable.
- Material: PC+ABS.
- Moisture proof, waterproof, dust-proof, anti-aging.
- Protection level up to IP65.
- 18 pre-connected adapters.
- Installation method: wall-mounted, pole-mounted, aerial-mounted.

www.fibramerica.com

Specifications	
Material	PC+ABS/ABS
L*W*H (mm)	256*213*117
Max Splicing Capacity (core)	36
Max Input (mm)	Φ8~16
Max Output (mm)	/
Max Adapter (PCS)	16*(mini sc)
PLC Splitter (PCS)	1*8 PLC: 2pcs 1*8 Cassette type PLC splitter: 2pcs
IP code	IP65
Packing Information	G.W.:13.5KG QTY:10PCS
	MEAS.:480*290*710mm



PRECONNECTORIZED TERMINATION BOX

FAB-HGT-16Y-3

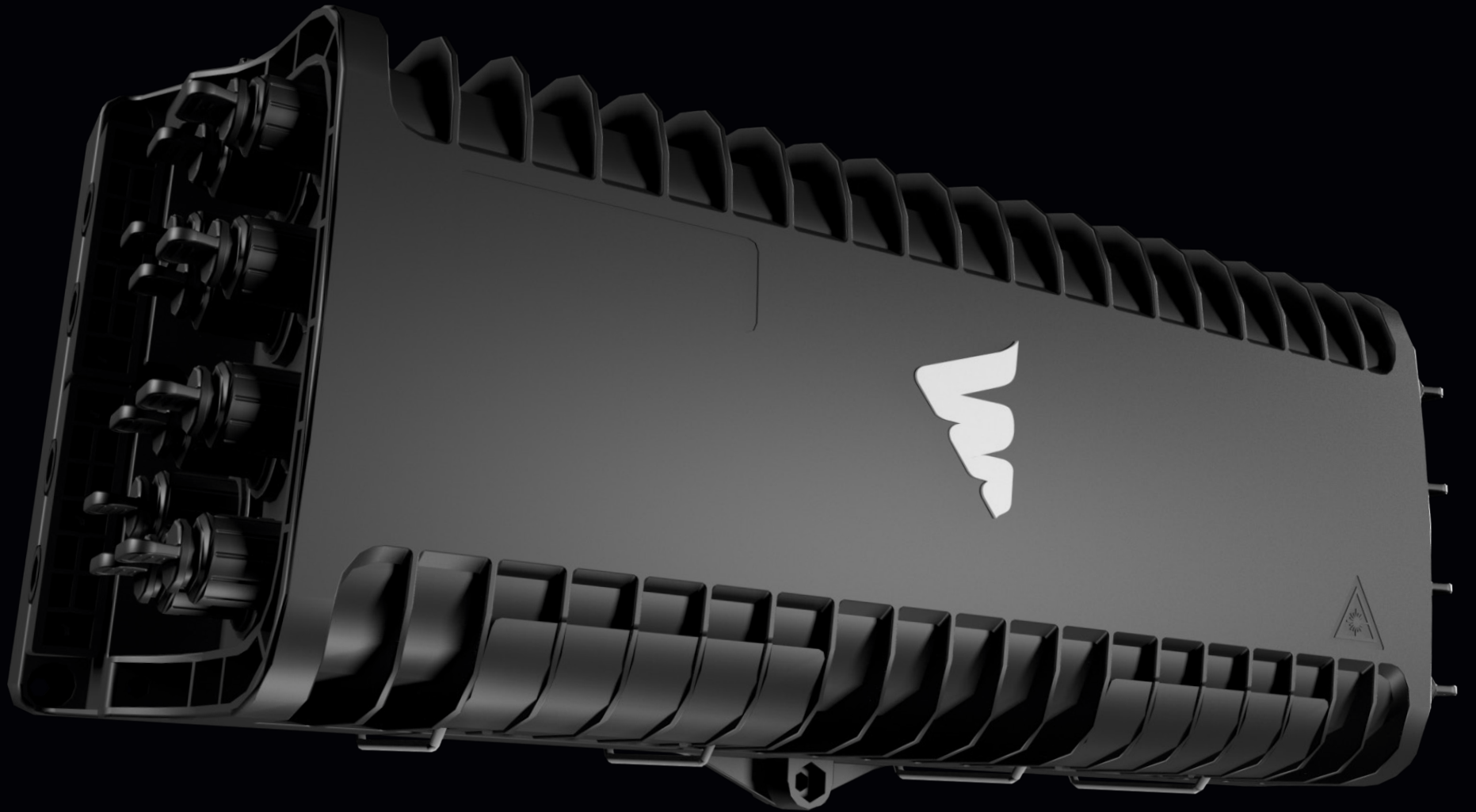


Main features

- The bottom shell and the upper cover are fixed with screws, removable.
- Material: PC+ABS.
- Moisture proof, waterproof, dust-proof, anti-aging.
- 1 oval optical cable entry, 2 branch optical cable entries and 12 pre-connected adapters
- Protection level up to IP65.
- Installation method: wall-mounted, pole-mounted, aerial-mounted.

Specifications	
Material	PC+ABS/ABS
L*W*H (mm)	254*213*117
Max Splicing Capacity (core)	36
Max Input (mm)	Φ16
Max Output (mm)	/
Max Adapter (PCS)	12*(mini sc)
PLC Splitter (PCS)	1*8 PLC / 1*8 Cassette type PLC splitter
IP code	IP65
Packing Information	G.W.:13.5KG QTY:10PCS
	MEAS.:480*290*710mm





PRECONNECTORIZED TERMINATION BOX

FAB-HGT-18X

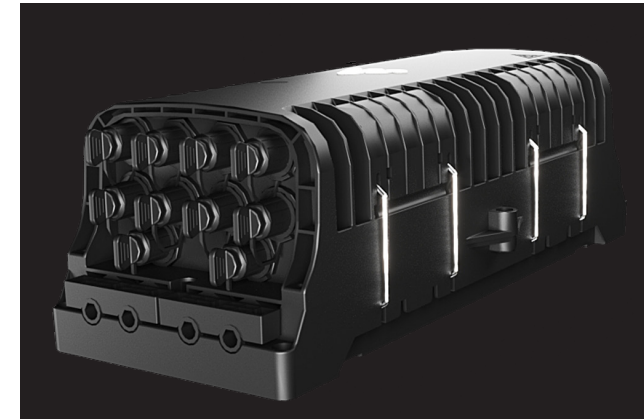
The FAB-HGT-18X box is a new version of Fibramérica’s linear terminal box models for preconnectorized networks. Its robust structure is designed for multiple applications in FTTx networks, from splicing in access networks, field termination of drop cables or preconnectorized networks.

Its mechanical ruggedized adapter technology and cable entry/exit port design streamline the connection and implementation of networks. It has a maximum capacity of 20 ruggedized adapters, which support the connection of ruggedized connectors and standard SC type connectors through the SIMPRECON solution, in addition to 6 trays of 24 fusions to allow up to 144 splices.

The IP68 environmental protection of the terminal allows its installation in both overhead and subway networks, either in chambers or directly buried.

Main features

- Advanced structure design, easy to operate and reasonable routing.
- Material: PP
- Moisture-proof, water-proof, dust-proof, anti-aging.
- Protection level up to IP68.
- 8 input/output cable holes, 18 pre-connected adapters.
- Inside can be equipped with FBT splitter 1x2 + PLC splitter 1x16.



INSTALLATION MODES

- Aerial installation
- Pole-mounted installation
- Wall-mounted installation

Item	Specifications
Body material	PC+ABS/ABS/PP
Material of metal accessories	High quality stainless steel
Outer dimensions	430*196*137.5 mm
Number of ports	16 ports (with possibility to expand to 20)
Number of splitters	1 splitter FBT 1x2 + 1 splitter PLC 1x16.
Degree of protection	IP68
Fusing capacity	144FO (6 trays of 24FO - double layer)

PRECONNECTORIZED TERMINATION BOX

MINIBOX68-18

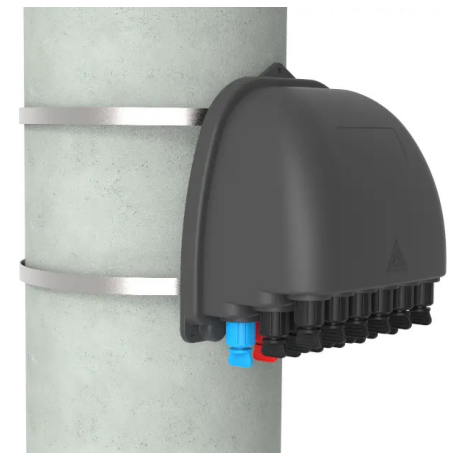


Main features

- The bottom shell and the upper cover are fixed with screws, removable.
- Material: PP.
- Moisture proof, waterproof, dust-proof, anti-aging.
- Protection level up to IP68.
- 18 pre-connected adapters.
- Installation method: wall-mounted, pole-mounted, aerial-mounted

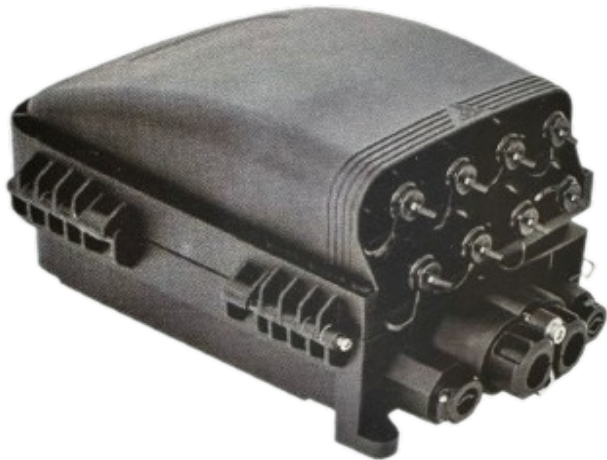
www.fibramerica.com

Specifications	
Material	PP
L*W*H (mm)	210*199*107
Max Splicing Capacity (core)	/
Max Input (mm)	/
Max Output (mm)	/
Max Adapter (PCS)	18*(mini sc)
PLC Splitter (PCS)	1*2 FTB + 1*16 PLC
IP code	IP68
Packing Information	G.W.: 19KG QTY:20PCS
	MEAS.: 460*440*640mm



PRECONNECTORIZED TERMINATION BOX

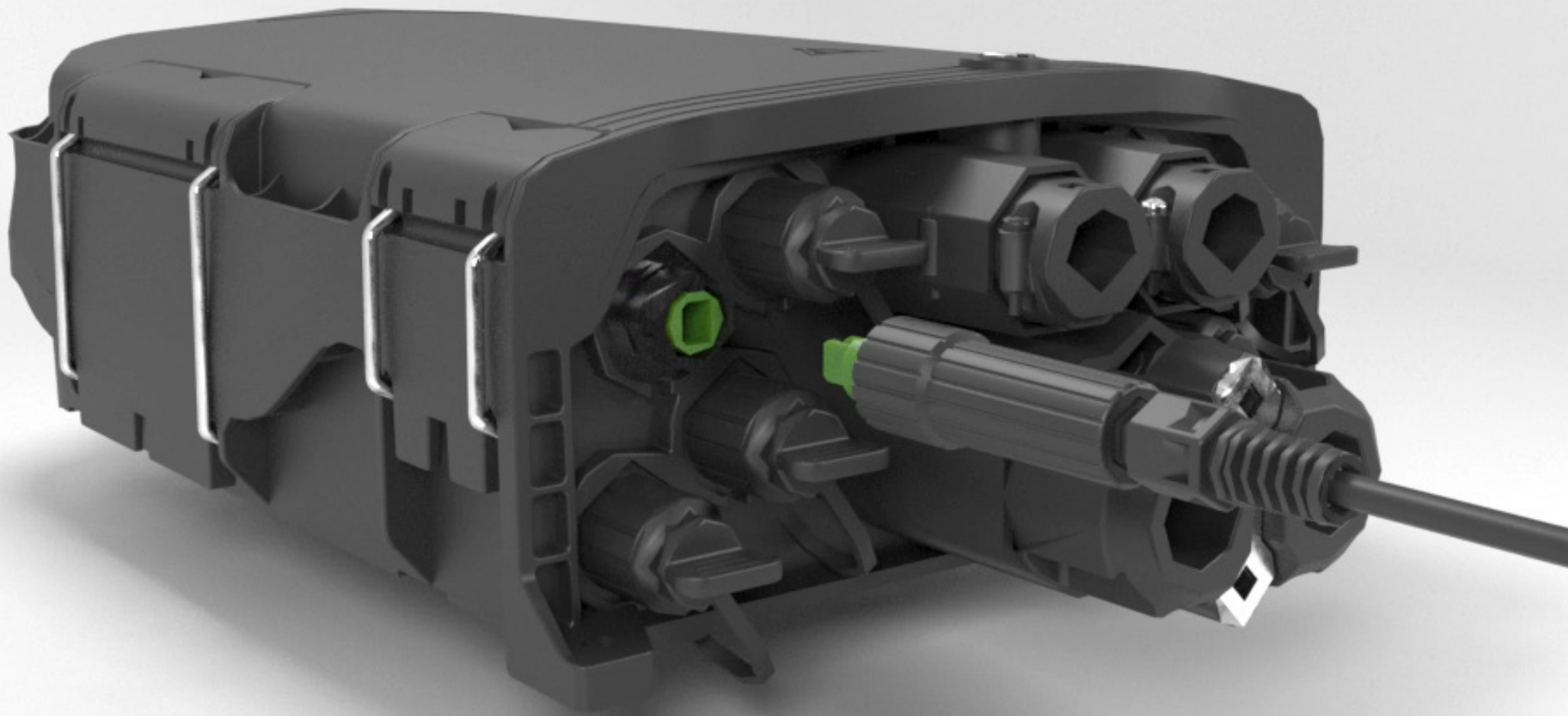
FAB-HGT-8F-PRE-001



Main features

- Advanced structure design, easy operation and reasonable routing.
- Material: PP. Protection level up to IP68.
- Moisture proof, waterproof, dust-proof, anti-aging
- 1 oval optical cable entry, 2 branch optical cable entries and 8 pre-connected adapters.
- Various types of splice trays are available.
- Installation method: pole-mounted, aerial-mounted, wall-mounted.

Specifications	
Material	PP
L*W*H (mm)	310*204*139
Max Splicing Capacity (core)	100
Max Input (mm)	Φ18
Max Output (mm)	/
Max Adapter (PCS)	8*(mini sc)
PLC Splitter (PCS)	1*4 PLC: 2pcs or 1*8 PLC: 1pc
IP code	IP68
Packing Information	G.W.:19KG QTY:10PCS
	MEAS.:460*370*805mm



PRE-CONNECT CONNECTOR AND ADAPTOR

HIGH-QUALITY PRECONNECTORIZATION SOLUTIONS

Pre-connectorized fiber optic solutions are considered a revolutionary breakthrough in the telecommunications market as they have transformed the deployment of fiber optic networks, introducing an efficient and cost-effective approach to installation and maintenance through new technologies and practices.

These solutions, which outperform conventional field connectorization methods, offer fast and hassle-free installation, exceptional reliability with guaranteed performance and minimal waste and errors during configuration.

Fibramérica is at the forefront of preconnectorized fiber optic solutions, providing preconnectorized termination boxes, as well as state-of-the-art preconnectorized connectors and adapters designed to streamline installation, improve performance and optimize cost-effectiveness.

With Fibramérica's pre-terminated solutions, the advantages are manifold. The increased reliability is due to the consistent quality of the connectors and the impeccable alignment between connector and fiber. In addition, the flexibility of these solutions allows them to be tailored to the precise requirements of the application, thus reducing installation time and, consequently, labor and equipment costs.

By partnering with Fibramérica, organizations gain access to a complete set of solutions that enable them to confidently navigate the dynamic fiber optic networking landscape.



PRE-CONNECT CONNECTOR AND ADAPTOR



PRECONNECTORIZED FLAT DROP CABLE WITH STANDARD SC CONNECTORS

- Connector type: SC, type UPC or APC
- Cable type: flat or round drop cable
- Fiber type: G.657A1, G.657A2 or G.657B3
- Compatibility with other brands of adapters: No
- Function: Connection to end user.

*** The cable is configured according to the project requirement. Meaning sheath type, tensile members, flammability rating, etc.*



ROUND PRECONNECTORIZED CABLE WITH BAYONET CONNECTORS

- Connector type: SC/APC
- Cable type: 5mm round cable
- Fiber type: G.657A1, G.657A2 or G.657B3
- Compatibility with other brand adapters: Yes
- Function: Interconnection between nap boxes

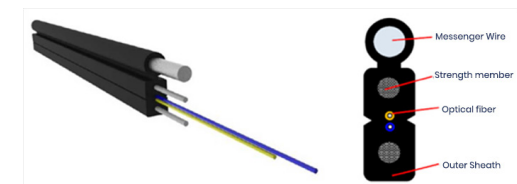
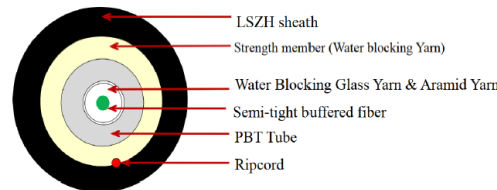
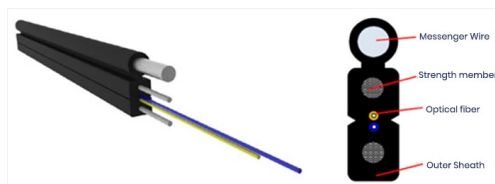
*** The cable is configured according to the project requirement. Meaning sheath type, tensile members, flammability rating, etc.*

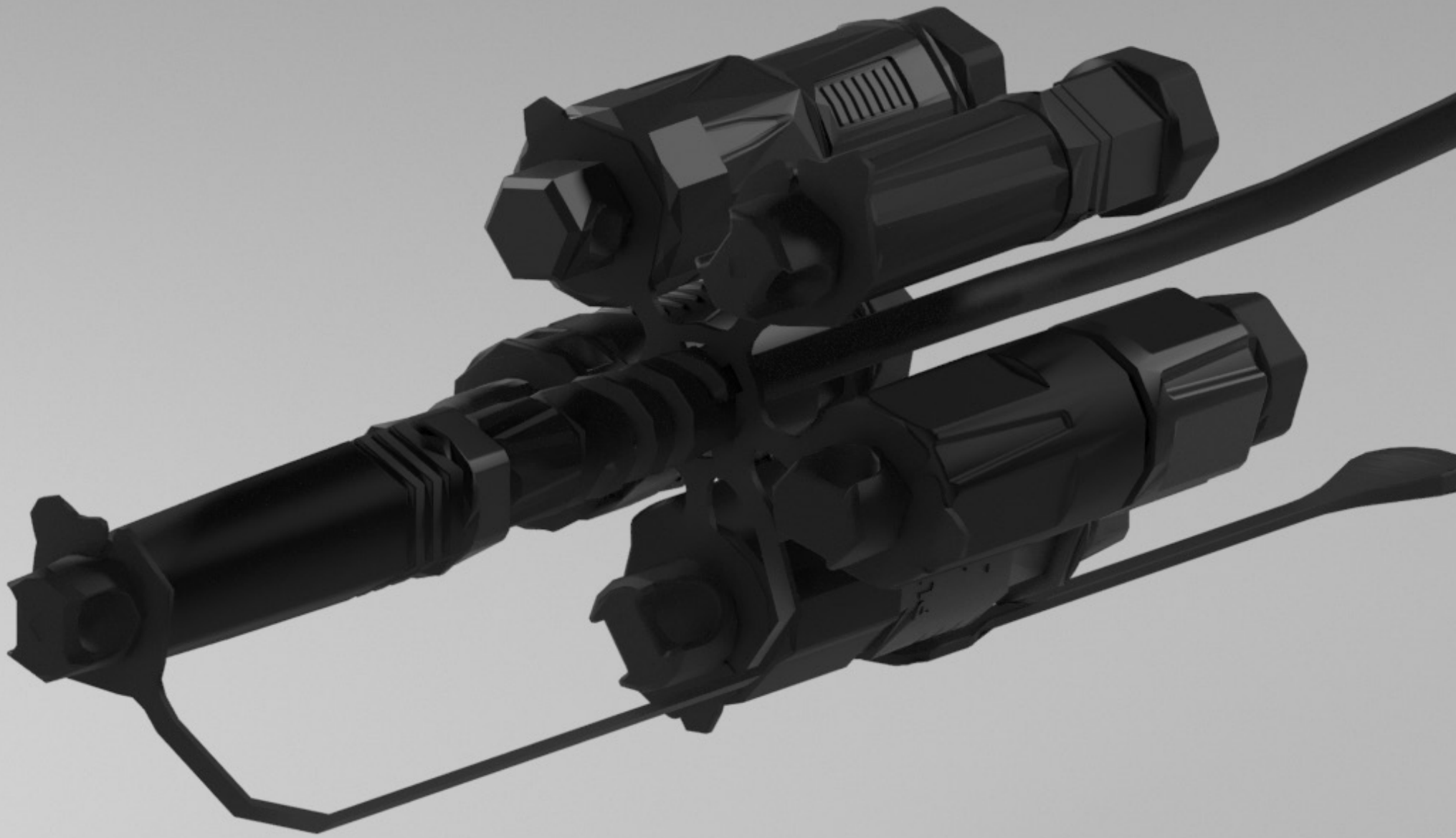


PRECONNECTORIZED FLAT DROP CABLE WITH MINI SC CONNECTORS

- Connector type: SC/APC
- Cable type: flat cable 2*5mm
- Fiber type: G.657A1, G.657A2 or G.657B3
- Compatibility with other brand adapters: Yes
- Function: Connection with end user.

*** The cable is configured according to the project requirement. Meaning sheath type, tensile members, flammability rating, etc.*





PRE-CONNECT CONNECTOR AND ADAPTOR

PRECONNECTORIZED HYBRID CONNECTOR

Fibramérica's hybrid connector is a development that consists of a main body, where the SC/APC type connector is installed (complies with IEC61754-4), and different adaptors that act as translators to provide compatibility with other solutions present in the market.

Its design is prepared to withstand the different outdoor environmental conditions, to resist external agents such as water, dust and corrosion. In addition, it is assembled directly at the factory, facilitating installation time and reducing margins of error in the field.

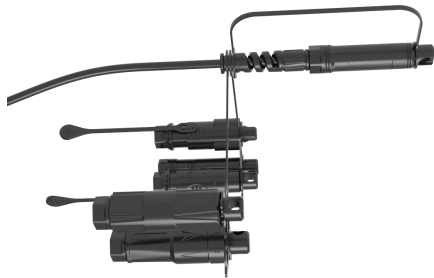
The hybrid connector is a more cost-effective solution for implementing pre-connectorized fiber optic networks, in addition to increasing deployment speed.

It allows compatibility with the main ruggedized adapters on the market. It can be installed on 5mm round cables and figure 8 drop flat cables.

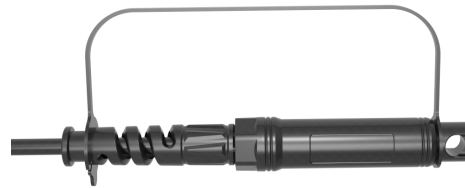
Application cable	Round cable 5.0 mm, drop cable 2x3 mm and 2x5mm.
IL (dB)	≤0.15 dB (typical value) ≤0.3 dB (maximum value)
RL (dB)	≥60dB
Mechanical durability	50 times IL≤0.3dB
Tensile strength	≥200N
Operating temperature	-25°C+85°C
IP	68



PRE-CONNECT CONNECTOR AND ADAPTOR



General schematic diagram



Pre-connect plug body



Model J 6-in-1 pre-connected quick plug - Model A sheath



Model J 6-in-1 pre-connected quick plug - Model B sheath



Model J 6-in-1 pre-connected quick plug - Model C sheath



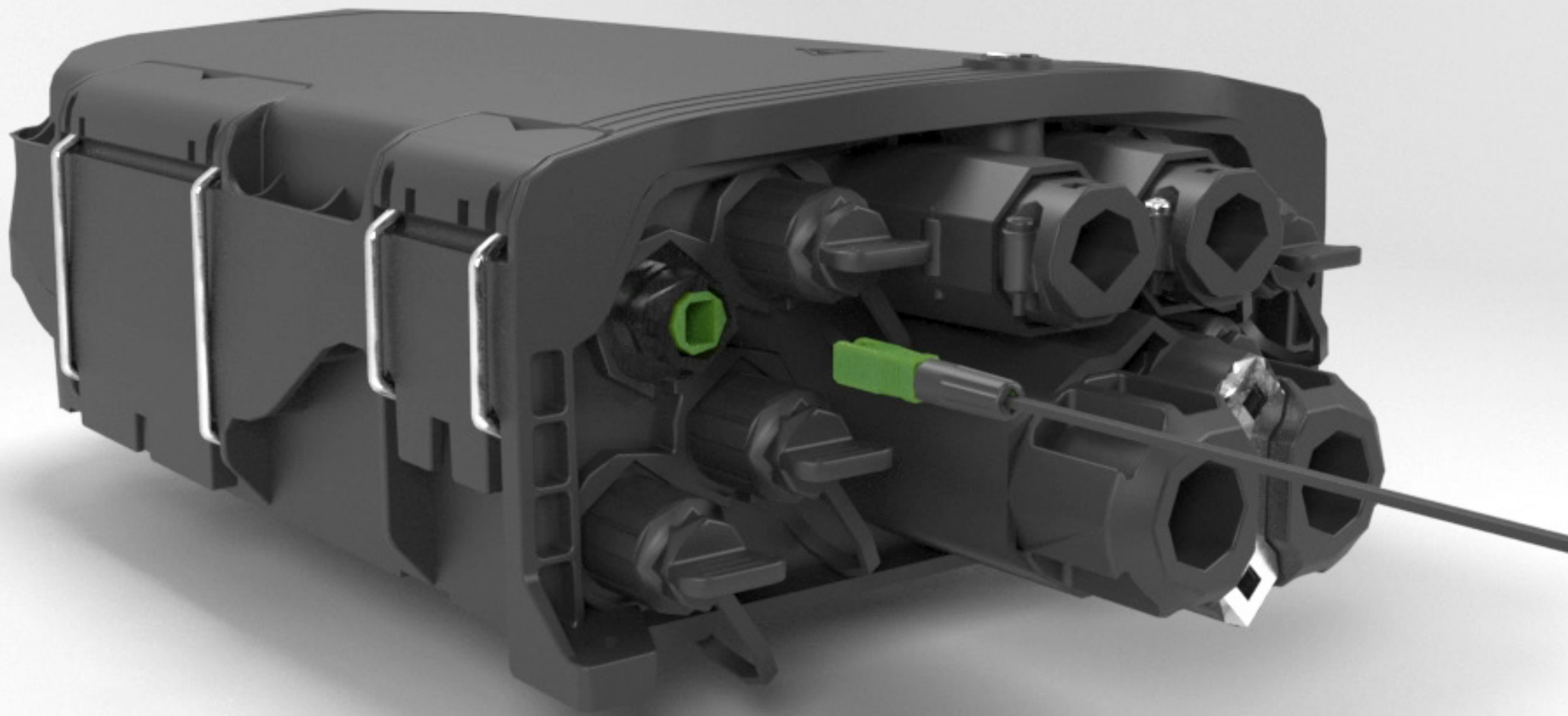
Model J 6-in-1 pre-connected quick plug - Model C sheath



Model J 6-in-1 pre-connected quick plug - Model D sheath



Model J 6-in-1 pre-connected quick plug - Model E sheath



PRE-CONNECT CONNECTOR AND ADAPTOR

SIM-PRECOM SOLUTION

The SIMPRECON preconnectorized solution is a technology that safeguards the external connection of cables with mechanical connectors, minimizing issues arising from processes associated with opening the box during installation and maintenance work.

Through a system of protective covers, connection points are shielded from external elements, ensuring that the cable maintains optimal tension. Its robust plastic structure and UV protection offer features that enable it to withstand the environmental conditions of outdoor installations.

The SIMPRECON solution can accommodate both flat and round drop cables. Adapters are available in black, gray, or colorful options (upon request).



CABLE COIL SUPPORT



FAB-COSU-001



FAB-COSU-002



FAB-COSU-003



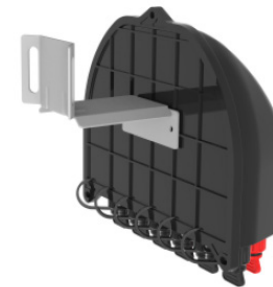
FAB-COSU-004



FAB-COSU-001



FAB-COSU-002



FAB-COSU-003





FIBRAMÉRICA | Míngqíng Táncomé Technology Co., Ltd
No 42, Baijin East Road, Baijin Industrial Park,
Baizhong Town, Míngqíng County, Fuzhou, Fujian, China
Phone: +86 18621754882

America office:
Rua Arthur Max Dôose, 153, Sala 1302
Balneário Camboriú - Brasil
Phone: (+55) 47 2033 2231
Contact: comercial@fibramerica.com

www.fibramerica.com