



FIBRAMÉRICA

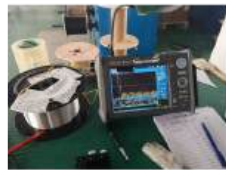
# Connecting the **Future**

---

**Innovative Fiber Optic  
Infrastructure Solutions for  
Modern Networks**

# INDEX

<b>FIBER OPTIC CABLES</b>	<b>5</b>
<b>SPlicing AND DISTRIBUTION</b>	<b>8</b>
Junction Boxes	8
Termination Boxes	10
R&D Department	13
<b>FAB-PRECON PRECONNECTORIZED SOLUTIONS</b>	<b>14</b>
<b>PASSIVE SOLUTIONS</b>	<b>18</b>
Fiber Socket	20
Mechanical Connectors	21
Optical Internal Distributor	22
<b>OPTICAL MEASURING INSTRUMENTS</b>	<b>24</b>
<b>MICRODUCTS</b>	<b>28</b>
Air-Blown Cable	29
Accessories And Tubes	30
Microduct Connectors	31
<b>HARDWARE</b>	<b>33</b>
Connections and Terminals	34
Miscellaneous and Transceivers	36
<b>SOLAR AND ELECTRIC ENERGY SOLUTIONS</b>	<b>38</b>
Portable Power Supply	39
Miscellaneous	41
Reliable Low-Voltage Domestic Energy Storage Module	42
Reliable Domestic High Voltage Energy Storage Systems	44
Commercial And Industrial Energy Solutions	45



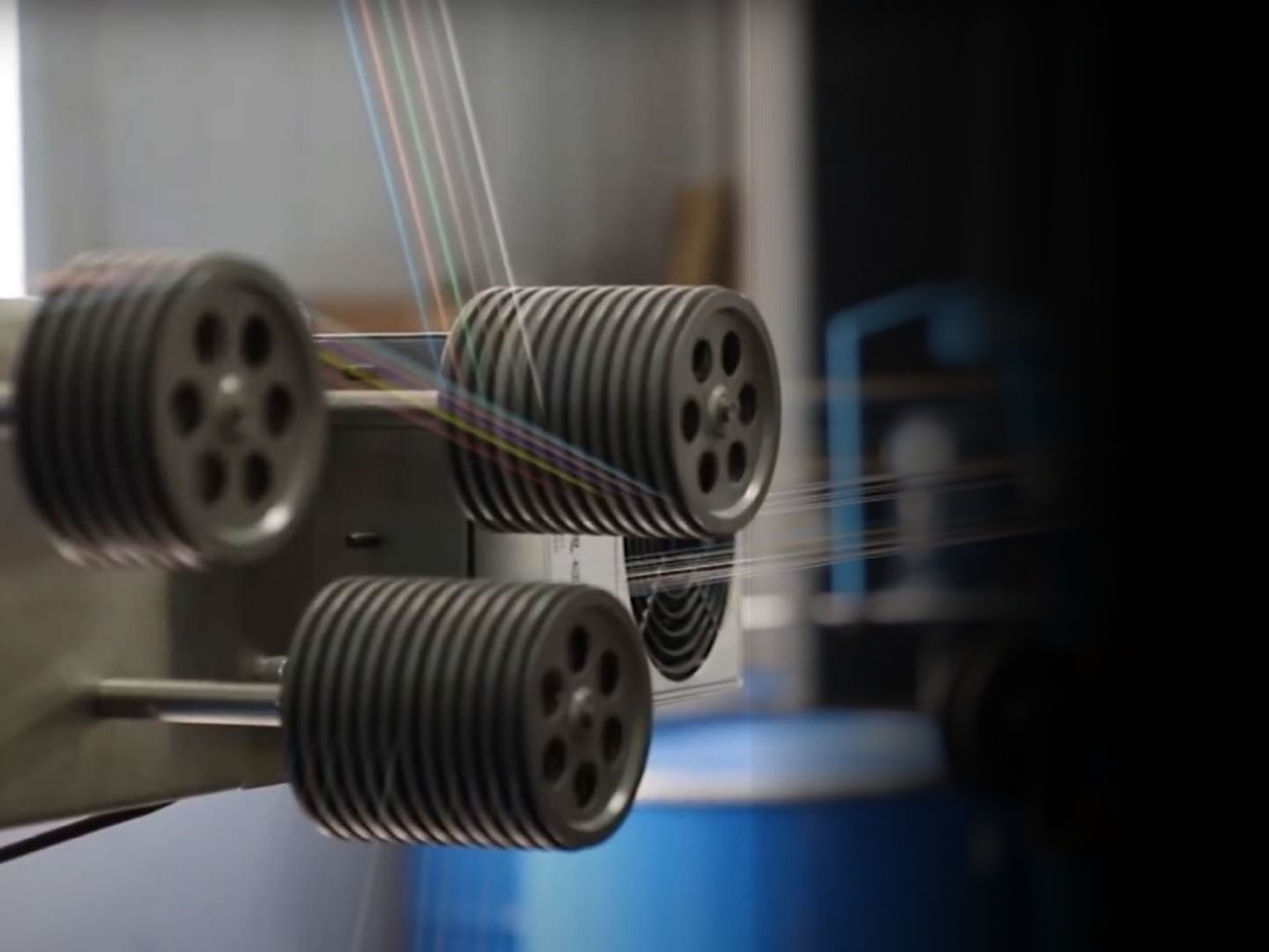
# WE ARE FIBRAMERICA

We manufacture, distribute, develop and market fiber optic products worldwide

At Fibramerica, we believe that every connection is an opportunity to transform the future. We are a global company, but we think locally. With headquarters in Fuzhou, China, and offices in Shanghai, Ningbo and Latin America, we are always close to our customers, offering immediate technical and commercial support, in Spanish and Portuguese, in the same time zone.

Founded with the aim of innovating in the telecommunications sector, Fibramerica quickly established itself as a leading provider of optical connectivity solutions. We are proud to manufacture products certified to the highest international quality standards, such as ISO9001, guaranteeing excellence from conception to final delivery.

Today, we are strategic partners for operators, distributors, importers and installers around the world, acting both as OEMs and under our own brand. Our commitment is clear: to offer innovative solutions, competitive prices and an agile and efficient after-sales service.



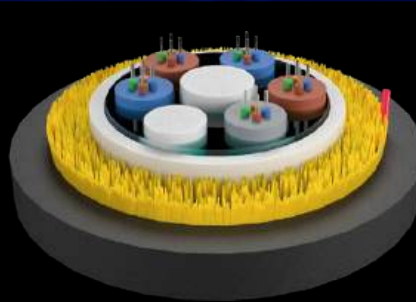
# Faster Networks, More Materials Smarter

Designed for modern telecommunications challenges, our fiber optic cables are the invisible basis of ultra-fast connections. Lightweight, durable and highly flexible, they are ideal for both underground and aerial installations.

Optical fiber is the heart of modern networks - and Fibramerica understands this better than anyone. We offer a wide range of cables designed to meet the specific requirements of each project, whether urban, rural, underground or aerial.

Among the solutions are the EPFU series cables, true innovations in the blown-in installation segment. Compact and lightweight, these cables are ideal for installation on microtube rods, guaranteeing maximum protection and ease of maintenance. Their thermoplastic construction offers superior resistance to impacts, humidity and inclement weather, while their optimized surface reduces friction during installation.

Whatever the demand - from metropolitan networks to FTTH applications - our cables are designed to maximize infrastructure performance and extend network life.



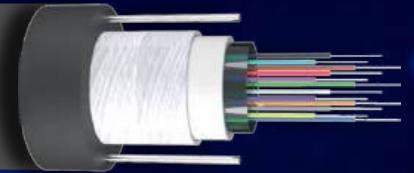
## HIGHLIGHTS

### ADSS Cable

Fully dielectric self-supported cable with one or two medium or high density polyethylene sheaths, small diameter and ideal for self-supported aerial installation, without the use of messenger cables. It has a maximum capacity of up to 144 fibers and supports spans of up to 200 meters. Excellent performance against tensile and mechanical forces in aerial installation and crushing together with great flexibility.

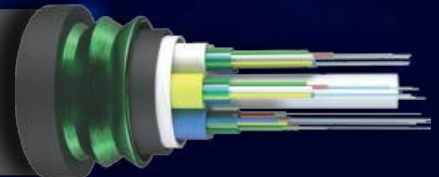
### Central Pipe Dielectric Cable

**FAB-GYFXV** - Cable for aerial and duct use with lateral dielectric tensile members and a dielectric armor. Small diameter and compact design.



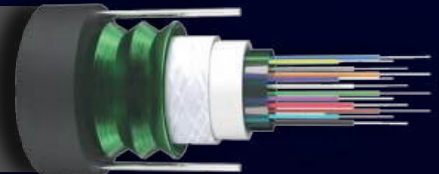
### Shielded Central Tube Cable

**FAB-GYTA53 / GYTY53** - Cable with metallic armor and double jacket for wide applications in outdoor environments, with anti-rodent and anti-humidity properties.



### Armored Central Tube Cable

**FAB-GYXTW** - It is a versatile solution for aerial, duct, direct buried, and pipe laying applications, featuring parallel metallic elements that enhance tensile strength.



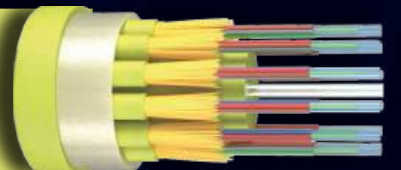
### Flat Drop Cable

**FAB-GJVX(F)CH** - This flat drop cable enables quick, easy installation with a compact design and ensures high network reliability.



### Distribution Cable

**FAB-GJPFJV** - Multi-purpose optical cable features a non-metallic reinforced central core with multi-core subunits overlaid.



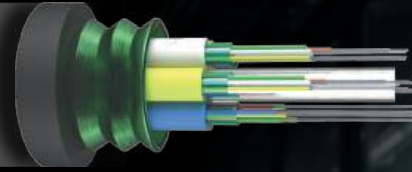
## Figure 8 Cable

**FAB-GYTC8S** - 8" shaped cable composed of two single-fiber cables glued together. Used for the manufacture of duplex patch cords.



## Outdoor Shielded Cable

**FAB-GTYS** - Cable for aerial use, duct and direct burial, with corrugated steel armor that provides high protection against rodents.



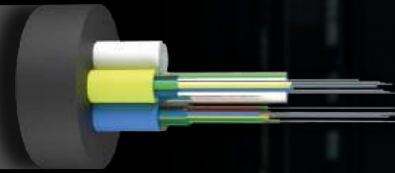
## Reinforced Distribution Cable

**FAB-GJA** - Reinforced distribution cable for indoor and outdoor installations for any purpose. High resistance to humidity.



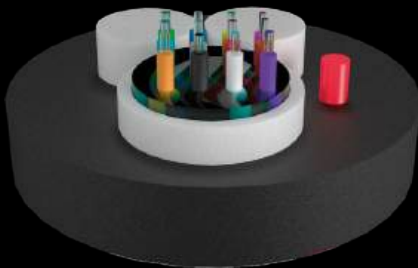
## Aerial Dielectric Cable

**FAB-GYFTY** - Aerial dielectric cable with fiber yarn dielectric armor. Used for backbone and interbuilding networks. Supports up to 288F0.



## Flat Drop Cable for Duct

**FAB-GJXFHA** - A version of the drop cable, with metallic armor and circular sheath, for environments requiring greater protection and resistance.



### HIGHLIGHTS

## ASU Cable

Fully dielectric and self-supporting compact structure cable with a medium density polyethylene jacket polyethylene sheath of medium density, with reduced diameter and capacity to support up to 12 to support up to 12 fibers in its single tube. The cable consists of two FRP elements. The cable consists of two FRP elements that act as supporting elements supporting up to 120 meters.



Splicing and Distribution

# Perfect Connections, Total Performance

Our splicing and distribution boxes guarantee maximum safety and efficiency at critical points in the network. Whether primary, secondary or terminal, we offer versatile and resistant solutions.

The integrity of a network depends on perfect connections. That's why Fibramerica's junction and distribution boxes are designed for maximum safety, durability and ease of use in any environment.

Available in horizontal and vertical versions, these boxes are ideal for overhead and subway applications. Made of UV, moisture and shock resistant rigid plastic, they can hold up to 288 merges, acting as termination, splicing and/or segregation components in primary, secondary or end-point networks.

Their modular design allows easy expansion and adaptation to different network topologies, while their sealing system guarantees protection against dust and water, ensuring continuous operation even in extreme conditions.

**Product Features**

- ➔ Capacity of up to 288 fusions
- ➔ UV, humidity and shock resistant
- ➔ Available in horizontal and vertical versions
- ➔ IP degrees of protection adjustable to environmental conditions



**FAB-FOSC-BIM-A6**

Capacity: 96 Fibers  
Ports: 6  
Cable diameter: 2(Ø16), 4(Ø13)  
Size: 390\*210\*120



**FAB-FOSC-BIM-C8**

Capacity: 96 Fibers  
Ports: 8  
Cable diameter: 4(Ø16), 4(Ø20)  
Size: 450\*220\*110



**FAB-FOSC-BIM-D6**

Capacity: 96 Fibers  
Ports: 6  
Cable diameter: 2(Ø13), 2(Ø16), 4(Ø20)  
Size: 450\*220\*110



**FAB-FOSC-BIM-F4**

Capacity: 96 Fibers  
Ports: 4  
Cable diameter: Ø16  
Size: 340\*150\*70



**FAB-FOSC-BIM-P8**

Capacity: 48 Fibers  
Ports: 8  
Cable diameter: 6(Ø13), 2(Ø16)  
Size: 336\*180\*100



**FAB-FOSC-BIM-M6**

Capacity: 96 Fibers  
Ports: 6  
Cable diameter: 2(Ø13), 2(Ø20), 2(Ø23)  
Size: 450\*220\*110



**FAB-FOSC-BIM-N6**

Capacity: 288 Fibers  
Ports: 6  
Cable diameter: 2(Ø16), 2(Ø20), 2(Ø23)  
Size: 450\*216\*160



**FAB-FOSC-BIM-O6**

Capacity: 96 Fibers  
Ports: 6  
Cable diameter: 2(Ø13), 2(Ø16), 2(Ø20)  
Size: 470\*180\*125



### FAB-FOSC-BDH-C17

Closure: Heat shrinkable  
Capacity: 288 Fibers  
Ports: 17 (1 oval +16)  
Cable diameter: 16~21mm  
Size: 504(H)\*298(D)



### FAB-FOSC-BDH-A9

Closure: Heat shrinkable  
Capacity: 144 Fibers  
Ports: 9 (1 oval +8)  
Cable diameter: 12mm  
Size: 420(H)\*160(D)



### FAB-FOSC-BDH-D5

Closure: Heat shrinkable  
Capacity: 144 Fibers  
Ports: 5 (1 oval +4)  
Cable diameter: 25mm  
Size: 515(H)\*310(D)



### FAB-FOSC-BDH-H7

Closure: Heat shrinkable  
Capacity: 288 Fibers  
Ports: 7 (1 oval +6)  
Cable diameter: 25mm  
Size: 515(H)\*310(D)



### FAB-FOSC-BDH-A4

Closure: Heat shrinkable  
Capacity: 96 Fibers  
Ports: 4 (1 oval +3)  
Cable diameter: 16mm  
Size: 440(H)\*190(D)



### FAB-FOSC-BDH-M9

Closure: Heat shrinkable  
Capacity: 144 Fibers  
Ports: 9 (1 oval +8)  
Cable diameter: 13mm  
Size: 470(H)\*210(D)



### FAB-FOSC-BDH-O5

Closure: Heat shrinkable  
Capacity: 96 Fibers  
Ports: 5 (1 oval +4)  
Cable diameter: 18mm  
Size: 504(H)\*205(D)



### FAB-FOSC-BDM-B4

Closure: Mechanical  
Capacity: 48 Fibers  
Ports: 4  
Cable diameter: 16mm  
Size: 295(H)\*190(D)



### FAB-FOSC-BDH-J4

Closure: Heat shrinkable  
Capacity: 48 Fibers  
Ports: 4 (1 oval +3)  
Cable diameter: 25mm  
Size: 310(H)\*190(D)



HIGHLIGHTS



**FAB-FSB-4A**

Adapters: 4  
Protection: IP65  
Capacity: 4 Fibers  
Diameter: Ø10  
Size: 225\*200\*65



**FAB-HGT-8A**

Adapters: 8  
Protection: IP65  
Capacity: 12 Fibers  
Diameter: Ø8  
Size: 240\*195\*66



**FAB-HGT-8A1**

Adapters: 8  
Protection: IP65  
Capacity: 24 Fibers  
Diameter: Ø12  
Size: 281\*177\*80



**FAB-HGT-8D**

Adapters: 8  
Protection: IP65  
Capacity: 30 Fibers  
Diameter: Ø8  
Size: 230\*180\*55



**FAB-HGT-8E**

Adapters: 8  
Protection: IP65  
Capacity: 30 Fibers  
Diameter: Ø8  
Size: 230\*180\*55



**FAB-HGT-8H**

Adapters: 8  
Protection: IP67  
Capacity: 24 Fibers  
Diameter: Ø13  
Size: 268\*237\*77



**FAB-HGT-12A**

Adapters: 12  
Protection: IP65  
Capacity: 36 Fibers  
Diameter: Ø16  
Size: 250\*190\*39



**FAB-HGT-12C**

Adapters: 8  
Protection: IP65  
Capacity: 36 Fibers  
Diameter: Ø16  
Size: 225\*200\*65



**FAB-HGT-8G**

**Main Features**

- ➔ Gel sealing for excellent sealing and re-sealing performance.
- ➔ High quality engineering material of PP with good mechanical strength, sturdiness and durability.
- ➔ Clamping for feeder cable and drop cable, fiber splicing, fixation, storage and distribution in one box.

**Specifications**

Adapters: 8 SC  
Protection: IP65  
Capacity: 24 Fibers  
Diameter: Ø13  
Size: 225\*200\*65mm



**PROBOX64-16A**

Adapters: 16  
Protection: IP68  
Capacity: 16 Fibers  
Diameter: Ø16  
Size: 287\*172\*102



**FAB-HGT-16A**

Adapters: 16  
Protection: IP65  
Capacity: 36 Fibers  
Diameter: Ø16  
Size: 293\*219\*84



**SMALLBOX16**

Adapters: 16  
Protection: IP65  
Capacity: 36 Fibers  
Diameter: Ø16  
Size: 250\* 200\* 72



**FAB-HGT-16A-1**

Adapters: 16  
Protection: IP65  
Capacity: 36 Fibers  
Diameter: Ø12  
Size: 281\*177\*102



### FAB-HGT-16D

Adapters: 16  
Protection: IP65  
Capacity: 36 Fibers  
Diameter: Ø16  
Size: 300\*222\*73



### FAB-HGT-16F

Adapters: 16  
Protection: IP65  
Capacity: 96 Fibers  
Diameter: Ø16  
Size: 350\*245\*130



### FAB-HGT-16G3

Adapters: 16  
Protection: IP65  
Capacity: 48 Fibers  
Diameter: Ø12  
Size: 303\*216\*104



### FAB-HGT-16IN-S

Adapters: 16  
Protection: IP65  
Capacity: 96 Fibers  
Diameter: Ø18  
Size: 285\*175\*90



### FAB-HGT-16LW

Adapters: 16 (LGX)  
Protection: IP65  
Capacity: 96 Fibers  
Diameter: Ø15  
Size: 290\*210\*82



### FAB-HGT-16N

Adapters: 16  
Protection: IP65  
Capacity: 36 Fibers  
Diameter: Ø16  
Size: 330\*210\*87



### FAB-HGT-16P

Adapters: 16  
Protection: IP65  
Capacity: 32 Fibers  
Diameter: Ø16  
Size: 316\*250\*126



### FAB-HGT-16ST

Adapters: 16  
Protection: IP65  
Capacity: 72 Fibers  
Diameter: Ø18  
Size: 330\*210\*121



### FAB-HGT-16SZ

Adapters: 16  
Protection: IP65  
Capacity: 84 Fibers  
Diameter: Ø17  
Size: 360\*160\*117.6



### FAB-HGT-16T

Adapters: 16 (LGX)  
Protection: IP65  
Capacity: 32 Fibers  
Diameter: Ø16  
Size: 330\*204\*123.5



### FAB-HGT-16W-3

Adapters: 16  
Protection: IP65  
Capacity: 68 Fibers  
Diameter: Ø16  
Size: 274\*175\*82



### FAB-HGT-16WE

Adapters: 16  
Protection: IP65  
Capacity: 16 Fibers  
Diameter: Ø16  
Size: 287\*172\*102



### FAB-HGT-16WE-3

Adapters: 16 (LGX)  
Protection: IP65  
Capacity: 16 Fibers  
Diameter: Ø16  
Size: 287\*172\*102

*FIBRAMERICA splicing and distribution boxes guarantee maximum safety and efficiency at critical points in the network. Whether primary, secondary or terminal, we offer versatile and resistant solutions.*





### PROBOX68-8A

Adapters: 24  
Protection: IP65  
Capacity: 36 Fibers  
Diameter: Ø16  
Size: 320\*240\*100



### FAB-HGT-24A

Adapters: 24  
Protection: IP65  
Capacity: 36 Fibers  
Diameter: Ø16  
Size: 320\*240\*100



### FAB-HGT-24D

Adapters: 24  
Protection: IP65  
Capacity: 48 Fibers  
Diameter: Ø14  
Size: 330\*210\*87



### FAB-HGT-24H

Adapters: 24  
Protection: IP65  
Capacity: 48 Fibers  
Diameter: Ø16  
Size: 340\*250\*110



### FAB-HGT-24N

Adapters: 24  
Protection: IP65  
Capacity: 24 Fibers  
Diameter: Ø15  
Size: 330\*210\*87



### FAB-HGT-32J

Adapters: 32  
Protection: IP65  
Capacity: 48 Fibers  
Diameter: Ø12  
Size: 383\*205\*120



### FAB-HGT-32SZ

Adapters: 32  
Protection: IP65  
Capacity: 84 Fibers  
Diameter: Ø17  
Size: 360\*160\*117.6



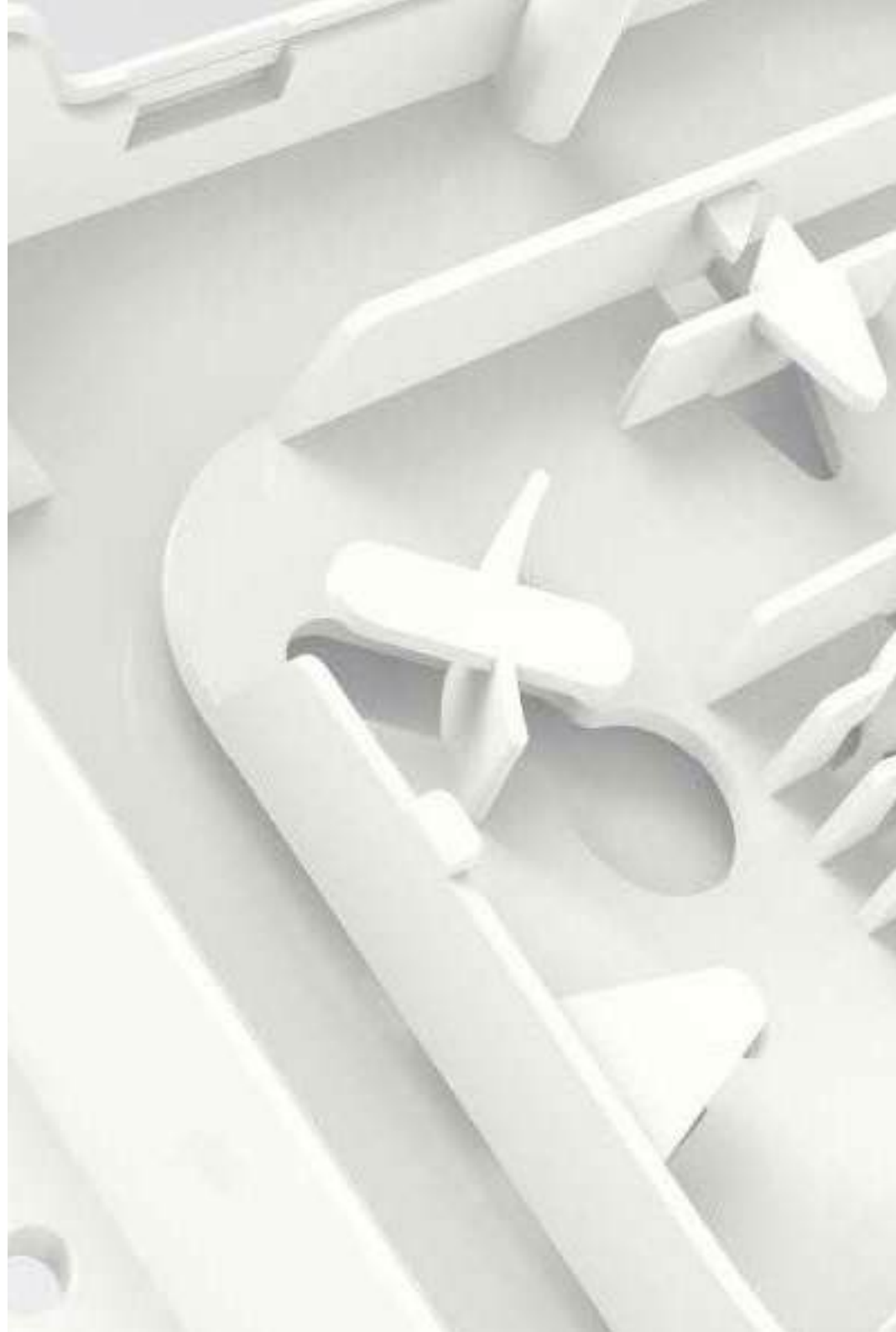
### FAB-HGT-64A

Adapters: 64  
Protection: IP65  
Capacity: 96 Fibers  
Diameter: Ø16  
Size: 520\*400\*200



### FAB-HGT-N3

Adapters: 16  
Protection: IP65  
Capacity: 36 Fibers  
Diameter: Ø16  
Size: 330\*210\*87



# Product Development

Faced with the constant technological challenges that the new generation of optical networks demands, companies in the telecommunications sector are adopting a business model that emphasizes innovation and the development of new, more efficient and competitive products.

Our company works in continuous processes of research, design and production of products to meet the particularities of each project of operators throughout the continent. To this end, it has a team of professionals with extensive experience focused on the development and implementation of optical solutions.

All technological proposals are projected, elaborated and evaluated according to international standards and interaction with customers. The processes include the definition of product architecture and 3D designs, definition of technical specifications, prototyping, testing, feasibility analysis, manufacturing and logistics.

FAB-PRECON Preconnectorized Solutions

# Agility and Precision from the First Meter

The FAB-PRECON line eliminates complex installation steps. With pre-installed connectors and ready-to-use boxes, your network is up and running in minutes.

Speed and precision make the difference in large-scale projects. FAB-PRECON preconnectorized solutions speed installation and significantly reduce commissioning time.

These boxes come ready to connect, with pre-installed ports and configurations adaptable to different network architectures, whether balanced or unbalanced. Available in 4-, 8-, 10-, 10-, 12-, 16- and 24-port capacities, they offer variable IP protection ratings depending on project needs.

In addition, thanks to their compact and modular design, they can be easily integrated into any space, from telecommunications rooms to work area cabinets. All this without compromising on quality and reliability, fundamental characteristics of all our products.





### FAB-HGT-4X

Adapters: 4  
Protection: IP68  
Capacity: 12 Fibers  
Diameter: Ø10  
Size: 38\*30\*56



### PROBOX68-8PRE

Adapters: 8  
Protection: IP68  
Capacity: 96 Fibers  
Diameter: Ø15  
Size: 378\*255\*116



### FAB-HGT-8AX

Adapters: 8  
Protection: IP65  
Capacity: 36 Fibers  
Diameter: Ø14  
Size: 280\*177\*109



### PROBOX68-16PRE

Adapters: 16  
Protection: IP68  
Capacity: 96 Fibers  
Diameter: Ø15  
Size: 378\*255\*136



### FAB-HGT-16GTS-4

Adapters: 16  
Protection: IP65  
Capacity: 48 Fibers  
Diameter: Ø13  
Size: 316\*227\*147



### FAB-HGT-16SX

Adapters: 16  
Protection: IP65  
Capacity: 36 Fibers  
Diameter: Ø8 ~ 14  
Size: 319\*214\*133



### FAB-HGT-8K

Adapters: 8  
Protection: IP65  
Size: 270\*217\*96



### FAB-HGT-8SX

Adapters: 8  
Protection: IP65  
Capacity: 36 Fibers  
Diameter: Ø8 ~ 14  
Size: 319.3\*200\*97.5



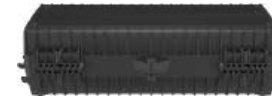
### FAB-HGT-8SX-A

Adapters: 8  
Protection: IP68  
Capacity: 48 Fibers  
Diameter: Ø18  
Size: 340\*210\*97.5



### FAB-HGT-16SX-A

Adapters: 16  
Protection: IP68  
Capacity: 48 Fibers  
Diameter: Ø18  
Size: 340\*210\*133



### FAB-HGT-16SY

Adapters: 16  
Protection: IP65  
Capacity: 84 Fibers  
Diameter: Ø17  
Size: 360\*160\*117.6



### FAB-HGT-16X

Adapters: 16  
Protection: IP65  
Capacity: 36 Fibers  
Diameter: Ø18  
Size: 380\*199\*120



### FAB-HGT-8T

Adapters: 4  
Protection: IP68  
Capacity: 16 Fibers  
Diameter: Ø14  
Size: 180\*190\*129



### FAB-HGT-8Y

Adapters: 8  
Protection: IP65  
Capacity: 60 Fibers  
Diameter: 2 Ø16  
Size: 330\*210\*87



### MINIBOX68

Adapters: 12  
Protection: IP68  
Size: 199\*193\*78.5



### FAB-HGT-16Y

Adapters: 16  
Protection: IP65  
Capacity: 16 Fibers  
Diameter: Ø14  
Size: 208\*241\*117



### FAB-HGT-16Y3

Adaptadores: 16  
Proteção: IP65  
Capacidade: 16 fibras  
Diâmetro: Ø13  
Tamanho: 294\*214\*129



## Type E Solution

The E-type solution consists of a reinforced bayonet-type connector that allows easy and quick connection to the optical adapter. Firm and reliable anchorage by twisting. Factory assembled and field assembled version available.

## SIMPRECON Solution

A universal solution to protect the connection between the mechanical connector and the external adapter made by the case base. Allows the use of both flat and round supply cables.





# FAB-HGT-2Y

Pre-connectorized Fiber Optic Cable Distribution Box

Quick and reliable connection for the FTTX network

Passive Solutions

# Total Integration in High Demand Environments

From the building entrance to the final point of use, our range of supplies guarantees stable and secure connectivity. Ideal for corporate buildings, data centers and industrial environments.

Connecting is not just about transmitting data; it is about integrating systems, optimizing spaces and ensuring that every user has access to the best possible experience. Fibramerica's in-plant supplies are designed to make it happen.

From the point of entry to the work area, our line includes a variety of solutions for optical distribution, vertical and horizontal cabling, and active and passive signal management. All our products meet the most demanding international standards, ensuring compatibility, performance and longevity.

Whether in corporate buildings, university campuses or data centers, Fibramerica supplies are the foundation for building intelligent, secure and scalable networks.



### FAB-HGT-4A

Adapters: 4  
Protection: IP65  
Capacity: 4 Fibers  
Diameter: Ø5  
Size: 186\*116\*40



### FAB-HGT-6A

Adapters: 6  
Protection: IP65  
Capacity: 8 Fibers  
Diameter: Ø5  
Size: 150\*120\*37



### FAB-HGT-8CY

Adapters: 8  
Protection: IP20  
Max. capacity  
10 Fibers (2 splitters)  
Size: 189\*120\*60



### FAB-HGT-8ZT-1

Adapters: 8  
Protection: IP54  
Capacity: 8 Fibers  
Diameter: Ø10  
Size: 235\*126\*52



### FAB-HGT-8ZT

Adapters: 8  
Protection: IP54  
Capacity: 8 Fibers  
Diameter: Ø10  
Size: 235\*126\*52



### FAB-HGT-8ZTX

Adapters: 8  
Protection: IP30  
Capacity: 8 Fibers  
Diameter: Ø10  
Size: 170\*130\*40



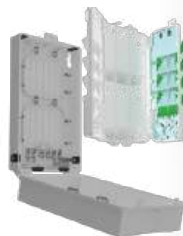
### FAB-HGT-8ZX (RASKBOX)

Adapters: 8  
Protection: IP54  
Capacity: 12 Fibers  
Diameter: Ø12  
Size: 151.8\*105.7\*59



### FAB-HGT-16ZT

Adapters: 16  
Protection: IP65  
Capacity: 16 Fibers  
Diameter: Ø16  
Size: 200\*130\*57



### FAB-HGT-64X

Adapters: 64  
Protection: IP54  
Capacity: 96 Fibers  
Diameter: Ø15  
Size: 425\*265\*122





**FAB-FFS-1A**

Adapters: 1  
Protection: IP45  
Size: 146\*88\*90



**FAB-FFS-1B**

Adapters: 1  
Protection: IP45  
Size: 116\*85\*22



**FAB-FFS-1AB**

Adapters: 1  
Protection: IP20  
Size: 93X83X29



**FAB-FSS-2A**

Adapters: 2  
Protection: IP65  
Size: 84\*130\*25



**FAB-FSS-2B**

Adapters: 1  
Protection: IP45  
Size: 100\*80\*23



**FAB-FSS-2C**

Adapters: 2  
Protection: IP45  
Size: 86\*86\*24



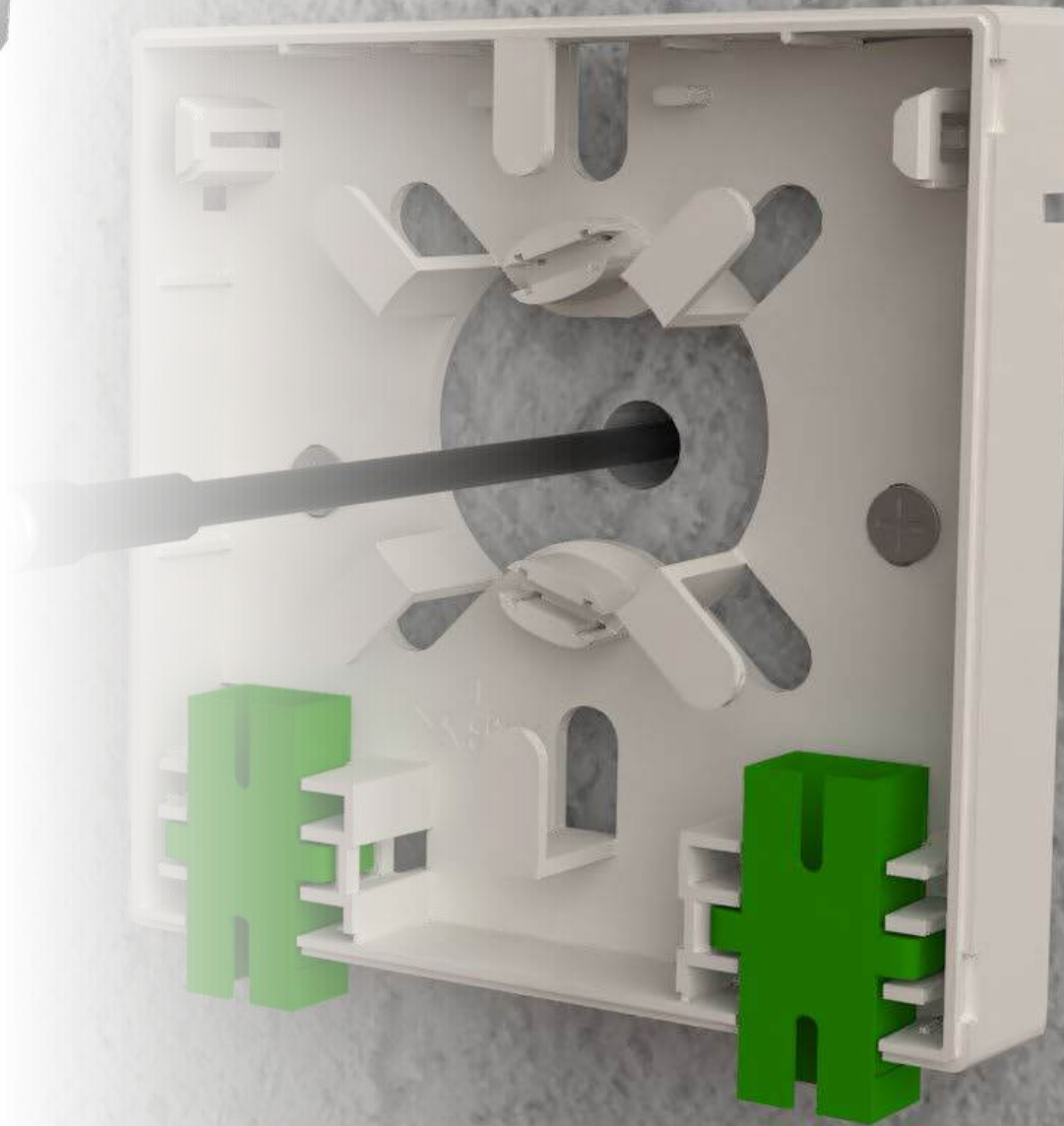
**FAB-FSS-2F**

Adapters: 1  
Protection: IP54  
Size: 105\*82\*21



**FAB-FSS-4A**

Adapters: 4  
Protection: IP54  
Size: 146\*88\*90



## Mechanical Connectors



**Mechanical connector  
FAB-SC-04**

I.L.: APC 0,5db | UPC 0,5db  
R.L.: APC 50db | UPC 50db

Applicable for 2\*3mm cable  
FTTH Drop Cable



**Mechanical connector  
Mod. FAB-FAST**

IL: APC 0,25db | UPC 0,3db  
RL: APC 55db | UPC 50db

Applicable for 2\*3mm FTTH Drop  
Cable



**Mechanical connector  
Mod. FAB-ESC2500**

I.L.: APC 0,25db | UPC 0,3db  
R.L.: APC 55db | UPC 50db

Applicable for 2\*3mm FTTH Drop  
Cable and 2\*1.6mm FTTH cable



**Mechanical connector  
Mod. FAB-FAOCSC**

I.L.: APC 0,5db | UPC 0,5db  
R.L.: APC 55db | UPC 50db

Applicable for 2\*3mm FTTH Drop  
Cable



**Mechanical connector  
FAB-SC-01**

I.L.: APC 0,3db | UPC 0,25db  
R.L.: APC 55db | UPC 50db

Applicable para cable 2\*3mm  
FTTH Drop Cable



**Mechanical connector  
FAB-FC-SC-B**

I.L.: APC ≤ 0,3db | UPC ≤ 0,3db  
R.L.: APC 55db | UPC 50db

Applicable for 3mm, 2mm and  
0.9mm cables, as well as 2\*3mm  
drop cable.



**Mechanical connector  
FAB-SC-02**

I.L.: APC 0,3db | UPC 0,25db  
R.L.: APC 55db | UPC 50db

Applicable for 2\*3mm FTTH Drop  
Cable



**Mechanical connector  
FAB-FMC-LC30X20**

I.L.: APC 0,3db | UPC 0,3db  
R.L.: APC 60db | UPC 50db

Applicable for 2\*3mm FTTH Drop  
Cable



**Mechanical connector SC  
FAB-SC-01**

RL: ≥ 50dB for UPC | ≥ 55dB for  
APC

Application: Drop 3x2mm, 2x1.6mm



**Mechanical connector SC  
FAB-SC-02**

RL: ≥ 50dB for UPC | ≥ 55dB for  
APC

Application: Drop 3x2mm



**Mechanical connector SC  
FAB-ESC2500**

RL: ≥ 50dB for UPC | ≥ 55dB for  
APC

Application: 3x2mm and  
1.6x2.0mm



**Mechanical connector SC  
FAB-FMC-LC30X20**

RL: ≥ 50dB for UPC | ≥ 55dB for  
APC

Application: Drop 3x2mm



**Mechanical connector SC  
FAB-FTD925U-L**

RL: ≥ 50dB for UPC | ≥ 55dB for  
APC

Application: 2mm, 3mm, 0.9mm  
& 3.0\*2.0mm & Drop 2.0\*1.6mm



**Mechanical connector SC  
FAB-SC-03**

RL: ≥ 50dB for UPC | ≥ 55dB for  
APC

Application: Drop 3x2mm



**Mechanical connector SC  
FAB-SC-04**

RL: ≥ 50dB for UPC | ≥ 55dB for  
APC

Application: Drop 2x3mm



**Mechanical connector SC  
FAB-FAST**

RL: ≥ 50dB for UPC | ≥ 55dB for  
APC

Application: Drop 3x2mm



**Mechanical connector SC  
FAB-FTD925T**

RL: ≥ 50dB for UPC | ≥ 55dB for  
APC

Application: 2mm, 3mm, 0.9mm &  
2.0\*3.0mm & 2.0\*1.6mm Flat Drop



**Mechanical connector SC  
FAB-FTD920I**

RL: ≥ 50dB for UPC | ≥ 55dB for  
APC

Application: 2mm, 3mm, 0.9mm  
& 3.0\*2.0mm & Drop 2.0\*1.6mm



**FAB-FPX-P1**

Size: 482\*276\*200  
Capacity: 72 FO  
Adapter types: SC/FC/LC/ST/E-2000/ others.



**FAB-FPX-P2**

Size:482\*250\*88  
Capacity: 96 FO  
Adapter types: SC/FC/LC/ST/E-2000/ others.



**FAB-FPX-P4**

Size: 434\*482\*255  
Capacity: 192 FO  
Adapter types: SC/FC/LC/ST/E-2000/ others.



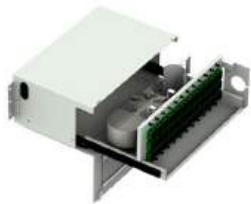
**FAB-FPX-P5**

Size: 482\*250\*88  
Capacity: 96 FO  
Adapter types: SC/FC/LC/ST/E-2000/ others.



**FAB-FPX-P13**

Size:482.6\*275\*594  
Capacity: 252 FO  
Adapter types: SC/FC/LC/ST/E-2000/ others.



**FAB-FSP-S3**

Size: 171.2\*482\*278  
Capacity: 144 FO  
Adapter types: SC/FC/LC/ST/E-2000/ others.



**FAB-FSP-S12**

Size: 482\*240\*88  
Capacity: 48 FO  
Adapter types: SC/FC/LC/ST/E-2000/ others.



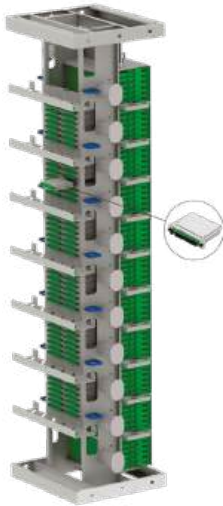
**FAB-FSP-SX4**

Size: 380\*482\*176  
Capacity: 144 FO  
Adapter types: SC/FC/LC/ST/E-2000/ others.



**FAB-FSX-P2-C**

Size: 484x275x44mm  
Capacity: 48FO



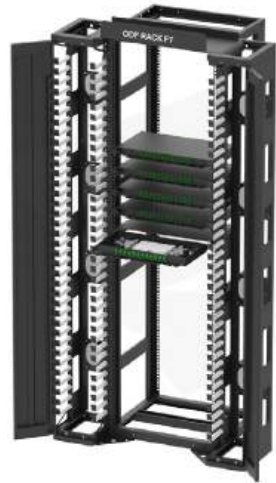
**FAB-FSP-F2-792A**

Size: 2200x550x500mm  
Capacity: 792 FO



**FAB-FSP-F4-B**

Size: 2200x900x300mm  
Capacity: 960 FO



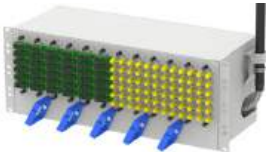
**FAB-FSP-F7**

Size: 2200x900x600mm  
Capacity: 1128 FO



**FAB-FSP-S21-48**

Size: 482x310x88mm  
Capacity: 48 FO



**FAB-FSP-P14**

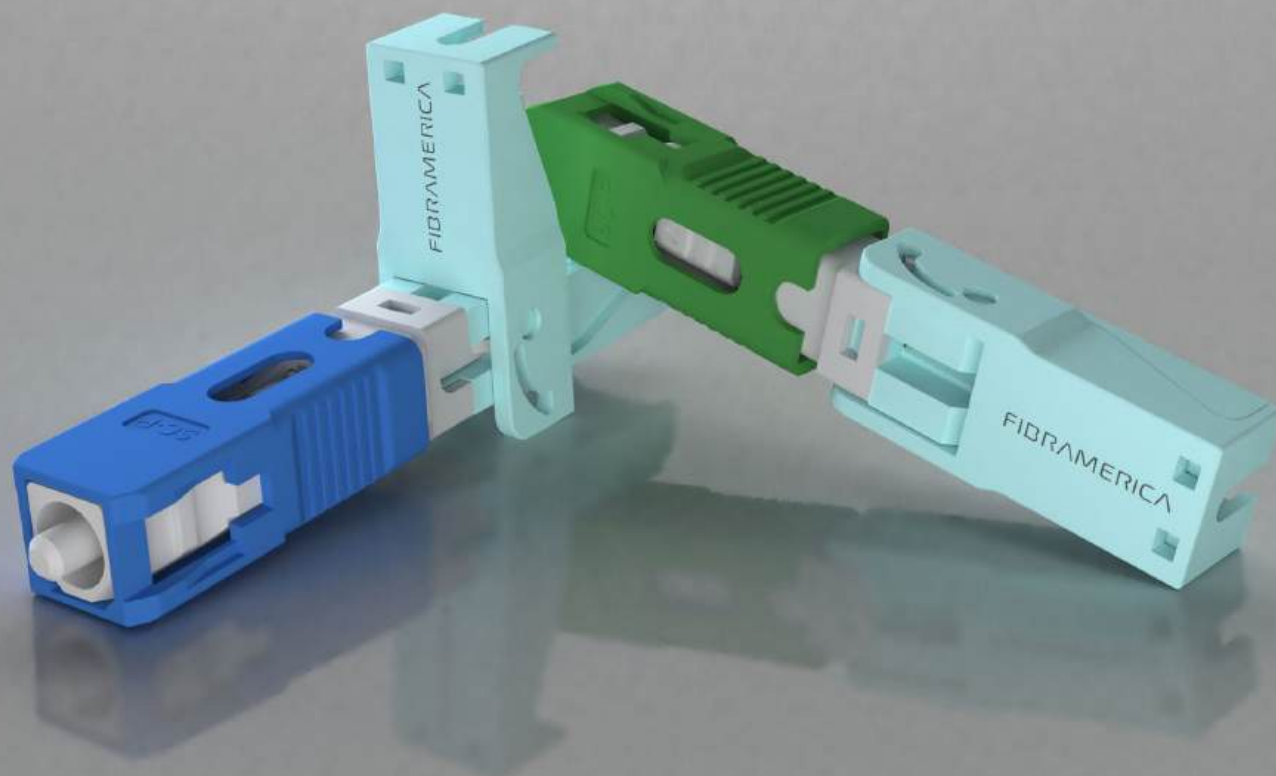
Size: 482x175x173mm  
Capacity: 144 FO



**FAB-FSP-SX1-16**

Size: 482.6x360x53mm  
Capacity: 24 FO

## FAB-SC-APC&UPC-06 SERIES



**Simple, stable and cost-effective!**

# Real-Time Diagnostics, Results in Seconds

Precision equipment for complete optical network analysis. From OTDRs to portable microscopes, our instruments guarantee rapid diagnosis and informed decisions.

Absolute accuracy. Proven reliability. Speed in every test. Fibramerica's instruments are essential tools for the construction, maintenance and diagnosis of fiber optic networks.

We have a complete line developed in partnership with LinkU, a brand recognized worldwide for its innovation and quality in telecommunications equipment. Among the products, the following stand out:

- ➔ **OTDR LOT2100:** a portable and economical optical reflectometer, ideal for technicians of all levels.
- ➔ **LFS-4T Fusion Machine:** with 4.3-inch touch screen, long-life removable battery and fusion times as fast as 6 seconds.
- ➔ **LP-3 Power Meter:** accurate multi-wavelength calibration, intuitive interface and compatibility with FC, SC and ST connectors.
- ➔ **LFP-50 Inspection Probe:** Wi-Fi/USB connection, automatic analysis in seconds and adjustable brightness control.

All these devices allow complete diagnostics, fault identification and signal integrity assurance, making them indispensable allies for engineers and technicians in the field.



## OTDR LinkU Mod. LOT 2100

The LOT2100 OTDR is a cost-effective and easy-to-use instrument, ideal for technicians of all levels. It enables easy-to-understand automatic analysis of FTTH network construction and maintenance work.

Its easy-to-use interface is designed for simple, one-button testing. Its system allows you to combine basic tests in a single handheld device through its built-in modules such as Visual Fault Locator (VFL), Optical Power Meter (OPM) and Light Source (OLS).

### Characteristics

- ➔ Portable and lightweight (0.3 kg)
- ➔ Built-in OLS / OPM / VFL modules
- ➔ 1000 test record storage groups
- ➔ Event map
- ➔ 3.2 inch LCD display
- ➔ Professional PC software for test report generation
- ➔ One-button self-test

## LOT5200 Series: OTDR Excellence

LinkU's LOT5200 Series represents the state of the art in OTDR technology, combining exceptional accuracy, an intuitive interface and multiple functionalities in a single compact device.



### Advanced software features

The LOT5200 Series goes beyond exceptional hardware, offering software features that simplify analysis and increase productivity:

- ➔ **Fiber Mapper:** Intuitive visual representation of network events
- ➔ **Automatic/manual analysis:** Flexibility for different levels of expertise
- ➔ **Multiple analysis functions:** Advanced tools for interpreting results
- ➔ **Loss/Multi curve comparison:** Comparative analysis of different paths
- ➔ **In-line measurement of PON systems:** Ability to analyze via splitters
- ➔ **Bidirectional analysis:** Accurate characterization of losses in each event
- ➔ **Batch editing and printing:** Efficient processing of multiple traces
- ➔ **CSV report formats:** Export for customized analysis



LIGHT SOURCE  
LS-3 Series



POWER METER  
LP-3 Series



MULTIMETER  
LM-3 Series



POWER METER  
LP-3PX-XG-PON Series



LIGHT SOURCE  
LS-2 Series



POWER METER  
LS-2 Series



MULTIMETER  
LM-2 Series



FAULT DISPLAY  
LV Series



FIBER IDENTIFIER  
LFI-3 Series



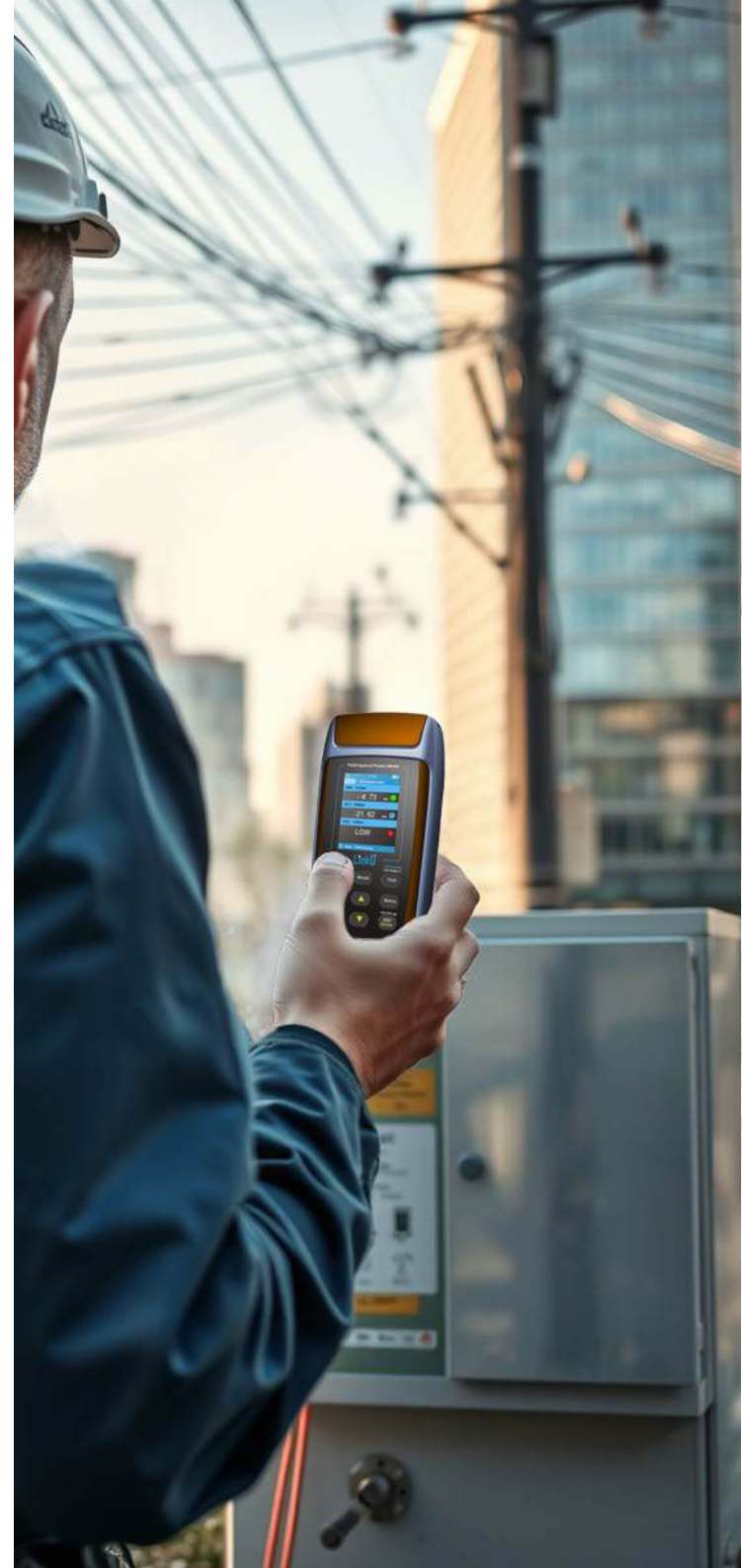
PORTABLE OTDR  
LOT3100 Series



POWER METER  
LB5100 Series



IL/RL TEST STATION  
LB5601 Series





Mini-OTDR

LinkU

- OTDR
- OPM
- VFL
- Laser Source
- Fiber Inspection
- Event Map
- Loss Testing
- Setting
- File

- M
- A
- Navigation Pad
- SETUP
- ESC
- Power Button

# Intelligent Infrastructure for Future Networks

Fibramerica microducts allow for fast installation, scalable expansion and long-lasting fiber protection. A real revolution in efficiency and cost-effectiveness.

In a world where data demand is growing exponentially, infrastructure must evolve with it. Fibramerica microducts offer a flexible, cost-effective and scalable solution for deploying fiber optic networks with agility and efficiency.

Designed to accommodate multiple fibers within a single space, these ducts avoid congestion and clutter in the underground, optimizing the use of resources and facilitating future expansions. Their resistant structure guarantees protection against environmental factors and physical damage, prolonging the network's useful life.

Thanks to them, it is possible to install fewer fibers initially and increase capacity as the need arises, without altering the existing infrastructure. A truly intelligent solution for networks of the future.



## EXTRA-MICRO Cable

Air Blown micro cables are designed for access networks or metro feeders. These ultralight, small-diameter cables are ideal for blown installation in microducts, allowing for lower initial investment and future upgrades with the latest fiber technologies.



## PA MICRO Cable

Fibramérica's G652D Series micro-blown cables are small diameter, ultra-lightweight cables designed for blown installation in access networks or metropolitan feeders. These cables are perfect for initial installations with the flexibility needed for future fiber technology upgrades.



## CENTER TUBE Cable

Fibramérica's air-blown micro cables are designed with an ultra-lightweight construction and reduced diameter, ideal for metro feeder or access network installations. These cables are specially designed for blown installation in microducts. They offer a cost-effective initial deployment with the flexibility to adapt and upgrade to the latest fiber technologies at a later date.



## MINI Cable

Designed for FTTX applications, Fibramérica's MINI series is a compact and lightweight cable ideal for blown installation in microtube bundles. The cable features a surface-enhanced outer jacket fiber unit and a protective thermoplastic coating for excellent installation properties.



## PE MICRO Cable

Fibramérica's PE micro-cable series are small diameter, ultra-lightweight cables specifically designed for blown installation in access networks or metropolitan feeders.



## EPFU Cable

The Fibramérica EPFU Series is a cutting-edge, air-blown fiber unit, characterized by its small size and lightweight design. Engineered for optimal protection and installation efficiency, the EPFU series is ideal for modern fiber optic networks.





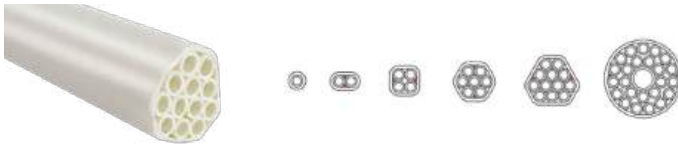
### HDPE MICRODUCT

- Outer diameter of 5.0 mm~16.0 mm
- Permanent layer of solid silicone lubricant on the inner wall of the pipe
- Ribbed longitudinal inner wall of the microduct to further reduce the inner friction coefficient of the pipe so that it is beneficial for cable blowout
- Maximum capacity is 288f microcables



### HDPE TUBE Bundle (Direct Buired, DB)

- Sufficiently thick wall thickness of the outer sheath to provide mechanical protection for the inner microducts and microcables
- Assembled microducts are separated from each other, so that they can be relatively displaced for selection and connection of microducts
- Applied for buried laying of long distance trunk line, metropolitan area network route



### LSZH TUBE Bundle

- Oxygen index 37%.
- Fire resistance according to IEC 60332-1 standard
- Vertical combustion test
- Low smoke emission, halogen-free during combustion



### DOUBLE WALLED Corrugated Pipe (DWC)

- Special corrugated structure to save raw material and good ring stiffness
- Good compressive strength and flexibility to resist ground subsidence and shearing effectively
- Light weight to facilitate transportation and reduce construction intensity
- Low coefficient of friction inside the tube



### HDPE TUBE Bundle (Direct installation, DI)

- Espesor de pared bastante fino del revestimiento exterior
- Los microconductos ensamblados están separados entre sí, por lo que pueden desplazarse relativamente en cuanto a la selección y conexión de microconductos
- Se aplican para colocarse en la tubería de cemento, tubería de acero, tubería de PVC para la expansión de tuberías existentes



### HDPE TUBE Bundle with Strengthened Microduct(DB,DI)

- Thick wall thickness design of microconduit, which can reach 1.5mm~2.0mm
- Fairly thin wall thickness of outer liner to make it convenient for opening outer liner to benefit construction operations, such as branching, maintenance of inner microducts.



### HDPE SILICONE Duct

- With HDPE as the main material, it has good mechanical performance to provide adequate protection for the cable.
- Solid layer of permanent silicone lubricant of inner wall effectively reduces the friction coefficient of inner wall to benefit long distance cable blowing
- The silicone layer is coextruded on the inner wall of the pipe; the cable in the pipe can be repeatedly pulled out without peeling off or breaking.



### PRE-LAID CABLE Duct

- Meanwhile, the conduit is extruded into shape, the cable is synchronously and securely put into the conduit by special equipment and then the conduit with the cable inside can be delivered together to customers.





DIRECT INSTALLATION CONNECTOR



REDUCER CONNECTOR MICRODUCT



END STOP MICRODUCT CONNECTOR



STRAIGHT MICRODUCT CONNECTOR



### 7-WAY PIPE Distribution Closure

**Main Characteristics**

- Length: 316mm (12.4")
- Width: 220mm (8.7")
- Height: 70mm (2.8")
- Weight: 1232g(43.5oz)
- Color: Casings will be black, all other plastic parts will be black
- IP Rating: IP68
- Application: DB or DI
- Crush: 2000N/15mins Impact: >15 joule
- For conduit size: Less than OD ≤ 38mm

**Material**

- Housing: ABS
- Spacers: Nylon
- Gasket: TPE
- Port supports: Polypropylene
- Clamping plates: Nylon
- All metal parts: Stainless steel. Except nickel-plated brass.





Hardware

# Critical Components for Robust Structures

From physical storage to signal management, our hardware is designed for endurance, organization and efficiency. Guaranteeing continuous performance in any environment.

Details define excellence. At Fibramerica, we understand that each component, no matter how small it may seem, plays a fundamental role in the overall performance of a network. That's why our hardware catalog includes specialized options for every type of installation.

From connectors and adapters to cleaning kits and cable management accessories, all of our products are manufactured with high quality materials and designed for maximum durability and performance. The perfect combination of functionality and ergonomics.



FTTH CABLE Clamp



MALIC ANCHOR Clamp  
Diameter 3-8mm



MALIC ANCHOR Clamp



ANCHORING Clamp for  
5,9-6,6mm



ANCHOR Clamp for 2,9-  
3,6mm



FAB-C360



FAB-C360-4



FAB-C360-5



FAB-PA25



FAB-PA1500



FAB-PA2000



FAB-S-TYPE



FAB-S-TYPE1



FAB-S-TYPE2



FAB-S-TYPE3



CRUISER Plate



6-9 and 9-14 mm double-hole  
J-TYPE SUSPENSION Clamp



SUSPENSION Clamp TYPE J  
8-12mm Access



SUSPENSION Clamp J TYPE  
7-9.9mm Access



USPENSION Clamp J TYPE  
16-18.9mm Access



USPENSION Clamp J TYPE  
16-18.9mm



USPENSION Clamp J TYPE  
13-15.9mm Access



SUSPENSION Clamp TYPE J  
10-15 mm Access



SUSPENSION Clamp TYPE J  
10-12.9mm Access



POLE Clamp with handle for  
cables of 9,0 to 13,3 mm in  
diameter



POLE Clamp with handle for  
cables of 13,4 to 17,7 mm in  
diameter



TYPE D Clamp 3/16 large  
for duplicate tapes



TYPE D Clamp 3/16 small for  
single tape



TYPE D Clamp 3/16 small  
Access



TENSIONING HOOK  
for DROP cable



PARALLEL CONNECTOR



L-Arm clamp  
J-Hanger 6-9 and 9-14mm,  
60cm



L-arm with J-bracket  
suspension bracket  
6-9 and 9-14mm, 40cm



L-arm with J-bracket  
suspension bracket  
6-9 and 9-14mm, 100cm



L-arm with small D-type  
suspension clamp, 60cm



L-arm with small D-type  
suspension bracket, 40cm



L-Arm with small D-type  
suspension clamp, 100cm



L-arm with D-type suspen-  
sion clamp, 100cm



L-arm with single tangent  
suspension clamp, 60cm



L-arm with single tangent  
suspension clamp, 40cm



L-arm with single tangent  
suspension clamp, 100cm



SMALL-D Clamp



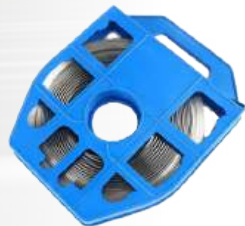
SUSPENSION POLE  
BRACKET



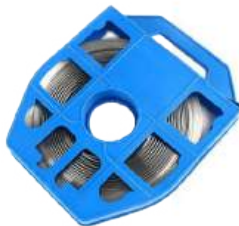
STEEL STRAP FASTENER  
19.05mm 3/4" stainless steel  
304, box of 100 pcs.



15.8mm 5/8" stainless steel  
304 STEEL BAND CLASP, box  
of 100.



304 5/8" STAINLESS STEEL  
CHAIN in 30.5m coils



304 3/8" STAINLESS STEEL  
CHAIN in 30.5m coils



Guide ring  
FAB-KW1609



ADSS CONNECTING Clamp  
bracket -  
FAB-KW1612/FAB-KW1609



ADSS CONNECTING Clamp  
bracket -  
FAB-KW1607/FAB-KW1609



ADSS CONNECTING Clamp  
bracket -  
FAB-KW1614/FAB-KW1609



ENDLESS STRAPPING  
Machine with Cutter



CABLE SHOE



WIRE PRESS



ADSS CORPORAL RACKET  
of 12 pol.



FAB-FSU-D400S



FAB-FSU-D400S



NYLON CLAMPS 2.5 x 100mm (Black)  
 NYLON CLAMPS 5.0 x 150mm (Black)  
 NYLON CLAMPS 7.6 x 550mm (Black)



THIN VELCRO, 25m long,  
 15mm wide, black



SPIRAL DUCT 1/4

- 100G QSFP28 Transceivers
- 100G CFP Transceivers
- CFP2 100G Transceivers
- CFP4 100G transceivers
- 100G CXP transceivers
- 40G QSFP+ transceivers
- 40G CFP transceivers
- 25G SFP28 transceivers
- 16G SFP+ transceivers
- 10G SFP+ transceivers
- 10G BIDI SFP+ 10G BIDI SFP+ transceivers
- 10G CWDM SFP+ 10G CWDM SFP+ Transceivers
- 10G DWDM SFP+ Transceivers
- 10G DWDM SFP+ Tunable 10G DWDM SFP+ Transceivers
- SFP+ Copper SFP+ Transceivers
- 10G XFP+ transceivers
- 10G BIDI XFP 10G Transceivers
- 10G CWDM XFP+ transceivers
- 10G DWDM XFP 10G DWDM XFP transceivers
- DWDM XFP tunable DWDM XFP transceivers
- 10G X2 transceivers
- 10G XENPAK transceivers
- Standard SFP transceivers
- BIDI SFP transceivers
- CWDM SFP transceivers
- DWDM SFP transceivers
- Copper SFP Transceivers





Solar and Electric Energy Solutions

# Storage Systems for a More Sustainable World

In addition to fiber optics, Fibramerica is also a leader in sustainable energy solutions. We offer intelligent, efficient storage systems that can be adapted to different needs.

The future is sustainable. That is why Fibramerica also offers advanced solutions in solar and electrical energy storage, designed to meet the growing demands of homes, businesses and industries.

Our systems optimize energy use, reducing costs and minimizing environmental impact. Whether in residential or industrial applications, our technologies offer efficiency, reliability and flexibility, making them a smart investment for those seeking energy autonomy.





### T200

- ➔ This product has an AC voltage output (100 V-240 V/50 Hz-60 Hz). Keep it out of the reach of children when in use and store it in a safe place to avoid the risk of electric shock.
- ➔ This instruction manual is universal; AC output sockets, AC output voltage, AC output frequency and AC charger plug will vary by country and area. Please read this manual carefully before using the appliance and check that the output voltage of the appliance matches the voltage of your electrical appliance. This is important to ensure that you do not damage your electrical appliance.
- ➔ The inverter of this unit provides a modified sine wave output, which is compatible with AC electrical appliances operating on sine waveforms (power <200W). The operating efficiency of the capacitive load adapter, fluorescent lamp, etc.) and inductive load (motor, fan, etc.) will be different from that of a pure sine wave power supply. There may be some operating noise, which is normal.
- ➔ This unit is designed for temporary outdoor and emergency use only. It cannot replace a normal AC power supply.



### 2001A

- ➔ This product is a 1997Wh large capacity 2000W high power, 2 hours high speed charging portable energy storage power supply, using high safety performance LiFePo4 battery. It can be used as a backup power supply in case of emergency power outage, disaster, camping and vehicles, and also can provide power for various power tools.
- ➔ 2000W high power, pure sine wave AC output, it can be used for home appliances such as dryers, microwave ovens, refrigerators, high power induction stoves and can also be used for other electronic devices such as personal computers. Thanks to the 1100 W ultra-fast charging, this model can be fully charged in 2 hours.
- ➔ The AC input/output voltage frequency can be switched automatically or manually between 50 Hz/60 Hz. This product also supports a maximum of 500W of solar charging, allowing you to charge even when power outage or in outdoor situations.



### 1202A

- ➔ This product is a 1248Wh large capacity 1200W high power, 2 hours high speed charging portable energy storage power supply, using high safety performance LiFePo4 battery.
- ➔ It can be used as a backup power supply in case of disaster emergency power outage, camping and vehicles, and can also provide power for various power tools.
- ➔ 1200W high power, pure sine wave AC output, can be used for home appliances such as dryers, microwave ovens, refrigerators, high power induction stoves and can also be used for other electronic devices such as personal computers.
- ➔ Through the ultra-fast charging of 700W, this model can be fully charged in 2 hours, the AC input/output voltage frequency can automatically or manually between 50Hz/60Hz. This product also supports a maximum of 500W solar charging, allow you to charge even when the power outage or outdoor situations.



### YW500

- ➔ High temperature protection. When the temperature is greater than or equal to 75 °C, the machine will start automatic protection and prohibit entry and exit. When the temperature is lower than 75 °C, it will return to normal.
- ➔ On/Off key. Please press the power key to turn off the power.
- ➔ When the indication of DC, USB and AC lights up, it means the output port has been turned on, and the corresponding equipment can be powered.
- ➔ When not using the power output port, please press 1, 2, 7, 11 or the power key to turn off the power and save power.
- ➔ At low temperature, the battery capacity of the product may be affected. The product can be charged in a temperature range of 0-40 degrees, and the equipment can be powered in a temperature range of -10 degrees to 40 degrees.
- ➔ For the first time, it is recommended to fully charge the battery to avoid inconvenience caused by insufficient power supply.
- ➔ The AC output port only supports equipment under 600 W, and equipment over 600 W does not supply power.



### 1050

- ➔ This power supply has a built-in inverter to provide a pure sine wave output, which is consistent with the waveform and characteristics of the power grid.
- ➔ It can provide a fairly pure alternating current for electrical appliances. However, the traditional inverter with modified waveform may make the inverter unstable, and even make electrical appliances, such as electrical appliances with built-in motors, like printers and etc, emit some running noise.
- ➔ This product is for emergency use only and cannot be used as a substitute for normal household AC power for long-term use of the appliance. Be sure to use the power supply specifications required by the appliance.



### 301B

- ➔ This product is a portable power station, suitable for family emergency power outages, outdoor travel, emergency relief, field work and other scenarios.
- ➔ It has a built-in lithium battery, which supports adapter, car charger, photovoltaic panel and other charging methods, AC output voltage corresponds to different national specifications and a series of supply USB ports for lighting, fan, electric fan, router, laptop and other equipment.



### 501B

- ➔ This product is a portable power station, suitable for family emergency power outages, outdoor travel, emergency relief, field work and other scenarios.
- ➔ It has a built-in lithium battery, which supports adapter, car charger, photovoltaic panel and other charging methods, AC output voltage corresponds to different national specifications and a series of supply USB ports for lighting, fan, electric fan, router, laptop and other equipment.



## Electrical Energy Storage Benefits

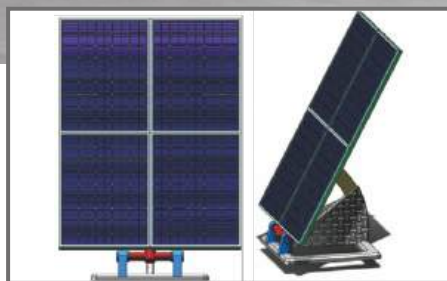
**1** Energy efficiency

**2** Reducing costs and emissions

**3** Long service life and low maintenance



BUR19124U - Frame



TSP48V1K - Tracking Solar Station

### SBS6P48100S1K - Solar Compensated Lithium Back-Up Power System

SBS6P48100S1K is a solar compensated lithium backup power supply system developed by our company with common rail active equalization battery management technology, quadrant solar tracking technology and integrated modular structure design. The product can be flexibly configured in various specifications according to functional requirements, and used for backup and compensation of 48V DC power supply. Several key circuits, structures and software algorithms have been created by our company and are protected by relevant patents and intellectual property rights.

The system is composed of the FAB-IBU48100 lithium battery unit, the FAB-BUR19124U rack and the FAB-TSP48V1K tracking solar power station.



### CLOUD POWER Home Energy Storage Module

The Fibramerica home energy storage module is suitable for home energy storage battery systems.



### ENERGY CUBE 200kWh

Capacity: 200kWh, 25°C @ 0.5c nominal  
 External dimensions: 2200\*1950\*1100mm(H\*W\*D)  
 Rated voltage of DC side: 716.8V  
 Working voltage of DC side: 627-817V  
 Maximum charge/discharge power: 100kW  
 Maximum AC output current: 150A  
 System protection rating: IP54



### B4850

Fibramerica's B4850 battery module is widely used in the energy storage industry. It adopts a modular design and can be used for residential applications. The reliable LiFePO4 technology ensures maximum safety and a longer life cycle.



### B3

With a modular 19" inch design and an integrated intelligent BMS protection system, Fibramerica B3 allows for flexible expansion and easy installation and maintenance. It adopts LiFePO4 technology for maximum safety and longer life cycle.



### DL3.6

Fibramerica DL3.6 is a low voltage energy storage product that adopts high security LFP technology. With 3.6 kWh each, it can support up to 180 kWh with 50 modules connected in parallel. It also supports remote upgrade and easy monitoring. Meet this efficient product with perfect performance.



### DL5.0

DL5.0 has a large capacity design for residential and commercial storage applications. Up to 50 batteries can be connected in parallel to meet the needs of more users. The optional OTA function enables remote upgrade and easy monitoring. Powerful, high capacity and modular.



### B25100

Fibramerica B25100 is a good alternative to the lead-acid battery and a perfect complement for isolated applications in areas with limited or no access to the grid. It is scalable from 2.56 kWh to 40.96 kWh (up to 16 units in parallel), giving it sufficient capacity to meet different requirements.



### A48100

This 4.8 kWh LFP module can be installed either on the ground or on the wall. It is equipped with OTA function for remote upgrade and monitoring. With up to 30 modules in parallel, it can meet various user needs and enable flexible expansion.



### DL5.0C

Fibramerica's DL5.0C adopts a cost-effective design and is tailored for residential and small commercial applications. This LFP battery module enables remote upgrade and monitoring via APP, and offers multiple installation methods. It is scalable from 5.12 kWh to 256 kWh (max. 50 modules in parallel) and offers various power options to meet different requirements.



### POWERDEPOT H5B

PowerDepot H5B is a low voltage product designed for residential applications.

The reliable LFP technology ensures maximum safety and a longer life cycle. It can be flexibly used for self-consumption and backup applications with a wide range of scalable capacity from 5.12 kWh to 25.6 kWh to meet various energy storage needs.



### POWERBOX PRO

The Powerbox Pro is a deep-cycle, high-capacity LFP battery type with enhanced safety, long life and optimized user experience.

It is specially designed with IP65 for more flexible and easier installation indoors or outdoors with wall and ground mounting options. With up to 10 kWh for single unit and max. 5 units in parallel with superior performance, it can meet household electricity demand.

# Reliable Domestic High Voltage Energy Storage Systems

## TOWER

The upgraded Tower series is tailor-made for large residential applications. Stackable design with self-adaptable modules, five power options up to 21.31 kWh with parallel connection available, advanced LiFePO4 technology, remote upgrade, high level of waterproofing and good cooling function. Whatever you need, FibrAmerica Tower Series is there to meet your needs.



## TOWER PRO

FibrAmerica's IP65-rated Tower Pro series offers multiple power options thanks to an expandable modular design (2-6 modules combined), and the expandable parallel connection of up to 12 clusters allows a maximum capacity of 276.48 kWh. Self-configuring stackable modules facilitate system installation and maintenance. Tower Pro also offers an optimized user experience with ultra-fast charging (1C), LED display on the BDU, and remote upgrade and monitoring.



## DH200F

### Battery Specifications

All-in-one multifunctional integration, supporting PV access, grid-to-grid switching and covering the full range of solar and diesel storage systems.

### Maximum safety

Prevention-oriented fire protection strategy, three-level detection+multiple extinguishing agents+intelligent EMS judgment.

### Flexible and efficient

Can be equipped with intelligent and efficient STS, and the off-grid switching time is less than 20 ms. It supports up to 12 parallel machines and can scale up to 2.5MWh.



## DH200Y

### Battery Specifications

All-in-one multifunctional integration, supporting PV access, grid-to-grid switching and covering the full range of solar and diesel storage systems.

### Safe and Reliable

Load cell pressure sensing+level 3 fire protection+active discharge+explosion-proof design.

### Smart and Efficient

Intelligent liquid cooling temperature control, group level temperature difference of 3°C.

### High Protection

C5 anti-corrosion+Pack IP67+PCS IP65.



## DH300Y

### Flexible Expansion

Expansion interface reserved for a single machine for flexible expansion, 10 parallel machines can be expanded up to 3.1MWh.

### Smart And Efficient

Intelligent liquid cooling temperature control, cluster level temperature difference of 3°C; 2% increase in energy efficiency, saving 6 kWh of electricity per unit per day.

### High Capacity

New high-capacity battery cells with a capacity of 312 kWh in a single cabinet.

## DH5000Y-C20-DC - Liquid Cooled Container

### Maximum Safety

Third-level fire protection+active emission+explosion-proof design; Cell pressure detection+three-level fuse+real-time isolation.

### Efficient and Flexible

- Intelligent liquid-cooled temperature control, cluster-level temperature difference of 1.5°C; cluster-by-cluster management chain design, zero parallel capacitance loss.
- High energy density
- High capacity battery cells, up to 5MWh in a 20' container.

### Minimalist Operation And Maintenance

Modular and non walk-in design for minimalist assembly, operation and maintenance.



## POWERSTONE Outdoor Battery Energy Storage Cabinet

PowerStone is a newly designed battery system with a charging rate of 1C and allows for outdoor use.

The integrated intelligent BMS system is widely compatible with branded PCS and the integrated fans and air conditioning provide better temperature control, thus ensuring the safe operation of the entire battery system.



## POWERRACK HV4 Rack Energy Storage System

**High Pressure Range**  
179~876V

**Lithium Iron Phosphate With High Safety Performance**

Lithium iron phosphate and lithium iron and intelligent battery management system

**Scalability**

Each group has a capacity of up to 76.8 kWh

**Customized Cabinet Body**

Suitable for multi-module installation

**High Voltage**

High system efficiency

**Widely Applicable**

Covering all needs in the business environment

## POWERRACK HV4F Rack Energy Storage System

**High Pressure Range**  
179~876V

**Lithium Iron Phosphate With High Safety Performance**

Lithium iron phosphate and lithium iron and intelligent battery management system

**Scalability**

Each group has a capacity of up to 76.8 kWh.

**Customized Cabinet Body**

Suitable for multi-module installation

**High Voltage**

High system efficiency

**Widely Applicable**

Covering all needs in the business environment





Contact Information

[www.fibramerica.com](http://www.fibramerica.com) | Email: [info@fibramerica.com](mailto:info@fibramerica.com)

(+55) 47 2011-1615



*[Click here or scan the QR code to access the site](#)*

